



Planar PCV Series

Full Flip Chip Micro-LED COB

Indoor Fine Pitch LED Display



High contrast ratio



Wide viewing angle



Ultra thin



Quick installation



Dual PSU and Receiving Card



High refresh



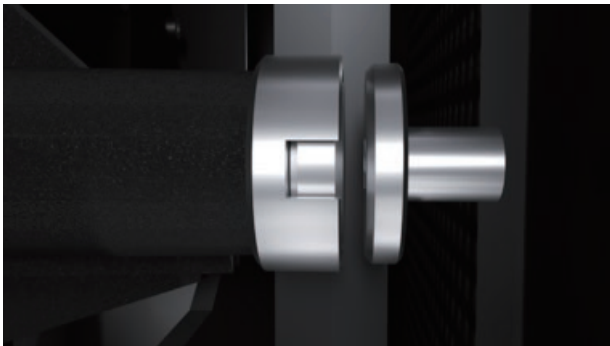
Highlight Features

Right-angle Splicing

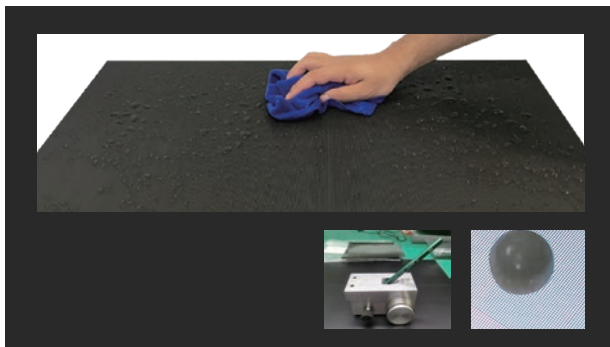
90° angle splicing, the hidden line of the corner is only the thickness of the PCB. Minimum square column side length 600mm



LED Modules with magnetic design for excellent flatness and seamless splicing of the whole screen.

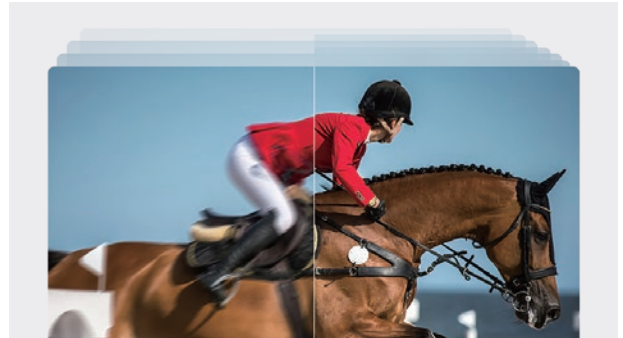


Ultra high protection, anti-static, anti-collision.

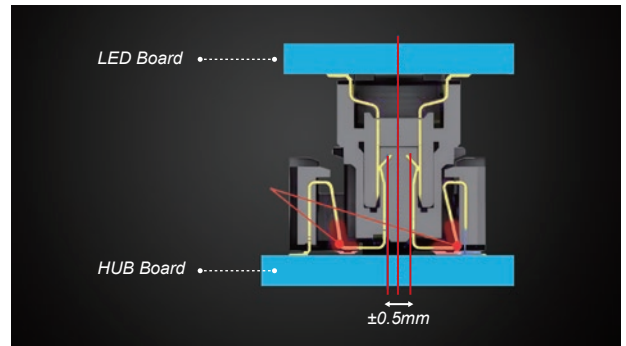


High Refresh Rate

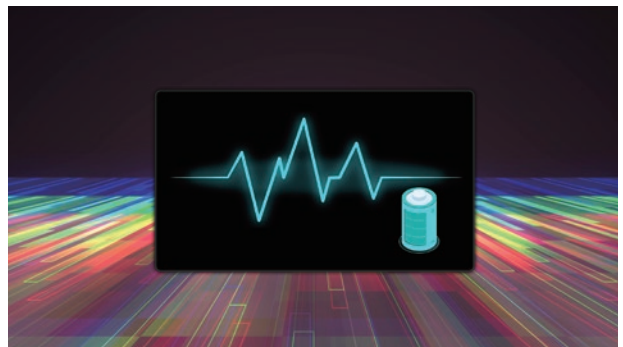
3840/7680 Hz, ultra-high refresh rate, intelligent module playing video smoothly.



Floating Connector - Good SMD position tolerance and shock resistance, reduce the stress on the welding foot when the dislocation is inserted and removed.



One-key energy saving, black screen saves 90% at least.



Specifications

Low-Power Consumption Version

Item	PCV 0.7	PCV 0.9	PCV 1.2	PCV 1.5	PCV 1.8
LED Type	Flip-chip MicroLED COB	Flip-chip MicroLED COB	Flip-chip MicroLED COB	Flip-chip MicroLED COB	Flip-chip MicroLED COB
Pixel Pitch(mm)	0.78	0.9375	1.25	1.56	1.875
Module Resolution(W*H)	192×216	160×180	120×135	96×108	80×90
Module Dimensions(W*H)/(mm)	150×168.75	150×168.75	150×168.75	150×168.75	150×168.75
Modules/Cabinet (WxH)	4×2	4×2	4×2	4×2	4×2
Cabinet Resolution(W*H)	768×432	640×360	480×270	384×216	320×180
Cabinet Dimensions(W*H*D)/(mm)	600×337.5×43.5	600×337.5×43.5	600×337.5×43.5	600×337.5×43.5	600×337.5×43.5
Cabinet Area (m ²)	0.2025	0.2025	0.2025	0.2025	0.2025
Weight per sqm (Kg)	25	25	25	25	25
Pixel Density (Point/㎡)	1638400	1137777	640000	409600	284444
Cabinet Flatness (mm)	≤0.1	≤0.1	≤0.1	≤0.1	≤0.1
Pixel-by-Pixel Brightness Calibration	Yes	Yes	Yes	Yes	Yes
Pixel-by-Pixel Color Calibration	Yes	Yes	Yes	Yes	Yes
Calibrated White Balance Luminance (nits)	800	800	800	800	800
Color Temperature(K)	3000~10000 Adjustable	3000~10000 Adjustable	3000~10000 Adjustable	3000~10000 Adjustable	3000~10000 Adjustable
Viewing Angle(Horizontal/Vertical)(°)	170/170	170/170	170/170	170/170	170/170
Calibrated LED Centroid Deviation	<3%	<3%	<3%	<3%	<3%
Calibrated Luminance Uniformity	≥97%	≥97%	≥97%	≥97%	≥97%
Calibrated Chromaticity Uniformity	Within ±0.003Cx,Cy	Within ±0.003Cx,Cy	Within ±0.003Cx,Cy	Within ±0.003Cx,Cy	Within ±0.003Cx,Cy
Contrast Ratio	20,000:1	20,000:1	20,000:1	20,000:1	20,000:1
Power Consumption(Max)(W/m ²)	425	260	250	250	325
Power Consumption(Avg)(W/m ²)	125	78	75	75	100
AC Operating Voltage(V)	AC100~240V (50/60Hz)				
Driving Type	Common Cathode Constant Current Drive				
Frame Rate (Hz)	50&60	50&60	50&60	50&60	50&60
Refresh Rate(Hz)	3840	3840	3840	3840	3840
Lifetime (hrs)	100,000	100,000	100,000	100,000	100,000
Protection Level	IP54 (Water Cleanable LED Surface) / 4H				
Operating Temperature(°C)	-10 – 40	-10 – 40	-10 – 40	-10 – 40	-10 – 40
Storage Temperature(°C)	-20 – 60	-20 – 60	-20 – 60	-20 – 60	-20 – 60
Operating Humidity(RH)	10%~90%	10%~90%	10%~90%	10%~90%	10%~90%
Storage Humidity(RH)	10%~95%	10%~95%	10%~95%	10%~95%	10%~95%

Remarks:

Power Consumption refers to maximum post-calibration value and shall NOT be used for power distribution design. Electrical parameters allow a ±10% tolerance as per certification.

Standard shipping configuration supports 2400Hz refresh rate (max configurable up to 3840Hz). Note: grayscale performance varies across different scan modes at identical refresh settings.

Customization (refresh rate, etc.) is available per project requirements (consult R&D).

For PCV products, models equipped with A8S or above configuration support enabling the Picture Quality Engine, customized gamma correction, and 18-bit grayscale requirements.

Specifications

Common Anode High-Brightness Version

Item	PCV 1.2 - HB	PCV 1.5 - HB	PCV 1.8 - HB
LED Type	Flip-chip MicroLED COB	Flip-chip MicroLED COB	Flip-chip MicroLED COB
Pixel Pitch(mm)	1.25	1.56	1.875
Module Resolution(W*H)	120×135	96×108	80×90
Module Dimensions(W*H)/(mm)	150×168.75	150×168.75	150×168.75
Modules/Cabinet (WxH)	4×2	4×2	4×2
Cabinet Resolution(W*H)	480×270	384×216	320×180
Cabinet Dimensions(W*H*D)/(mm)	600×337.5×43.5	600×337.5×43.5	600×337.5×43.5
Cabinet Area (m ²)	0.2025	0.2025	0.2025
Weight per sqm (Kg)	25	25	25
Pixel Density (Point/㎡)	640000	409600	284444
Cabinet Flatness (mm)	≤0.1	≤0.1	≤0.1
Pixel-by-Pixel Brightness Calibration	Yes	Yes	Yes
Pixel-by-Pixel Color Calibration	Yes	Yes	Yes
Calibrated White Balance Luminance (nits)	1200	1200	1200
Color Temperature(K)	3000~10000 Adjustable	3000~10000 Adjustable	3000~10000 Adjustable
Viewing Angle(Horizontal/Vertical)(°)	170/170	170/170	170/170
Calibrated LED Centroid Deviation	<3%	<3%	<3%
Calibrated Luminance Uniformity	≥97%	≥97%	≥97%
Calibrated Chromaticity Uniformity	Within ±0.003Cx,Cy	Within ±0.003Cx,Cy	Within ±0.003Cx,Cy
Contrast Ratio	20,000:1	20,000:1	20,000:1
Power Consumption(Max)(W/m ²)	525	525	500
Power Consumption(Avg)(W/m ²)	160	160	150
AC Operating Voltage(V)	AC100~240V (50/60Hz)		
Driving Type	Common Anode Constant Current Drive		
Frame Rate (Hz)	50&60	50&60	50&60
Refresh Rate(Hz)	7680	7680	7680
Lifetime (hrs)	100,000	100,000	100,000
Protection Level	IP54 (Water Cleanable LED Surface) / 4H		
Operating Temperature(°C)	-10 -- 40	-10 -- 40	-10 -- 40
Storage Temperature(°C)	-20 -- 60	-20 -- 60	-20 -- 60
Operating Humidity(RH)	10%~90%	10%~90%	10%~90%
Storage Humidity(RH)	10%~95%	10%~95%	10%~95%

Remarks:

Power Consumption refers to the maximum post-calibration value and shall NOT be used for power distribution design. Electrical parameters allow a ±10% tolerance as per certification.

Standard shipping configuration supports a 7680Hz refresh rate. Note: grayscale performance varies with different scan modes at identical refresh settings. Custom parameters (e.g., refresh rate) are available per project requirements (consult R&D).

For PCV products, models equipped with X900 or higher configuration support enabling the Picture Quality Engine, customized gamma correction, and 18-bit grayscale.