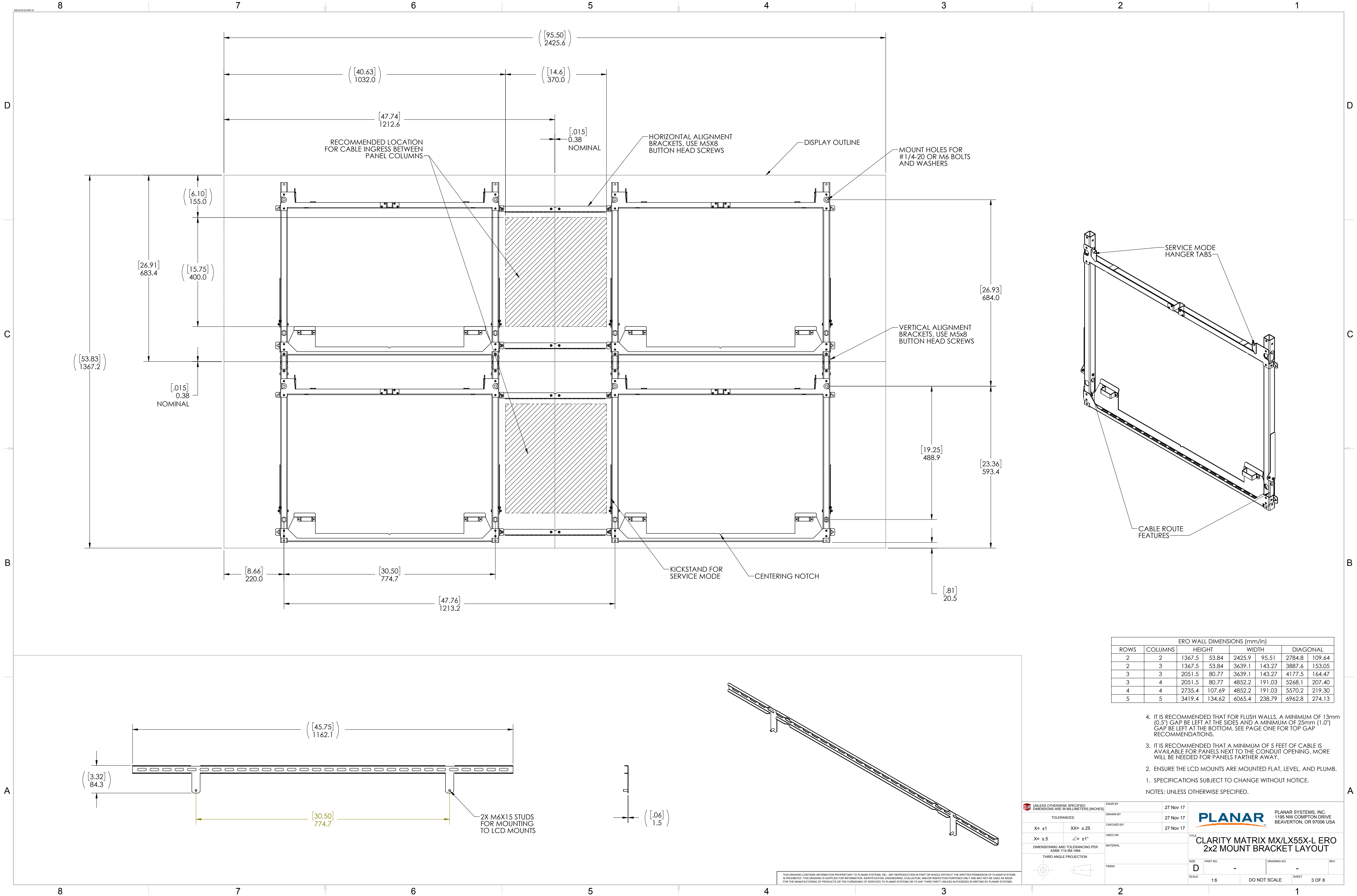


| STANDARD WALL DIMENSIONS (mm/in) |         |        |        |        |        |          |
|----------------------------------|---------|--------|--------|--------|--------|----------|
| ROWS                             | COLUMNS | HEIGHT |        | WIDTH  |        | DIAGONAL |
| 2                                | 2       | 1365.9 | 53.78  | 2424.3 | 95.45  | 2782.6   |
| 2                                | 3       | 1365.9 | 53.78  | 3636.7 | 143.18 | 3884.7   |
| 3                                | 3       | 2049.1 | 80.67  | 3636.7 | 143.18 | 4174.2   |
| 3                                | 4       | 2049.1 | 80.67  | 4849.0 | 190.91 | 5264.2   |
| 4                                | 4       | 2732.2 | 107.57 | 4849.0 | 190.91 | 5565.8   |
| 5                                | 5       | 3415.4 | 134.46 | 6061.4 | 238.64 | 6957.4   |

4. IT IS RECOMMENDED THAT FOR FLUSH WALLS, A MINIMUM OF 13mm (0.5") GAP BE LEFT AT THE SIDES AND A MINIMUM OF 25mm (1.0") GAP BE LEFT AT THE BOTTOM. SEE PAGE ONE FOR TOP GAP RECOMMENDATIONS.
3. IT IS RECOMMENDED THAT A MINIMUM OF 5 FEET OF CABLE IS AVAILABLE FOR PANELS NEXT TO THE CONDUIT OPENING. MORE WILL BE NEEDED FOR PANELS FARTHER AWAY.
2. ENSURE THE LCD MOUNTS ARE MOUNTED FLAT, LEVEL, AND PLUMB.
1. SPECIFICATIONS SUBJECT TO CHANGE WITHOUT NOTICE.
- NOTES: UNLESS OTHERWISE SPECIFIED.

|   |          |  |           |
|---|----------|--|-----------|
| UNLESS OTHERWISE SPECIFIED, DIMENSIONS ARE IN MILLIMETERS (INCHES)  |          | ENGR BY  | 27 Nov 17 |
| TOLERANCES:   |          | DRAWN BY   | 27 Nov 17 |
| X= ±1   | XX= ±.25 | CHECKED BY   | 27 Nov 17 |
| .X= ±.5   | ∠= ±1°   | USED ON  |           |
| DIMENSIONING AND TOLERANCING PER ASME Y14.5M-1994   |          | MATERIAL   |           |
| THIRD ANGLE PROJECTION  |          | FINISH   |           |
| THIS DRAWING CONTAINS INFORMATION PROPRIETARY TO PLANAR SYSTEMS, INC. ANY REPRODUCTION IN PART OR WHOLE WITHOUT THE WRITTEN PERMISSION OF PLANAR SYSTEMS IS PROHIBITED. THIS DRAWING IS SUPPLIED FOR INFORMATION, IDENTIFICATION, ENGINEERING, EVALUATION, AND/OR INSPECTION PURPOSES ONLY AND MAY NOT BE USED AS BASIS FOR THE MANUFACTURING OF PRODUCTS OR THE FURNISHING OF SERVICES TO PLANAR SYSTEMS OR TO ANY THIRD PARTY UNLESS AUTHORIZED IN WRITING BY PLANAR SYSTEMS. |          | TITLE  |           |
|   |          | PLANAR SYSTEMS, INC.<br>1195 NW COMPTON DRIVE<br>BEAVERTON, OR 97006 USA |           |
|   |          | CLARITY MATRIX MX/LX55X-L<br>2x2 MOUNT BRACKET LAYOUT                    |           |
|   |          | SIZE   |           |
|   |          | PART NO.   |           |
|   |          | DRAWING NO.  |           |
|   |          | REV  |           |
|   |          | SCALE  |           |
|   |          | 1:6  |           |
|   |          | DO NOT SCALE   |           |
|   |          | SHEET  |           |
|   |          | 2 OF 8   |           |



| ERO WALL DIMENSIONS (mm/in) |         |        |        |        |          |        |
|-----------------------------|---------|--------|--------|--------|----------|--------|
| ROWS                        | COLUMNS | HEIGHT | WIDTH  |        | DIAGONAL |        |
| 2                           | 2       | 1367.5 | 53.84  | 2425.9 | 95.51    | 2784.8 |
| 2                           | 3       | 1367.5 | 53.84  | 3639.1 | 143.27   | 3887.6 |
| 3                           | 3       | 2051.5 | 80.77  | 3639.1 | 143.27   | 4177.5 |
| 3                           | 4       | 2051.5 | 80.77  | 4852.2 | 191.03   | 5268.1 |
| 4                           | 4       | 2735.4 | 107.69 | 4852.2 | 191.03   | 5570.2 |
| 5                           | 5       | 3419.4 | 134.62 | 6065.4 | 238.79   | 6962.8 |

- IT IS RECOMMENDED THAT FOR FLUSH WALLS, A MINIMUM OF 13mm (0.5") GAP BE LEFT AT THE SIDES AND A MINIMUM OF 25mm (1.0") GAP BE LEFT AT THE BOTTOM. SEE PAGE ONE FOR TOP GAP RECOMMENDATIONS.
  - IT IS RECOMMENDED THAT A MINIMUM OF 5 FEET OF CABLE IS AVAILABLE FOR PANELS NEXT TO THE CONDUIT OPENING. MORE WILL BE NEEDED FOR PANELS FARTHER AWAY.
  - ENSURE THE LCD MOUNTS ARE MOUNTED FLAT, LEVEL, AND PLUMB.
  - SPECIFICATIONS SUBJECT TO CHANGE WITHOUT NOTICE.
- NOTES: UNLESS OTHERWISE SPECIFIED.

UNLESS OTHERWISE SPECIFIED, DIMENSIONS ARE IN MILLIMETERS (INCHES)

TOLERANCES:

X= ±1

XX= ±.25

XX= ±.5

XX= ±1°

DIMENSIONING AND TOLERANCING PER ASME Y14.5M-1994

THIRD ANGLE PROJECTION

ENG'D BY

DRAWN BY

CHECKED BY

USED ON

MATERIAL

FINISH

27 Nov 17

27 Nov 17

27 Nov 17

PLANAR

PLANAR SYSTEMS, INC.  
1195 NW COMPTON DRIVE  
BEAVERTON, OR 97006 USA

TITLE

CLARITY MATRIX MX/LX55X-L ERO  
2x2 MOUNT BRACKET LAYOUT

SIZE

PART NO.

DRAWING NO.

REV

SCALE

1:6

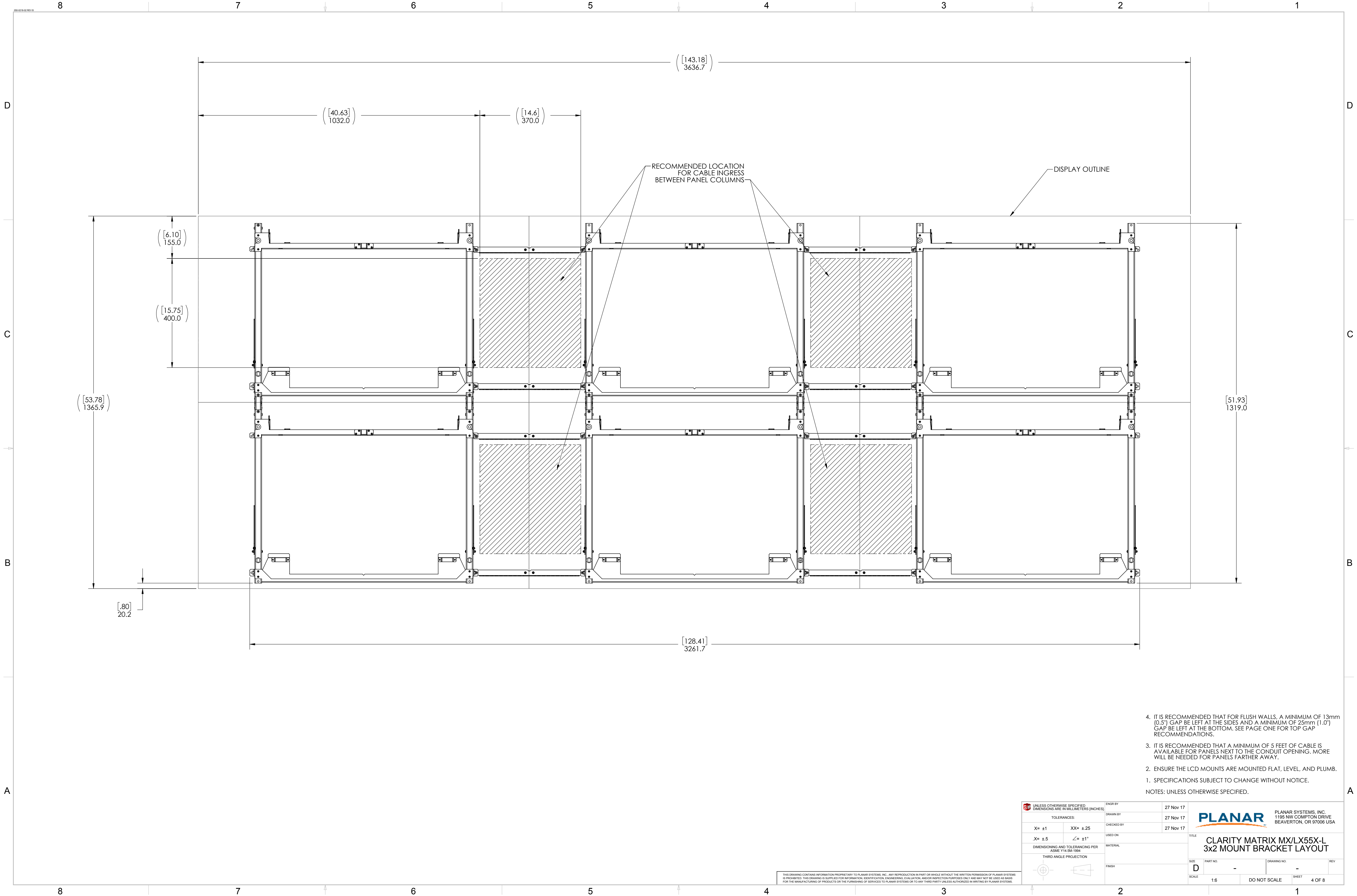
DO NOT SCALE

SHEET

3 OF 8

THIS DRAWING CONTAINS INFORMATION PROPRIETARY TO PLANAR SYSTEMS, INC. ANY REPRODUCTION IN PART OR WHOLE WITHOUT THE WRITTEN PERMISSION OF PLANAR SYSTEMS IS PROHIBITED. THIS DRAWING IS SUPPLIED FOR INFORMATION, IDENTIFICATION, ENGINEERING, EVALUATION, AND/OR INSPECTION PURPOSES ONLY AND MAY NOT BE USED AS BASIS FOR THE MANUFACTURING OF PRODUCTS OR THE FURNISHING OF SERVICES TO PLANAR SYSTEMS OR TO ANY THIRD PARTY UNLESS AUTHORIZED IN WRITING BY PLANAR SYSTEMS.

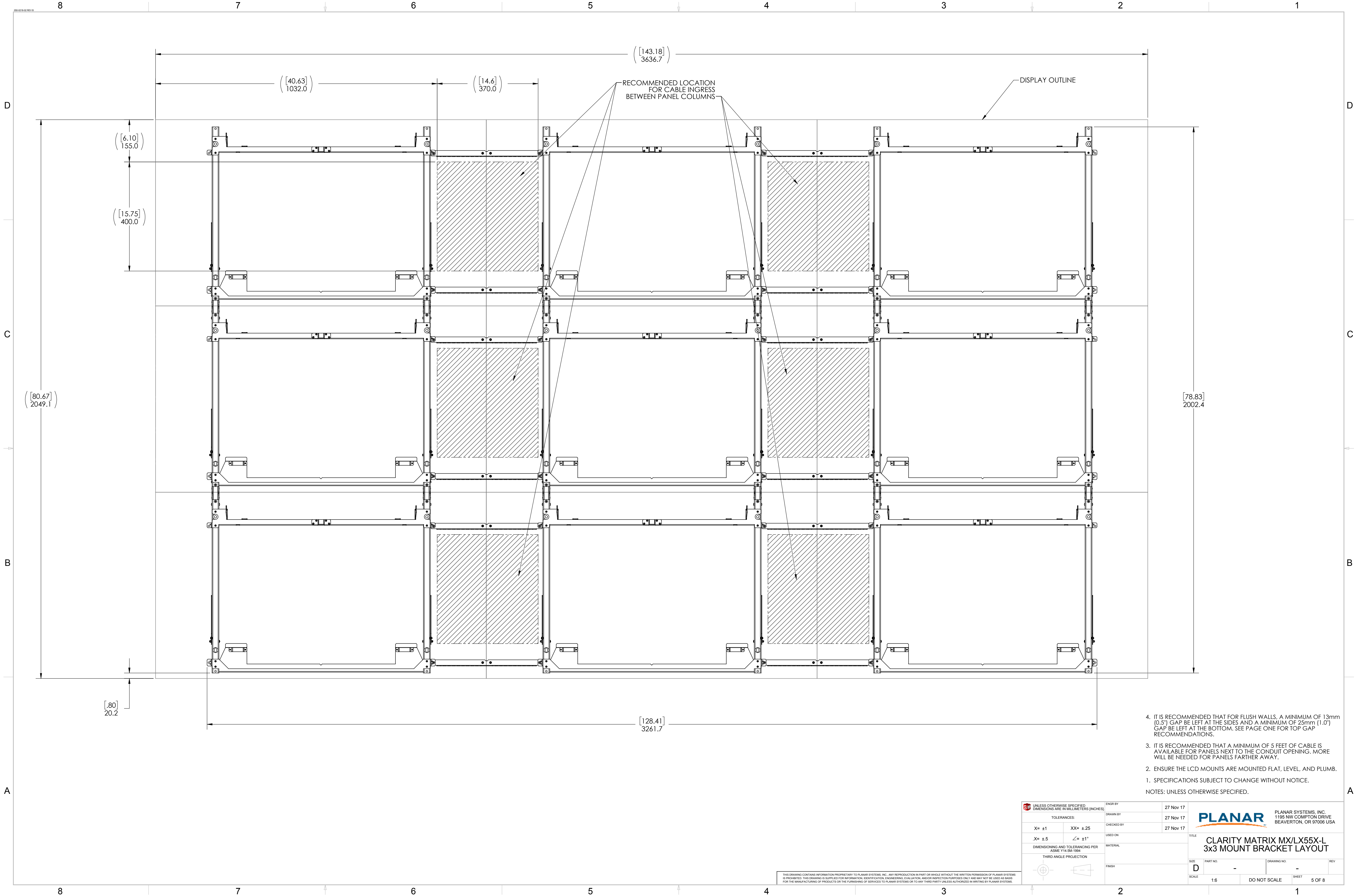




4. IT IS RECOMMENDED THAT FOR FLUSH WALLS, A MINIMUM OF 13mm (0.5") GAP BE LEFT AT THE SIDES AND A MINIMUM OF 25mm (1.0") GAP BE LEFT AT THE BOTTOM. SEE PAGE ONE FOR TOP GAP RECOMMENDATIONS.
3. IT IS RECOMMENDED THAT A MINIMUM OF 5 FEET OF CABLE IS AVAILABLE FOR PANELS NEXT TO THE CONDUIT OPENING. MORE WILL BE NEEDED FOR PANELS FARTHER AWAY.
2. ENSURE THE LCD MOUNTS ARE MOUNTED FLAT, LEVEL, AND PLUMB.
1. SPECIFICATIONS SUBJECT TO CHANGE WITHOUT NOTICE.
- NOTES: UNLESS OTHERWISE SPECIFIED.

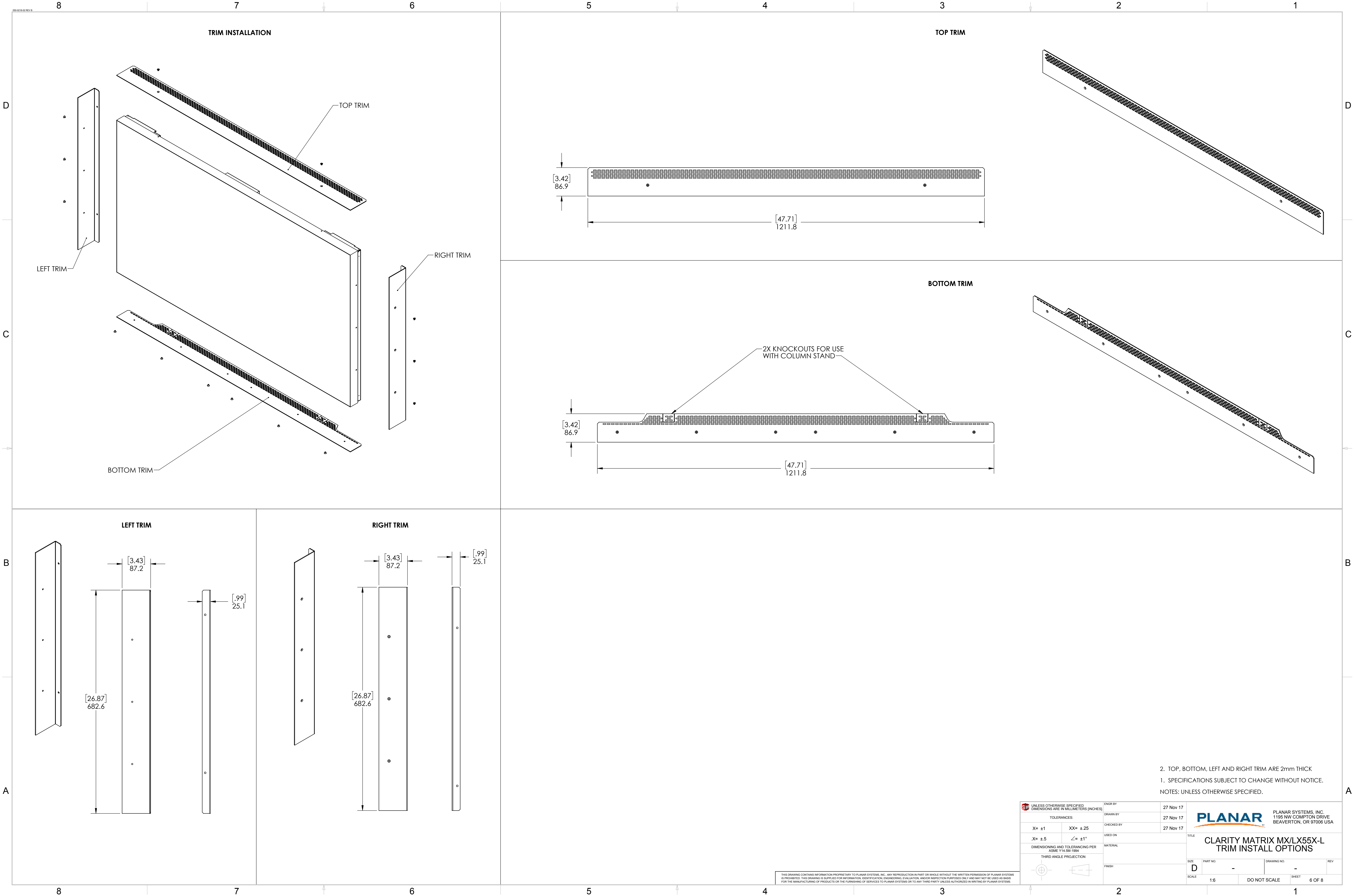
|  |          |            |           |  |              |
|--|----------|------------|-----------|--|--------------|
| UNLESS OTHERWISE SPECIFIED, DIMENSIONS ARE IN MILLIMETERS (INCHES) |          | ENGR BY    | 27 Nov 17 | PLANAR<br>PLANAR SYSTEMS, INC.<br>1195 NW COMPTON DRIVE<br>BEAVERTON, OR 97006 USA |              |
| TOLERANCES:  |          | DRAWN BY   | 27 Nov 17 |  |              |
| X= ±1  | XX= ±.25 | CHECKED BY | 27 Nov 17 | TITLE<br>CLARITY MATRIX MX/LX55X-L<br>3x2 MOUNT BRACKET LAYOUT                     |              |
| .X= ±.5  | ∠= ±1°   | USED ON    |           |  |              |
| DIMENSIONING AND TOLERANCING PER<br>ASME Y14.5M-1994               |          | MATERIAL   |           | SIZE   | PART NO.     |
| THIRD ANGLE PROJECTION   |          | FINISH     |           | D  | -            |
|  |          |            |           | SCALE  | 1:6          |
|  |          |            |           | DO NOT SCALE   | SHEET 4 OF 8 |

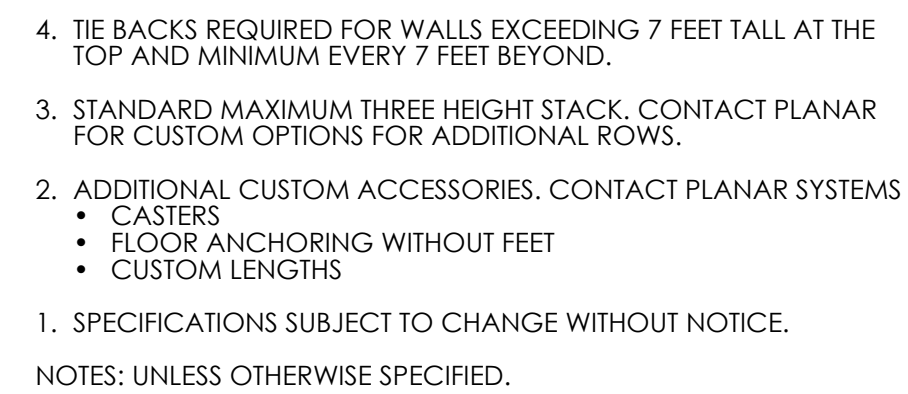
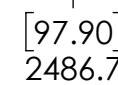
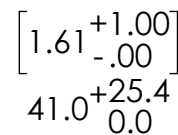
THIS DRAWING CONTAINS INFORMATION PROPRIETARY TO PLANAR SYSTEMS, INC. ANY REPRODUCTION IN PART OR WHOLE WITHOUT THE WRITTEN PERMISSION OF PLANAR SYSTEMS IS PROHIBITED. THIS DRAWING IS SUPPLIED FOR INFORMATION, IDENTIFICATION, ENGINEERING, EVALUATION, AND/OR INSPECTION PURPOSES ONLY AND MAY NOT BE USED AS BASIS FOR THE MANUFACTURING OF PRODUCTS OR THE FURNISHING OF SERVICES TO PLANAR SYSTEMS OR TO ANY THIRD PARTY UNLESS AUTHORIZED IN WRITING BY PLANAR SYSTEMS.







4. IT IS RECOMMENDED THAT FOR FLUSH WALLS, A MINIMUM OF 13mm (0.5") GAP BE LEFT AT THE SIDES AND A MINIMUM OF 25mm (1.0") GAP BE LEFT AT THE BOTTOM. SEE PAGE ONE FOR TOP GAP RECOMMENDATIONS.
3. IT IS RECOMMENDED THAT A MINIMUM OF 5 FEET OF CABLE IS AVAILABLE FOR PANELS NEXT TO THE CONDUIT OPENING. MORE WILL BE NEEDED FOR PANELS FARTHER AWAY.
2. ENSURE THE LCD MOUNTS ARE MOUNTED FLAT, LEVEL, AND PLUMB.
1. SPECIFICATIONS SUBJECT TO CHANGE WITHOUT NOTICE.
- NOTES: UNLESS OTHERWISE SPECIFIED.

|   |          |             |           |   |          |
|---|----------|-------------|-----------|---|----------|
| UNLESS OTHERWISE SPECIFIED<br>DIMENSIONS ARE IN MILLIMETERS (INCHES)  |          | ENGR BY     | 27 Nov 17 | <b>PLANAR</b><br>PLANAR SYSTEMS, INC.<br>1195 NW COMPTON DRIVE<br>BEAVERTON, OR 97006 USA |          |
| TOLERANCES:   |          | DRAWN BY    | 27 Nov 17 |   |          |
| X= ±1   | XX= ±.25 | CHECKED BY  | 27 Nov 17 | TITLE<br><b>CLARITY MATRIX MX/LX55X-L<br/>3x3 MOUNT BRACKET LAYOUT</b>                    |          |
| .X= ±.5   | ∠= ±1°   | USED ON     |           |   |          |
| DIMENSIONING AND TOLERANCING PER<br>ASME Y14.5M-1994  |          | MATERIAL    |           | SIZE  | PART NO. |
| THIRD ANGLE PROJECTION  |          | FINISH      |           | D   | -        |
| THIS DRAWING CONTAINS INFORMATION PROPRIETARY TO PLANAR SYSTEMS, INC. ANY REPRODUCTION IN PART OR WHOLE WITHOUT THE WRITTEN PERMISSION OF PLANAR SYSTEMS IS PROHIBITED. THIS DRAWING IS SUPPLIED FOR INFORMATION, IDENTIFICATION, ENGINEERING, EVALUATION, AND/OR INSPECTION PURPOSES ONLY AND MAY NOT BE USED AS BASIS FOR THE MANUFACTURING OF PRODUCTS OR THE FURNISHING OF SERVICES TO PLANAR SYSTEMS OR TO ANY THIRD PARTY UNLESS AUTHORIZED IN WRITING BY PLANAR SYSTEMS. |          | DRAWING NO. |           | REV   |          |
|   |          | 1:6         |           | DO NOT SCALE  |          |
|   |          | SHEET       |           | 5 OF 8  |          |

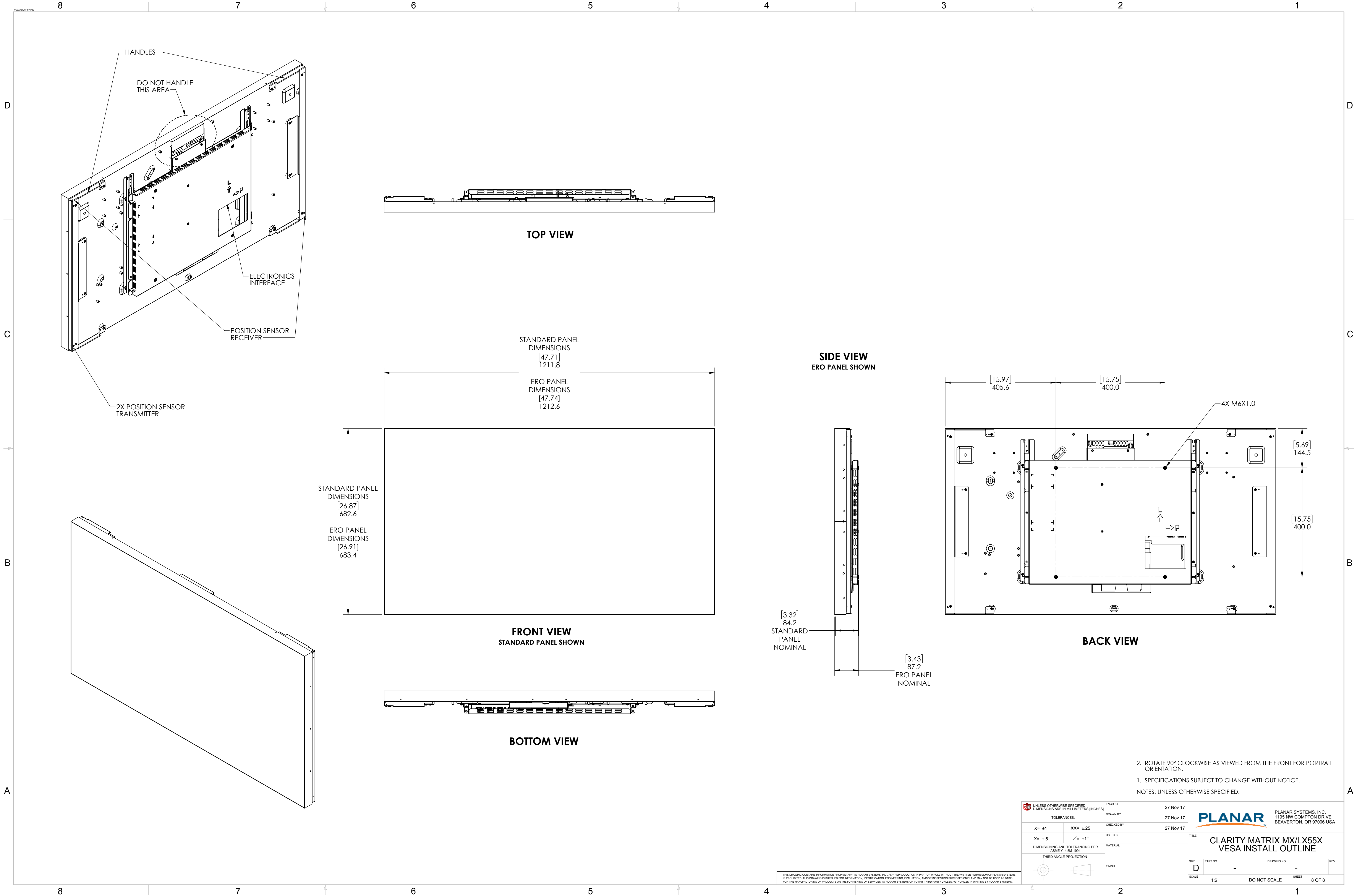




|   |          |            |           |  |  |
|---|----------|------------|-----------|--|--|
|  UNLESS OTHERWISE SPECIFIED:<br>DIMENSIONS ARE IN MILLIMETERS [INCHES]                 | ENGR BY  |            | 27 Nov 17 |  |  PLANAR SYSTEMS, INC.<br>1195 NW COMPTON DRIVE<br>BEAVERTON, OR 97006 USA |
|   | DRAWN BY |            | 27 Nov 17 |  |  |
| TOLERANCES:   |          | CHECKED BY |           | 27 Nov 17                                |  |
| $X = \pm 1$ $XX = \pm 25$<br>$X = \pm 5$ $\angle = \pm 1^\circ$   |          | USED ON    |           | 27 Nov 17                                |  |
| DIMENSIONING AND TOLERANCING PER<br>ASME Y14.5M-1994  |          | MATERIAL   |           | TITLE                                    |  |
| THIRD ANGLE PROJECTION  |          | FINISH     |           | CLARITY MATRIX MX/LX5X-L<br>COLUMN STAND |  |
|   |          | SIZE       |           | PART NO.                                 | DRAWING NO.  |
|   |          | D          |           | -  | -  |
|   |          | SCALE      |           | 1:6                                      | DO NOT SCALE   |
|   |          |            |           | SHEET                                    | 7 OF 8   |

THIS DRAWING CONTAINS INFORMATION PROPRIETARY TO PLANAR SYSTEMS, INC., ANY REPRODUCTION IN PART OR WHOLE WITHOUT THE WRITTEN PERMISSION OF PLANAR SYSTEMS IS PROHIBITED. THIS DRAWING IS SUPPLIED FOR INFORMATION, IDENTIFICATION, ENGINEERING, EVALUATION, AND/OR INSPECTION PURPOSES ONLY AND MAY NOT BE USED AS BASIS FOR THE MANUFACTURING OF PRODUCTS OR THE FURNISHING OF SERVICES TO PLANAR SYSTEMS OR TO ANY THIRD PARTY UNLESS AUTHORIZED IN WRITING BY PLANAR SYSTEMS.





2. ROTATE 90° CLOCKWISE AS VIEWED FROM THE FRONT FOR PORTRAIT ORIENTATION.
1. SPECIFICATIONS SUBJECT TO CHANGE WITHOUT NOTICE.
- NOTES: UNLESS OTHERWISE SPECIFIED.

|  |          |             |           |
|--|----------|-------------|-----------|
| UNLESS OTHERWISE SPECIFIED, DIMENSIONS ARE IN MILLIMETERS (INCHES) |          | ENGR BY     | 27 Nov 17 |
| TOLERANCES:  |          | DRAWN BY    | 27 Nov 17 |
| X= ±1  | XX= ±.25 | CHECKED BY  | 27 Nov 17 |
| .X= ±.5  | ∠= ±1°   | USED ON     |           |
| DIMENSIONING AND TOLERANCING PER ASME Y14.5M-1994                  |          | MATERIAL    |           |
| THIRD ANGLE PROJECTION   |          | FINISH      |           |
| TITLE  |          | SIZE        | PART NO.  |
| CLARITY MATRIX MX/LX55X VESA INSTALL OUTLINE                       |          | D           | -         |
| SCALE  |          | DRAWING NO. | REV       |
| 1:6  |          |             |           |
| DO NOT SCALE   |          | SHEET       | 8 OF 8    |

THIS DRAWING CONTAINS INFORMATION PROPRIETARY TO PLANAR SYSTEMS, INC. ANY REPRODUCTION IN PART OR WHOLE WITHOUT THE WRITTEN PERMISSION OF PLANAR SYSTEMS IS PROHIBITED. THIS DRAWING IS SUPPLIED FOR INFORMATION, IDENTIFICATION, ENGINEERING, EVALUATION, AND/OR INSPECTION PURPOSES ONLY AND MAY NOT BE USED AS BASIS FOR THE MANUFACTURING OF PRODUCTS OR THE FURNISHING OF SERVICES TO PLANAR SYSTEMS OR TO ANY THIRD PARTY UNLESS AUTHORIZED IN WRITING BY PLANAR SYSTEMS.