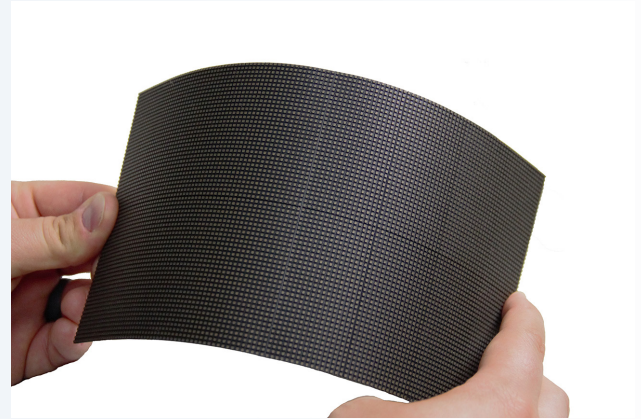




# Planar CarbonLight CLI Flex Series

Curved LED Video Wall

- ▶ *1.3, 1.5, 1.9, 2.6 & 3.9mm pixel pitches*
- ▶ *Bendable for convex or concave curves*
- ▶ *Hang, wall mount or free stand*
- ▶ *Curve radius as small as 25"*



Planar<sup>®</sup> CarbonLight<sup>™</sup> CLI Flex<sup>™</sup> Series pliable LED video wall displays combine to create immersive and eye-catching concave or convex curved video walls. The LED modules are literally bendable, ideal for smoothly curved walls, waves, halos or column wraps. The modules can form curves as tight as 25" or 637mm without color shift, offering a more visually-appealing alternative to faceting flat LED cabinets into segmented curves.

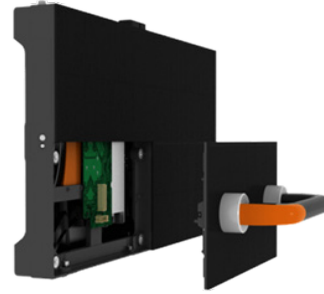
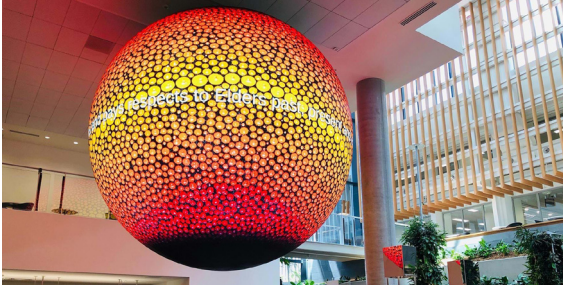
---

## Combine with Flat Walls

Planar CarbonLight CLI Flex Displays can be seamlessly blended with standard, non-pliable, Planar<sup>®</sup> CarbonLight<sup>™</sup> CLI Series cabinets to form unique video walls with both flat and curved sections that can truly envelope viewers.



# Product Highlights



## Venue Versatility

Planar CarbonLight CLI Flex attaches magnetically to a customized sheet metal mounting frame, facilitating wall-mounting, free-standing or hanging installations.

## Easy Access

Individual cabinets can be removed and installed anywhere within the video wall without disrupting the layout, while front service make module extraction simple for maintenance.

# Specifications

Model	1.3 mm	1.5 mm	1.9 mm	2.6 mm	3.9 mm
<b>Resolution</b>	192 x 96	160 x 80	128 x 64	96 x 48	64 x 32
<b>Pixel Density</b>	589,824/m <sup>2</sup>   63,488/ft <sup>2</sup>	409,600/m <sup>2</sup>   38,053/ft <sup>2</sup>	262,144/m <sup>2</sup>   24,353/ft <sup>2</sup>	147,456/m <sup>2</sup>   13,699/ft <sup>2</sup>	65,536/m <sup>2</sup>   6,088/ft <sup>2</sup>
<b>LED Module Size (WxH)</b>	250 x 125mm   9.84 x 4.92in				
<b>Brightness (nits)</b>	600	600	800	800	1,000
<b>Power Consumption Max, Typical (watts)</b>		900/m <sup>2</sup>   83.6/ft <sup>2</sup> , 300/m <sup>2</sup>   27.8/ft <sup>2</sup>			600/m <sup>2</sup>   55.75/ft <sup>2</sup> , 200/m <sup>2</sup>   18.58/ft <sup>2</sup>
<b>Curve Diameter Min</b>	1,274mm				
<b>LED Module Diagonal</b>	279.5mm   11in				
<b>LED Module Area</b>	.03125 m <sup>2</sup>   .33637 ft <sup>2</sup>				
<b>Line Voltage</b>	100~240V AC, 50/60 Hz				
<b>LED Module Weight</b>	0.12kg   0.26lbs				
<b>System Weight Typical</b>	27.15kg/m <sup>2</sup>   5.6lbs/ft <sup>2</sup>				
<b>Contrast Ratio</b>	4,000:1				
<b>LED Refresh Rate</b>	3,840Hz				
<b>Color Temperature, Adjustable (k)</b>	3,000~9,000				
<b>Grey Scale</b>	14 bit				
<b>Viewing Angle Horizontal, Vertical</b>	140°, 140°				
<b>Video Input Type</b>	DVI, HDMI, HD-SDI				
<b>Video Input Resolution Max</b>	1920 x 1080 @ 60 Hz per S6F, 3840x2160 @ 60 Hz per Z6				
<b>Frame Rate</b>	50~60Hz				
<b>Control Type Input</b>	CAT6 Ethernet				
<b>Service Access</b>	Front				
<b>Lifetime, Typical</b>	100,000 hrs				
<b>Environment</b>	Indoor				
<b>Power Supply</b>	Dual				Single
<b>Operating Temp.</b>	-20° to 40° C   -4° to 104° F				
<b>Storage Temp.</b>	-35° to 60° C   -31° to 140° F				
<b>Regulatory Compliance</b>	FCC Class A, CE, UL recognized component				
<b>Mounting Structure</b>	Custom sheet metal box frame				
<b>Display Controller</b>	Colorlight S6F or Z6				
<b>Power &amp; Data Distribution Box</b>	8 LED modules per box				

All Planar CarbonLight CLI Flex projects are managed by Planar Custom Solutions. Design fees may apply.

For more information, click to visit: [www.planar.com/carbonlight-cli-flex](http://www.planar.com/carbonlight-cli-flex)

Planar is a trademark of Planar Systems, Inc. All other trademarks and service marks are property of their holders. Copyright © 2022 Planar Systems, Inc. All rights reserved. This document may not be copied in any form without permission from Planar. Information in this document is subject to change without notice. 4/2022