



# Planar CarbonLight CLI Series

LED Video Wall Displays

- ▶ *1.5, 1.9, 2.6, 3.9 & 5.2mm pixel pitches*
- ▶ *Carbon fiber construction*
- ▶ *Front serviceable*
- ▶ *Hang, wall mount or free stand*



Planar<sup>®</sup> CarbonLight<sup>™</sup> CLI Series indoor LED video wall displays are lightweight and high strength, patented carbon fiber frames in 500 x 500 modular designs. They are versatile and can be hung, wall mounted or used in free-standing installations. Beveled edges enable 90-degree corners, making them ideal for a variety of fixed or temporary event applications.

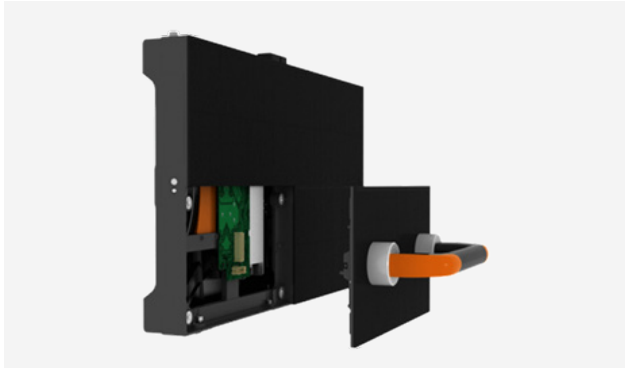
---

## Carbon Fiber Strength

Planar CarbonLight LED display solutions share a patented carbon fiber construction that makes them uniquely lightweight, thin and strong. Their refined mechanical construction and innovative features enable fast and versatile installations that support creativity and catch the eye.



# Product Highlights



## Easy Access

Planar CarbonLight CLI Series displays feature front-side installation, enabling easy wall mounting without much space needed behind the video wall. Front service shrinks the overall footprint making more spaces viable for LED video walls.

## Combine with Curves

Displays can be seamlessly combined with bendable Planar® CarbonLight™ CLI Flex™ Series cabinets to form unique video walls with both flat and curved sections.

# Specifications

Model	CLI1.5	CLI1.9	CLI2.6	CLI3.9	CLI5.2
<b>Pixel Pitch (mm)</b>	1.5	1.9	2.6	3.9	5.2
<b>Resolution</b>	320 x 320	256 x 256	192 x 192	128 x 128	96 x 96
<b>Cabinet Size (WxHxD)</b>	500 x 500 x 63mm   19.69 x 19.69 x 2.48		500 x 500 x 53mm   19.69 x 19.69 x 2.09		
<b>Cabinet Weight</b>	3.9kg   8.6lbs	4.1kg   9.04lbs		3.9kg*   8.6lbs*	
<b>Weight Bearing Capacity (per cabinet)</b>	1,000kg**   2,204lb**				
<b>Power Consumption, Max (watts)</b>	150/Cabinet   600/m <sup>2</sup>   56/ft <sup>2</sup>	300/Cabinet   1,200/m <sup>2</sup>   111/ft <sup>2</sup>		150/Cabinet   600/m <sup>2</sup>   56/ft <sup>2</sup>	
<b>Power Consumption, Typical (watts)</b>	75/Cabinet   300/m <sup>2</sup>   28/ft <sup>2</sup>	150/Cabinet   600/m <sup>2</sup>   56/sft <sup>2</sup>		75/Cabinet   300/m <sup>2</sup>   28/sft <sup>2</sup>	
<b>Line Voltage</b>	100-240V AC, 50/60Hz				
<b>Brightness Max</b>	600 cd/m <sup>2</sup>	800 cd/m <sup>2</sup>	1000 cd/m <sup>2</sup>		
<b>Contrast Ratio</b>	1,000:1	4,000:1			
<b>LED Refresh Rate</b>	3,840Hz				
<b>Color Temperature, Calibrated</b>	6,500k				
<b>Viewing Angle Horizontal, Vertical</b>	140°, 140°				
<b>Frame Rate</b>	30~70Hz				
<b>Grey Scale</b>	14 bit				
<b>Service Access</b>	Front				
<b>Installation</b>	Hanging, Standing, Wall Mounted				
<b>Lifetime, Typical</b>	75,000 hrs				
<b>Environment</b>	Indoor				
<b>Protection Rating</b>	IP40				
<b>Operating Temp.</b>	-20° to 40° C   -4° to 104° F				
<b>Storage Temp.</b>	-20° to 50° C   -4° to 122° F	-35° to 60° C   -31° to 140° F			
<b>Cabinet Material</b>	Carbon Fiber				

\* Display weight includes single PSU  
 \*\* Weight Bearing Capacity for hanging

For more information, click to visit: [www.planar.com/carbonlight-cli](http://www.planar.com/carbonlight-cli)

Planar is a trademark of Planar Systems, Inc. All other trademarks and service marks are property of their holders. Copyright © 2022 Planar Systems, Inc. All rights reserved. This document may not be copied in any form without permission from Planar. Information in this document is subject to change without notice. 3/2022