



Planar WallDirector Video Controller

Scalable Video Wall Control



- ▶ *Compact & powerful rack-mount processor*
- ▶ *Captures sources & provides signal extension*
- ▶ *Software for configuration, control & monitoring*
- ▶ *Scales modularly to support larger video walls*

Planar[®] WallDirector[™] Video Controller (VC) is a family of compact and scalable video processors designed to drive select Planar video walls using the web-based Planar[®] WallDirector[™] Software management application. The 1U rack mount Planar WallDirector VC is available in four models for organization's unique applications. Each device captures multiple 4K inputs and drives the video wall at native resolution while providing signal extension over CAT or fiber connections.

Advanced Processing

Planar[®] Big Picture Plus[™] Video Wall Processing enables users to simultaneously view ultra-high resolution content from several independent sources, scaling content across the entire video wall or any section. It also facilitates Picture-in-Picture.





Scalable by Design

Cascade up to 18 Controllers together to support larger video walls and higher resolutions. Planar WallDirector Software manages Planar WallDirector VC groups as if they are one system rather than multiple separate units.



Easy Management

The user-friendly Planar WallDirector Software features one-button presets for set-up and configuration, recalling windowing layouts, dragging and dropping content sources on the video wall canvas and easy manipulation of window size and position. One can even overlap content sources.



Monitor Health

Planar WallDirector Software captures video wall components' health status in real time, in a centralized, convenient location, for easy maintenance. Configurable alerts also help keep you informed. The software, in most cases, can detect the hardware components that are part of the video wall, making setup quick.



Permissions

Set user permission levels in the software to ensure only the people you choose have access to setup and others more-critical administration settings. Similarly, set non-admin permissions that allow others to monitor the health of individual components.



Source Synchronization

Planar® WallSync™ uses Smart Genlock to automatically ensure perfectly synchronized video playback without manual configuration.



Made for America

Organizations that prefer to use products that have been manufactured in the United States or countries designated in the U.S. Trade Agreements Act (TAA) need look no further. Planar WallDirector Video Controllers are TAA Compliant.

Compatible Video Walls

Planar WallDirector Video Controller models can be used with best-in-class Planar LED and LCD video walls, removing electronics from the wall to a separate off-board location, reducing noise and heat from the display wall.

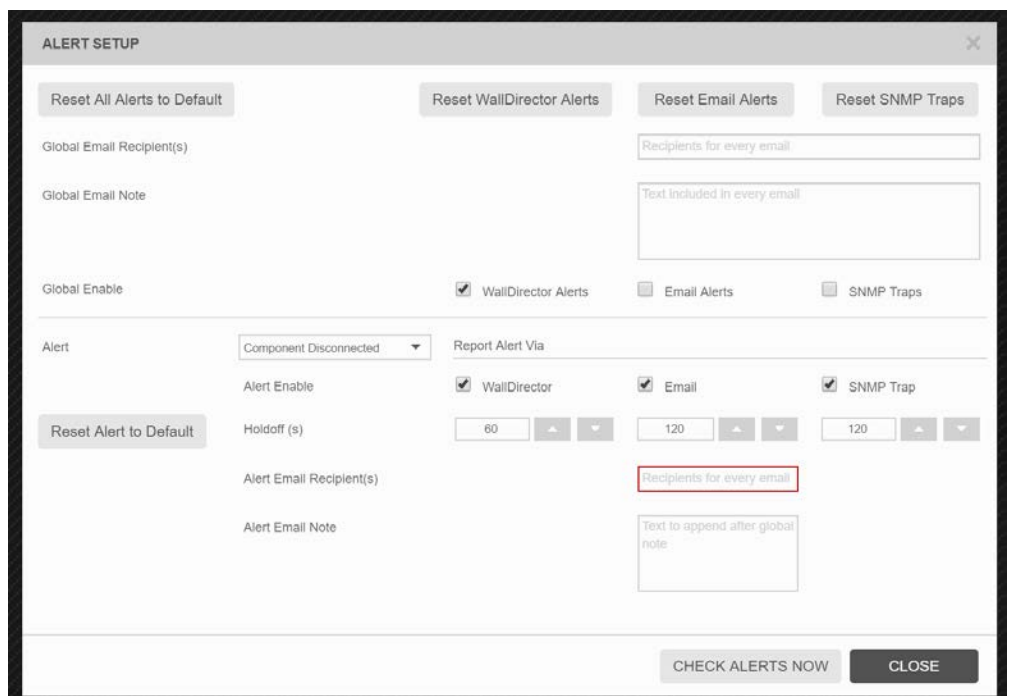
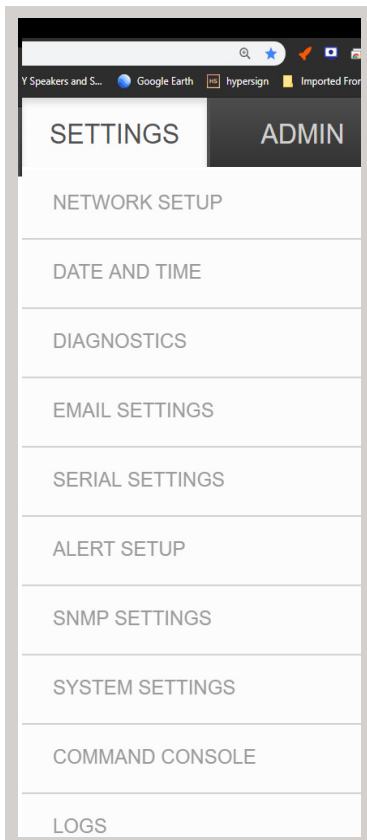
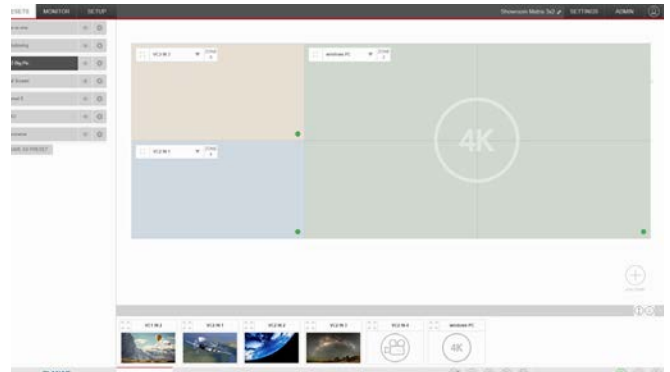
APPLICABLE PRODUCT LINES

- Clarity® Matrix® G3 LCD Video Wall System
- Planar® DirectLight® Ultra Series
- Planar® DirectLight® X Series
- Planar® TVF Series
- Planar® Luxe MicroLED
- Planar® Luxe



Planar WallDirector Software

- Set-up & configure a video wall
- Monitor the health & status of all video wall components from a convenient, centralized location
- Drag & drop video wall canvas, for window positioning & sizing
- Send customized email alerts to select people when specific fault conditions arise
- Store & recall windowing layouts via simple, one-button presets
- Permission levels to limit administrator access
- Proactively troubleshoot power supplies and video controllers



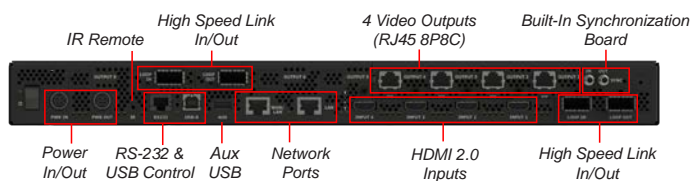
Specifications

Model	VC4-HSL	VC4H-BP+	VC9H-BP+
Supported Products	Planar DirectLight Ultra Series, Clarity Matrix G3 LCD Video Wall System, Planar DirectLight X Series		
Physical Size	1U Rack-mounted Controller, 19" Rack, 265mm depth		
Maximum Output Resolution	Up to 4 Full HD (1920x1080) Display Sections, 8.3M Pixels		Up to 9 Full HD (1920x1080) Display Sections, 18.6M Pixels
Video Inputs	4x HDMI 2.0 (w/HDCP 2.2)	4x HDMI 2.0 (w/HDCP 2.2); 1x DisplayPort 1.2	
Video Outputs	4x RJ45 8P8C	4x RJ45 8P8C, 1x DisplayPort 1.2	9x RJ45 8P8C, 1x DisplayPort 1.2
High Speed Link (HSL)	2 Out, 2 In, QSFP+ cable		N/A
HSL Loop Capacity	80Gb. 4x 4K or 16x Full HD video sources		N/A
Optional Fiber Extender	Yes		N/A
Maximum Distance from Video Wall	Standard: 200ft (60m) Fiber Extension: 6500ft (2km)		
Control	IR Remote Control, RS-232, USB, Network, Planar WallDirector Software		
Controller Status	Diagnostic LEDs, Planar WallDirector Software Health Monitoring and Alerts		
Sync	Mini BNC In/Out Black Burst and Tri-level		
Image Scaling	Planar Big Picture Plus Windowing, Planar WallSync, PiP, 4K at 60Hz Upscaling and Downscaling		
Windowing	13 per Video Controller		
Input Power / Draw	24-48V _{DC} / 70W	24-48V _{DC} / 65W	24-48V _{DC} / 75W

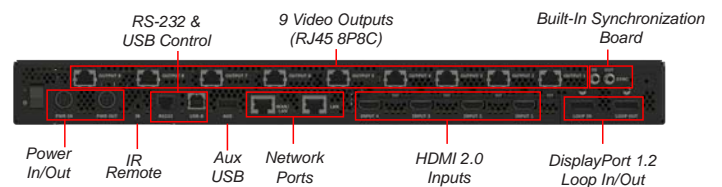
Model	VC4-L
Supported Products	Planar TVF Series
Physical Size	1U Rack-mounted Controller, 19" Rack, 265mm depth
Maximum Output Resolution	Up to 8 Full HD (1920x1080) Display Sections, 16.6M Pixels
Video Inputs	4x HDMI 2.0 (w/HDCP 2.2); 1x DisplayPort 1.2
Video Outputs	4x Fiber SFP+, 1x DisplayPort 1.2
Fiber to CAT Converter	T10-F-C1G/T10-SL-C1G. 4 per VC4-L-F maximum
Distance to T10 (max)	Fiber: 6,500ft (2km)
Control	IR Remote Control, RS-232, USB, Network, Planar WallDirector Software
Controller Status	Diagnostic LEDs, Planar WallDirector Software Health Monitoring and Alerts
Sync	Mini HD-BNC In/Out Black Burst and Tri-level
Image Scaling	Planar Big Picture Plus Windowing, Planar WallSync, PiP, 4K at 60Hz Upscaling and Downscaling
Windowing	13 per Video Controller
Input Power / Draw	120-240V _{AC} / 70W

Fiber-to-CAT Converter T10		
Model	T10-F-C1G	T10-SL-C1G
Supported VC Version	VC4-L-F	
Physical Size	1U Rack-mounted. 19" Rack, 308mm depth	11.5" x 4" x 1" Fits behind wall
Output Resolution (max)	Up to 2 Full HD (1920x1080) Display Sections, 4.2M Pixels	
Video Inputs	1x Duplex LC	1x Fiber SFP+
Video Outputs	10x CAT 8P8C	
Maximum Distance to Video Wall	CAT 490ft (150m)	Fiber 6500ft (2km)
Input Power / Draw	100-240V _{AC} / 50W	100-240V _{AC} / 35W

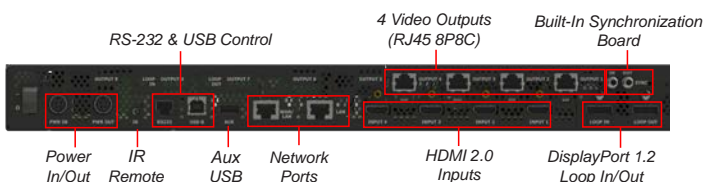
Planar WallDirector VC4-HSL



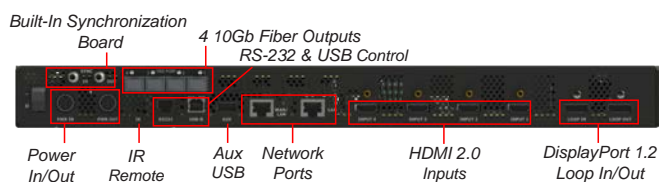
Planar WallDirector VC9



Planar WallDirector VC4



Planar WallDirector VC4-L



For more information visit: www.planar.com/walldirector-vc

Planar is a trademark of Planar Systems, Inc. All other trademarks and service marks are property of their holders. Copyright © 2022 Planar Systems, Inc. All rights reserved. This document may not be copied in any form without permission from Planar. Information in this document is subject to change without notice. 4/2022