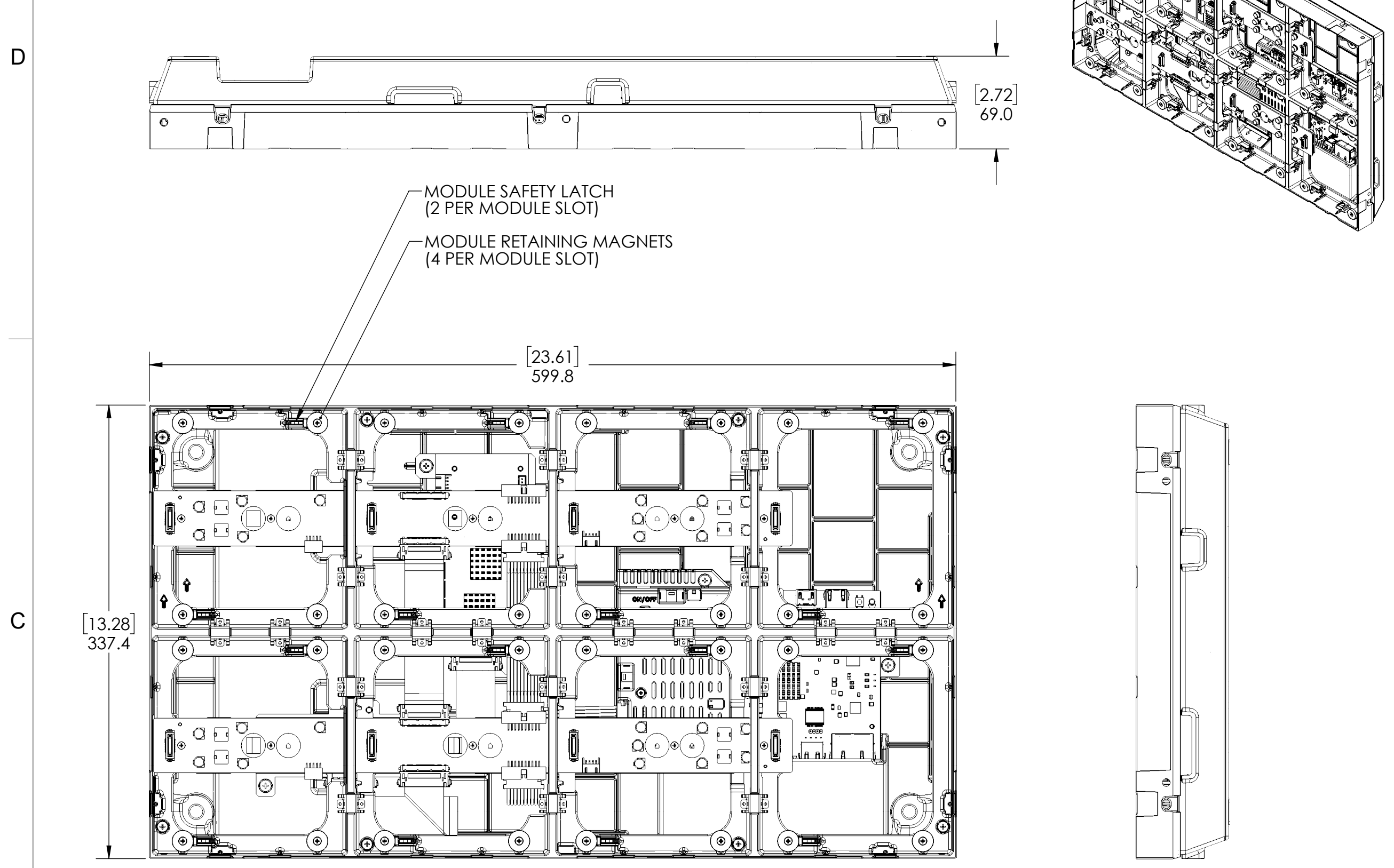
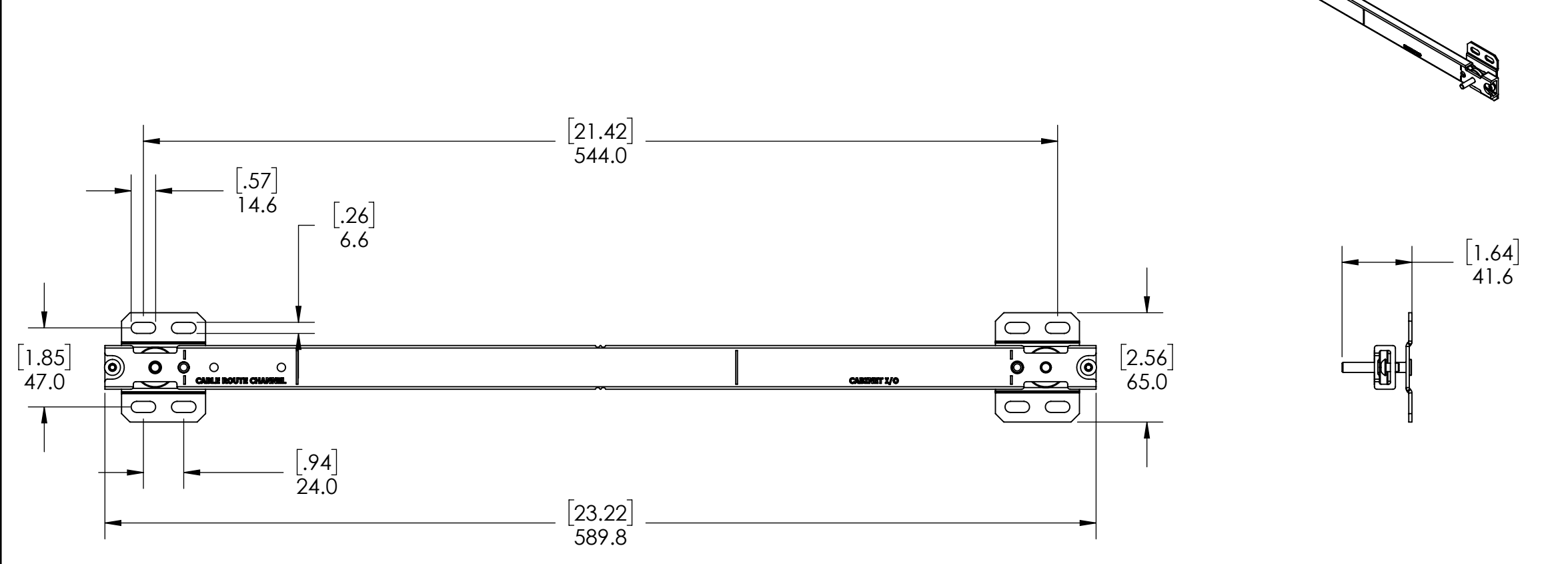


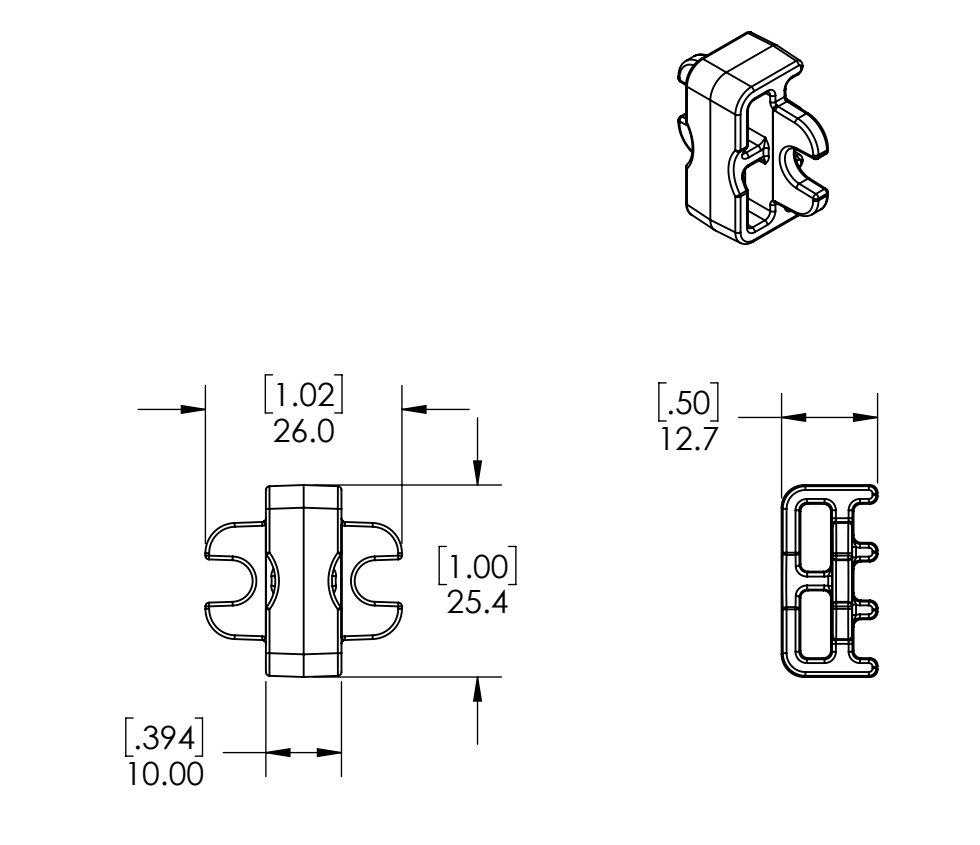
ULTRA LED CHASSIS (INPUT CHASSIS SHOWN)



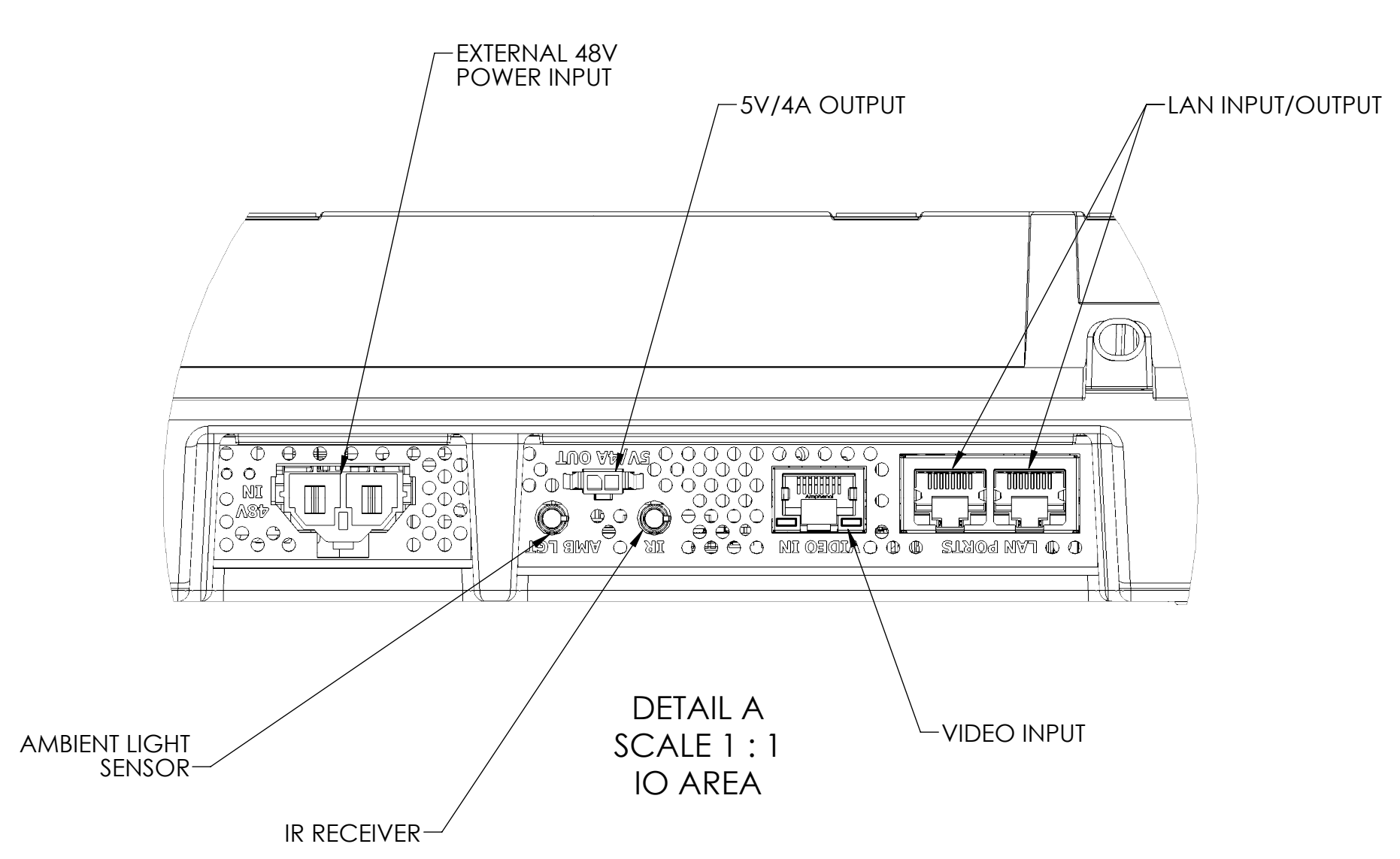
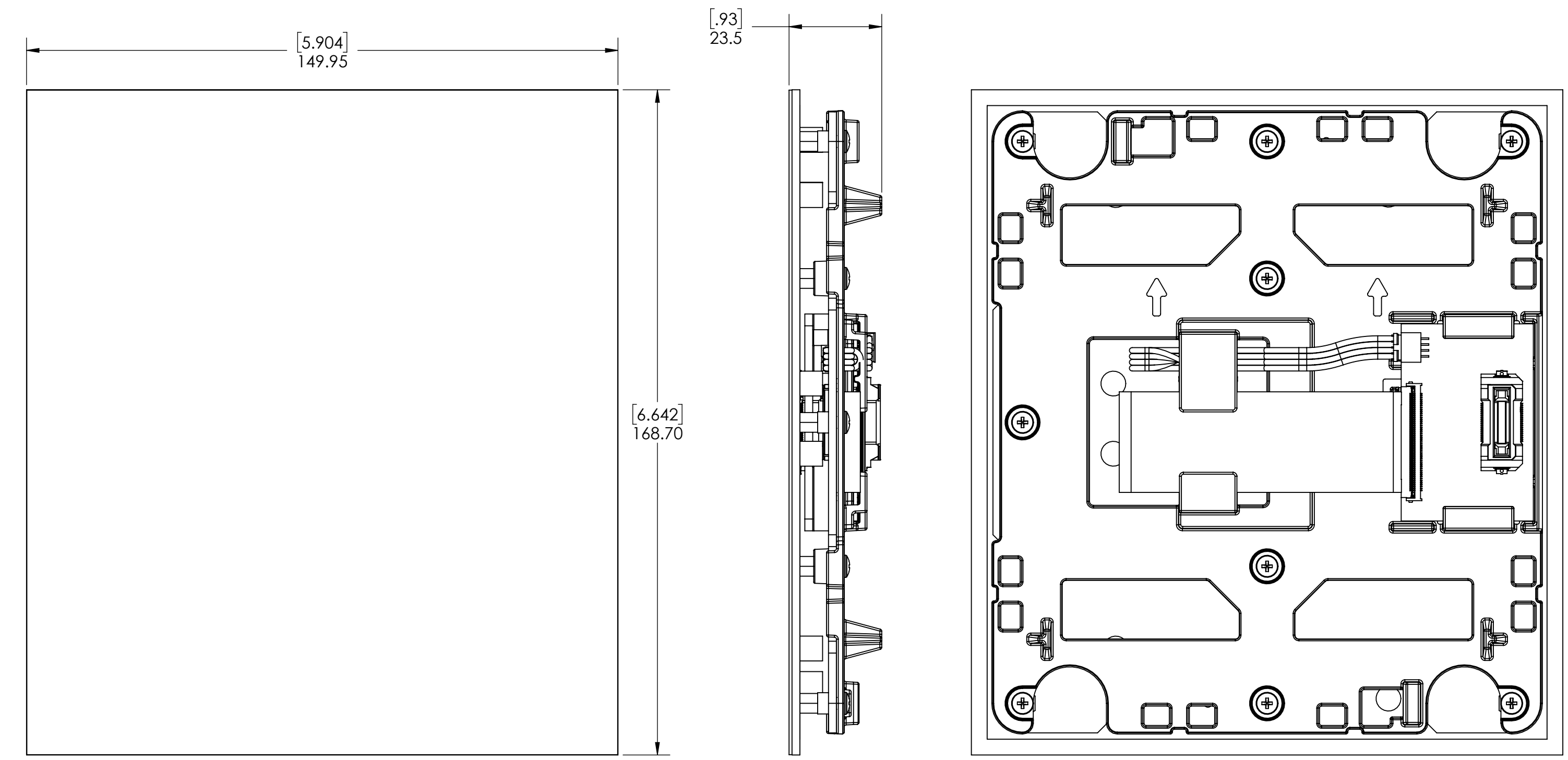
ULTRA LED MOUNT



ULTRA LED MOUNT SPACER



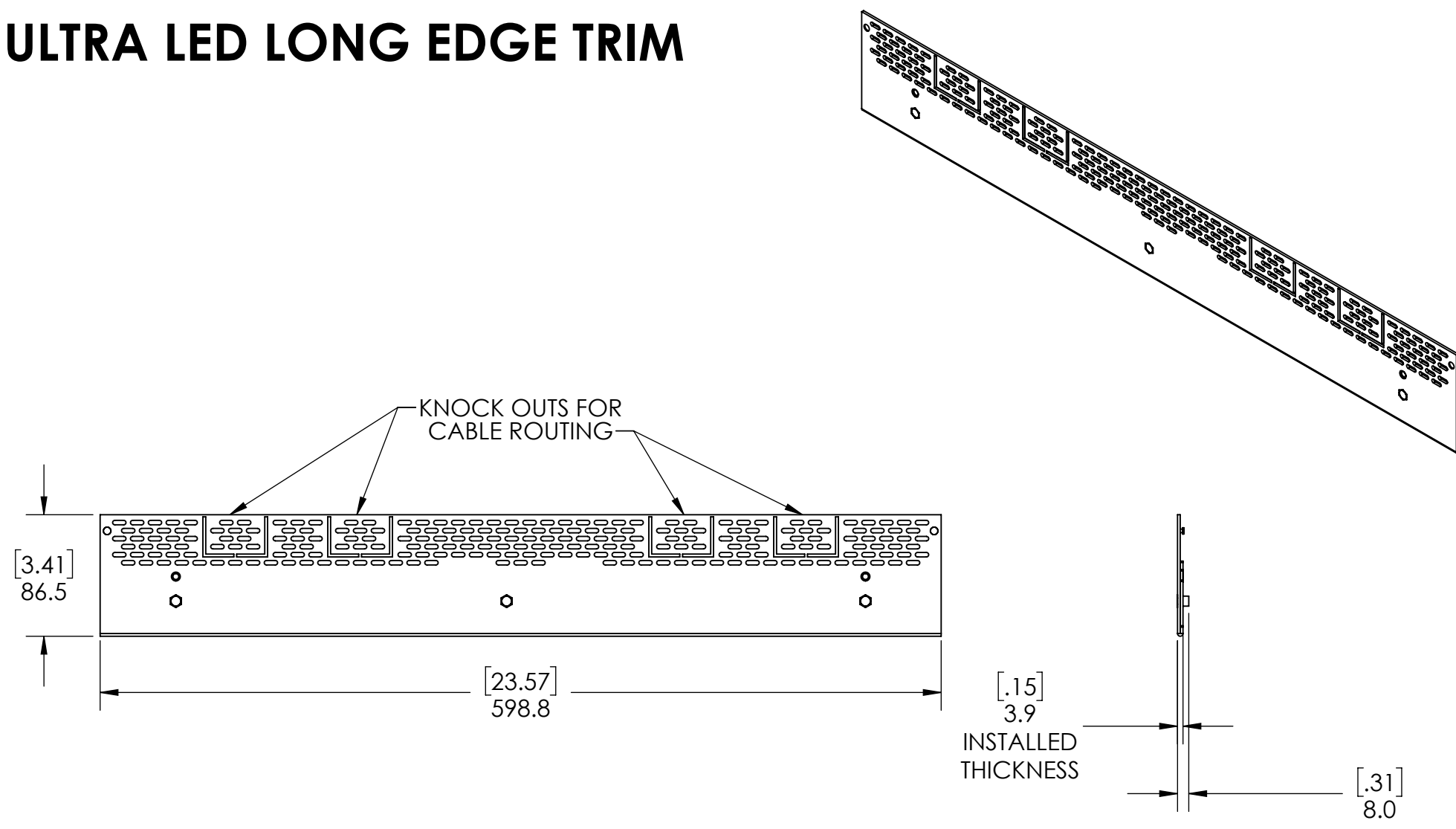
ULTRA LED MODULE



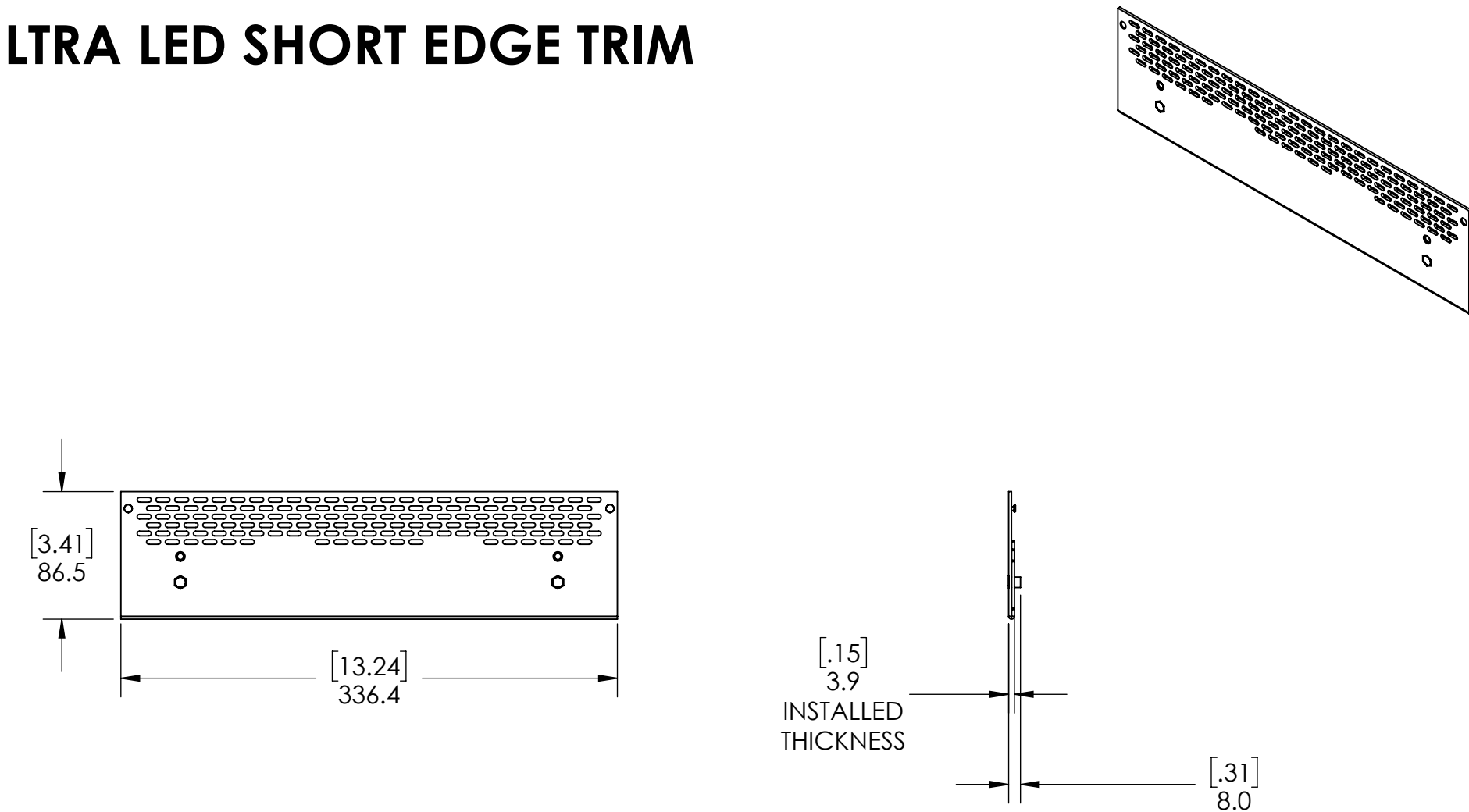
1. SPECIFICATIONS SUBJECT TO CHANGE WITHOUT NOTICE.
NOTES: UNLESS OTHERWISE SPECIFIED.

| | | | |
|--|----------|---|--------------|
| UNLESS OTHERWISE SPECIFIED: DIMENSIONS ARE IN MILLIMETERS (INCHES) | | ENGR BY | |
| TOLERANCES: | | DRAWN BY | |
| X= ±1 | XX= ±.25 | CHECKED BY | |
| .X= ±.5 | ∠= ±1° | USED ON | |
| DIMENSIONING AND TOLERANCING PER ASME Y14.5M-1994 | | MATERIAL | |
| THIRD ANGLE PROJECTION | | FINISH | |
| | | | |
| <p>THIS DRAWING CONTAINS INFORMATION PROPRIETARY TO PLANAR SYSTEMS, INC. ANY REPRODUCTION IN PART OR WHOLE WITHOUT THE WRITTEN PERMISSION OF PLANAR SYSTEMS IS PROHIBITED. THIS DRAWING IS SUPPLIED FOR INFORMATION, IDENTIFICATION, ENGINEERING, EVALUATION, AND/OR INSPECTION PURPOSES ONLY AND MAY NOT BE USED AS BASIS FOR THE MANUFACTURING OF PRODUCTS OR THE FURNISHING OF SERVICES TO PLANAR SYSTEMS OR TO ANY THIRD PARTY UNLESS AUTHORIZED IN WRITING BY PLANAR SYSTEMS.</p> | | <p>PLANAR SYSTEMS, INC. 1195 NE COMPTON DRIVE HILLSBORO, OR 97006 USA</p> | |
| TITLE | | <p>ULTRA LED COMPONENTS</p> | |
| SIZE | PART NO. | DRAWING NO. | REV. |
| D | - | - | - |
| SCALE | 1:3 | DO NOT SCALE | SHEET 2 OF 6 |

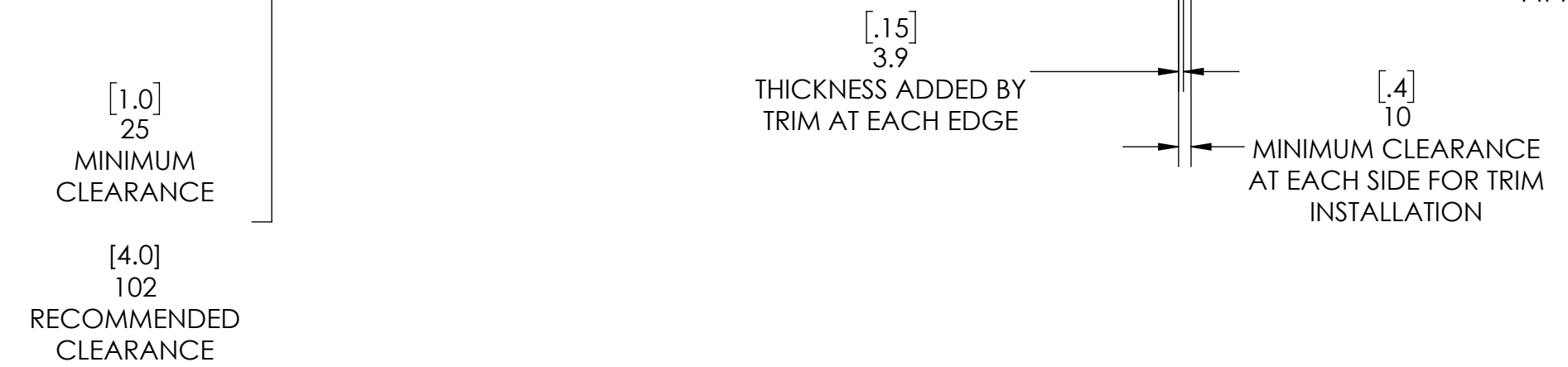
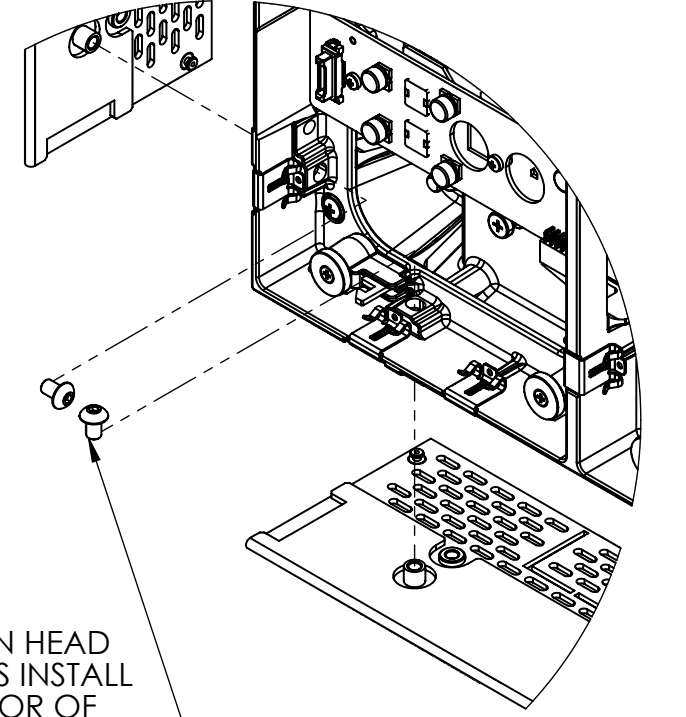
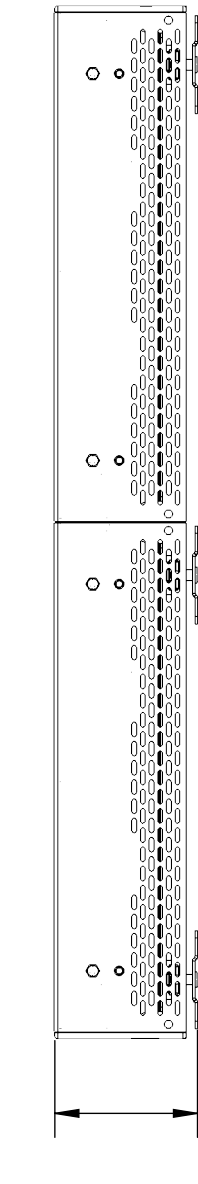
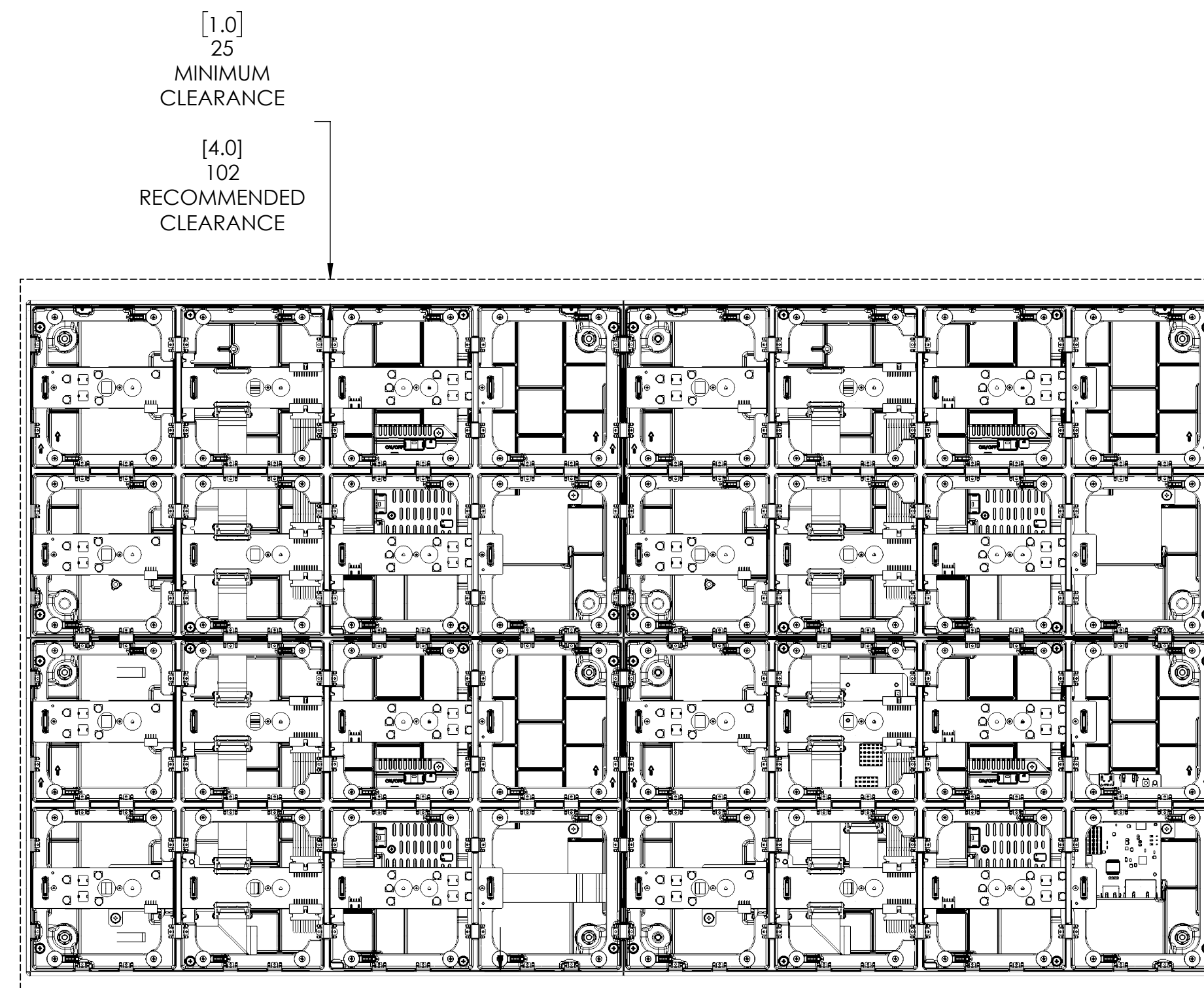
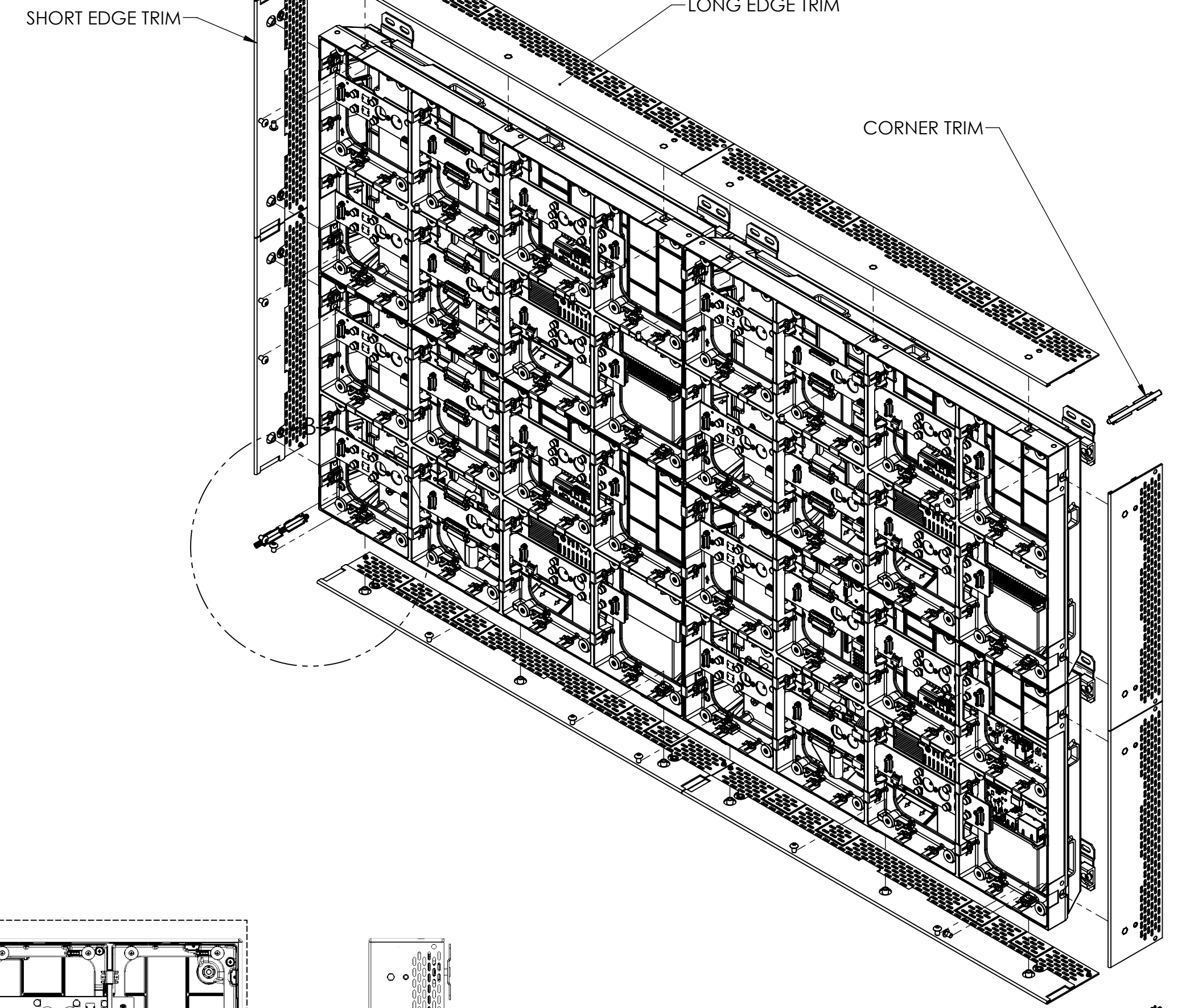
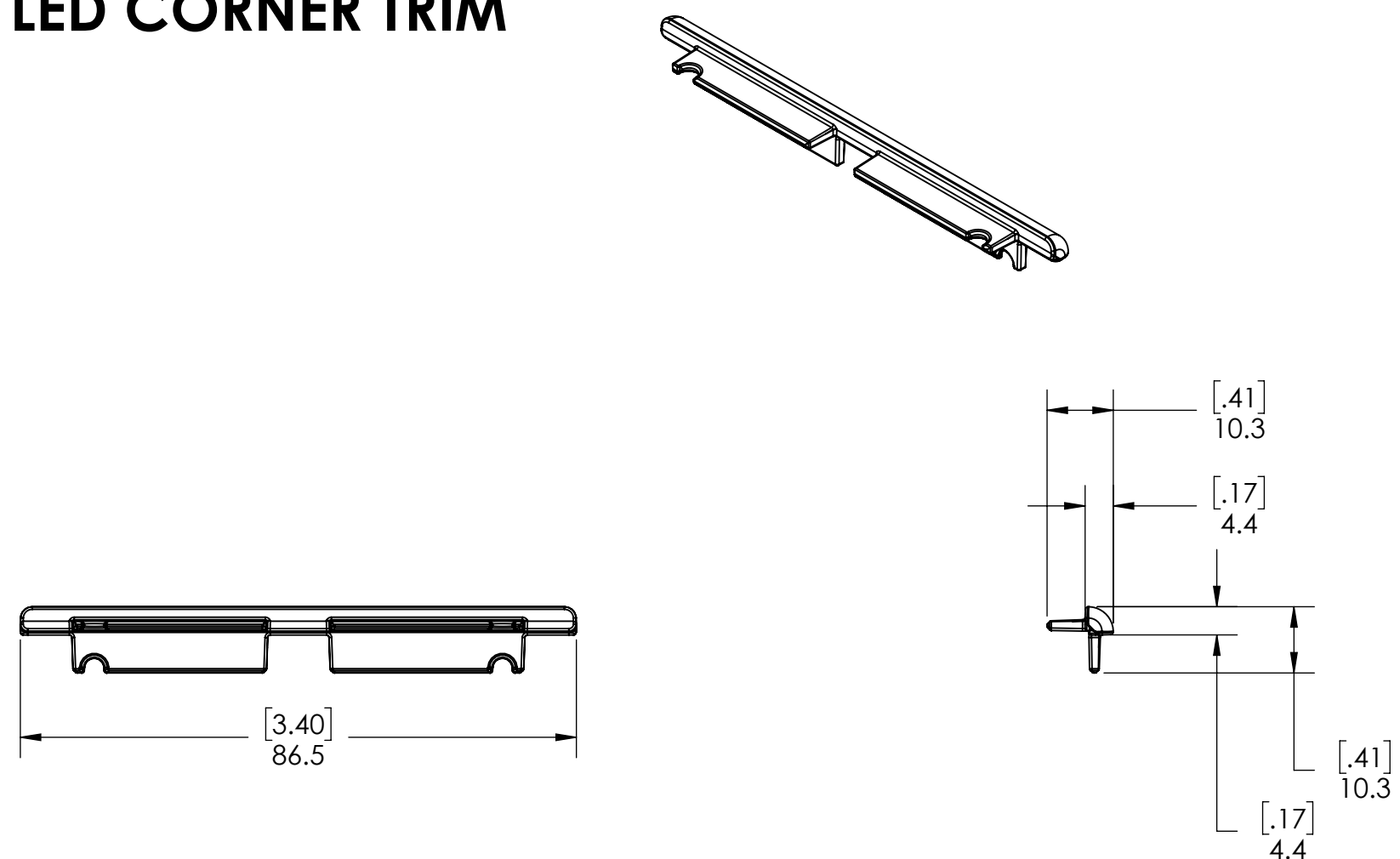
ULTRA LED LONG EDGE TRIM



ULTRA LED SHORT EDGE TRIM

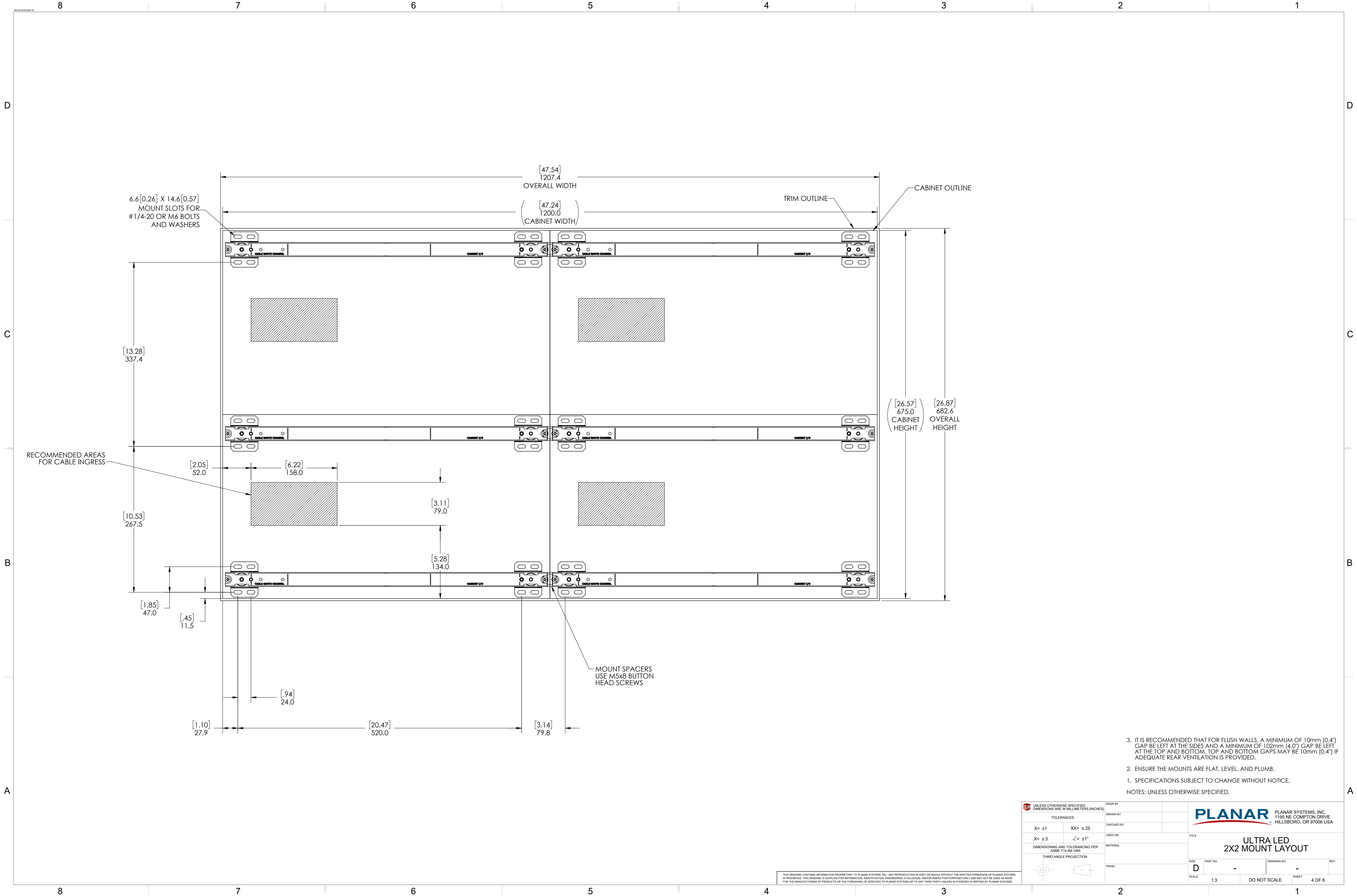


ULTRA LED CORNER TRIM



- 2. TRIM IS NECESSARY FOR ALL INSTALLATIONS FOR CORRECT MODULE ALIGNMENT AND SHOULD BE INSTALLED PRIOR TO MODULES.
 - 1. SPECIFICATIONS SUBJECT TO CHANGE WITHOUT NOTICE.
- NOTES: UNLESS OTHERWISE SPECIFIED.

| | | | | | | | | | | | | | | | | | | | | |
|--|----------|---|-----------------------------------|-----------|-------|--|----------------|--|------|----------|-------------|-----|---|---|---|----|-------|-----|--------------|--------------|
| UNLESS OTHERWISE SPECIFIED DIMENSIONS ARE IN MILLIMETERS (INCHES) | | ENGR BY | MTS | 19 Feb 20 | | | | | | | | | | | | | | | | |
| TOLERANCES: | | DRAWN BY | MTS | 19 Feb 20 | | | | | | | | | | | | | | | | |
| X= ±1 | XX= ±.25 | CHECKED BY | | | | | | | | | | | | | | | | | | |
| X= ±.5 | ∠= ±1° | USED ON | | | | | | | | | | | | | | | | | | |
| DIMENSIONING AND TOLERANCING PER ASME Y14.5M-1994 | | MATERIAL | 14 GA CRS OR PLANAR APPROV EQUIV. | | | | | | | | | | | | | | | | | |
| THIRD ANGLE PROJECTION | | FINISH | | | | | | | | | | | | | | | | | | |
| | | | | | | | | | | | | | | | | | | | | |
| <small>THIS DRAWING CONTAINS INFORMATION PROPRIETARY TO PLANAR SYSTEMS, INC. ANY REPRODUCTION IN PART OR WHOLE WITHOUT THE WRITTEN PERMISSION OF PLANAR SYSTEMS IS PROHIBITED. THIS DRAWING IS SUPPLIED FOR INFORMATION, IDENTIFICATION, ENGINEERING, EVALUATION, AND/OR INSPECTION PURPOSES ONLY AND MAY NOT BE USED AS BASIS FOR THE MANUFACTURING OF PRODUCTS OR THE FURNISHING OF SERVICES TO PLANAR SYSTEMS OR TO ANY THIRD PARTY UNLESS AUTHORIZED IN WRITING BY PLANAR SYSTEMS.</small> | | <table border="1"> <tr> <td colspan="2">TITLE</td> <td colspan="2">ULTRA LED TRIM</td> </tr> <tr> <td>SIZE</td> <td>PART NO.</td> <td>DRAWING NO.</td> <td>REV</td> </tr> <tr> <td>D</td> <td>-</td> <td>-</td> <td>06</td> </tr> <tr> <td>SCALE</td> <td>1:4</td> <td>DO NOT SCALE</td> <td>SHEET 3 OF 6</td> </tr> </table> | | | TITLE | | ULTRA LED TRIM | | SIZE | PART NO. | DRAWING NO. | REV | D | - | - | 06 | SCALE | 1:4 | DO NOT SCALE | SHEET 3 OF 6 |
| TITLE | | ULTRA LED TRIM | | | | | | | | | | | | | | | | | | |
| SIZE | PART NO. | DRAWING NO. | REV | | | | | | | | | | | | | | | | | |
| D | - | - | 06 | | | | | | | | | | | | | | | | | |
| SCALE | 1:4 | DO NOT SCALE | SHEET 3 OF 6 | | | | | | | | | | | | | | | | | |

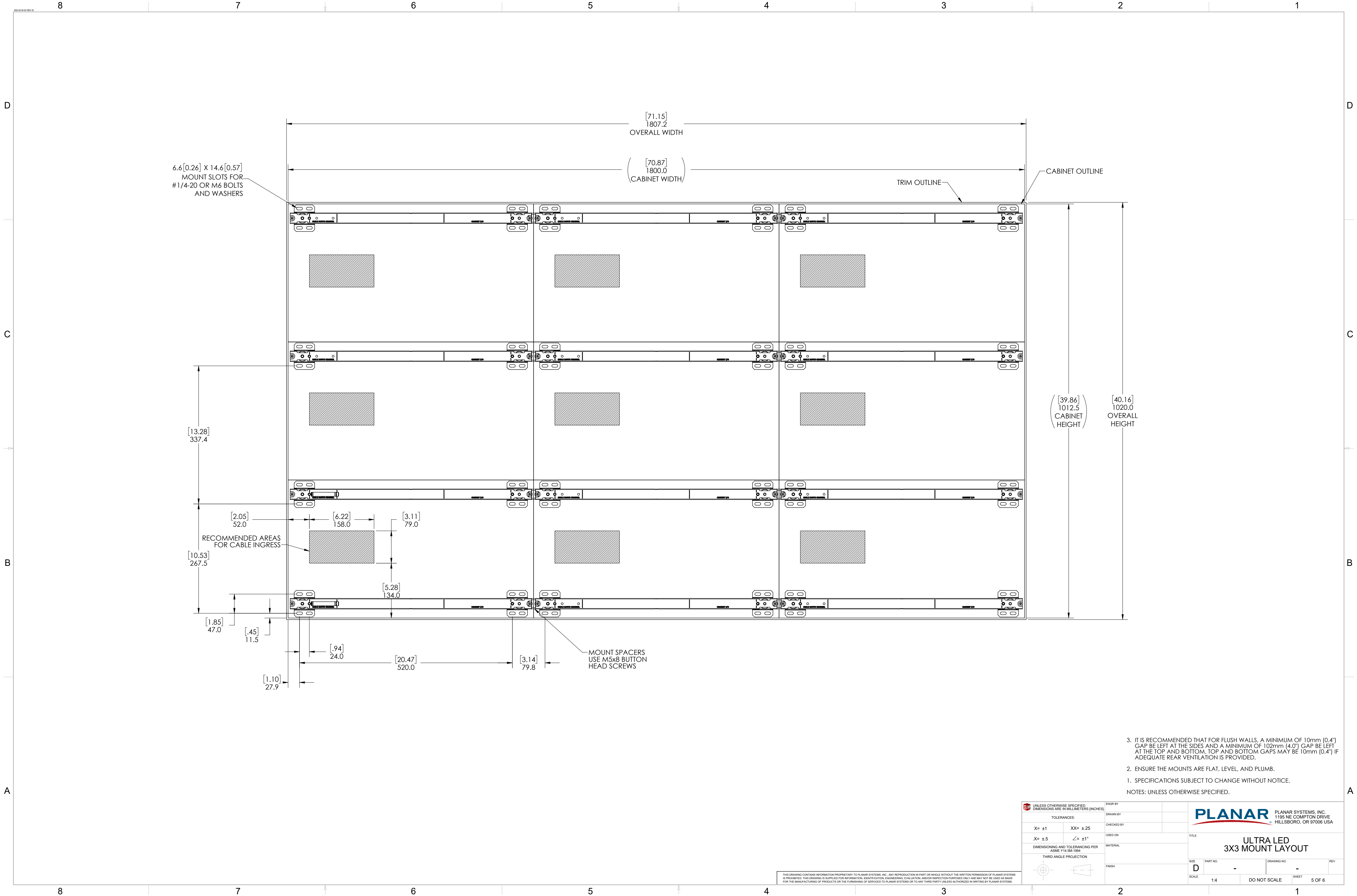


- IT IS RECOMMENDED THAT FOR FLUSH WALLS, A MINIMUM OF 10mm (0.4") GAP BE LEFT AT THE SIDES AND A MINIMUM OF 102mm (4.0") GAP BE LEFT AT THE TOP AND BOTTOM. TOP AND BOTTOM GAPS MAY BE 10mm (0.4") IF ADEQUATE REAR VENTILATION IS PROVIDED.
 - ENSURE THE MOUNTS ARE FLAT, LEVEL, AND PLUMB.
 - SPECIFICATIONS SUBJECT TO CHANGE WITHOUT NOTICE.
- NOTES: UNLESS OTHERWISE SPECIFIED.

| | | | |
|--|----------|------------|--|
| UNLESS OTHERWISE SPECIFIED, DIMENSIONS ARE IN MILLIMETERS (INCHES) | | ENGR BY | |
| TOLERANCES: | | DRAWN BY | |
| X= ±1 | XX= ±.25 | CHECKED BY | |
| .X= ±.5 | ∠= ±1° | USED ON | |
| DIMENSIONING AND TOLERANCING PER ASME Y14.5M-1994 | | MATERIAL | |
| THIRD ANGLE PROJECTION | | FINISH | |
| | | | |
| | | | |

| | | | |
|---|----------|--|--------------|
| | | PLANAR SYSTEMS, INC. 1195 NE COMPTON DRIVE HILLSBORO, OR 97006 USA | |
| TITLE ULTRA LED 2X2 MOUNT LAYOUT | | | |
| SIZE | PART NO. | DRAWING NO. | REV. |
| D | - | - | - |
| SCALE | 1:3 | DO NOT SCALE | SHEET 4 OF 6 |

THIS DRAWING CONTAINS INFORMATION PROPRIETARY TO PLANAR SYSTEMS, INC. ANY REPRODUCTION IN PART OR WHOLE WITHOUT THE WRITTEN PERMISSION OF PLANAR SYSTEMS IS PROHIBITED. THIS DRAWING IS SUPPLIED FOR INFORMATION, IDENTIFICATION, ENGINEERING, EVALUATION, AND/OR INSPECTION PURPOSES ONLY AND MAY NOT BE USED AS BASIS FOR THE MANUFACTURING OF PRODUCTS OR THE FURNISHING OF SERVICES TO PLANAR SYSTEMS OR TO ANY THIRD PARTY UNLESS AUTHORIZED IN WRITING BY PLANAR SYSTEMS.



6.6 [0.26] x 14.6 [0.57]
MOUNT SLOTS FOR
#1/4-20 OR M6 BOLTS
AND WASHERS

[13.28]
337.4

[10.53]
267.5

[1.85]
47.0

[.45]
11.5

[1.10]
27.9

[2.05]
52.0

[6.22]
158.0

[3.11]
79.0

[5.28]
134.0

[.94]
24.0

[20.47]
520.0

[3.14]
79.8

[71.15]
1807.2
OVERALL WIDTH

[70.87]
1800.0
CABINET WIDTH

TRIM OUTLINE

CABINET OUTLINE

[39.86]
1012.5
CABINET
HEIGHT

[40.16]
1020.0
OVERALL
HEIGHT

RECOMMENDED AREAS
FOR CABLE INGRESS

MOUNT SPACERS
USE M5x8 BUTTON
HEAD SCREWS

3. IT IS RECOMMENDED THAT FOR FLUSH WALLS, A MINIMUM OF 10mm (0.4") GAP BE LEFT AT THE SIDES AND A MINIMUM OF 102mm (4.0") GAP BE LEFT AT THE TOP AND BOTTOM. TOP AND BOTTOM GAPS MAY BE 10mm (0.4") IF ADEQUATE REAR VENTILATION IS PROVIDED.
 2. ENSURE THE MOUNTS ARE FLAT, LEVEL, AND PLUMB.
 1. SPECIFICATIONS SUBJECT TO CHANGE WITHOUT NOTICE.
- NOTES: UNLESS OTHERWISE SPECIFIED.

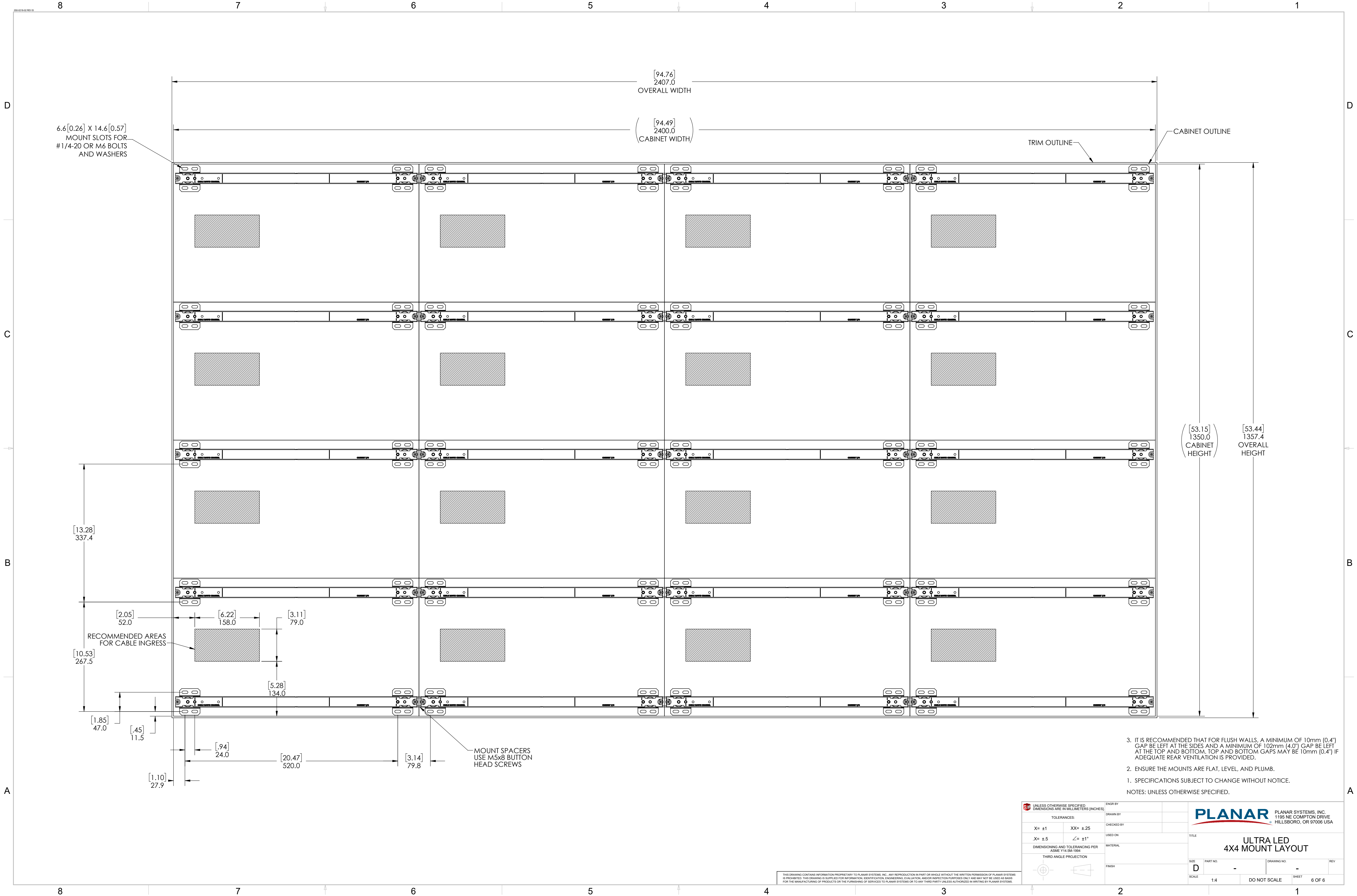
| | | | |
|--|----------|------------|--|
| UNLESS OTHERWISE SPECIFIED DIMENSIONS ARE IN MILLIMETERS (INCHES) | | ENGR BY | |
| TOLERANCES: | | DRAWN BY | |
| X= ±1 | XX= ±.25 | CHECKED BY | |
| .X= ±.5 | ∠= ±1° | USED ON | |
| DIMENSIONING AND TOLERANCING PER ASME Y14.5M-1994 | | MATERIAL | |
| THIRD ANGLE PROJECTION | | FINISH | |
| | | | |
| | | | |

PLANAR SYSTEMS, INC.
1195 NE COMPTON DRIVE
HILLSBORO, OR 97006 USA

TITLE
**ULTRA LED
3X3 MOUNT LAYOUT**

| | | | |
|-------|----------|--------------|--------------|
| SIZE | PART NO. | DRAWING NO. | REV. |
| D | - | - | - |
| SCALE | 1:4 | DO NOT SCALE | SHEET 5 OF 6 |

THIS DRAWING CONTAINS INFORMATION PROPRIETARY TO PLANAR SYSTEMS, INC. ANY REPRODUCTION IN PART OR WHOLE WITHOUT THE WRITTEN PERMISSION OF PLANAR SYSTEMS IS PROHIBITED. THIS DRAWING IS SUPPLIED FOR INFORMATION, IDENTIFICATION, ENGINEERING, EVALUATION, AND/OR INSPECTION PURPOSES ONLY AND MAY NOT BE USED AS BASIS FOR THE MANUFACTURING OF PRODUCTS OR THE FURNISHING OF SERVICES TO PLANAR SYSTEMS OR TO ANY THIRD PARTY UNLESS AUTHORIZED IN WRITING BY PLANAR SYSTEMS.



6.6 [0.26] X 14.6 [0.57]
MOUNT SLOTS FOR
#1/4-20 OR M6 BOLTS
AND WASHERS

[13.28]
337.4

[10.53]
267.5

[1.85]
47.0

[.45]
11.5

[1.10]
27.9

[2.05]
52.0

[6.22]
158.0

[3.11]
79.0

[5.28]
134.0

[.94]
24.0

[20.47]
520.0

[3.14]
79.8

[94.76]
2407.0
OVERALL WIDTH

([94.49]
2400.0)
CABINET WIDTH

TRIM OUTLINE

CABINET OUTLINE

([53.15]
1350.0)
CABINET
HEIGHT

[53.44]
1357.4
OVERALL
HEIGHT

MOUNT SPACERS
USE M5x8 BUTTON
HEAD SCREWS

3. IT IS RECOMMENDED THAT FOR FLUSH WALLS, A MINIMUM OF 10mm (0.4") GAP BE LEFT AT THE SIDES AND A MINIMUM OF 102mm (4.0") GAP BE LEFT AT THE TOP AND BOTTOM. TOP AND BOTTOM GAPS MAY BE 10mm (0.4") IF ADEQUATE REAR VENTILATION IS PROVIDED.
 2. ENSURE THE MOUNTS ARE FLAT, LEVEL, AND PLUMB.
 1. SPECIFICATIONS SUBJECT TO CHANGE WITHOUT NOTICE.
- NOTES: UNLESS OTHERWISE SPECIFIED.

| | | | |
|--|----------|------------|--|
| UNLESS OTHERWISE SPECIFIED DIMENSIONS ARE IN MILLIMETERS (INCHES) | | ENGR BY | |
| TOLERANCES: | | DRAWN BY | |
| X= ±1 | XX= ±.25 | CHECKED BY | |
| .X= ±.5 | ∠= ±1° | USED ON | |
| DIMENSIONING AND TOLERANCING PER ASME Y14.5M-1994 | | MATERIAL | |
| THIRD ANGLE PROJECTION | | FINISH | |
| | | | |

| | | | |
|---------------------------------------|----------|--|--------------|
| | | PLANAR SYSTEMS, INC. 1195 NE COMPTON DRIVE HILLSBORO, OR 97006 USA | |
| ULTRA LED 4X4 MOUNT LAYOUT | | | |
| SIZE | PART NO. | DRAWING NO. | REV. |
| D | - | - | - |
| SCALE | 1:4 | DO NOT SCALE | SHEET 6 OF 6 |

THIS DRAWING CONTAINS INFORMATION PROPRIETARY TO PLANAR SYSTEMS, INC. ANY REPRODUCTION IN PART OR WHOLE WITHOUT THE WRITTEN PERMISSION OF PLANAR SYSTEMS IS PROHIBITED. THIS DRAWING IS SUPPLIED FOR INFORMATION, IDENTIFICATION, ENGINEERING, EVALUATION, AND/OR INSPECTION PURPOSES ONLY AND MAY NOT BE USED AS BASIS FOR THE MANUFACTURING OF PRODUCTS OR THE FURNISHING OF SERVICES TO PLANAR SYSTEMS OR TO ANY THIRD PARTY UNLESS AUTHORIZED IN WRITING BY PLANAR SYSTEMS.