
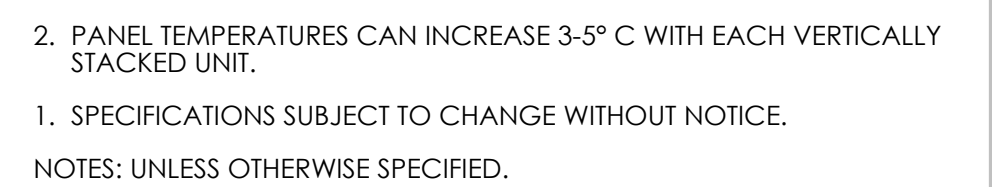
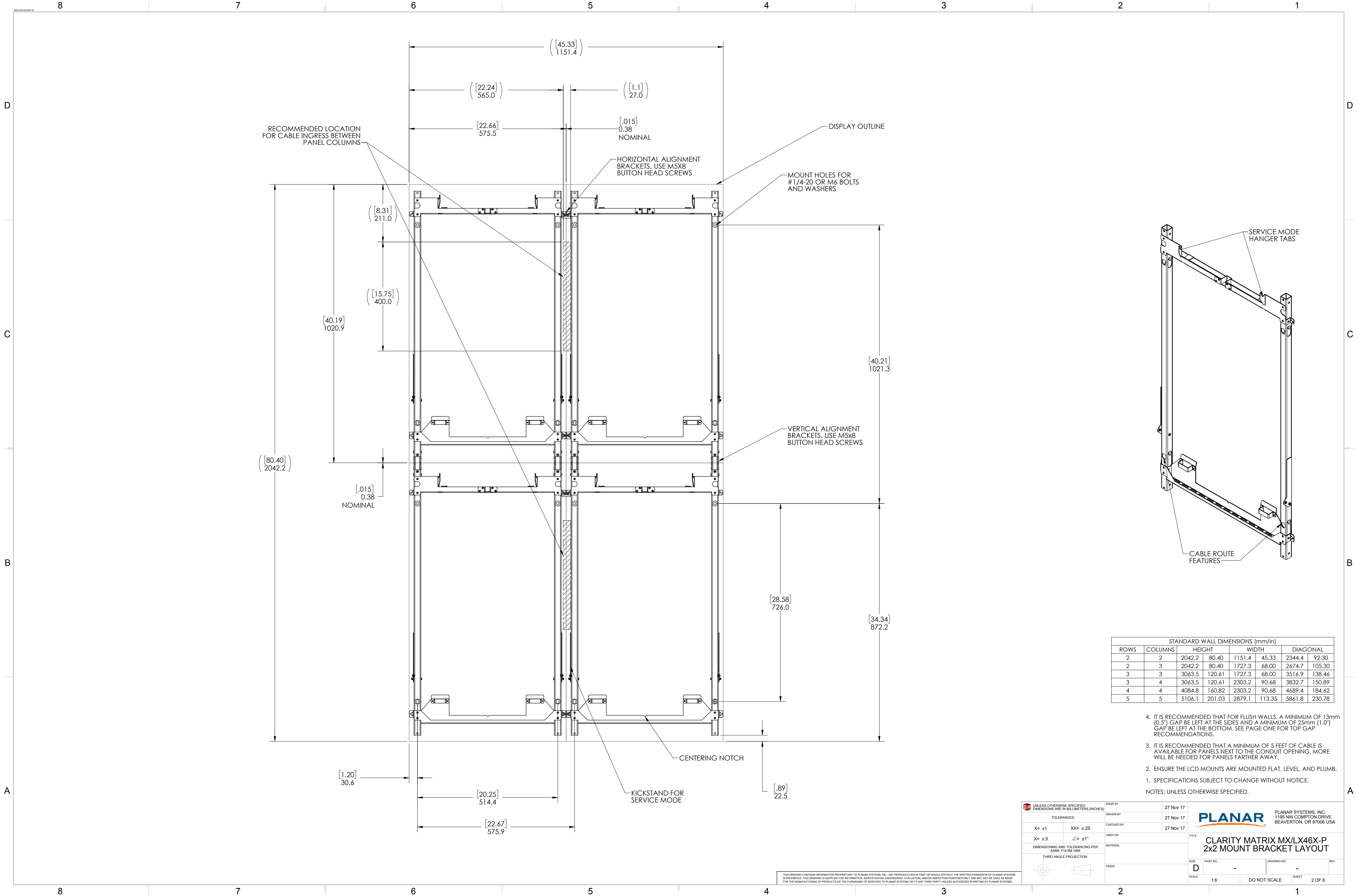


UNLESS OTHERWISE SPECIFIED DIMENSIONS ARE IN MILLIMETERS [INCHES]		ENGR BY	27 Nov 17	<div>PLANAR</div> <div>PLANAR SYSTEMS, INC. 1195 NW COMPTON DRIVE MAXVILLON, OR 97006 USA</div>
TOLERANCES:		DRAWN BY	27 Nov 17	
X= ±1	XX= ±2.5	CHECKED BY	27 Nov 17	
X= ±5	Z= ±1*	USED ON		
DIMENSIONING AND TOLERANCING PER ASME Y14.5M-1994		MATERIAL		
THIRD ANGLE PROJECTION		FINISH		TITLE CLARITY MATRIX MX/LX46X-P PRODUCT OUTLINE
		SIZE D PART NO. - DRAWING NO. - REV		
		SCALE 1:6 DO NOT SCALE SHEET 1 OF 8		



THIS DRAWING CONTAINS INFORMATION PROPRIETARY TO PLANAR SYSTEMS, INC. ANY REPRODUCTION IN PART OR WHOLE WITHOUT THE WRITTEN PERMISSION OF PLANAR SYSTEMS IS PROHIBITED. THIS DRAWING IS SUPPLIED FOR INFORMATION, IDENTIFICATION, ENGINEERING, EVALUATION, AND/OR INSPECTION PURPOSES ONLY AND MAY NOT BE USED AS BASIS FOR THE MANUFACTURING OF PRODUCTS OR THE FURNISHING OF SERVICES TO PLANAR SYSTEMS OR TO ANY THIRD PARTY UNLESS AUTHORIZED IN WRITING BY PLANAR SYSTEMS.



STANDARD WALL DIMENSIONS (mm/in)					
ROWS	COLUMNS	HEIGHT	WIDTH	DIAGONAL	
2	2	2042.2	80.40	1151.4	45.33
2	3	2042.2	80.40	1727.3	68.00
3	3	3063.5	120.61	1727.3	68.00
3	4	3063.5	120.61	2303.2	90.68
4	4	4084.8	160.82	2303.2	90.68
5	5	5106.1	201.03	2879.1	113.35

4. IT IS RECOMMENDED THAT FOR FLUSH WALLS, A MINIMUM OF 13mm (0.5") GAP BE LEFT AT THE SIDES AND A MINIMUM OF 25mm (1.0") GAP BE LEFT AT THE BOTTOM. SEE PAGE ONE FOR TOP GAP RECOMMENDATIONS.
3. IT IS RECOMMENDED THAT A MINIMUM OF 5 FEET OF CABLE IS AVAILABLE FOR PANELS NEXT TO THE CONDUIT OPENING. MORE WILL BE NEEDED FOR PANELS FARTHER AWAY.
2. ENSURE THE LCD MOUNTS ARE MOUNTED FLAT, LEVEL, AND PLUMB.
1. SPECIFICATIONS SUBJECT TO CHANGE WITHOUT NOTICE.
- NOTES: UNLESS OTHERWISE SPECIFIED.

UNLESS OTHERWISE SPECIFIED, DIMENSIONS ARE IN MILLIMETERS (INCHES)

TOLERANCES:

X= ±1

XX= ±.25

.X= ±.5

∠= ±1°

DIMENSIONING AND TOLERANCING PER ASME Y14.5M-1994

THIRD ANGLE PROJECTION

ENG'D BY

DRAWN BY

CHECKED BY

USED ON

MATERIAL

FINISH

27 Nov 17

27 Nov 17

27 Nov 17

PLANAR

PLANAR SYSTEMS, INC.
1195 NW COMPTON DRIVE
BEAVERTON, OR 97006 USA

TITLE

CLARITY MATRIX MX/LX46X-P
2x2 MOUNT BRACKET LAYOUT

SIZE

PART NO.

DRAWING NO.

REV

SCALE

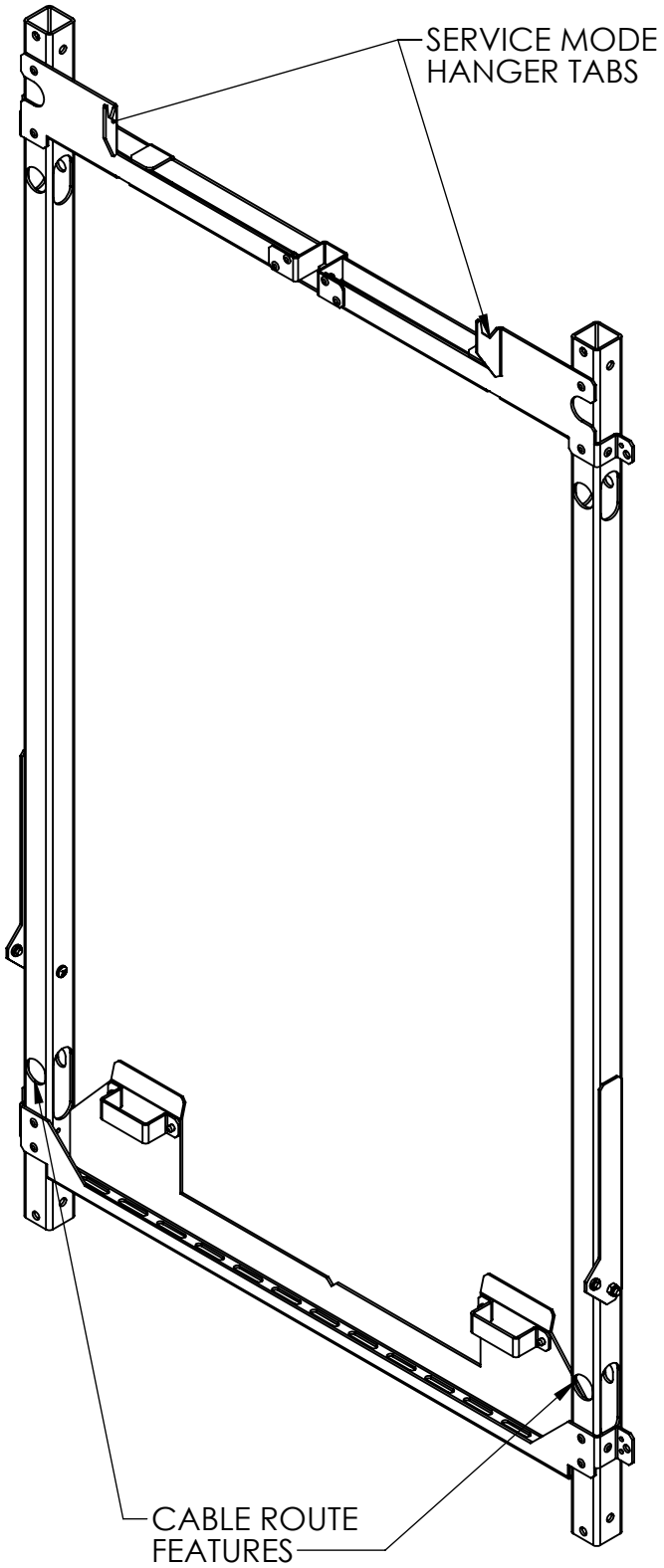
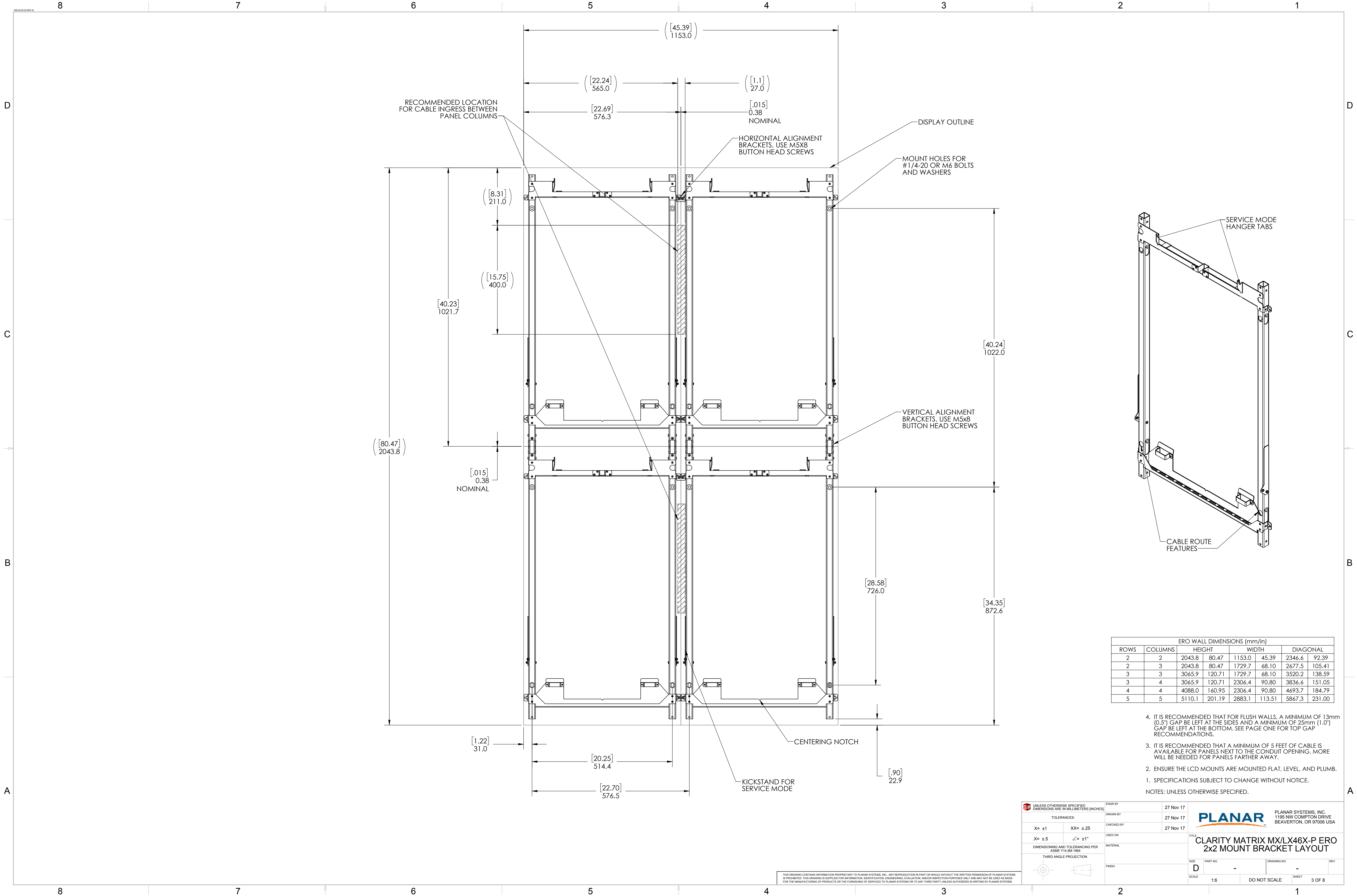
1:6

DO NOT SCALE

SHEET

2 OF 8

THIS DRAWING CONTAINS INFORMATION PROPRIETARY TO PLANAR SYSTEMS, INC. ANY REPRODUCTION IN PART OR WHOLE WITHOUT THE WRITTEN PERMISSION OF PLANAR SYSTEMS IS PROHIBITED. THIS DRAWING IS SUPPLIED FOR INFORMATION, IDENTIFICATION, ENGINEERING, EVALUATION, AND/OR INSPECTION PURPOSES ONLY AND MAY NOT BE USED AS BASIS FOR THE MANUFACTURING OF PRODUCTS OR THE FURNISHING OF SERVICES TO PLANAR SYSTEMS OR TO ANY THIRD PARTY UNLESS AUTHORIZED IN WRITING BY PLANAR SYSTEMS.



ERO WALL DIMENSIONS (mm/in)						
ROWS	COLUMNS	HEIGHT	WIDTH		DIAGONAL	
2	2	2043.8	80.47	1153.0	45.39	2346.6
2	3	2043.8	80.47	1729.7	68.10	2677.5
3	3	3065.9	120.71	1729.7	68.10	3520.2
3	4	3065.9	120.71	2306.4	90.80	3836.6
4	4	4088.0	160.95	2306.4	90.80	4693.7
5	5	5110.1	201.19	2883.1	113.51	5867.3

4. IT IS RECOMMENDED THAT FOR FLUSH WALLS, A MINIMUM OF 13mm (0.5") GAP BE LEFT AT THE SIDES AND A MINIMUM OF 25mm (1.0") GAP BE LEFT AT THE BOTTOM. SEE PAGE ONE FOR TOP GAP RECOMMENDATIONS.
3. IT IS RECOMMENDED THAT A MINIMUM OF 5 FEET OF CABLE IS AVAILABLE FOR PANELS NEXT TO THE CONDUIT OPENING. MORE WILL BE NEEDED FOR PANELS FARTHER AWAY.
2. ENSURE THE LCD MOUNTS ARE MOUNTED FLAT, LEVEL, AND PLUMB.
1. SPECIFICATIONS SUBJECT TO CHANGE WITHOUT NOTICE.
- NOTES: UNLESS OTHERWISE SPECIFIED.

UNLESS OTHERWISE SPECIFIED
DIMENSIONS ARE IN MILLIMETERS (INCHES)

TOLERANCES:

X= ±1

XX= ±.25

.X= ±.5

∠= ±1°

DIMENSIONING AND TOLERANCING PER
ASME Y14.5M-1994

THIRD ANGLE PROJECTION

ENG'D BY

27 Nov 17

DRAWN BY

27 Nov 17

CHECKED BY

27 Nov 17

USED ON

MATERIAL

FINISH

PLANAR

PLANAR SYSTEMS, INC.
1195 NW COMPTON DRIVE
BEAVERTON, OR 97006 USA

TITLE

CLARITY MATRIX MX/LX46X-P ERO
2x2 MOUNT BRACKET LAYOUT

SIZE

D

PART NO.

-

DRAWING NO.

-

REV

SCALE

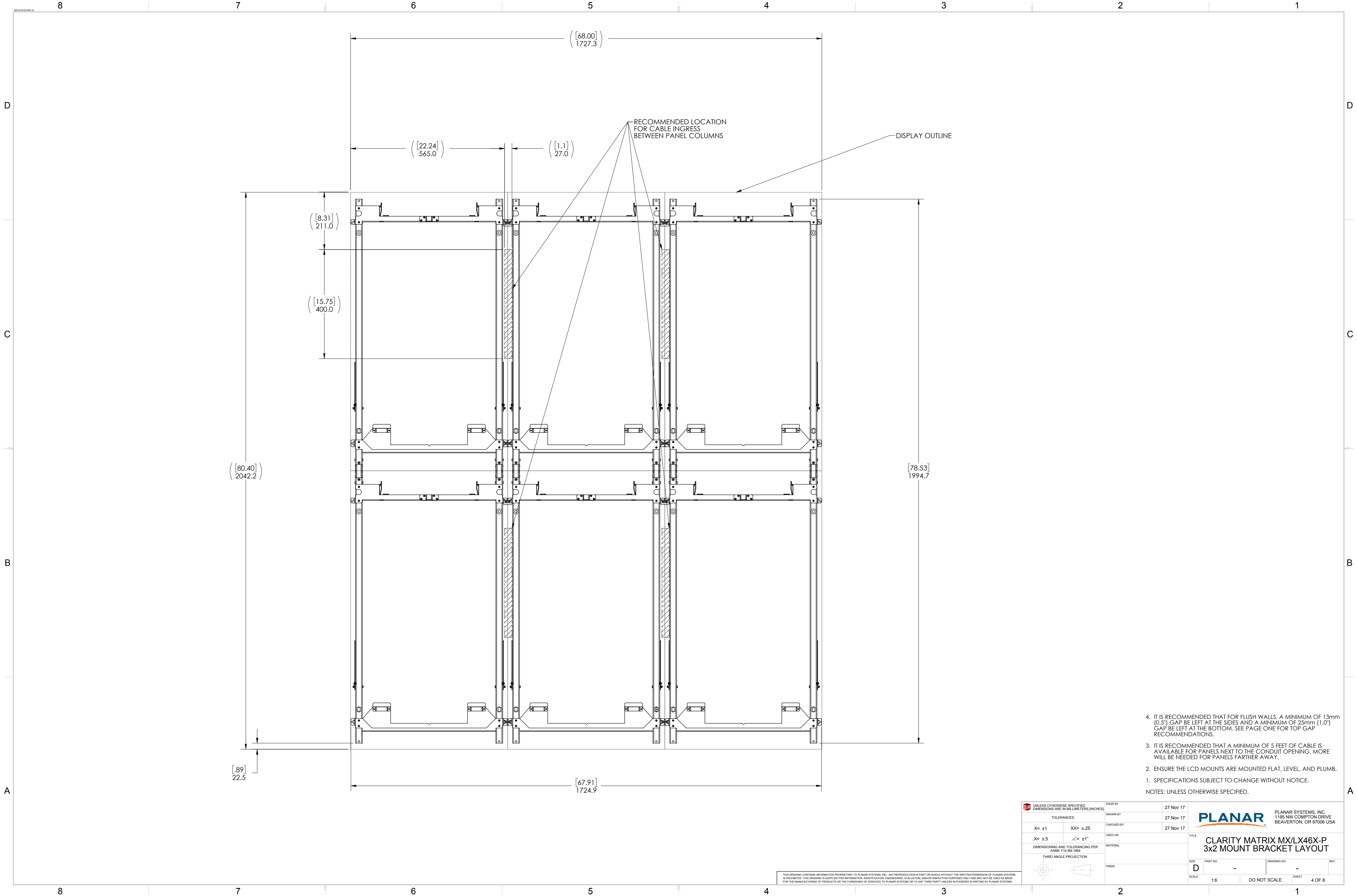
1:6

DO NOT SCALE

SHEET

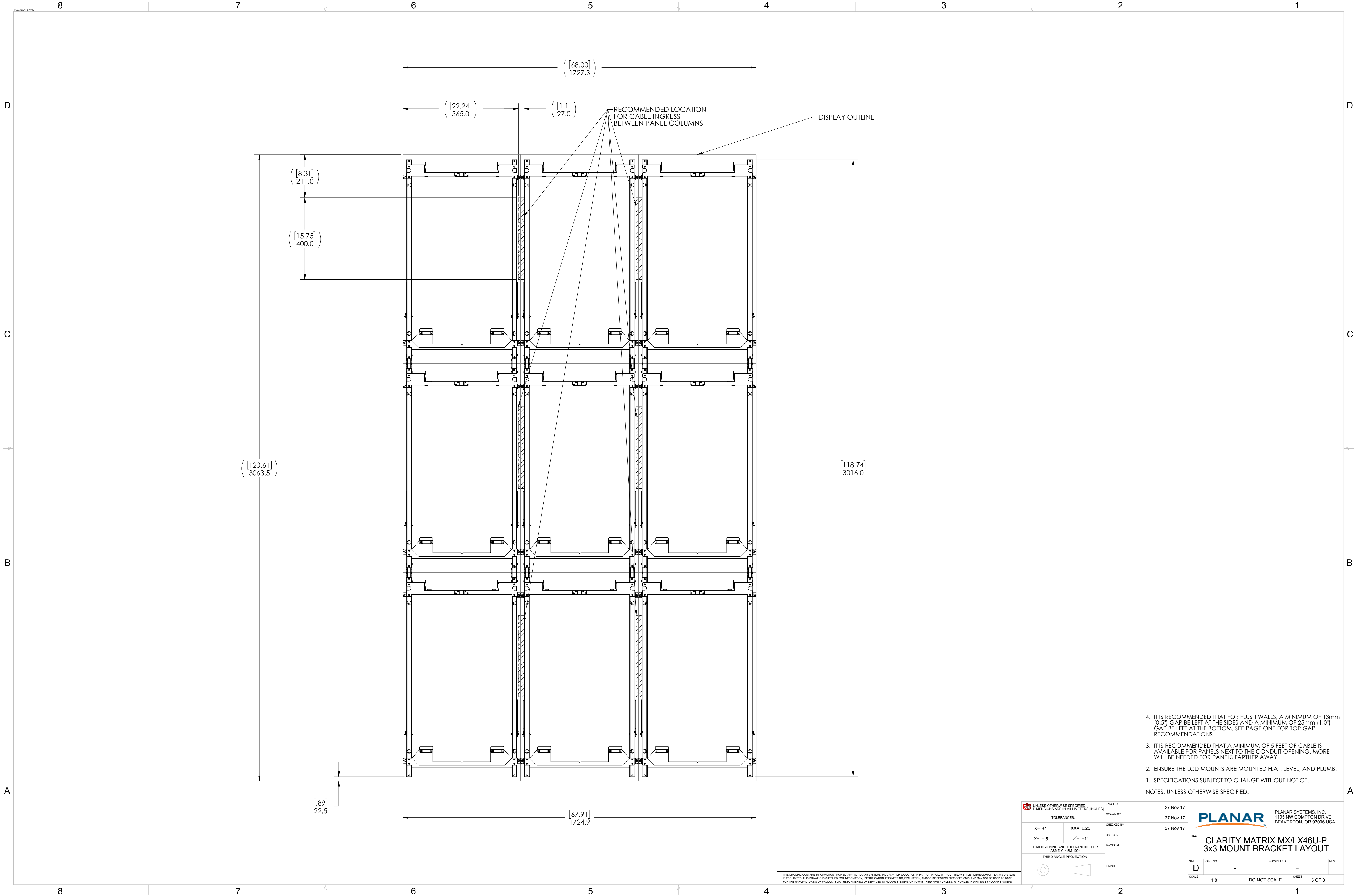
3 OF 8

THIS DRAWING CONTAINS INFORMATION PROPRIETARY TO PLANAR SYSTEMS, INC. ANY REPRODUCTION IN PART OR WHOLE WITHOUT THE WRITTEN PERMISSION OF PLANAR SYSTEMS IS PROHIBITED. THIS DRAWING IS SUPPLIED FOR INFORMATION, IDENTIFICATION, ENGINEERING, EVALUATION, AND/OR INSPECTION PURPOSES ONLY AND MAY NOT BE USED AS BASIS FOR THE MANUFACTURING OF PRODUCTS OR THE FURNISHING OF SERVICES TO PLANAR SYSTEMS OR TO ANY THIRD PARTY UNLESS AUTHORIZED IN WRITING BY PLANAR SYSTEMS.



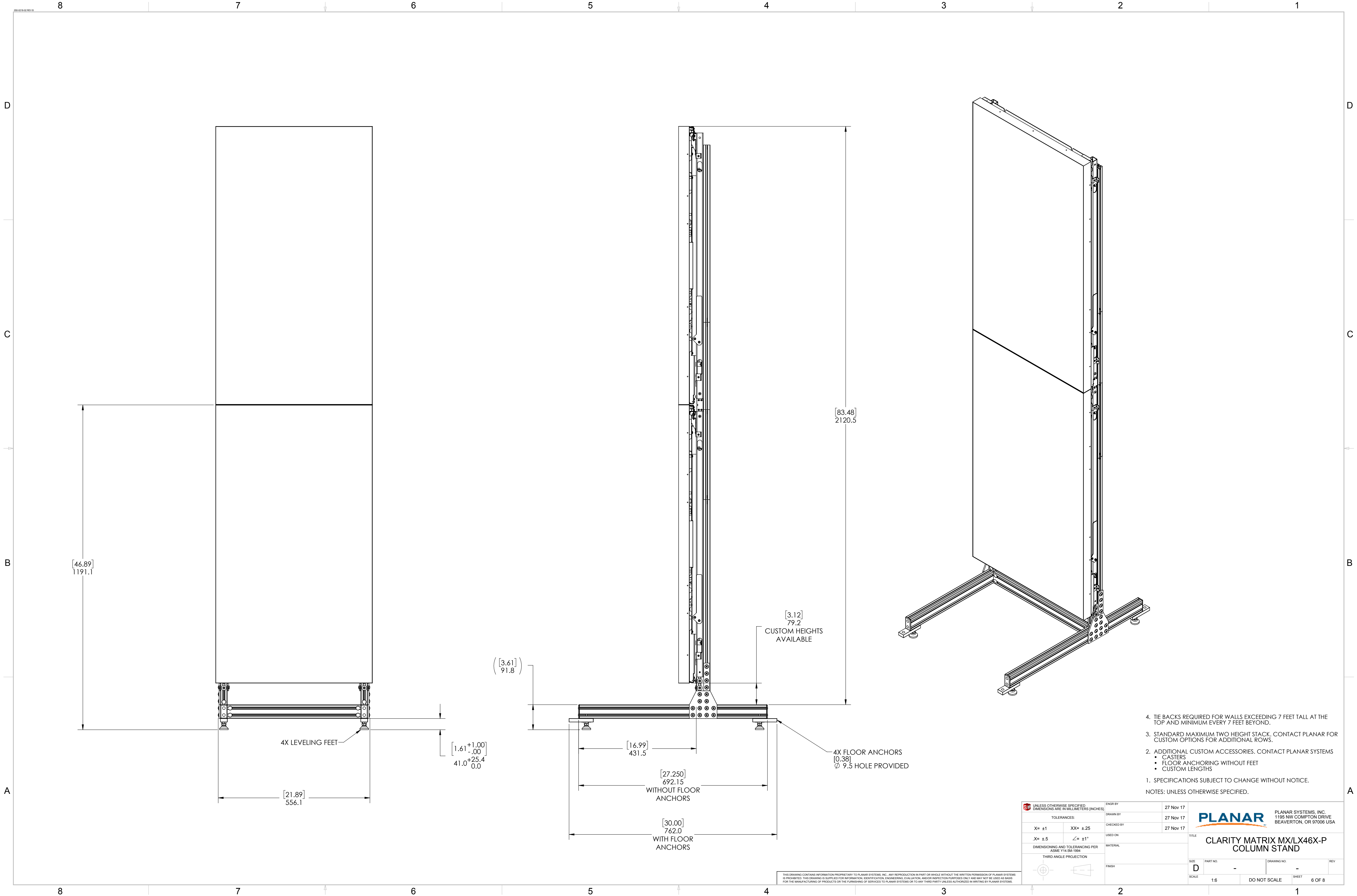
THIS DRAWING CONTAINS INFORMATION PROPRIETARY TO PLANAR SYSTEMS, INC. ANY REPRODUCTION IN PART OR WHOLE WITHOUT THE WRITTEN PERMISSION OF PLANAR SYSTEMS IS PROHIBITED. THIS DRAWING IS SUPPLIED FOR INFORMATION, IDENTIFICATION, ENGINEERING, EVALUATION, AND/OR INSPECTION PURPOSES ONLY AND MAY NOT BE USED AS BASIS FOR THE MANUFACTURING OF PRODUCTS OR THE FURNISHING OF SERVICES TO PLANAR SYSTEMS OR TO ANY THIRD PARTY UNLESS AUTHORIZED IN WRITING BY PLANAR SYSTEMS.

UNLESS OTHERWISE SPECIFIED DIMENSIONS ARE IN MILLIMETERS (INCHES)		ENGR BY	27 Nov 17	PLANAR PLANAR SYSTEMS, INC. 1195 NW COMPTON DRIVE BEAVERTON, OR 97006 USA	
TOLERANCES:		DRAWN BY	27 Nov 17		
X= ±1	XX= ±25	CHECKED BY	27 Nov 17	TITLE CLARITY MATRIX MX/LX46X-P 3x2 MOUNT BRACKET LAYOUT	
.X= ±.5	∠= ±1°	USED ON			
DIMENSIONING AND TOLERANCING PER ASME Y14.5M-1994		MATERIAL		SIZE	PART NO.
THIRD ANGLE PROJECTION		FINISH		DRAWING NO.	REV
				D	-
				SCALE	1:6
				DO NOT SCALE	SHEET 4 OF 8




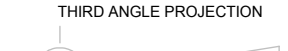
4. IT IS RECOMMENDED THAT FOR FLUSH WALLS, A MINIMUM OF 13mm (0.5") GAP BE LEFT AT THE SIDES AND A MINIMUM OF 25mm (1.0") GAP BE LEFT AT THE BOTTOM. SEE PAGE ONE FOR TOP GAP RECOMMENDATIONS.
 3. IT IS RECOMMENDED THAT A MINIMUM OF 5 FEET OF CABLE IS AVAILABLE FOR PANELS NEXT TO THE CONDUIT OPENING. MORE WILL BE NEEDED FOR PANELS FARTHER AWAY.
 2. ENSURE THE LCD MOUNTS ARE MOUNTED FLAT, LEVEL, AND PLUMB.
 1. SPECIFICATIONS SUBJECT TO CHANGE WITHOUT NOTICE.
- NOTES: UNLESS OTHERWISE SPECIFIED.

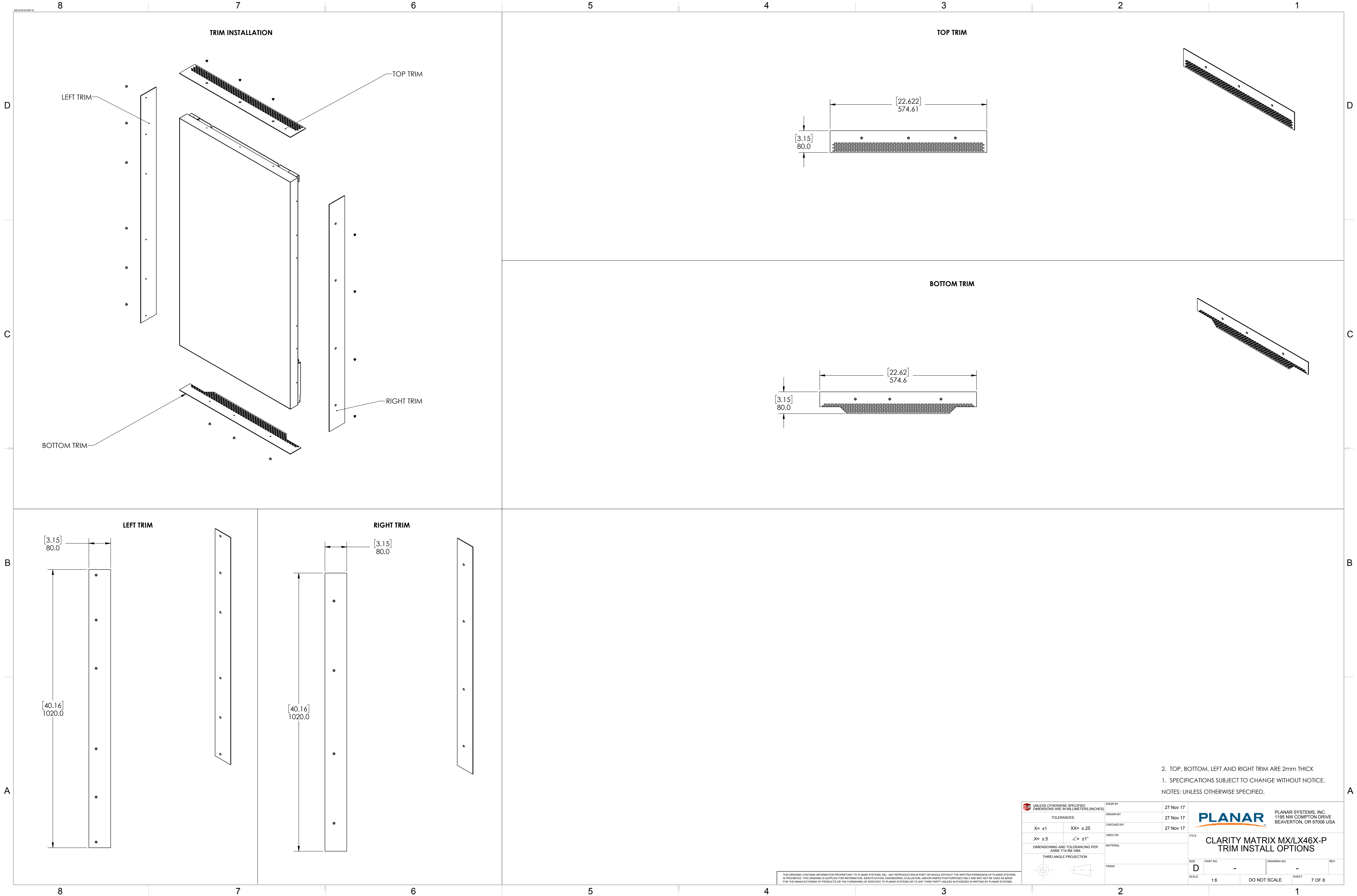
UNLESS OTHERWISE SPECIFIED: DIMENSIONS ARE IN MILLIMETERS (INCHES)		ENGR BY	27 Nov 17	PLANAR PLANAR SYSTEMS, INC. 1195 NW COMPTON DRIVE BEAVERTON, OR 97006 USA	
TOLERANCES:		DRAWN BY	27 Nov 17		
X= ±1	XX= ±.25	CHECKED BY	27 Nov 17	TITLE CLARITY MATRIX MX/LX46U-P 3x3 MOUNT BRACKET LAYOUT	
.X= ±.5	∠= ±1°	USED ON			
DIMENSIONING AND TOLERANCING PER ASME Y14.5M-1994		MATERIAL		SIZE	PART NO.
THIRD ANGLE PROJECTION		FINISH		DRAWING NO.	REV
THIS DRAWING CONTAINS INFORMATION PROPRIETARY TO PLANAR SYSTEMS, INC. ANY REPRODUCTION IN PART OR WHOLE WITHOUT THE WRITTEN PERMISSION OF PLANAR SYSTEMS IS PROHIBITED. THIS DRAWING IS SUPPLIED FOR INFORMATION, IDENTIFICATION, ENGINEERING, EVALUATION, AND/OR INSPECTION PURPOSES ONLY AND MAY NOT BE USED AS BASIS FOR THE MANUFACTURING OF PRODUCTS OR THE FURNISHING OF SERVICES TO PLANAR SYSTEMS OR TO ANY THIRD PARTY UNLESS AUTHORIZED IN WRITING BY PLANAR SYSTEMS.		SCALE		1:8	DO NOT SCALE
		SHEET		5 OF 8	



1. SPECIFICATIONS SUBJECT TO CHANGE WITHOUT NOTICE.
2. ADDITIONAL CUSTOM ACCESSORIES. CONTACT PLANAR SYSTEMS
 - CASTERS
 - FLOOR ANCHORING WITHOUT FEET
 - CUSTOM LENGTHS
3. STANDARD MAXIMUM TWO HEIGHT STACK. CONTACT PLANAR FOR CUSTOM OPTIONS FOR ADDITIONAL ROWS.
4. TIE BACKS REQUIRED FOR WALLS EXCEEDING 7 FEET TALL AT THE TOP AND MINIMUM EVERY 7 FEET BEYOND.

NOTES: UNLESS OTHERWISE SPECIFIED.

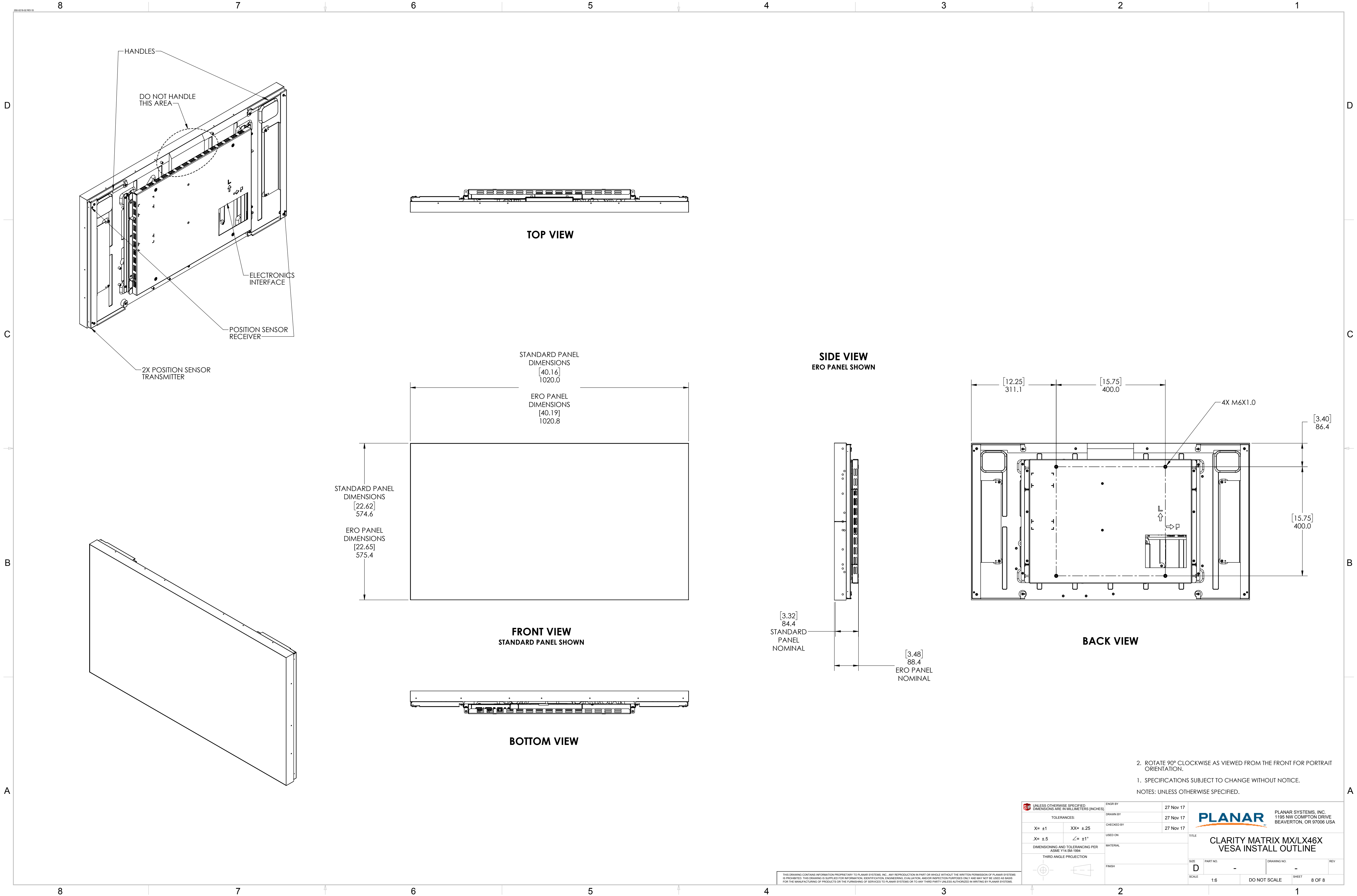
UNLESS OTHERWISE SPECIFIED DIMENSIONS ARE IN MILLIMETERS (INCHES)		ENGR BY	27 Nov 17	 <div>PLANAR SYSTEMS, INC. 1195 NW COMPTON DRIVE BEAVERTON, OR 97006 USA</div>	
TOLERANCES:		DRAWN BY	27 Nov 17		
X= ±1	XX= ±.25	CHECKED BY	27 Nov 17		
X= ±.5	∠= ±1°	USED ON	27 Nov 17		
DIMENSIONING AND TOLERANCING PER ASME Y14.5M-1994		MATERIAL	TITLE		
THIRD ANGLE PROJECTION		FINISH	CLARITY MATRIX MX/LX46X-P COLUMN STAND		
		SIZE			REV
		D			-
		SCALE			1:6
		DO NOT SCALE			SHEET 6 OF 8



2. TOP, BOTTOM, LEFT AND RIGHT TRIM ARE 2mm THICK
1. SPECIFICATIONS SUBJECT TO CHANGE WITHOUT NOTICE.
NOTES: UNLESS OTHERWISE SPECIFIED.

UNLESS OTHERWISE SPECIFIED DIMENSIONS ARE IN MILLIMETERS (INCHES)		ENGR BY	27 Nov 17	PLANAR PLANAR SYSTEMS, INC. 1195 NW COMPTON DRIVE BEAVERTON, OR 97006 USA	
		DRAWN BY	27 Nov 17		
TOLERANCES:		CHECKED BY	27 Nov 17	TITLE CLARITY MATRIX MX/LX46X-P TRIM INSTALL OPTIONS	
X= ±1	XX= ±.25	USED ON			
.X= ±.5	∠= ±1°	MATERIAL		SIZE D	PART NO. -
DIMENSIONING AND TOLERANCING PER ASME Y14.5M-1994		FINISH		DRAWING NO. -	REV
THIRD ANGLE PROJECTION				SCALE 1:6	SHEET 7 OF 8
				DO NOT SCALE	

THIS DRAWING CONTAINS INFORMATION PROPRIETARY TO PLANAR SYSTEMS, INC. ANY REPRODUCTION IN PART OR WHOLE WITHOUT THE WRITTEN PERMISSION OF PLANAR SYSTEMS IS PROHIBITED. THIS DRAWING IS SUPPLIED FOR INFORMATION, IDENTIFICATION, ENGINEERING, EVALUATION, AND/OR INSPECTION PURPOSES ONLY AND MAY NOT BE USED AS BASIS FOR THE MANUFACTURING OF PRODUCTS OR THE FURNISHING OF SERVICES TO PLANAR SYSTEMS OR TO ANY THIRD PARTY UNLESS AUTHORIZED IN WRITING BY PLANAR SYSTEMS.



D

C

B

A

D

C

B

A

TOP VIEW

STANDARD PANEL
DIMENSIONS
[40.16]
1020.0

ERO PANEL
DIMENSIONS
[40.19]
1020.8

FRONT VIEW
STANDARD PANEL SHOWN

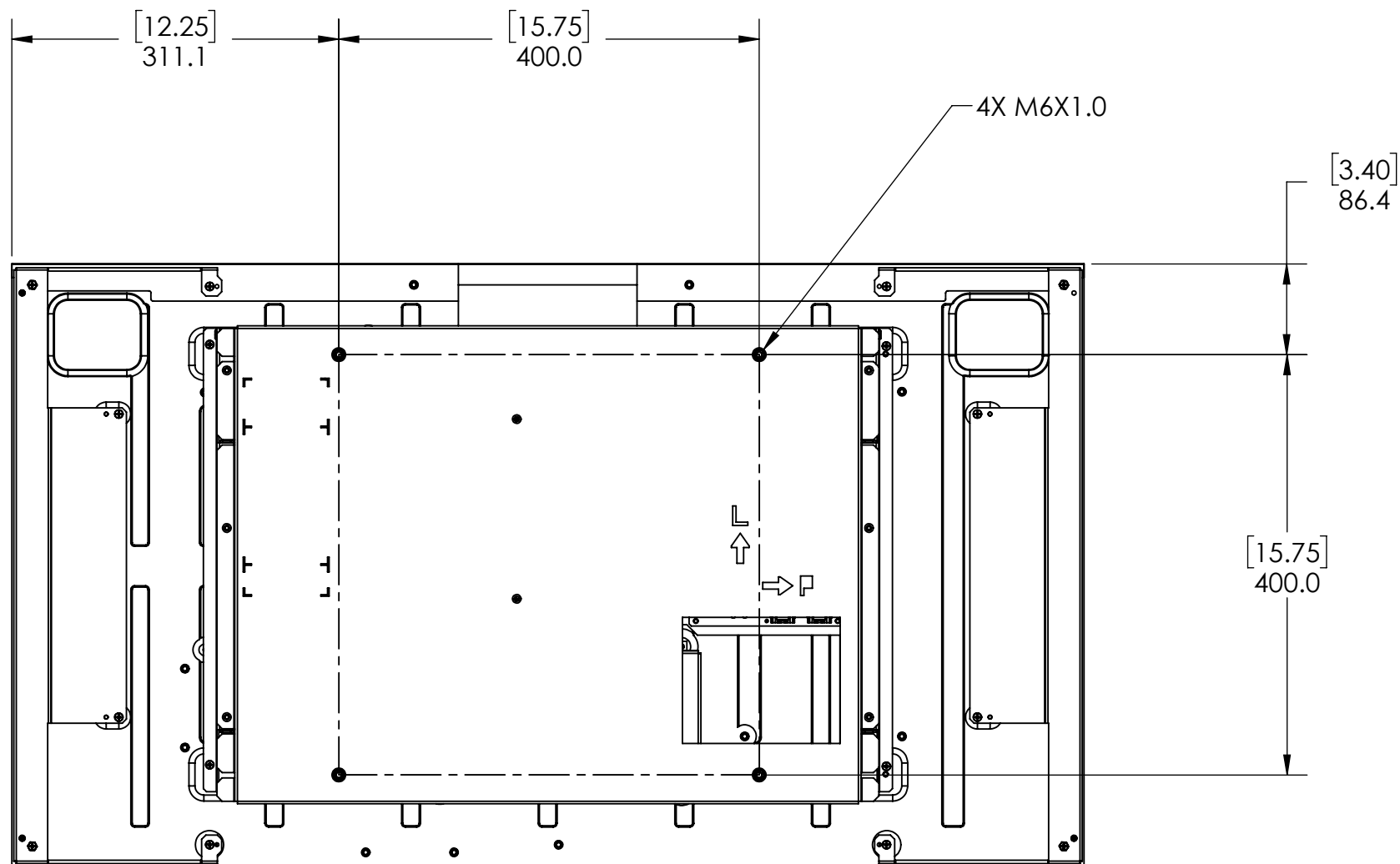
BOTTOM VIEW

SIDE VIEW
ERO PANEL SHOWN

[3.32]
84.4
STANDARD
PANEL
NOMINAL

[3.48]
88.4
ERO PANEL
NOMINAL

BACK VIEW



2. ROTATE 90° CLOCKWISE AS VIEWED FROM THE FRONT FOR PORTRAIT ORIENTATION.
1. SPECIFICATIONS SUBJECT TO CHANGE WITHOUT NOTICE.
NOTES: UNLESS OTHERWISE SPECIFIED.

UNLESS OTHERWISE SPECIFIED, DIMENSIONS ARE IN MILLIMETERS (INCHES)		ENGR BY	27 Nov 17	PLANAR PLANAR SYSTEMS, INC. 1195 NW COMPTON DRIVE BEAVERTON, OR 97006 USA	
TOLERANCES:		DRAWN BY	27 Nov 17		
X= ±1	XX= ±.25	CHECKED BY	27 Nov 17	TITLE CLARITY MATRIX MX/LX46X VESA INSTALL OUTLINE	
.X= ±.5	∠= ±1°	USED ON			
DIMENSIONING AND TOLERANCING PER ASME Y14.5M-1994		MATERIAL		SIZE	PART NO.
THIRD ANGLE PROJECTION		FINISH		D	-
				SCALE	1:6
				DO NOT SCALE	SHEET 8 OF 8

THIS DRAWING CONTAINS INFORMATION PROPRIETARY TO PLANAR SYSTEMS, INC. ANY REPRODUCTION IN PART OR WHOLE WITHOUT THE WRITTEN PERMISSION OF PLANAR SYSTEMS IS PROHIBITED. THIS DRAWING IS SUPPLIED FOR INFORMATION, IDENTIFICATION, ENGINEERING, EVALUATION, AND/OR INSPECTION PURPOSES ONLY AND MAY NOT BE USED AS BASIS FOR THE MANUFACTURING OF PRODUCTS OR THE FURNISHING OF SERVICES TO PLANAR SYSTEMS OR TO ANY THIRD PARTY UNLESS AUTHORIZED IN WRITING BY PLANAR SYSTEMS.