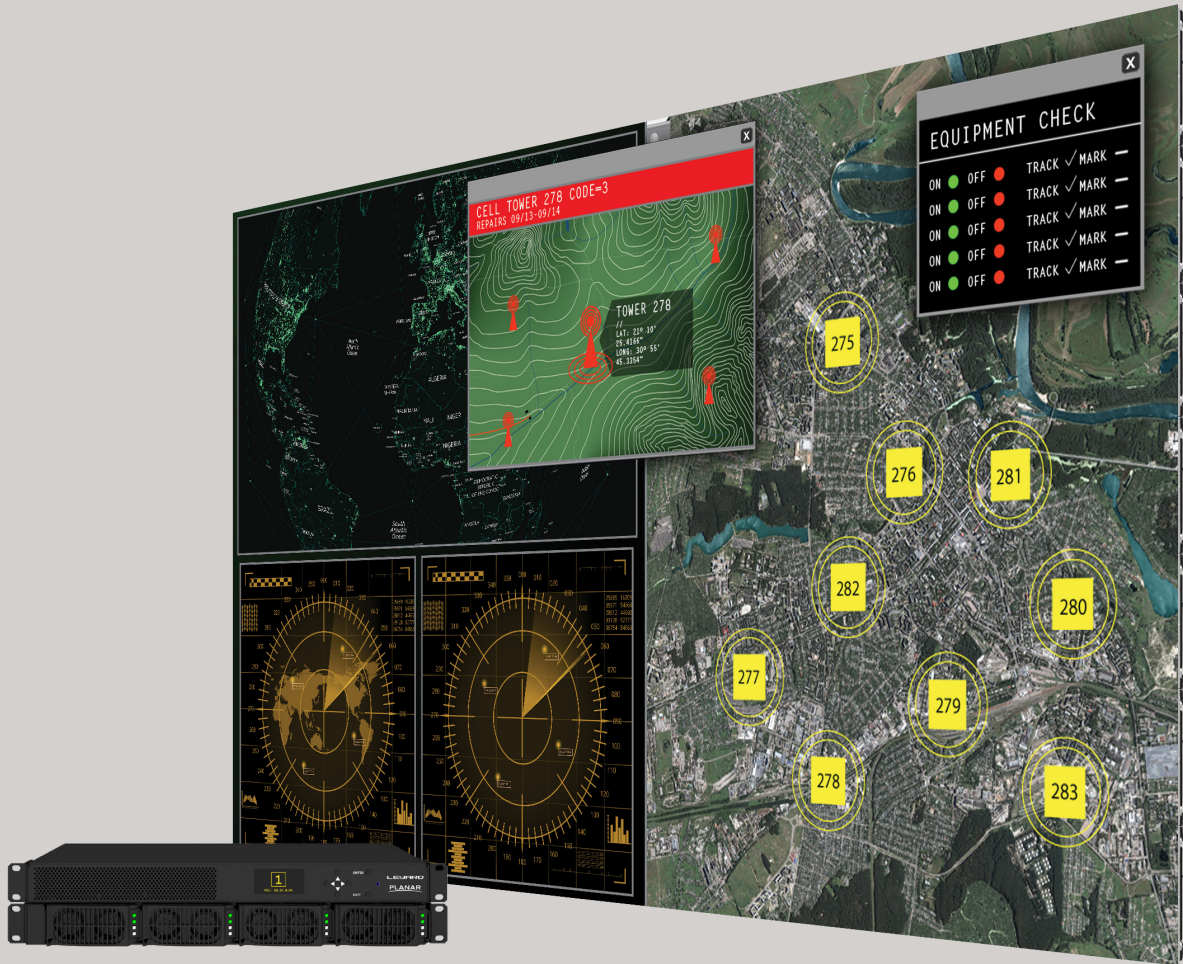




Leyard DirectLight X LED Video Wall System



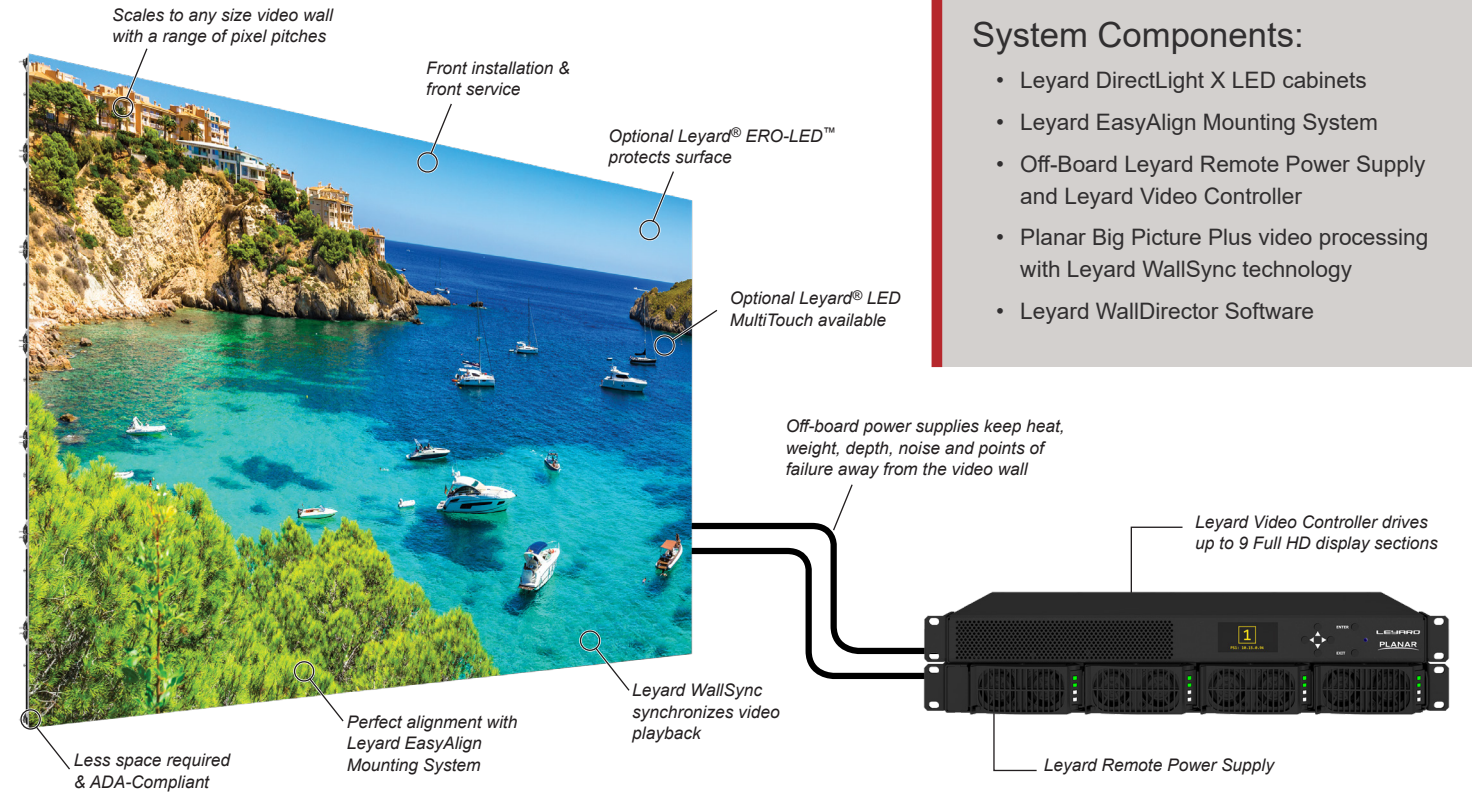
Next-Generation LED Video Wall Solution

The next-generation Leyard® DirectLight® X LED Video Wall System expands the award-winning Leyard® DirectLight® LED Video Wall System platform to deliver the ultimate complete LED video wall solution. With the off-board Leyard® Video Controller, Leyard DirectLight X becomes the industry's first LED video wall solution to embed advanced video processing directly into the product.

Leyard DirectLight X delivers a complete solution with an off-board video controller, off-board hot-swap power supplies, industry-leading wall mount, fine pixel pitch cabinets with full front service access, as well as modern, web-based control and management software.

Unique Architecture for a True All-In-One Solution

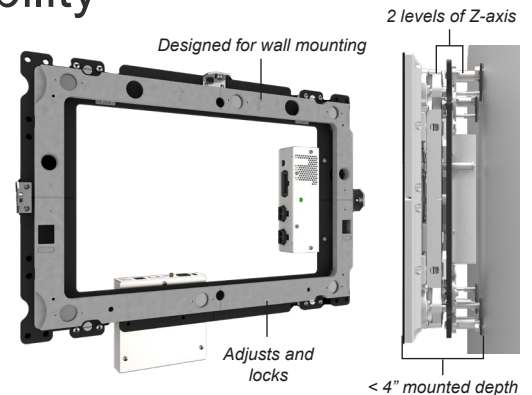
Engineered by LED video wall experts, Leyard DirectLight X's next-generation design addresses the challenges and unique benefits of fine pitch LED. The architecture addresses mounting, alignment, reliability, fault-tolerance, fast service, power efficiency, scalability and long life, resulting in superior visual performance and value to the customer.



Precision Alignment and Front Serviceability

The Leyard® EasyAlign™ Mounting System simplifies installation, alignment and servicing of Leyard DirectLight X LED video walls and features:

- An exceedingly thin <4" (<100mm) profile depth
- Perfect adjustment with six-axis alignment features
- Front service accessibility to all video wall system components
- Positive locking features for LED cabinet stability
- Flexible install options, including forward tilt (up to 10°), 90° corner installations and faceted curved video walls

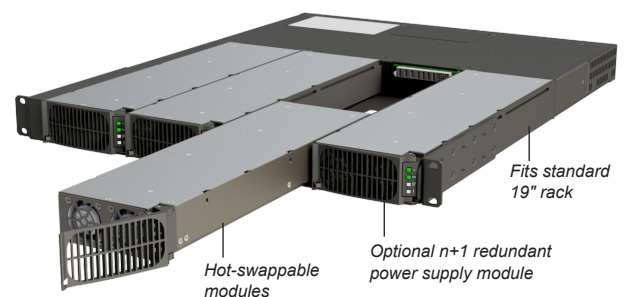


Mission Critical Design

The Leyard® Remote Power Supply delivers mission-critical reliability with:

- 24x7 operation
- Hot-swappable Remote Power Supply Modules
- Low power standby mode
- Redundant AC input circuitry
- Reduced thermal stress, health and status monitoring capabilities
- Optional n+1 redundant power supply module

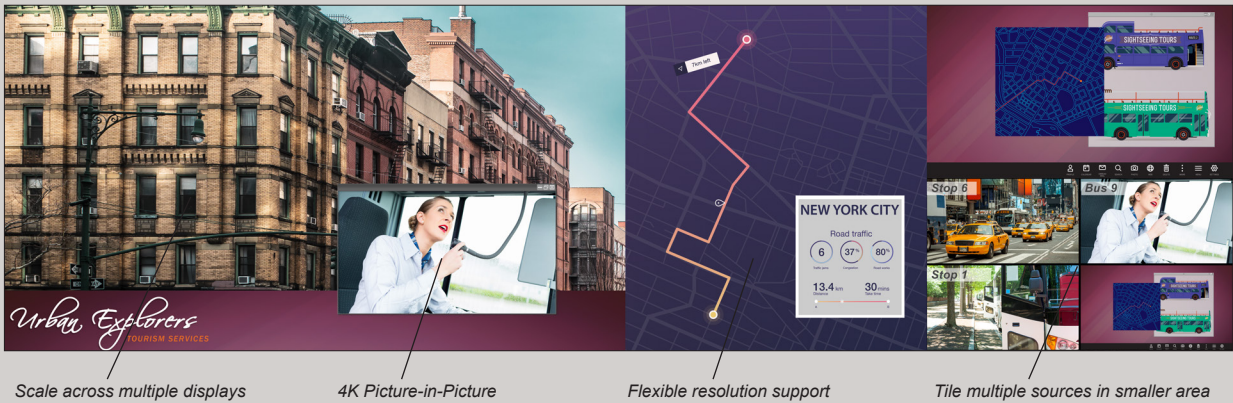
For government and military customers delivering highly sensitive information, Leyard DirectLight X offers a Fiber Video Extension option—a more secure and longer distance option for extending the video signal.



Advanced Video Wall Processing

Leyard DirectLight X delivers extensive and flexible video wall processing options to display sources on the video wall. With Planar® Big Picture Plus™ Video Wall Processing, users can scale sources across the entire video wall or any section of the video wall and use high resolution content, up to 4K, to be spread over multiple sections at native resolution

Solving a range of video wall genlock and synchronization challenges, Leyard DirectLight X includes Leyard® WallSync™ genlock technology. Leyard WallSync uses Smart Genlock to automatically ensure perfectly synchronized video playback without manual configuration.

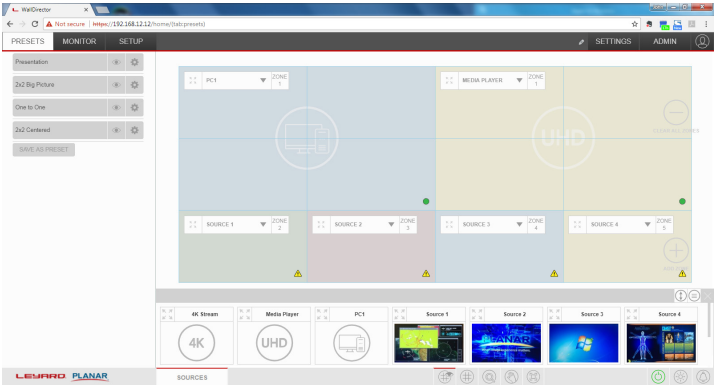


Leyard WallDirector Software

Leyard DirectLight X features Leyard® WallDirector™ Software, an intuitive and powerful software tool to simplify video wall installation, configuration and operation.

The Leyard WallDirector Software allows users to:

- Set-up & configure a video wall
- Capture the health status of video wall components in a centralized, convenient location
- Recall windowing layouts via simple, one-button presets
- Drag & drop sources on the video wall canvas
- Easily manipulate the window size & position



Ultra-High Resolution

Leyard DirectLight X LED cabinets deliver a 16:9 aspect ratio and precise pixel pitch values that ensure every model achieves exact Full HD, 4K or 8K resolutions.



Video Wall Resolution												
Models	1 x 1	2 x 2	3 x 3	4 x 4	5 x 5	6 x 6	7 x 7	8 x 8	9 x 9	10 x 10	11 x 11	12 x 12
DLX-0.7	768 × 432	1536 × 864	2304 × 1296	3072 × 1728	3840 × 2160	4608 × 2592	5376 × 3024	6144 × 3456	6912 × 3888	7680 × 4320	8448 × 4752	9216 × 5184
DLX-0.9	640 × 360	1280 × 720	1920 × 1080	2560 × 1440	3200 × 1800	3840 × 2160	4480 × 2520	5120 × 2880	5760 × 3240	6400 × 3600	7040 × 3960	7680 × 4320
DLX-1.2	480 × 270	960 × 540	1440 × 810	1920 × 1080	2400 × 1350	2880 × 1620	3360 × 1890	3840 × 2160	4320 × 2430	4800 × 2700	5280 × 2970	5760 × 3240
DLX-1.5	384 × 216	768 × 432	1152 × 648	1536 × 864	1920 × 1080	2304 × 1296	2688 × 1512	3072 × 1728	3456 × 1944	3840 × 2160	4224 × 2376	4608 × 2592
DLX-1.8	320 × 180	640 × 360	960 × 540	1280 × 720	1600 × 900	1920 × 1080	2240 × 1260	2560 × 1440	2880 × 1620	3200 × 1800	3520 × 1980	3840 × 2160
Video Wall Size (WxH)												
Feet (ft)	2.0×1.1	3.9×2.2	5.9×3.3	7.9×4.4	9.8×5.5	11.8×6.6	13.8×7.7	15.7×8.9	17.7×10	19.7×11.1	21.6×12.2	23.6×13.3
Meters (m)	0.6×0.34	1.2×0.67	1.8×1.0	2.4×1.3	3×1.6	3.6×2.0	4.2×2.3	4.8×2.7	5.4×3.0	6×3.3	6.6×3.7	7.2×4.0
Area (sqm)	0.20	0.81	1.82	3.24	5.06	7.29	9.92	12.96	16.40	20.25	24.50	29.16
Diagonal	27"	54"	81"	108"	136"	163"	190"	217"	244"	271"	298"	325in

LEYARD DIRECTLIGHT X LED VIDEO WALL SYSTEM SPECIFICATIONS					
Model	DLX-0.7	DLX-0.9	DLX-1.2	DLX-1.5	DLX-1.8
Pixel Pitch	0.781mm	0.9375mm	1.25mm	1.5625mm	1.875mm
Display Resolution	768 x 432	640 x 360	480 x 270	384 x 216	320 x 180
Pixel Density <i>(pixels)</i>	1,638,400/sq m 152,212/sq ft	1,137,777/sq m 105,703/sq ft	640,000/sq m 59,458/sq ft	409,600/sq m 38,053/sq ft	284,444/sq m 26,426/sq ft
Brightness Max <i>(cd/sq. m)</i>	>400	>800			
LED surround	Black Solder Mask			Leyard® MicroGrid Shader™	
Color Gamut	100% NTSC				
Contrast Ratio	>6000:1				
LED Refresh Rate	1920Hz	1920Hz	3000Hz	3000Hz	3000Hz
Color Temperature, Adjustable <i>(K)</i>	3200 - 9300				
Viewing Angles	160°, Horizontal 140° Vertical				
Display Size <i>(W x H x D)</i>	600 x 337.5 x 95mm 23.62 x 13.28 x 3.74in				
Mounted Depth	< 4", ADA-Compliant				
Display Weight <i>(kg/display)</i>	6.6kg 14.5lb				
Mount Weight per Display <i>(kg/display)</i>	3.2kg 7lb				
Power Consumption, Max <i>(watts)</i>	150/Display 741/sq m				
Acoustic Noise	Fanless Operation				
Operating Temperature <i>(°F/C)</i> 10-80% <i>relative humidity, non-condensing</i>	-10° to 40° C -14° to 104° F				
Wall Mount	Leyard EasyAlign Mounting System with 6-axis adjustment				
Installation and Service Access	Front				
Installation Options	Corner Installation: 90° corner, 15mm seam Forward Tilt: up to 10° Concave Curve: up to 30° facets				
Regulatory Compliance	NRTL UL 60950-1, FCC Class A, CE EN60950-1, EN 55032 Class A and EN55024, WEEE, CISPR 32/2015				

LEYARD REMOTE POWER SUPPLY		
Model	RPS110	RPS220
Type	1RU rack mount; 19" rack	1.5RU rack mount; 19" rack
Line Voltage	100-240 Volts AC autoranging	200-240 Volts AC autoranging
Power Output	1200W per output	
Power Supply Configurations	1, 2 or 3 outputs	2, 4 or 6 outputs
Redundancy	n + 1 redundant option	
Hot Swap	Supported for each power supply module	
Low Power Standby Mode	<3W in standby mode	
Power Status	Diagnostic LEDs per power supply module	
Maximum Distance from Video Wall	200ft (61m) standard, 500ft (152.4m) maximum	

VIDEO CONTROLLER	
Type	1U rack mount controller drives up to 9 Full HD (1920x1080) sections
Video Inputs	4x HDMI 2.0 (w/ HDCP 2.2); 1x DisplayPort 1.2
Video Outputs	9-Output Controller: 9x RJ45 8P8C, 1x DisplayPort 1.2 4-Output Controller: 4x RJ45 8P8C, 1x DisplayPort 1.2
Image Scaling	Planar Big Picture Plus Processing, Leyard WallSync, PiP, 4K at 60Hz upscaling and downscaling
Control	IR Remote Control, RS-232, USB, Network, Leyard WallDirector Software
Controller Status	Diagnostic LEDs, health monitoring and alerts
Maximum Distance from Wall	200ft (60m)

FIBER VIDEO EXTENSION MODULE OPTION	
Type	1U rack mount module drives up to 4 Full HD (1920x1080) sections
Fiber Optic Connection Type	SFP multi-mode transceivers supports distances up to 1000ft (300m) from video wall. Compatible with single-mode transceivers supporting up to 10k from the wall. (Single-mode transceivers not provided)
USB Extension	USB-B at module; USB-A at panel
IR Remote Extension	Embedded
Power	AC Power Adapter; 100-240V AC ± 10%, 47 to 63 Hz; 50W