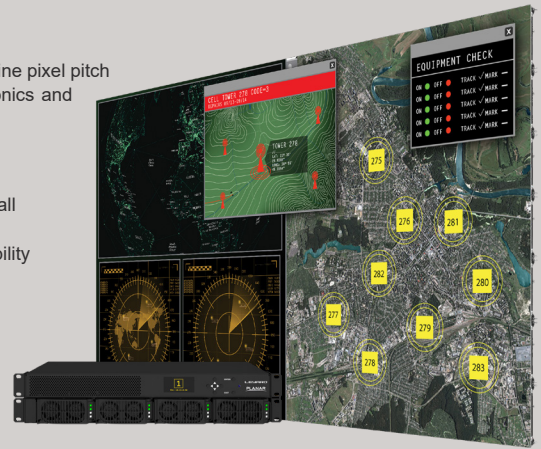


**LED VIDEO WALL SOLUTIONS**

**Leyard DirectLight X LED Video Wall System**

The next-generation Leyard® DirectLight® X LED Video Wall System is a family of seamless, ultra-fine pixel pitch LED video wall displays with built-in advanced video wall processing, integrated off-board electronics and power supply.

- Next-generation LED video wall system with built-in processing
- Available in 0.7, 0.9, 1.2, 1.5 and 1.8mm pixel pitches
- Features Leyard® WallDirector™ Software for simplified installation, monitoring and video wall management
- Delivers <4" profile install depth with precise alignment, front installation and front serviceability
- Supports 4K at up to 60Hz and scaling
- Mission-critical design for 24x7 reliability
- 16:9 aspect ratio for Full HD, 4K and 8K resolutions
- Select models available with Leyard® ERO-LED™ protective technology
- Select models available interactive multi-touch models



**Leyard TWS Series**

The Leyard® TWS Series is a line of fine pitch LED video wall displays. With a 27" cabinet, the Leyard TWS Series features easy handling and installation, easily produces curved video walls, and offers redundant power and video options.



- Available in 0.9, 1.2, 1.5 and 1.8mm pixel pitches
- Supports the closest viewing distances with outstanding image quality
- Advanced design for reliability and ease of installation
- Mission-critical design with redundant power options
- Lightweight, magnesium alloy 27" cabinet
- 16:9 aspect ratio for Full HD, 4K and 8K resolutions
- Select models available with Leyard ERO-LED protective technology
- Select models available interactive multi-touch models

**Leyard TWA Series**

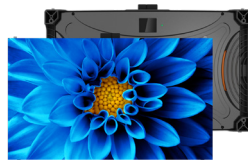
The Leyard® TWA Series is a line of fine pitch LED video wall displays. With a slim 54" cabinet, Leyard TWA Series delivers easy installation and service, and outstanding flatness to rival LCD and rear projection.



- Available in 0.9, 1.2 and 1.8mm pixel pitches
- Supports the closest viewing distances with outstanding image quality
- Delivers benefits from unique 54" flat panel design
- Advanced design for reliability and ease of installation
- Delivers power efficiency
- 16:9 aspect ratio for Full HD, 4K and 8K resolutions
- Select models available with Leyard ERO-LED protective technology
- Select models available interactive multi-touch models

**Leyard TVF Series**

The Leyard® TVF Series is a family of fine pitch LED video wall displays, featuring a stackable design, eliminates cabinet-to-cabinet cabling and reduces complexity of installation and vertical alignment.



- Available in 1.5, 1.8 and 2.5mm pixel pitches
- Stackable design with zero cabinet-to-cabinet cabling
- Lightweight 27" cabinet with slim cabinet profile under 3 inches
- Front installation and serviceability
- 16:9 aspect ratio for Full HD, 4K and 8K resolutions

**Leyard TVH Series**

The Leyard® TVH Series is a line of fine pitch LED video wall displays with industry-leading image quality in an advanced design. With a 19.5" cabinet, Leyard TVH Series is perfect for a wide range of applications and environments.



- Available in 1.6mm pixel pitch
- Supports close viewing distances with excellent black levels and image control
- Supports curved video walls and build-to-fit spaces
- Optional redundant video and dual power
- Fanless, whisper-quiet operation for low-noise environments

**Leyard LED MultiTouch**

Leyard® LED MultiTouch is the industry's first completely seamless interactive LED video wall, featuring a 32-point simultaneous interactive surface for a dynamic multi-user experience.



- Features Leyard® PLTS™ technology, a specialized protective material that creates a smooth, durable and lightweight LED touch surface
- Enhanced visual performance with uniform color and brightness
- Anti-glare surface with no parallax effect
- Up to 32-point simultaneous touch capability
- Available in 108", 151" and 196" diagonal LED video walls
- Available in 0.7, 0.9 and 1.2mm pixel pitches

**Leyard ERO-LED**

Leyard ERO-LED is a surface coating that provides ruggedness and protection for Leyard fine pitch LED video wall displays. With Leyard ERO-LED, new applications are unlocked for fine pitch LED displays.



- Proprietary coating applied to protect Leyard fine pitch LED video walls
- Improves visual performance
- Easy to install service, clean and maintain
- Enhances best-in-class Leyard LED video wall solutions at a reasonable cost
- Available in 0.9, 1.2, 1.5 and 1.8mm pixel pitches

## RENTAL & STAGING LED VIDEO WALL SOLUTIONS

### Leyard VVR Series

The Leyard® VVR Series is a family of indoor and outdoor LED video wall displays designed to meet the fast-paced needs of rental & staging, large venues and events applications.



- Indoor models available in 2.5, 3.9, 4.8 and 5.9mm pixel pitches
- Outdoor models available in 2.9, 3.9, 4.8, 5.9, 7.8 and 10.4mm pixel pitches
- Magnetically attachable cabinets with quick lock system to support fast, single-person handling
- Self-supporting design enables hanging, stacking and wall-mounted installations
- Rear and front service models available

### Leyard VersaLight Series

The Leyard® VersaLight™ Series is a versatile line of indoor and outdoor LED video wall displays designed for digital signage to turn the most challenging environments into dramatic, inspirational video walls.



- Indoor models available in 2.5, 4 and 6mm pixel pitches
- Outdoor models available in 4, 6 and 8mm pixel pitches
- Front-access installation and service available
- Configurable for both large spaces and tighter, built-in spaces
- Flexible mounting options deliver wide range of mounting options

## Leyard CarbonLight LED Displays

Leyard® CarbonLight™ LED Displays are a comprehensive line of LED display solutions designed specifically for rental, staging and fixed-flexible installations. With a broad range of models, Leyard CarbonLight LED displays deliver a wide range of unique LED display solutions for eye-catching, creative public venue installations.

**NEW**

### Leyard CarbonLight Rental & Staging Accessories

Leyard® CarbonLight™ Series LED displays offers accessories to enhance and complete modular LED video wall systems for rental and staging applications.

#### Surface Protection with Leyard ERO-LED -

Rugged surface protection technology integrated with Leyard CarbonLight LED Cabinets to prevent pixel damage caused by impact and rough handling during set-up, teardown and transport

#### Rental Cabinet Frames -

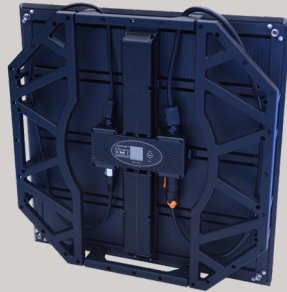
Easier handling, allowing quick installation and added structural rigidity for large video walls

#### Modular Ground Support -

Modular floor stand for easy set-up and teardown of standing or hanging configurations

#### Side-Access Flight Cases -

Side-access, 12-cabinet Flight Cases that save time during loading and unloading, as well as saves space and weight during shipping



### Leyard® CarbonLight™ CLI Series Indoor LED Video Wall

- Available in 1.9, 2.6, 3.9 and 5.2mm pixel pitches
- Display size: 500 x 500 x 53mm
- Front serviceability
- Ideal for indoor applications
- Lightweight carbon fiber construction with 45° display edges for 90° corners
- Designed for hanging or free-standing installs
- Compatible with Leyard ERO-LED protective surface technology, rental frames and flight case accessories



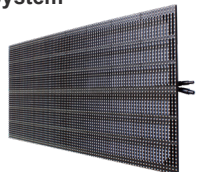
### Leyard® CarbonLight™ CLO Series Outdoor LED Video Wall

- Available in 3.9, 5.2 and 7.8mm pixel pitches
- Display size: 500 x 500 x 55mm
- Ideal for outdoor applications
- Lightweight carbon fiber construction with 45° display edges for 90° corners
- IP65 Protection rating for outdoor applications
- Compatible with Leyard ERO-LED protective surface technology, rental frames and flight case accessories



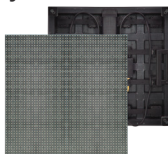
### Leyard® CarbonLight™ CLM Series Mesh LED System

- Available in 6.9, 10.4 and 15.6mm pixel pitches
- Display size: 1000 x 500 x 45mm
- See-through mesh design
- Lightweight carbon fiber construction
- 45° display edges for 90° corners
- IP65 Protection rating for outdoor applications
- Compatible with rental frame accessories



### Leyard® CarbonLight™ CLF Series LED Flooring System

- Available in 5.2 and 10.4mm pixel pitches
- Display size: 500 x 500 x 82mm
- Loads up to 500 kg per display
- High-strength, wear-proof mask
- IP65 Protection rating (10.4mm pitch)



### Leyard® CarbonLight™ CLA Series Indoor LED Video Wall

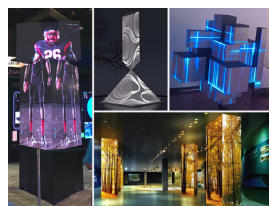
- Available in 1.5 and 1.9mm pixel pitches
- Display size: 250 x 250 x 58mm
- Lightweight carbon fiber construction
- Leyard® PrecisionArc™ alignment technology for seamless curved shapes
- Compatible for hanging or free-standing installs



## CUSTOM LED VIDEO WALL SOLUTIONS

### Leyard® Creative LED Solutions

- Bring excitement with creative LED products and design services
- Unlimited size and shapes
- Broad range pitches and formats
- Solutions for indoor and outdoor
- Fixed and temporary installations
- Unique visions brought to life



## LCD VIDEO WALL SOLUTIONS

UPDATED

### Clarity Matrix G3 LCD Video Wall System

The next-generation Clarity® Matrix® G3 LCD Video Wall System advances every aspect of the unique Clarity Matrix architecture, building on the accomplishments of the award-winning Clarity Matrix to deliver the ultimate LCD video wall solution.

- Next-generation LCD video wall system with built-in video wall processing
- 46" and 55" extreme narrow bezel LCD video wall with 1.7mm tiled bezel width
- Features Leyard WallDirector Software for simplified installation, monitoring and management
- Delivers beyond 8K resolution with a single 1U controller
- Supports 4K at up to 60Hz and scaling
- Integrated Leyard WallSync technology eliminates video tearing and delivers genlock synchronization
- Mission-critical design for 24x7 reliability
- Precise alignment and industry's thinnest profile install depth of 3.6" with Planar® EasyAxis™ Mounting System
- Available with Planar® ERO-LCD™ protective glass, fiber video extension, passive 3D and interactive multi-touch models



### Planar VM Series LCD Video Wall

The Planar® VM Series is a line of narrow bezel LCD displays that provides a simplified LCD video wall solution for demanding requirements of mission-critical applications and high ambient light environments.

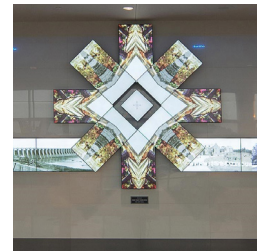
- Extreme narrow bezel LCD video wall display with tiled bezel width as small as 1.8mm
- Available in 55"
- High brightness up to 700 nits
- 4K at 60Hz connectivity with loop through and built-in video wall scaling up to a 10x10 array
- Designed for 24x7 operation
- Supports landscape and portrait orientation



### Planar Mosaic Architectural Video Wall

Planar® Mosaic® is the only video wall solution that allows designers to mix-and-match three different LCD displays tile sizes and shapes forming unique arrays that are not possible in traditional LCD video walls.

- Available in unique sizes:
  - Planar® Salvador™ – 22" square tile
  - Planar® Pablo™ – 46" rectangle tile
  - Planar® Vincent™ – 55" rectangle tile
- Mount tiles at any angle or in any position and easily scale one image or video
- Includes off-board power supply modules, mounting system and design software
- Mosaic® Ensemble™ package for all-in-one solution



## REAR PROJECTION VIDEO WALL SOLUTIONS

NEW

### eyevis™ 3004 Series

- Available in Full HD and SXGA+ resolutions
- Available in 70" or 80"
- No-compromise image quality
- High brightness projection engine up to 3000 Ansi-Lumens using proven LED illumination
- Automatic color tracking system with data logging for preventive maintenance
- Optional Input Box



### eyevis™ 2004 Series

- Available in SXGA+, Full HD, WUXGA and WQXGA resolutions
- Available in 50", 56", 60", 70" or 80"
- No-compromise image quality
- Automatic color tracking system with data logging for preventive maintenance
- Optional Input Box



### eyevis™ SLIM Series

- Slimmest profile rear projection video wall display (432mm)
- Full HD resolution
- Available in 50", 60" or 70"
- 120Hz display for active stereo 3D applications
- Two screen choices for viewing angles and brightness
- Full front or rear installation
- Motorized geometry adjustment of the projection unit
- Automatic color tracking system with data logging for preventive maintenance



### eyevis™ TRP Series

- Full HD resolution
- Available in 50" or 60"
- Two screen choices for viewing angles and brightness
- No-compromise image quality
- Designed for simplified installation
- Low power consumption
- Optional Input Box



## PROCESSING & PLAYERS

### Clarity VCS Video Wall Processor

Clarity® VCS™ is a flexible and easy-to-use video wall processor designed to capture, display and manage multiple sources on Leyard and Planar video walls.



- HDMI and DVI capture with HDCP 1.4 support for 4K and Full HD sources
- Drive video walls of up to 32 high resolution displays
- Simplified installation process and multi-video wall support on all versions
- Includes Windows® 10–LTSB-based VCS Control Software and reliable SSD drives for Standard or Enterprise Editions

### Planar ContentSmart Media Player

The Planar® ContentSmart™ Media Player is a digital signage media player platform featuring Full HD 1080p and 4K resolution models and ContentSmart™ Software for easy-to-design and deploy digital signage.



- Available in Full HD or 4K resolution
- 4K player also available in OPS format
- Comes standard with ContentSmart Software
- Also embedded seamlessly into Planar QE Series displays

## LARGE FORMAT LCD DISPLAY PRODUCTS

### Planar® UltraRes™ Series

- 75", 86" and 98" 4K LCD displays
- Exceptional image and color accuracy
- 4K at 60Hz support with DisplayPort 1.2 and HDMI 2.0
- Next-generation 4K compatibility with HDCP 2.2
- Ultra-slim Planar® Profile™ Mounting System
- Expansion slot for OPS
- Optional Planar ERO-LCD and multi-touch technology
- Planar® TouchMark™ annotation and white boarding software license included with touch models
- Designed for 24x7 operation



### Planar® QE Series

- 75", 86" and 98" 4K LCD displays
- Exceptional image quality and color accuracy
- 4K at 60Hz support with DisplayPort 1.2 and HDMI 2.0
- Next-generation 4K compatibility with HDCP 2.2
- Embedded Planar ContentSmart 4K media player and software
- Optional multi-touch technology with Planar ERO-LCD
- Planar TouchMark annotation and white boarding software license included with touch models
- Designed for 24x7 operation



### Planar® EP Series

- 50", 58" and 65" 4K LCD displays
- Exceptional image quality
- 4K at 60Hz support with DisplayPort 1.2 and HDMI 2.0
- Next-generation 4K compatibility with HDCP 2.2
- Expansion slot for OPS
- Optional multi-touch technology
- Planar TouchMark annotation and white boarding software license included with touch models
- Designed for 24x7 operation



### Planar® EPX Series

- 100" 4K LCD displays
- Exceptional image quality with a wide color gamut
- High brightness of 700 nits
- 4K at 60Hz support with DisplayPort 1.2 & HDMI 2.0
- Next-generation 4K compatibility with HDCP 2.2
- Expansion slot for OPS
- Optional multi-touch technology
- Planar TouchMark annotation and white boarding software license included with touch models
- Designed for 24x7 operation



### Planar® Simplicity™ Series

- 43", 50", 55", 65", 75" and 86" 4K LCD displays
- 43" and 65" Full HD LCD displays
- Exceptional image quality
- 4K at 60Hz support with HDMI 2.0
- Next-generation 4K compatibility with HDCP 2.2
- Integrated signage tools, including USB playback with scheduling and LAN distribution
- Expansion slot for OPS (65" - 86" only)



## DESKTOP AND TOUCH MONITOR PRODUCTS

### Touch Screen Monitors

- **Planar® Helium™ Series:** 22" to 27" multi-touch monitors, built for the ultimate touch experience
- **Planar® PXL Series:** 22" to 24" dual touch monitors, built for the most demanding multimedia applications
- **Planar® PT Series:** 15" to 32" single and multi-touch monitors, built for demanding point-of-sale, point-of-purchase and public environments



### Desktop Monitors

- **Planar® PL Series:** 15" to 27" monitors, featuring a thin bezel design, crisp images and proven reliability
- **Planar® PX Series:** 22" to 32" monitors, built for the most demanding multimedia applications
- **Planar® IX Series:** 27" 5K monitor, built for applications requiring simultaneous, dual-source viewing of critical visual information



[www.leyard.com](http://www.leyard.com) | [www.planar.com](http://www.planar.com)

**North America**  
+1-866-475-2627  
sales@leyardgroup.com

**EMEA**  
+421 907-775-941  
sales.emea@leyardgroup.com

**APAC**  
+852 2326 0228  
info.asia@leyardgroup.com

**Japan**  
+81-3-6915-2768  
info.japan@leyardgroup.com

**Latin America**  
+55-41-3059-5100  
info.brazil@leyardgroup.com