

QUICK START GUIDE

Congratulations!

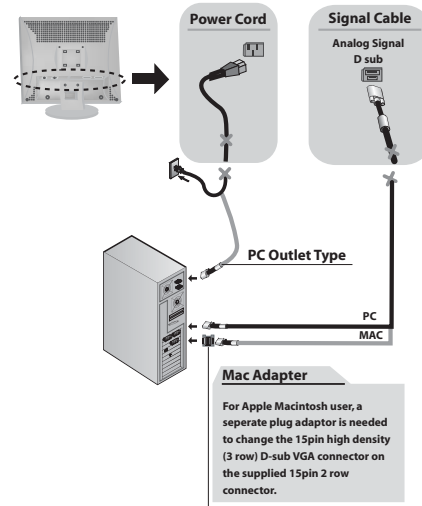
Thank you for choosing a Planar monitor! Your monitor comes complete with our Customer First™ 3-year, 2-day advanced air replacement warranty (see www.planar.com), so you can depend upon this high-quality Planar display for years to come!

This Quick Start Guide includes easy instructions you can follow to successfully install your new monitor. If you need additional assistance, we provide free technical support Monday through Friday, 8 am to 9 pm Eastern Time.

Customer Service
Online Support: www.planar.com/support
E-mail: desktopmonitors@planar.com
Tel: 1-866-PLANAR1 (1-866-752-6271), option 2

For the past 20 years, Planar (Nasdaq PLNR) has been a leading global OEM manufacturer of flat panel displays. You will find our displays in nearly every gas pump, automated teller machines, medical equipment, and ticketing touchscreen kiosks worldwide. We offer an award-winning line of LCD monitors, LCD-TVs, and plasma displays. For more information, see the enclosed Planar Connections CD-ROM or visit www.planar.com.

PLANAR



1 Set Up

Unfold the Monitor Base

Lay the monitor on a cushion or piece of soft cloth with its front side facing upward. Grasp the stand firmly with both hands as shown in the picture and unfold the base by swiveling it out. Significant force is required.

Connect Video and Power Cables

Attach the video cable (the blue connector) to the monitor. Then, plug the opposite end of the video cable into your video card (output) on your computer and tighten the screws. Attach the AC adapter cord to the back of the monitor and attach the power cord. Plug the power cord into an active wall outlet.

Power-Up Your Monitor and Computer

Turn on the power switch until the LED indicator on the front of the monitor lights up. If not, check all connections and ensure that your power outlet is active. You should see a "No Signal" message on the display. Turn on your computer. During boot up it is normal for the flat panel image to be fuzzy or slightly off-set. This monitor has been optimized as a Plug and Play monitor and no driver files are necessary.

3 Trouble Shooting Tips

If you are experience image fuzziness, flicker, or if you are not getting a signal on your monitor after following the Quick Start Guide, the following tips should help. If these symptoms persist, please contact Planar for additional assistance.

Smooth Fonts

If you see jagged edges in your on-screen text, click Start in the lower-left hand corner of your desktop, select Settings, select Control Panel, Select Display (or right-click on the desktop, select Properties). Go to the Effects tab. Select Smooth edges of screen fonts. Click Apply. Macintosh users should obtain a copy of Adobe Type Manager (ATM) to view smooth text, if your screen fonts appear jagged.

Check Video Cable Connections

Turn your monitor off. Disconnect the video cable and inspect it. If you find bent pins, contact Planar for a replacement. If all pins look straight, reconnect both ends and tighten until snug. Reboot your computer system.

2 Adjusting Your Monitor

Auto-Adjust

The monitor will automatically adjust to the incoming signal. If you find it necessary to adjust the image, press the function Select/Auto button on the front of the monitor to access the Auto-Adjust feature.

Adjusting Resolution and Color

You can use the Microsoft® Windows® Display Properties to adjust the settings of your monitor. Right click on the Windows desktop and select Properties from the menu. Select the Settings tab. Increase the resolution to the native resolution of your monitor. Select the maximum colors supported by your video card. If you are unsure, start low and increase until you reach the highest bit display.

Macintosh Users

Select Apple Menu > Control Panels > Monitors. Choose the maximum resolution for your monitor and refresh rate of 75 Hz. If the image is fuzzy or flickers, select a lower refresh rate. The maximum colors requires 4 or 8 MB of VRAM. Consult your computer and/or video card manual for more details.

Readjust Resolution and Color

See Step 2 for details. You can test your video card at lower settings to find the highest resolution and color-bit display your video card will support.

Adjust Refresh Rate

Select Settings, select Control Panel, Select Display (or right-click on the desktop, select Properties). On the Settings tab, click Advanced. Select the Adapter tab. Set your refresh rate to Optimal. If the problem persists, set the refresh rate to 75Hz or lower.

Update Video Card Drivers

Although Planar monitors do not require drivers, your video card does. Try updating the drivers for your video card (contact the manufacturer for the latest versions). Then you may be able to increase the resolution and color and improve the visual performance.

You can register this product and see the User's Manual at www.planar.com/support