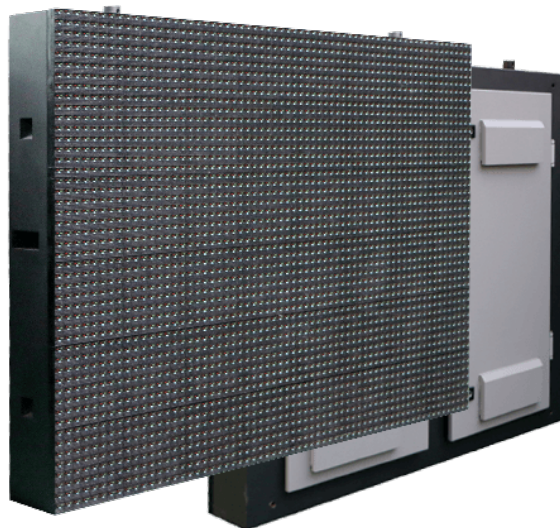


Leyard uLV20A-G

Outdoor LED Video Wall

The Leyard® uLV Series is a line of outdoor LED video walls available in 10, 16 and 20 millimeter pitches for high-brightness environments. If your outdoor LED video wall is to be viewed from a further distance, the Leyard uLV Series provides exceptional value while delivering a vivid, bright and consistent image. Highly scalable and front serviceable, the Leyard uLV Series' efficient design reduces construction and operation costs. Its highly reliable, weather-resistant design delivers 24x7 run-time in a wide range of environments.



SPECIFICATION	DETAIL
Product Name	uLV20A-G
Planar Part Number	uLV20A-G
Pixel Pitch	20.0mm
Resolution (per LED Cabinet)	64x48
Pixel Density (Pixels per LED Cabinet)	3,072
Pixel Density	232 per sq. foot (2,500 per sq. meter)
Gap Between LED Cabinets	Seamless
Bezel Width	None
LED Type	LED Lamp
Pixel Configuration	1R1G1B
LED Configuration	1 Red, 1 Green, 1 Blue
Brightness, Uncalibrated, Calibrated	5,500 - 6,500
Brightness, Uniformity	97%
Viewing Angle, Horizontal	135°
Viewing Angle, Vertical	60°
Color Uniformity	within $\pm 0.003C_xC_y$

Color Temperature, Adjustable (k)	3,200-9,300, adjustable
Contrast Ratio	6,000:1
Frame Rate	50, 60 Hz
LED Refresh Rate	1,920 Hz
Power Consumption, Maximum (watts)	651/cabinet, 650 per sq. meter
Power Consumption, Typical (watts)	217/cabinet, 200 per sq. meter
Runtime Duty Cycle	24x7
Lifetime: Typical	50,000 hours to half brightness
Acoustic Noise	Fanless Operation
Operating Temperature/Humidity (degrees F/C, relative humidity)	-4° to +104°F (-20° to +40°C) at 10-90% RH
Storage Temperature/Humidity (degrees F/C, relative humidity)	-22° to +140°F (-30° to +60°C) at 10-80% RH
LED Cabinet Size (W x H x D)	50.39" x 37.80" x 5.91" (1,280 mm x 960 mm x 150 mm) (cabinet only, not including mount)
LED Cabinet Diagonal	62.99" (1,600 mm)
LED Cabinet area	13.23 sq. feet (1.2288 sq. meters)
LED Cabinet Weight	112.4 lbs (51 kg)
Warranty	2 year limited warranty
Professional Services	Install, Service
Adjustable Mount	Optional
Environment	Outdoor
Application	Fixed
Installation, Service	Front
Standard Mounting Configurations	Fixed, Self Standing
Americans with Disability Act (ADA) Compliance	No
Power Supply Type	Integrated
Line Voltage	100-220 Volts AC, 50 & 60Hz
Video Input Type	HDMI, DVI
Video Input Resolution Maximum	2560x1600 @ 60 Hz
Regulatory Compliance	UL, CE, FCC
Display Control	Leyard® Control Software included

Control Input Type	USB
IP Rating	IP65 (front), IP43 (rear)

For more information, please visit www.planar.com

Specifications are subject to change without notice.

Specification Report Date: 1/21/2018

© Copyright 2018 Planar Systems, Inc. All rights reserved