



**PA1575R All-in-One
Touchscreen Computer**

USER'S GUIDE

www.planartouch.com

The information contained in this document is subject to change without notice. This document contains proprietary information that is protected by copyright. All rights are reserved. No part of this document may be reproduced, translated to another language or stored in a retrieval system, or transmitted by any means, electronic, mechanical, photocopying, recording, or otherwise, without prior written permission. Windows is a registered trademark of Microsoft, Inc. Other brand or product names are trademarks of their respective holders.

Important Recycle Instructions:


 Lamp(s) inside this product contains mercury. This product may contain other electronic waste that can be hazardous if not disposed of properly. Recycle or dispose in accordance with local, state, or federal Laws. For more information, contact the Electronic Industries Alliance at WWW.EIAE.ORG. For lamp specific disposal information check WWW.LAMPRECYCLE.ORG.

Table of Contents

Usage Notice

Precautions	1
-------------------	---

Introduction

About PA1575R	2
Package Overview	4

Installation

Product Overview	5
Kensington Security Slot.....	6
VESA Mount your Computer.....	7
Start Your Installation.....	8
Remove the Deskstand	9

User Controls

Side Panel Controls	10
Initial Turn-On	11
XP PRO Initial On Steps.....	11
WEPOS Initial On Steps	18
Test Devices	20
Testing the Touchscreen	20
Recovering the Operating System.....	22
1.Using the Recovery CD	22
A.For XP Pro.....	22
B.For WEPOS.....	30
2.PA1575R Touchscreen Driver Install Instructions:	34
Display Specifications.....	35
Power Supply Specifications	36
Environmental Specifications.....	36
Touch Computer Specifications	37
How to Use the OSD Menus.....	40
On-Screen Display Menus.....	41

Appendix

Troubleshooting.....	42
Warning Signal	42
No Signal	42
Going to Sleep.....	42
Out of Range	42
Product Dimensions.....	43
Compatibility Modes	44
Product Registration and Technical Support	45

Usage Notice



Warning - To prevent the risk of fire or shock hazards, do not expose this product to rain or moisture.



Warning - Please do not open or disassemble the product as this may cause electric shock.

Precautions

Follow all warnings, precautions and maintenance as recommended in this user's manual to maximize the life of your unit.

Do:

- Turn off the product before cleaning.
- Touch screen surface may be cleaned using a soft clean cloth moistened with mild window glass commercial cleaners or 50/50 mixture of water and isopropyl alcohol.
- Use a soft cloth moistened with mild detergent to clean the display housing.
- Use only high quality and safety approved AC/DC adapter.
- Disconnect the power plug from AC outlet if the product is not going to be used for an extended period of time.

Don't:

- Do not touch the LCD display screen surface with sharp or hard objects.
- Do not use abrasive cleaners, waxes or solvents for your cleaning.
- Do not operate the product under the following conditions:
 - Extremely hot, cold or humid environment.
 - Areas susceptible to excessive dust and dirt.
 - Near any appliance generating a strong magnetic field.
 - In direct sunlight.

Introduction

About PA1575R

The PA1575R is All-in-One Touch computer model. It has a 15" flat panel screen with an active matrix, thin-film transistor (TFT) liquid crystal display (LCD).

The PA1575R incorporates the Mobile Intel® 910GMLE/915GME Chipset, consisting of the Intel® 910GMLE/ 915GME Graphic Memory Controller Hub (GMCH) and Intel® I/O Controller Hub 6-M (ICH6-M), is an optimized integrated graphics solution with a 400/533MHz front-side bus.

The integrated 32-bit 3D graphics engine, based on Intel® Graphics Media Accelerator 900 (Intel® GMA 900) architecture, operates at core speeds of up to 320 MHz. It features a low-power design, is validated with Intel® Pentium M/ Celeron® M processors on 130nm or 90nm process.

Intel® Graphics supports a unique intelligent memory management scheme called Dynamic Video Memory Technology (DVMT). DVMT handles diverse applications by providing the maximum availability of system memory for general computer usage, while supplying additional graphics memory when a 3D-intensive application requests it. The Intel GMA 900 graphics architecture also takes advantage of the high-performance Intel processor. Intel GMA 900 graphics supports Dual Independent Display technology.

Features include:

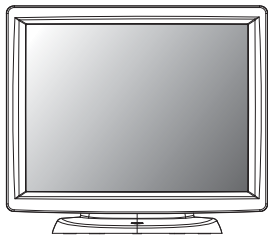
- Supports Celeron® M processor, 400MHz FSB (910GMLE chipset)
- Supported Operating Systems: Windows® XP and WePOS
- DDRII SODIMM Slot x 2, up to 2GB system memory (Standard 1GB)
- Onboard 10/100 BaseT and Gigabit LAN
- Supported dual display, Main display with OSD function.
- 3 USB 2.0, one 12V powered USB, 4 COM(one ext./3 int. w/header), Watchdog timer
- One Mic, one Earphone, PS2 KB/MS, cash drawer port, VGA, DC 12V input
- Active matrix TFT LCD technology
- 1024x768 XGA resolution
- 15" viewable display area
- 0.297mm x 0.297mm pixel pitch
- Multilingual OSD user control
- Kensington security slot
- 75 mm VESA mount

- Removable base for flexible mounting solutions.
- 5-wire resistive touch screen with USB controller
- Built-in speakers-1W x 2

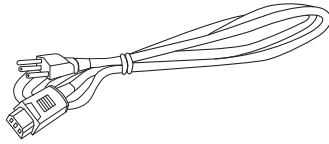
Touch Screen for PA1575RXP / PA1575RWP

- Analog 5-wire resistive touch screen for finger and stylus input
- Surface: Anti-glare treatment
- Transmittance: 80% (Typ.)

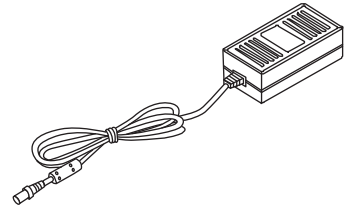
Package Overview



LCD Touch Computer



Power Cord



DC Power Supply



PS/2 Y-Cable



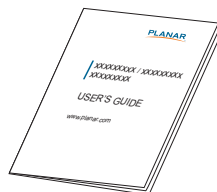
Recovery CD



Touch Screen Driver
Installation CD-ROM



Landing Strip

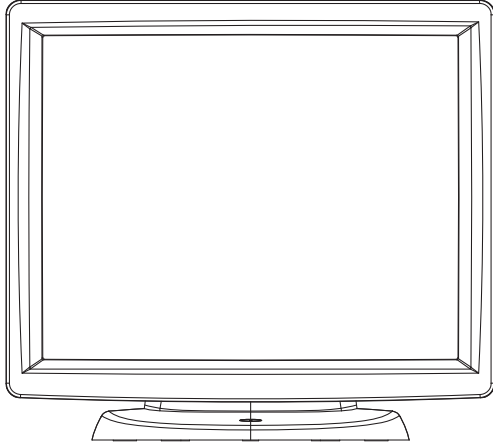


User's Guide

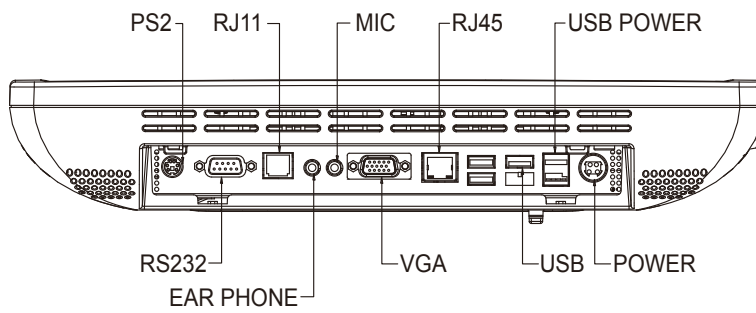
Installation

Product Overview

- Front View

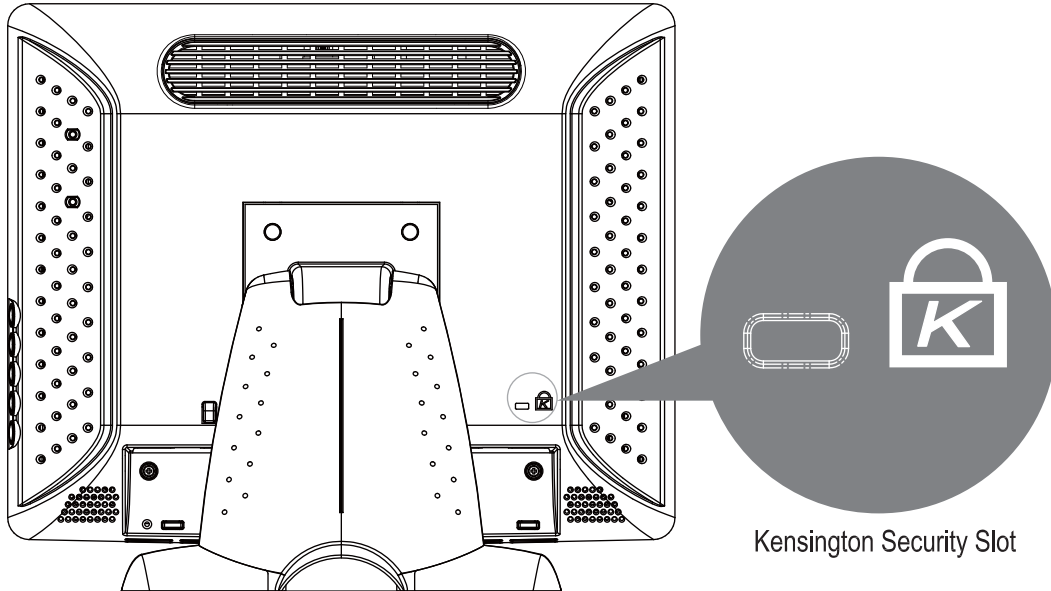


- PA1575R Button View (Without Stand)



Kensington Security Slot

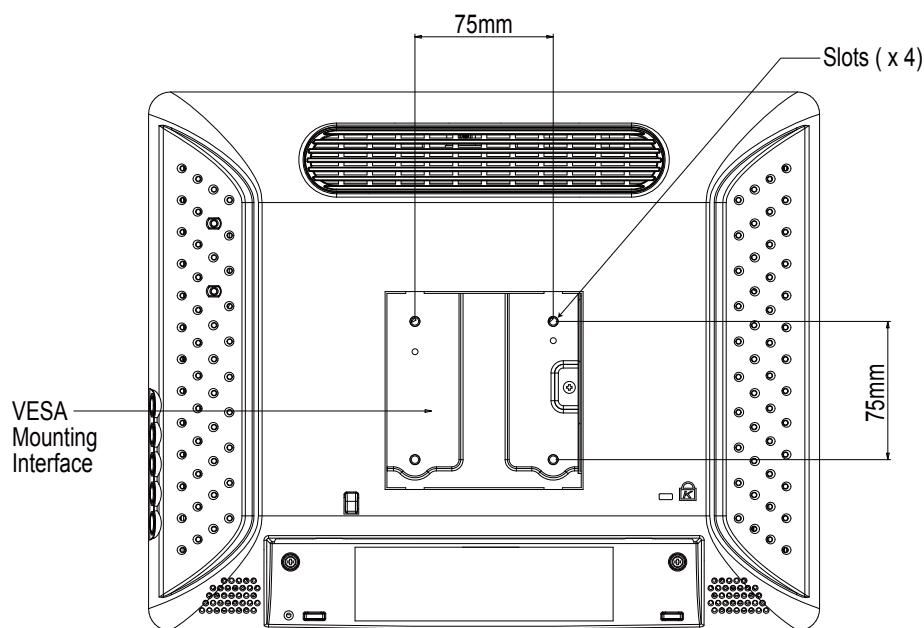
The computer can be secured to your desk or any other fixed object with Kensington lock security products. The Kensington lock is not included.



VESA Mount Your Computer

This computer conforms to the VESA Flat Panel Mounting Physical Mounting Interface Standard which defines a physical mounting interface for flat panel computers, and corresponding with the standard mounting devices of flat panel computer, such as wall and table arms. The VESA mounting interface is located on the back of touch computer.

To mount the computer on a swing arm or other mounting fixture, follow the instructions included with the mounting fixture to be used, please note to mount touch computer to the devices (either mounting fixture or swing arm) what conforms to the UL listed.



Warning!

Please select the proper screws!

The distance between the back cover surface and the bottom of the screw hole is 8 mm. Please use four M4 screws diameter with proper length to mount your monitor.

NOTE: the stand will support up to 11 lbs (5kg).

Start Your Installation

Remove the Back Cover

Please follow these instructions to remove the cover on the back panel of the LCD so that you can hookup the cables to associated connector.

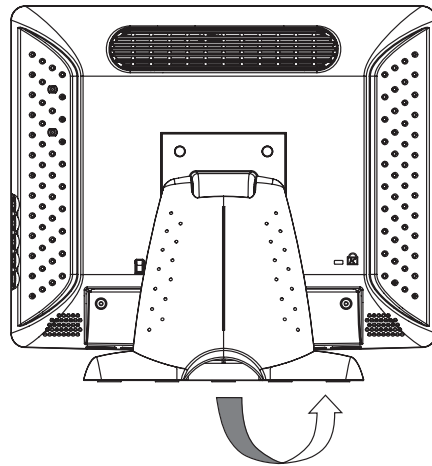
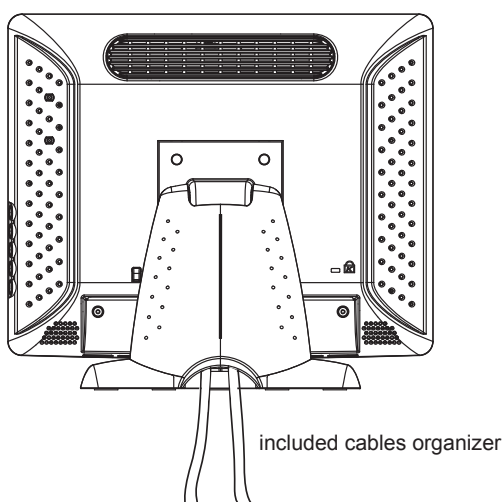


Figure A

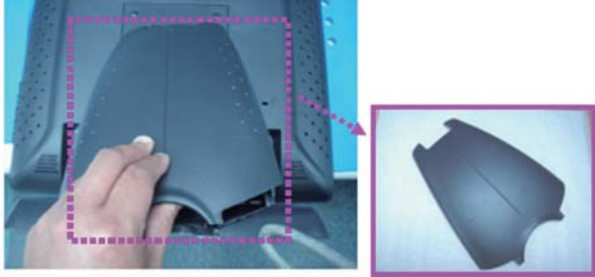

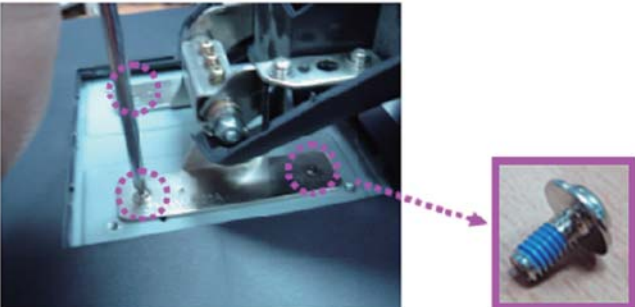
1. Remove the stand back cover by pulling in the direction of the arrow.
2. Connect applicable cables to the appropriate connectors.
3. Re-attach the stand back cover by pressing firmly until the tabs snap into place. You may also keep the cables in order by using the cable organizer.



Note!

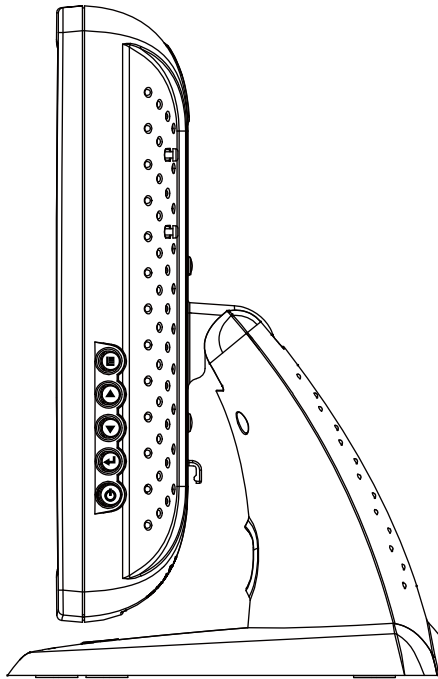
You can place the LCD flat horizontally to make it easier to connect the cables. Please make sure that you place it on an even surface lest the LCD should be damaged by scratches or collision.

Remove the Deskstand

	<p>1. Remove stand back cover.</p>
	<p>2. Remove hinge cover.</p>
	<p>3. Remove 4 screws and then remove hinge.</p>

User Controls

Side Panel Controls



Icon	key Name
	Menu
	Up
	Down
	Enter
	Power

OSD Key	Menu off status	Menu on status
	Menu appear	Menu disappear/ return to main item
	Brightness	Main item select up/ Adjust up
	Mute	Main item select down/ Adjust down
	Enter/Select sub-item function	
	Power On/Off	

Initial Turn-On

The initial setup of the operating system takes approximately 5-10 minutes. Additional time may be needed depending on touch computer hardware configuration and connected devices. To setup the Windows OS for the touch computer, turn on the touch computer and follow the instructions on the screen.

XP PRO Initial On Steps

Step 1. Boot Computer

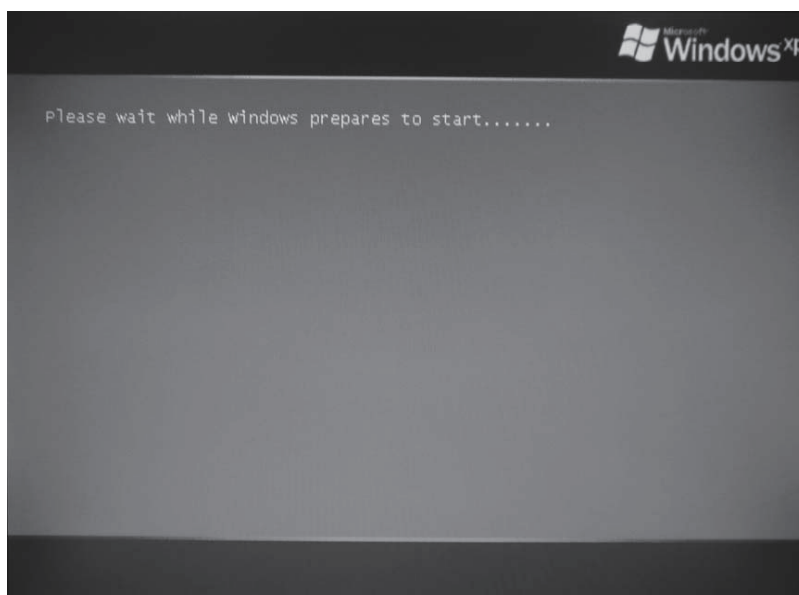
```
PCI device listing ...
Bus No. Device No. Func No. Vendor/Device Class Device Class IRQ
0 2 0 8086 2592 0300 Display Cntrlr 7
0 27 0 8086 2668 0403 Multimedia Device 7
0 29 0 8086 2658 0C03 USB 1.0/1.1 UHCI Cntrlr 9
0 29 1 8086 2659 0C03 USB 1.0/1.1 UHCI Cntrlr 5
0 29 2 8086 265A 0C03 USB 1.0/1.1 UHCI Cntrlr 5
0 29 3 8086 265B 0C03 USB 1.0/1.1 UHCI Cntrlr 7
0 29 7 8086 265C 0C03 USB 2.0 EHCI Cntrlr 9
0 31 2 8086 2653 0101 IDE Cntrlr 14
0 31 3 8086 266A 0C05 SMBus Cntrlr 5
1 0 0 10EC 8168 0200 Network Cntrlr 7
ACPI Controller 9

Verifying DMI Pool Data .....

Intel UNDI, PXE-2.1 (build 082)
Copyright (C) 1997-2000 Intel Corporation

For Realtek RTL8111B/8111C Gigabit Ethernet Controller v2.13 (071227)
PXE-E61: Media test failure, check cable
PXE-M0F: Exiting PXE ROM.
Boot from CD :

Press any key to boot from CD...
```

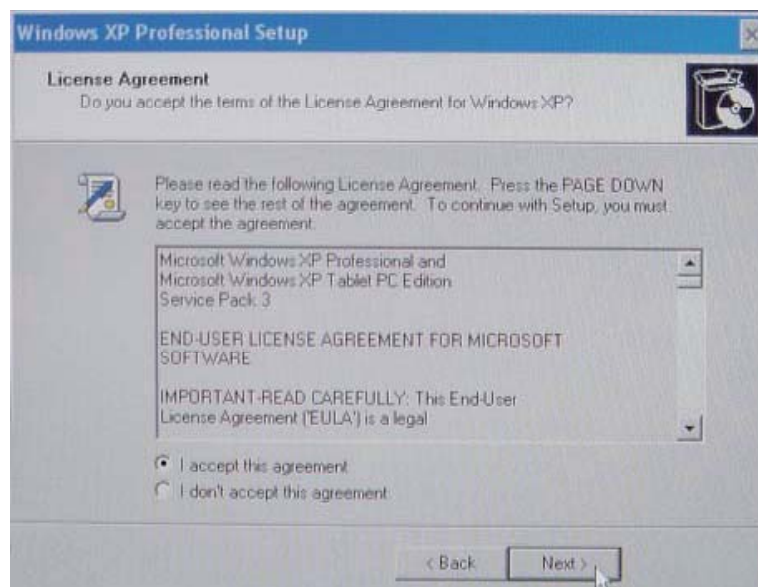




Step 2. Press "Next"



Step 3. Read agreement and press " I accept this agreement" and "Next".

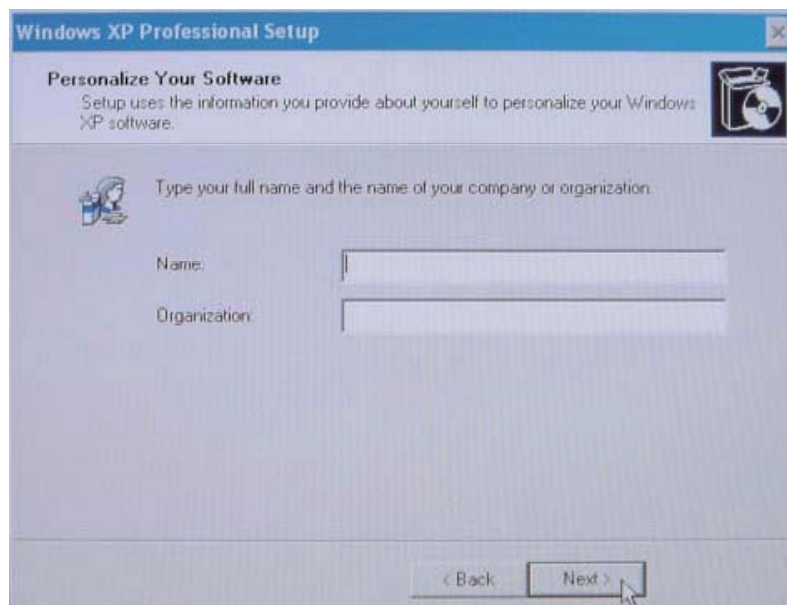


Step 4. Language Selection, Press "Next"

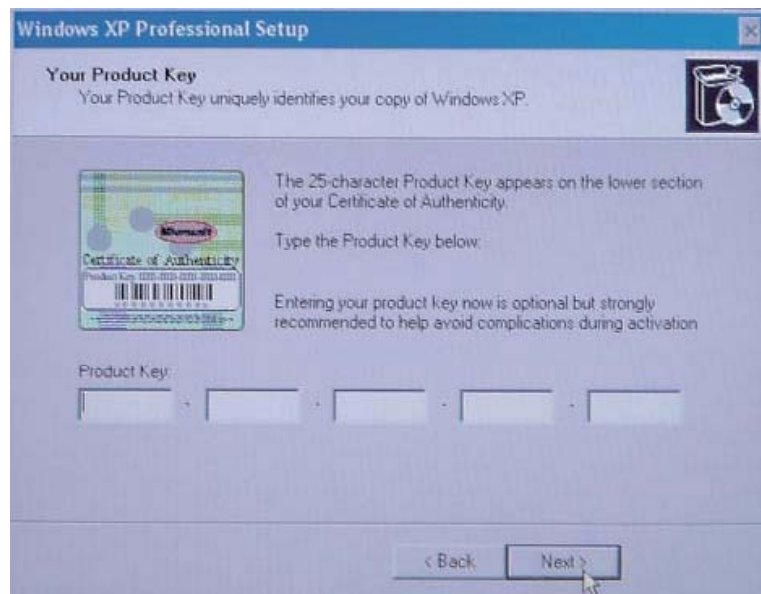


Click Customize. The Regional and Language window shown below will appear.

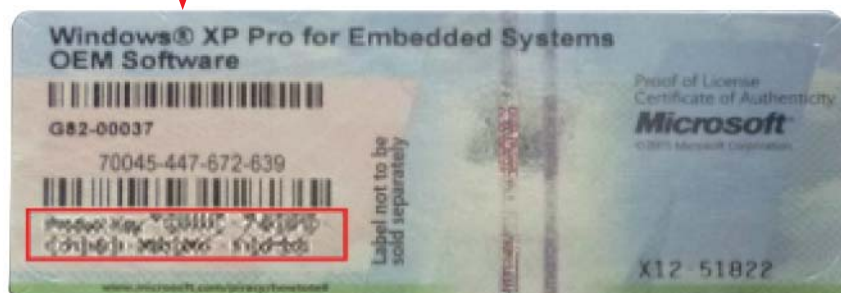
Step 5. Type your full name, organization and press "Next"



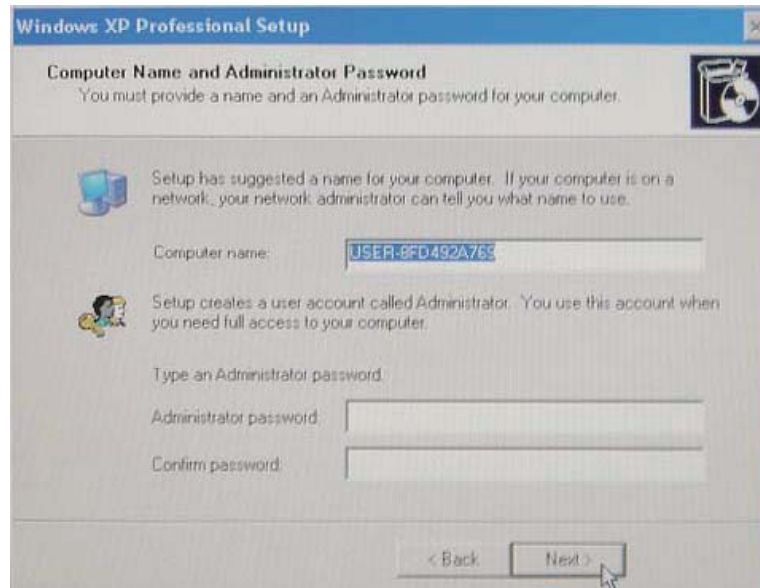
Step 6. Type product key and press "Next"



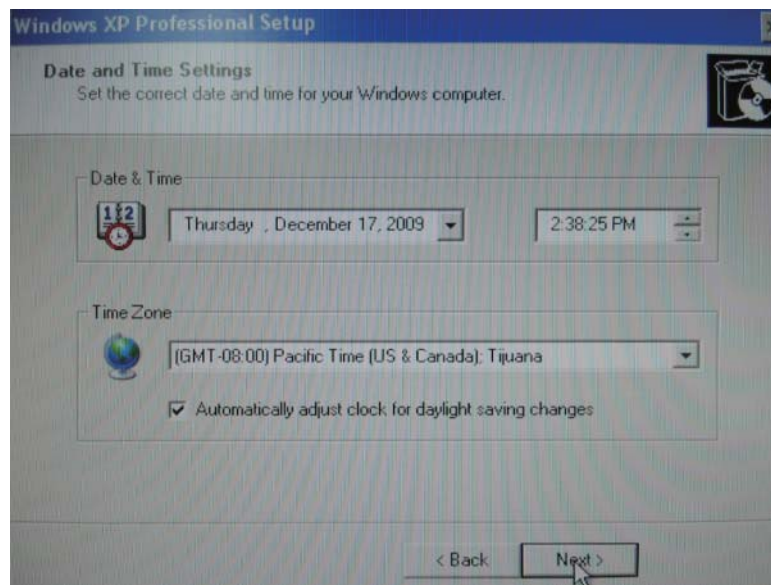
Please find the "Certificate of Authenticity" license label on the back-cover.



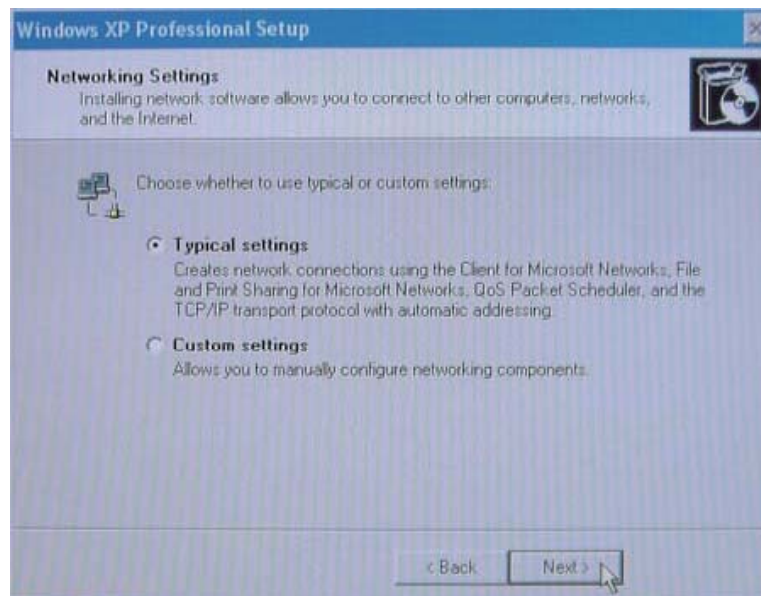
Step 7. Setup your computer name, administrator password and press "Next"



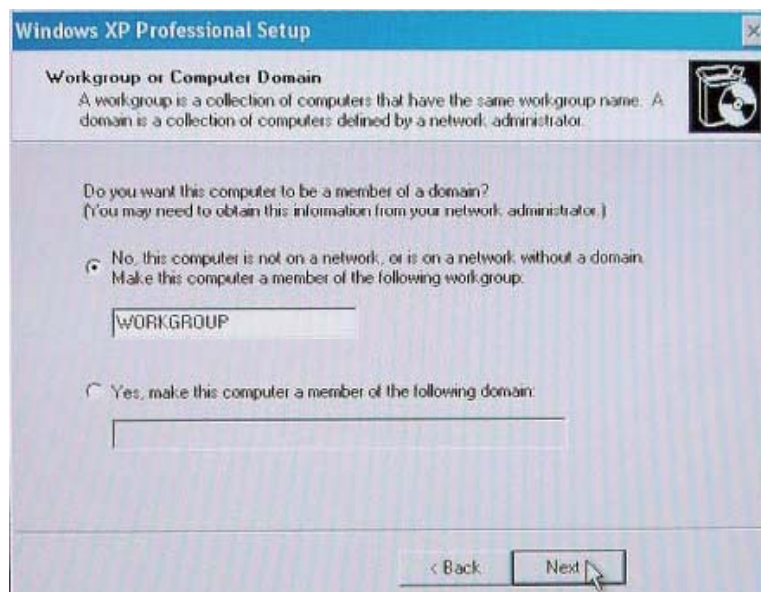
Step 8. Date and Time Settings, Setup your computer date and time and press "Next"

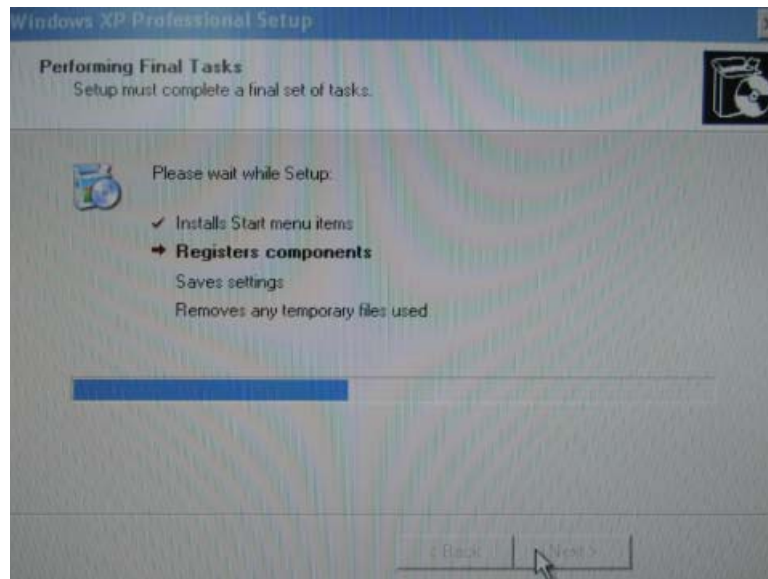


Step 9. Choose typical or custom setting and press "Next"



Step 10. Choose applicable option



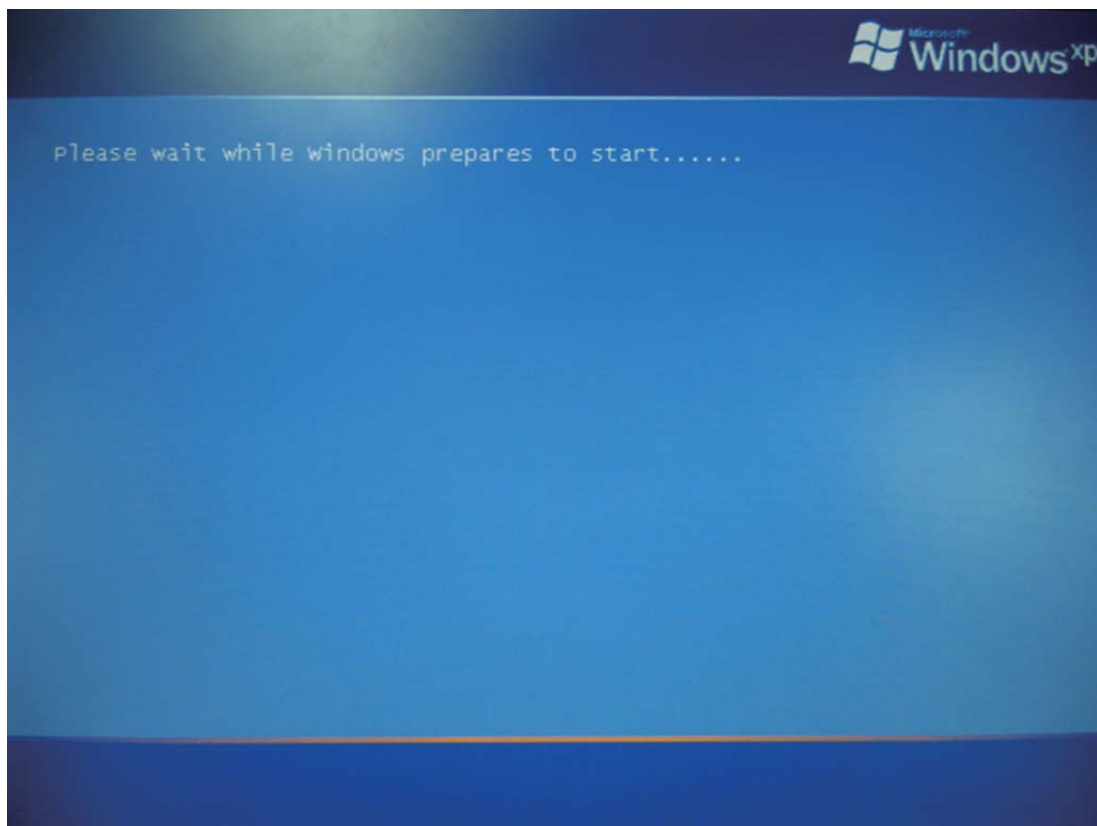


Step 11. Press "Finish"



WEPOS Initial On Steps

Step 1. Boot Computer



Step 2. Enter log on screen, the default User name is showed "Administrator"

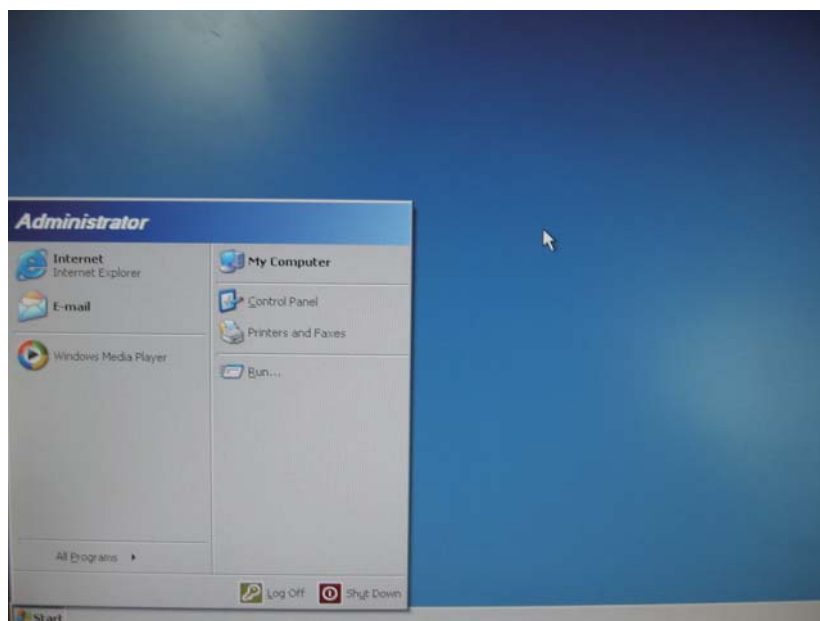


Step 3. Please type the default Password="~tpc152~"

(Note: Please enter Start\Control Panel\ User Accounts to change password after logging on windows system at first time.)



Step 4. Finish



Test Devices

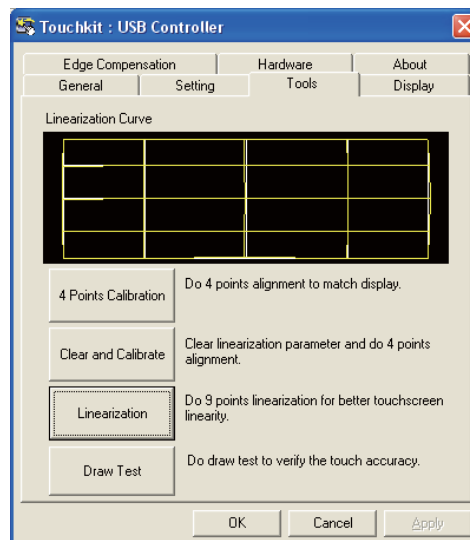
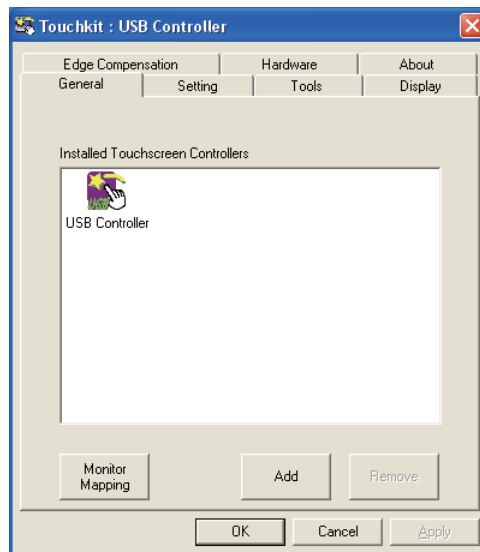
The touch computer can be pre-installed with several different hardware options. To test an optional device that is installed on the touch computer, follow the instructions below.

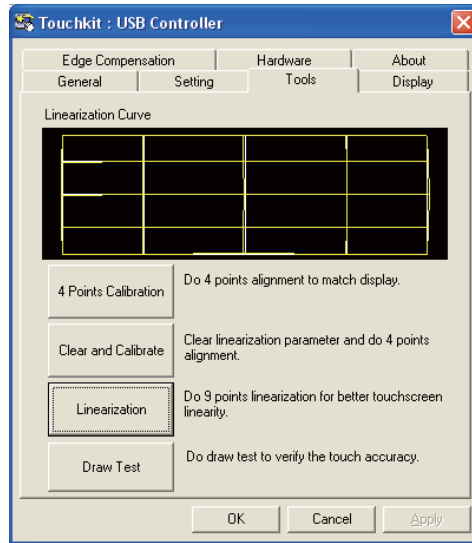
NOTE: Testing icons are located on the desktop. Testing of a particular device can only be done after the device is properly installed.

Testing the Touchscreen

The touchscreen is pre-calibrated for accurate touch response.

Calibration* If for any reason the touchscreen needs to be re-calibrated, double-click the Touchscreen-test icon. The window shown below will open.





Recovering the Operating System

If the touch computer's operating system and software needs to be recovered, insert the included recovery disk into an external DVD-ROM (sold separately) and reboot the touch computer. Follow the on-screen instructions to complete recovery.

NOTE: All data will be deleted during the recovery process. User must back up files prior to recovering the operating system.

1. Using the Recovery CD

A. For XP Pro

To recover your pre-installed software using the recovery CD, do as follows:

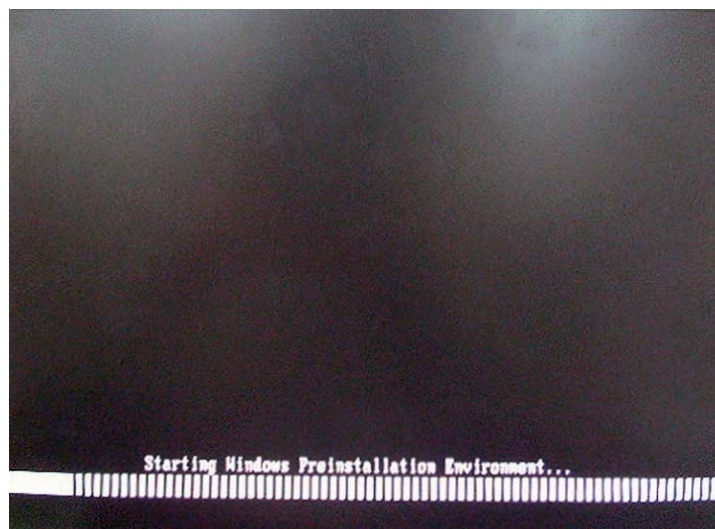
- Step 1.** From the Start menu, restart your computer.
- Step 2.** Insert "Recovery CD" in CD-ROM to begin sequence.
- Step 3.** Press any key to boot from CD

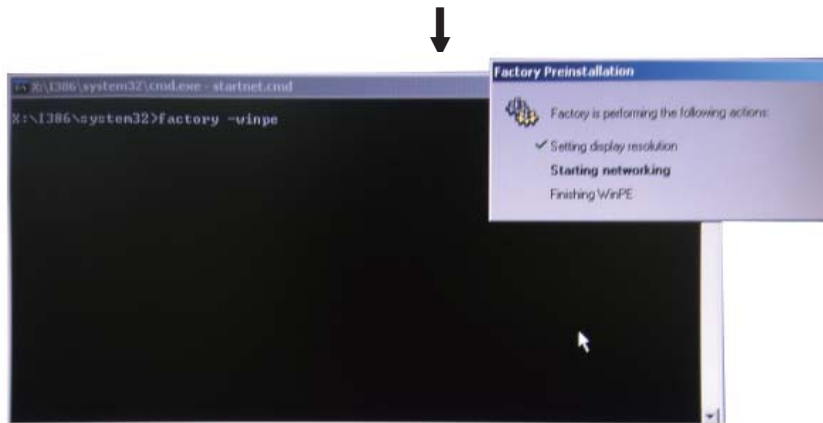
```
PCI device listing ...
Bus No. Device No. Func No. Vendor/Device Class Device Class IRQ
-----
0 2 0 8086 2592 0300 Display Cntrlr 7
0 27 0 8086 2668 0403 Multimedia Device 7
0 29 0 8086 2658 0C03 USB 1.0/1.1 UHCI Cntrlr 9
0 29 1 8086 2659 0C03 USB 1.0/1.1 UHCI Cntrlr 5
0 29 2 8086 265A 0C03 USB 1.0/1.1 UHCI Cntrlr 5
0 29 3 8086 265B 0C03 USB 1.0/1.1 UHCI Cntrlr 7
0 29 7 8086 265C 0C03 USB 2.0 EHCI Cntrlr 9
0 31 2 8086 2653 0101 IDE Cntrlr 14
0 31 3 8086 266A 0C05 SMBus Cntrlr 5
1 0 0 10EC 8168 0200 Network Cntrlr 7
ACPI Controller 9

Verifying DMI Pool Data .....

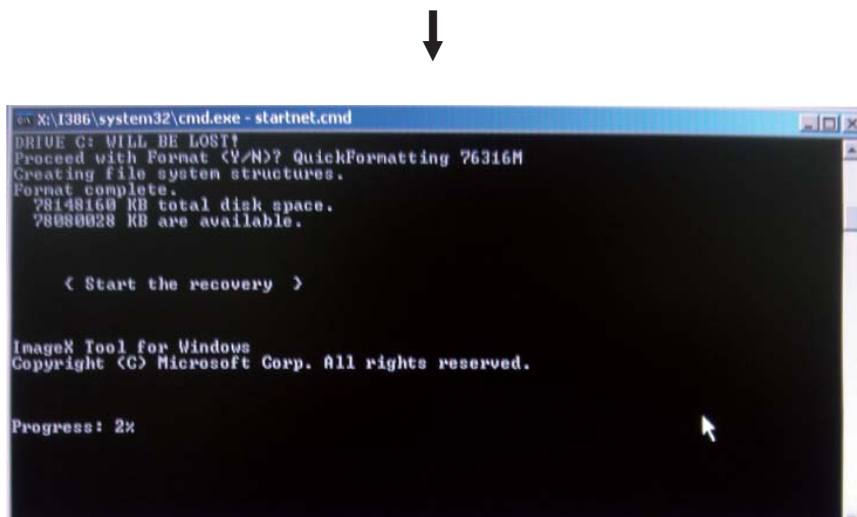
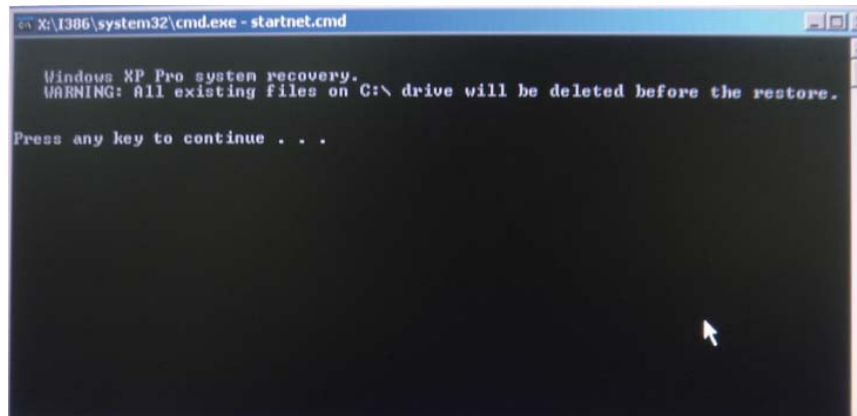
Intel UNDI, PXE-2.1 (build 082)
Copyright (C) 1997-2000 Intel Corporation

For Realtek RTL8111B/0111C Gigabit Ethernet Controller v2.13 (071227)
PXE-EG1: Media test failure, check cable
PXE-M0F: Exiting PXE ROM.
Boot from CD :
Press any key to boot from CD...
```

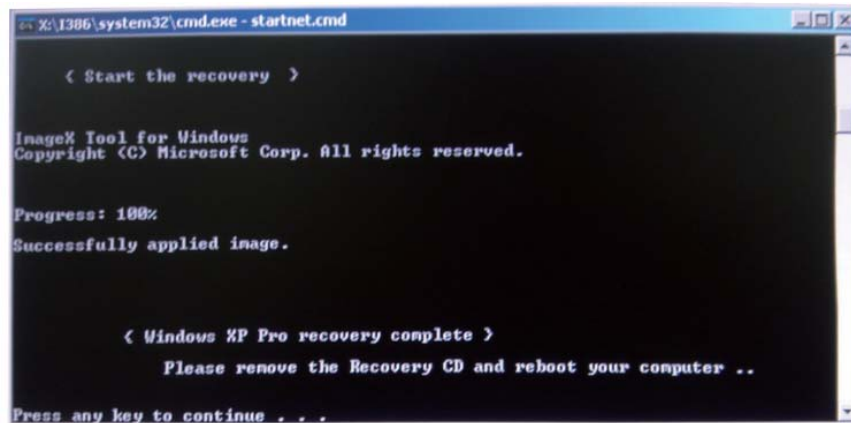




Step 4. Press any key to continue



Step 5. Press any key to continue



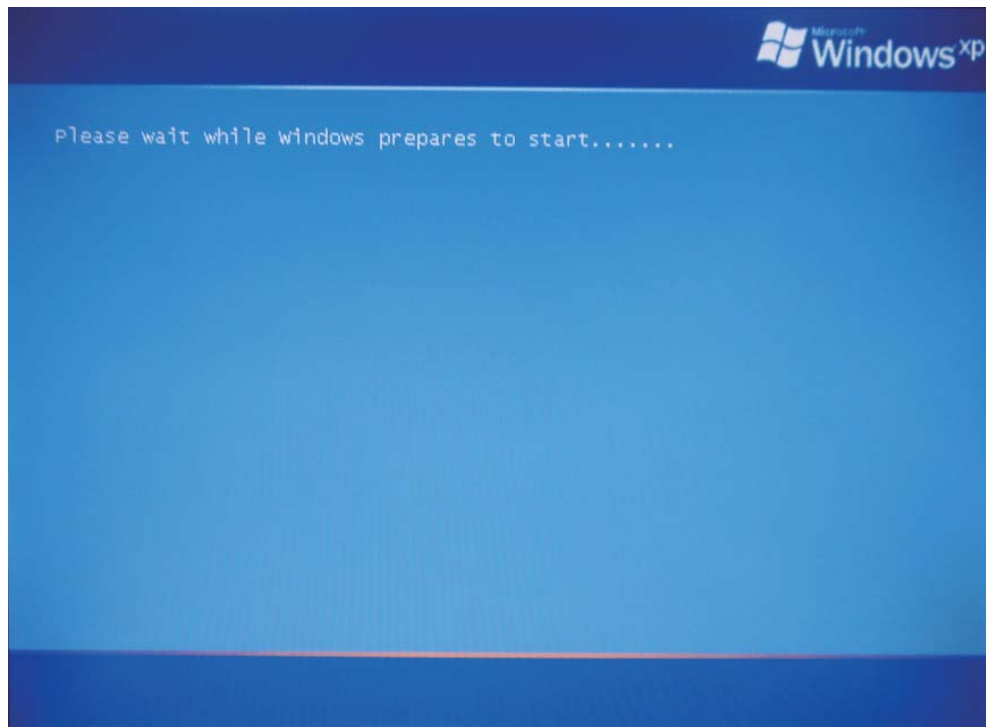
```
X:\1386\system32\cmd.exe - startnet.cmd

< Start the recovery >

ImageX Tool for Windows
Copyright (C) Microsoft Corp. All rights reserved.

Progress: 100%
Successfully applied image.

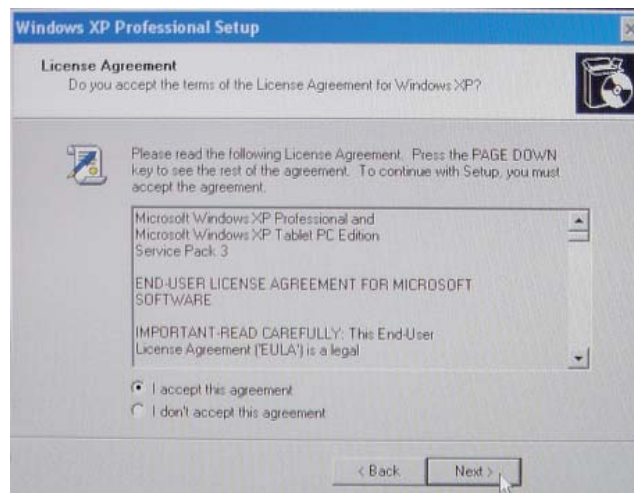
< Windows XP Pro recovery complete >
Please remove the Recovery CD and reboot your computer ..
Press any key to continue . . .
```



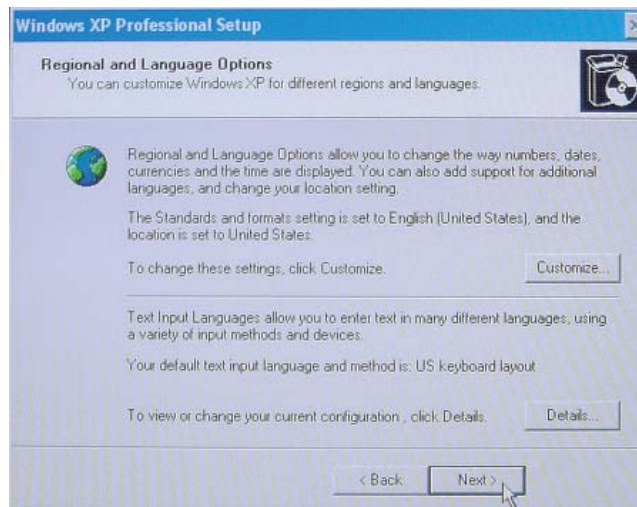
Step 6. Press "Next"



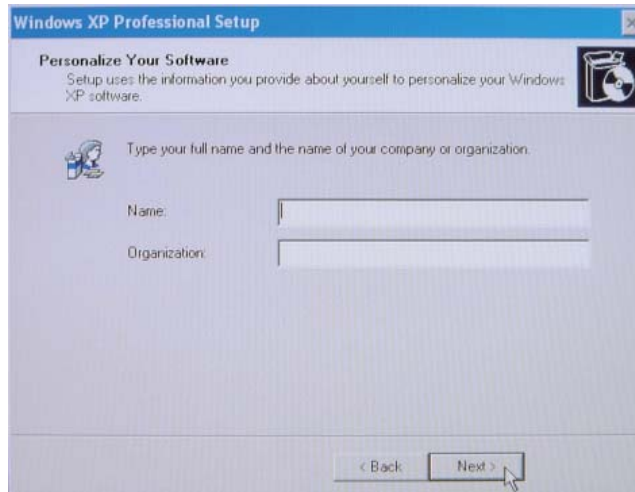
Step 7. Read agreement and press "I accept this agreement" and "Next".



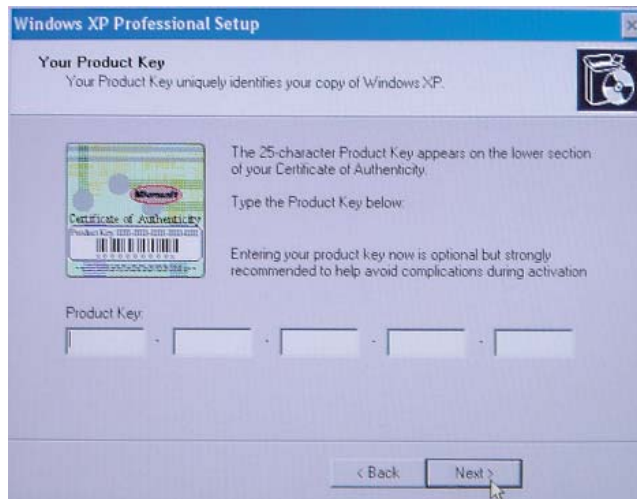
Step 8. Press "Next"



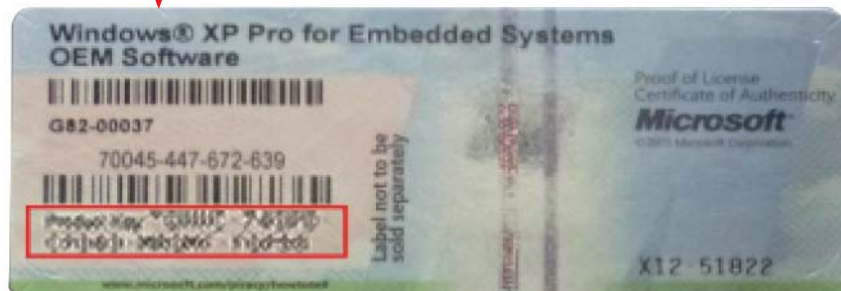
Step 9. Type your full name, organization and press "Next"



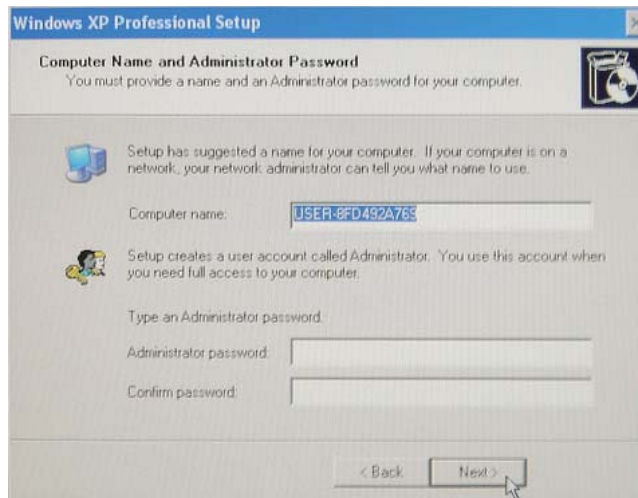
Step 10. Type product key and press "Next"



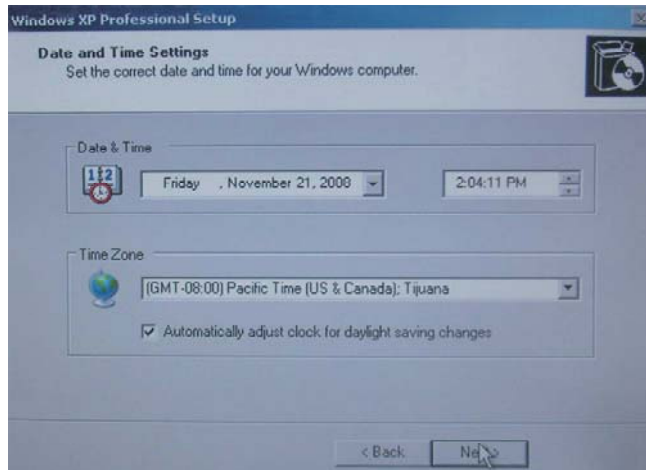
Please find the "Certificate of Authenticity" license label on the back-cover.



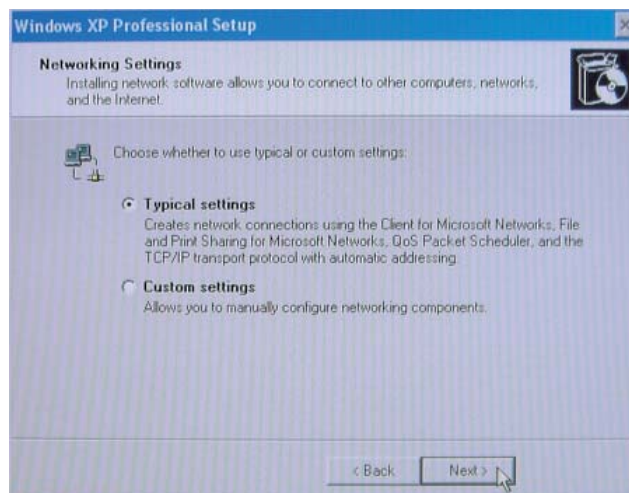
Step 11. Setup your computer name, administrator password and press "Next"



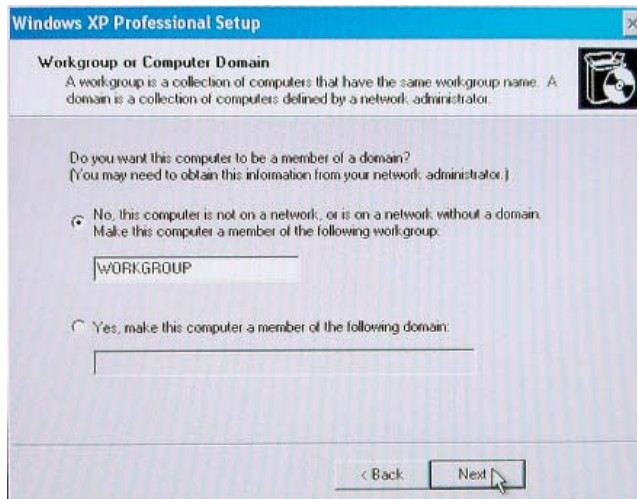
Step 12. Setup your computer date and time and press "Next"



Step 13. Choose typical or custom setting and press "Next"



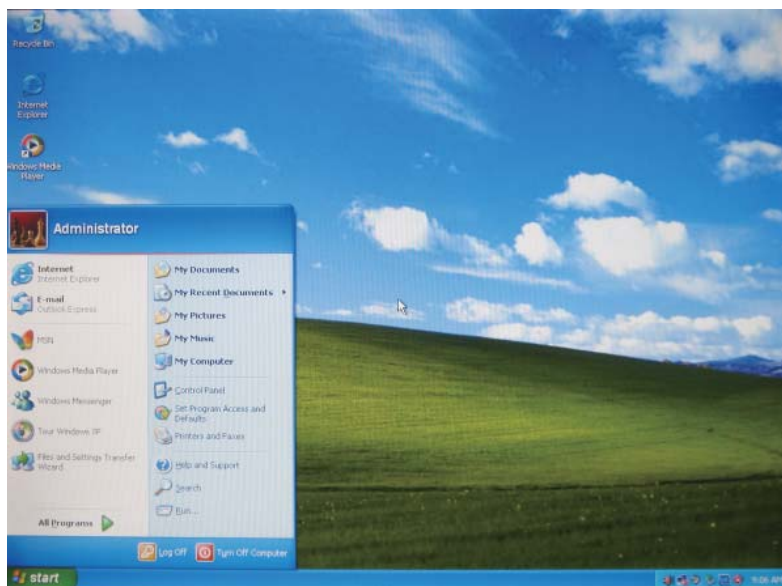
Step 14. Choose applicable option



Step 15. Press "Finish"



Step 16. Finish and launch windows system



B. For WEPOS

To recover your pre-installed software using the recovery CD, do as follows:

Step 1. From the Start menu, restart your computer.

Step 2. Insert "Recovery CD" in CD-ROM to start-up sequence.

Step 3. Press any key to boot from CD

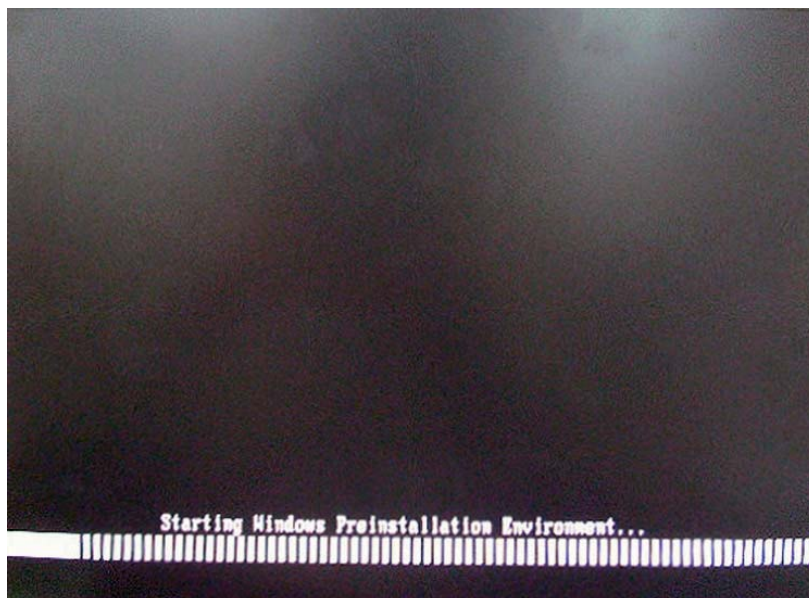
```
PCI device listing ...
Bus No. Device No. Func No. Vendor/Device Class Device Class      IRQ
-----
  0      2         0      8086  2592  0300  Display Cntrlr      7
  0     27         0      8086  2668  0403  Multimedia Device   7
  0     29         0      8086  2658  0C03  USB 1.0/1.1 UHCI Cntrlr  9
  0     29         1      8086  2659  0C03  USB 1.0/1.1 UHCI Cntrlr  5
  0     29         2      8086  265A  0C03  USB 1.0/1.1 UHCI Cntrlr  5
  0     29         3      8086  265B  0C03  USB 1.0/1.1 UHCI Cntrlr  7
  0     29         7      8086  265C  0C03  USB 2.0 EHCI Cntrlr    9
  0     31         2      8086  2653  0101  IDE Cntrlr          14
  0     31         3      8086  266A  0C05  SMBus Cntrlr        5
  1      0         0     10EC  8168  0200  Network Cntrlr      7
                          ACPI Controller      9

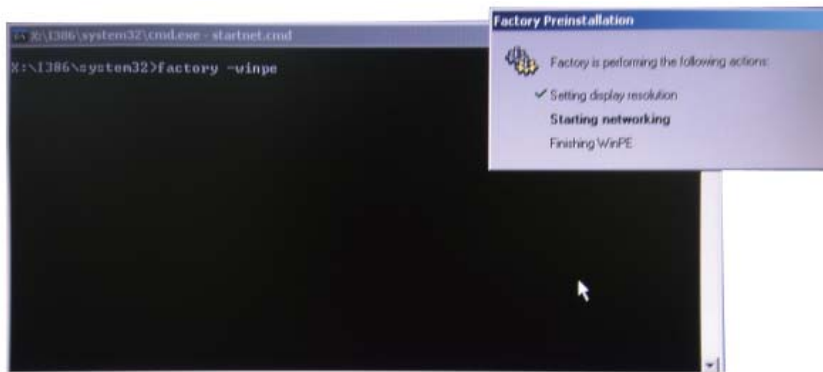
Verifying DMI Pool Data .....

Intel UNDI, PXE-2.1 (build 002)
Copyright (C) 1997-2000 Intel Corporation

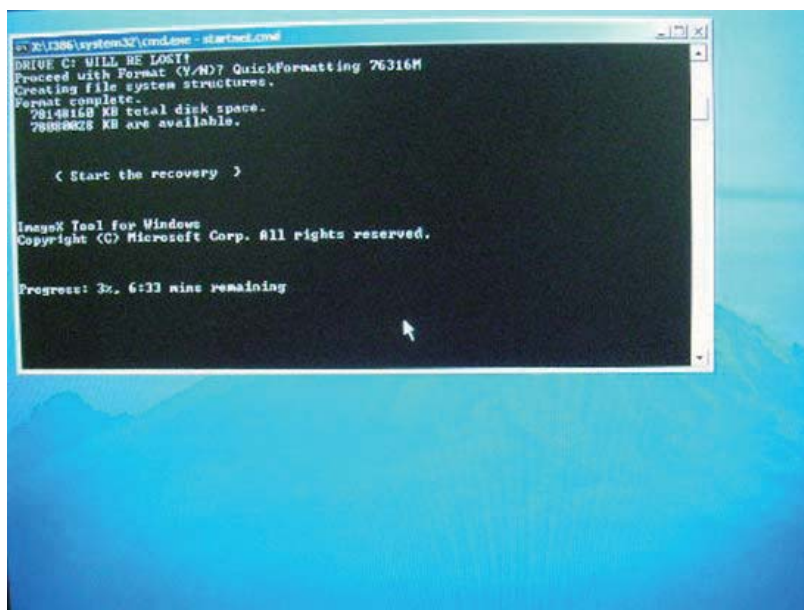
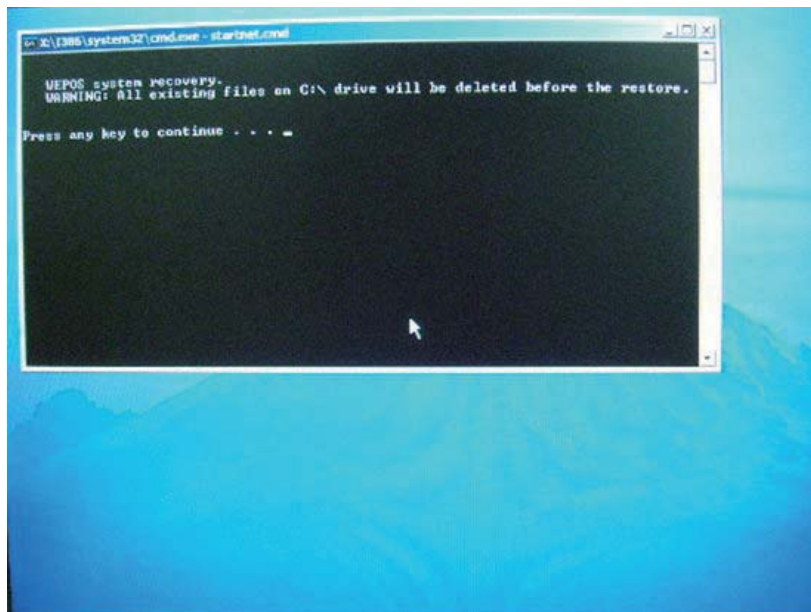
For Realtek RTL8111D/8111C Gigabit Ethernet Controller v2.13 (071227)
PXE-E61: Media test failure, check cable
PXE-M0F: Exiting PXE ROM.
Boot from CD :

Press any key to boot from CD...
```

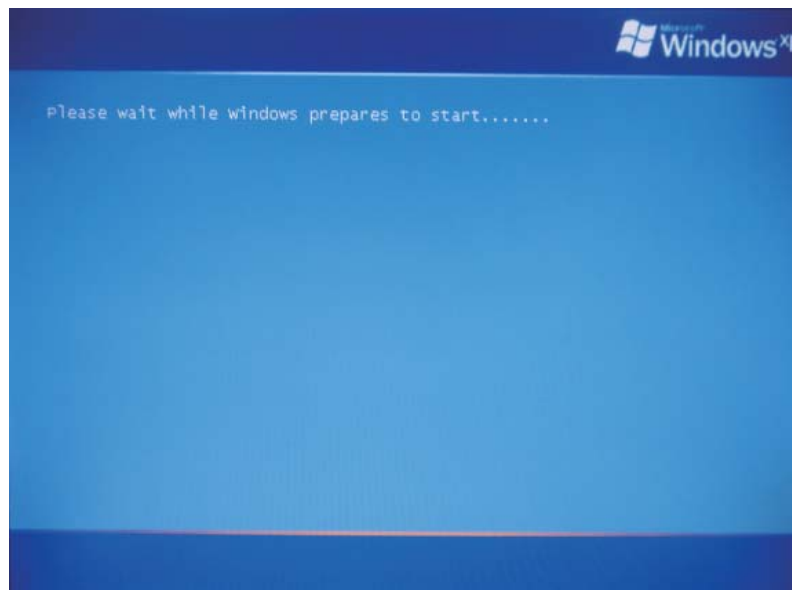
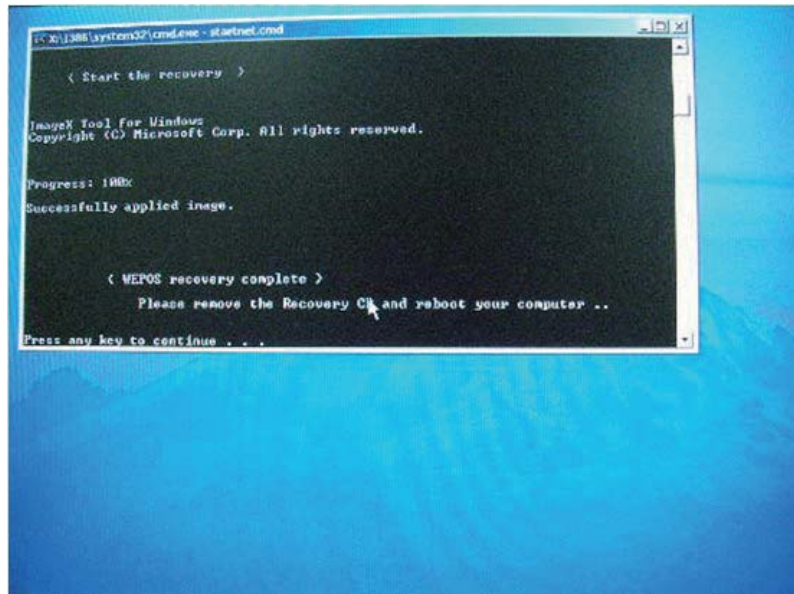




Step 4. Press any key to continue



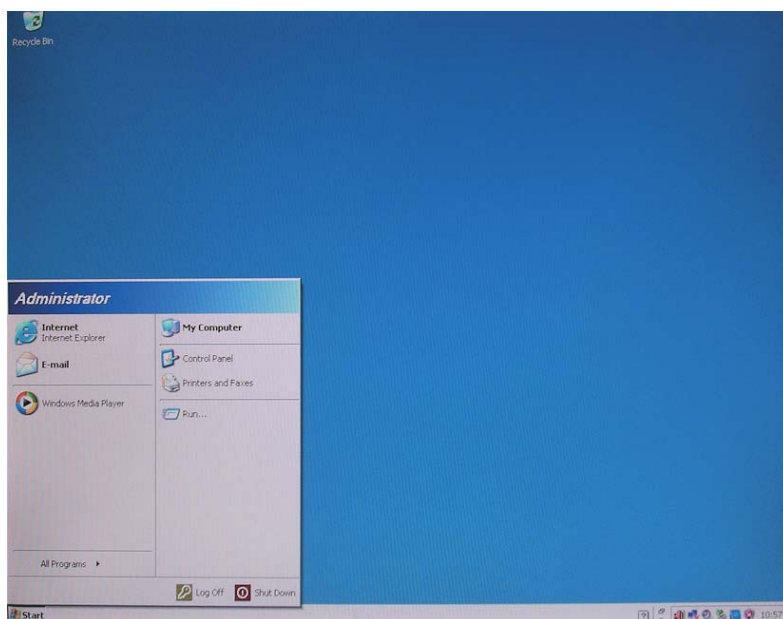
Step 5. Press any key to continue



Step 6. The default User name is showed “Administrator”, please type the “~tpc152~” in password column and press OK.
(Note: Please enter Start\Control Panel\ User Accounts to change password after logging on windows system at first time.)



Step 7. Finish and launch Windows System.



2. PA1575R Touchscreen Driver Install Instructions:

The touch driver is located on the enclosed CD-ROM for these operating systems:
Windows® XP and WePOS

Step 1. Insert the included Touchscreen disk into an external DVD-ROM (sold separately)

Step 2. Select the monitor size 15” and then model name PA1575R.

Step 3. Click on the “Load Driver” button that appears to the right of the model name.

Step 4. Follow the step-by-step instructions as shown on the pop-up windows.

Display Specifications

Model	PA1575RXP / PA1575RWP
LCD Display	15" TFT Active Matrix Panel
Display Size	304.1(H) x 228.1(V) mm
Pixel Pitch	0.297(H) x 0.297(V) mm
Display Mode	VGA 720 x 400 (70 Hz) VGA 640 x 480 (60 Hz) SVGA 800 x 600 (60 Hz) XGA 1024 x 768 (60 Hz)
Native	XGA 1024 x 768
Display Color	16.2 million color
Plug & Play	DDC 2B

Power Supply Specifications

The touch computer shall be powered by 12VDC from a universal type power supply brick with the following characteristics:

Input voltage	100 to 240 V~
Input frequency	50/60 Hz
Output voltage	12 V
Output line and load regulation	+/- 5%
Output current	8 Amps Rated

Environmental Specifications

Temperature Ranges

Operating Temperature (Independent of altitude)	0°C to 35°C
Non-Operating Temperature (Independent of altitude)	-20°C to 60°C

Humidity

Operating (non-condensing)	20% to 80%
Non-Operating (38.7°C maximum wet bulb temperature)	10% to 90%

Altitude Ranges

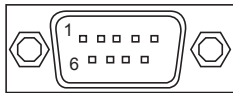
Operating	0 to + 12,000 feet [3,658m]. Equivalent to 14.7 to 10.1 psia.
Non-Operating	0 to + 40,000 feet [12,192m]. Equivalent to 14.7 to 4.4 psia.

Touch Computer Specifications

Processor	Intel Celeron M 1.0GHz CPU w/400MHz Front-Side Bus
RAM	1GB DDR2 RAM standard. Up to 2.0GB
Northbridge	Intel 910 GMLE
Southbridge	Intel ICH6M
Video	Intel GMA 900 Up to 128MB shared w/ DVMT
Operating systems	Microsoft Windows XP Professional Embedded Microsoft Windows Embedded for Point of Service (WEPOS)
Ports	3 x USB 2.0 ports 1 x 12V powered USB 2.0 port 1 x 12V cash drawer port 1 x 10/100 BaseT and Gigabit LAN 1 x Serial ports (DB9) COM1, RS232 1 x Microphone input 3.5mm 1 x Earphone Output 3.5mm 1 x VGA output 1 x PS/2 Universal
BIOS	ACPI 1.0B, APM 1.2, SMBIOS 2.2, PXE, WOL
Real Time clock	Replaceable lithium-ion battery for clock Caution: Risk of Explosion if Battery is replaced by an Incorrect Type. Dispose of Used Batteries According to the Instructions.
Storage	XP/WEPOS: 80 GB HDD(standard)
Power supply	Type: External brick Input (line) voltage: 100-240 VAC, 50-60 Hz Output voltage/current: 12 V at 8 amps
Temperature	Operating: 0°C to 35°C Storage: -20°C to 60°C
Humidity Operating:	Operating: 20%-80% Storage: 10%-90% noncondensing
Weight	Actual: 17.2 lb (6.0 kg) Shipping: 22.5 lb (8.93 kg) Shipping box dimensions 465 x 375x 288
Backlight lamp life	Min 40,000 hours to half brightness
Agency approvals	UL/cUL (*recognized component), FCC, CE, TUV, EN60950

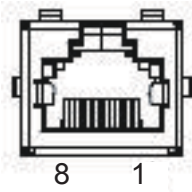
Speakers (internal)	One-watt/channel speakers in display head
User controls	Side: Power and user controls with lockout function for public use
Mounting options	75 mm VESA mount
Other features	Removable base Fanless Energy save mode (less than 2 watts) Touchscreen sealed to bezel and LCD Security lock receptacle
Peripheral Options and Upgrades	May vary

COM1, Connector(RS232 Mode)



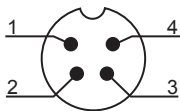
Pin #	Signal Name
shell	Ground
1	DCD
2	RXD
3	TXD
4	DTR
5	signal ground
6	DSR
7	RTS
8	CTS
9	RI

RJ45 LAN connector Pin Definition



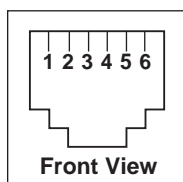
Pin #	Signal Name
1	TD+
2	TD-
3	RD+
6	RD-

Power Input Pin Definition








Pin #	Signal Name
1	+12V
2	Ground
3	Ground
4	+12V

Cash Drawer Port Signal Definition and Control



Pin #	Signal Name
1	Frame Ground
2	CD 1 Drawer kick-out drive signal 1
3	SW (+) connected on the side of the open/closed detection switch on the drawer
4	L (+) +12V DC for drawer kick-out supplied
5	CD 2 Drawer kick-out drive signal 2
6	(-) Ground

How to Use the OSD Menu

Icon	key Name
	Menu
	Up
	Down
	Enter
	Power

1. Press the “MENU” button to pop up the “on-screen menu” and press “Up” or “Down” button to select among the six functions in the main menu.
2. Choose the adjustment items by pressing the “Enter ” button.
3. Adjust the value of the adjustment items by pressing the “Up” or “Down” button.
4. With the OSD menu on screen, press “ Menu” button to return main menu or exit OSD.
5. The OSD menu will automatically close, if you have left it idle for a pre-set time.
6. To Lock the OSD / Power menu buttons, please follow the instructions below.
(Please note: the monitor has to be turned ON with a valid signal preset)
 - (a). Press “Menu” key , the OSD menu will pops upon display.
 - (b.) Press and hold the “Menu” key again with the OSD menu on the screen, the OSD menu will disappear. Then press the "Power" key 1 time while the menu key is still being pressed. The “Lock/Unlock” menu will appear for 3 seconds.
 - (c.) Use the "Enter" key to select OSD or Power setting then set at “Lock” by pushing the "UP" or "Down" button.
 - (d.) When the "UP" or "Down" button is released, the previous setting will be saved and exit the “Lock/Unlock” menu automatically.
7. To Unlock the OSD / Power menu buttons, please follow the instructions below.
(Please note: the monitor has to be turned ON with a valid signal preset)
 - (a) Press and hold the “Menu” key then press the “Power” key simultaneously, the “Lock/Unlock” menu will appear for 3 seconds.
 - (b.) Use the "Enter" key to select OSD or Power setting then set at “Unlock” by pushing the "UP" or "Down" button.
 - (c.) When the "UP" or "Down" button is released, the previous setting will be saved and exit the “Lock/Unlock” menu automatically.

Please note:

- a. When the OSD Lock function is selected, this indicates that all the buttons except “power” button are now disabled.
- b. When the Power Lock function is selected, this indicates that the power key is disabled; user can not to turn off the monitor by "Power" key.

On-Screen Display Menus

Main OSD Menu:

ITEM	Content
CONTRAST	Adjusts the maximum luminance level of the computer.
BRIGHTNESS	Adjusts the backlight of the computer.
OSD LEFT/RIGHT	Adjusts the OSD menu screen position left or right.
OSD UP/DOWN	Adjusts the OSD menu screen position up or down.
OSD TIME OUT	Adjusts the time for OSD auto-disappear after menu on.
FACTORY RESET	Restores original factory settings.
OSD LANGUAGE	Select the language used for the OSD menu from among English, French, Japanese, Deutsch, Spanish, Italian, Traditional Chinese and Simplified Chinese
RGB	Sets the color temperature.9300, 6500, 5500, 7500, User.
Audio	The volume is adjusted and mute can set.
Mute	To turn ON/OFF the sound.

Appendix

Troubleshooting

If you are experiencing trouble with the LCD display, refer to the following. If the problem persists, please contact your local dealer or our service center.

Problem: No image appears on screen.

- ▶ Check that all the I/O and power connectors are correctly and well connected described in the "Installation" section.
- ▶ Make sure the pins of the connectors are not crooked or broken.

Problem: Partial Image or incorrectly displayed image.

- ▶ Check to see if the resolution of your computer is higher than that of the LCD display.
- ▶ Reconfigure the resolution of your computer to make it less than or equal to 1024 x 768.

Warning Signal

If you see warning messages on your LCD screen, this means that the LCD display cannot receive a clean signal from the computer graphics card.

There may be three sources for this problem. Please check the cable connections or contact your local dealer or our service center for more information.

No Signal

This message means that the LCD Display has been powered on but it cannot receive any signal from the computer graphics card. Check all the power switches, power cables, and VGA signal cable.

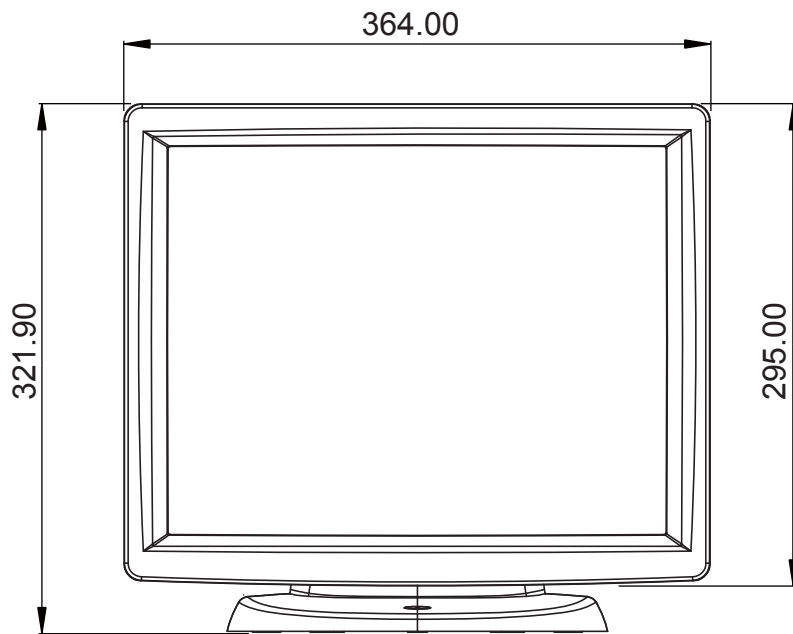
Going to Sleep

The LCD display is under the power saving mode. In addition, the LCD display will enter power saving mode when experiencing a sudden signal disconnecting problem. The monitor can be activated by pressing any keyboard, triggering the mouse or touching the screen.

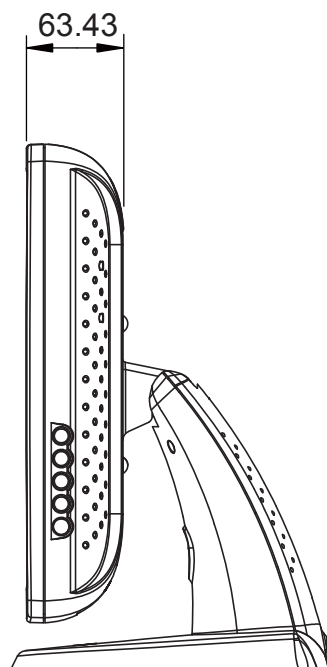
Out of Range

This message means that the signal of the computer graphic card is not compatible with the LCD display. When the signal is not included in the "Video Modes" list we have listed in the Appendices of this manual, the LCD computer will display this message.

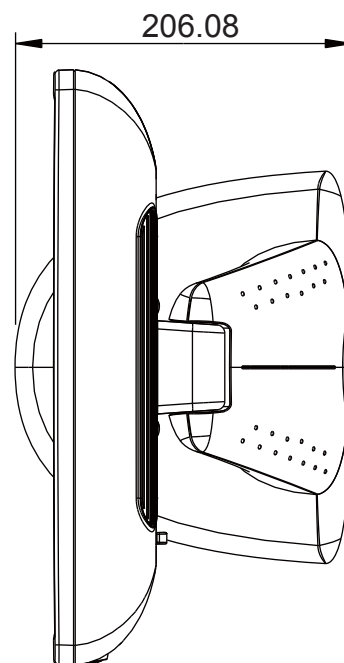
Product Dimensions



Front View



Side View



Top View

Compatibility Modes

Mode	Resolution	H-Frequency (KHz)	V-Frequency (Hz)
VGA	720 x 400	31.47	70
VGA	640 x 480	31.47	60
VESA	800 x 600	37.88	60
VESA	1024 x 768	48.36	60

Product Registration and Technical Support

Register Your Planar Products Today

Thank you for choosing Planar. To assure you receive all the benefits of your Planar product and services, register your Planar product today. Visit our website to register your product at http://www.planar.com/support/product_registration.html.

Cables, Replacement Lamps, Accessories

To find cables, replacement lamps and accessories for your Planar projector, LCD monitor, touch screen or other Planar products visit our online store at www.PlanarOnline.com or find other stores who carry Planar products at <http://www.planar.com/howtobuy>.

Technical Support

Visit Planar at <http://www.planar.com/support> for product registration, operations manuals, touch screen drivers, warranty information and access to Planar's Technical Library for online troubleshooting.

To speak with Planar Customer Support please have you model and serial number available and dial:

Planar Support

Tel: 1-866-PLANAR1 (866-752-6271) or +1 503-748-5799 outside the US.

Hours: 24 hours a day, 7 days a week.

Toll or long distance charges may apply.

Planar Systems, Inc.

Customer Service

24x7 Online Technical Support: <http://www.planar.com/support>

1195 NW Compton Drive

Beaverton, OR 97006-1992

Tel: 1-866-PLANAR1 (866-752-6271) or +1 503-748-5799 outside the United States.

Hours: 24 hours a day, 7 days a week

© 2009 **Planar Systems, Inc. 11/09** Planar is a registered trademark of Planar Systems, Inc.

Other brands and names are the property of their respective owners.

Technical information in this document is subject to change without notice.

020-1025-00 Rev B
820450045102