

Planar® ContentSmart™ Media Player MP-3450

Quick Start Guide

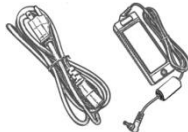
This quick start guide provides a walkthrough of the set up process. For complete documentation and product manual refer to the CD or please visit:

www.PlanarDigitalSignage.com/ContentSmart

Box Contents



Media Player Unit



AC Power Adapter
12V DC output



Standard 3.5 mm to
RCA AV Cables



Ethernet Cable



Documentation
CD



Wi-Fi
Antenna



Quick Start Guide
(this guide)



CF card cover/remover
(pre-installed on unit)



RS-232 adapter

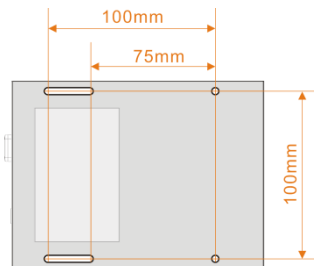
USB Keyboard required
(not included)

A USB keyboard is required to change system settings.

Mounting and Installation

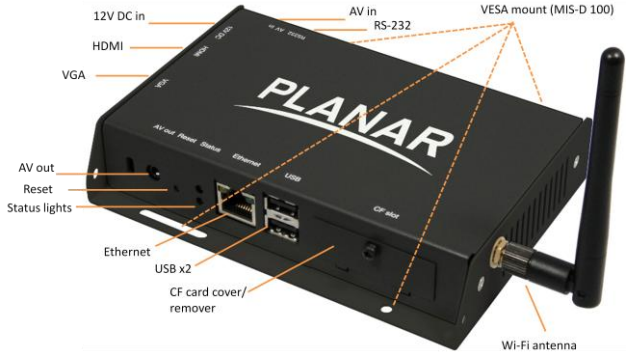
The Planar® ContentSmart™ MP-3450 media player can be attached to mounting posts on the back of screens or inside cabinetry with the built-in VESA MIS-D100 (100mmx100mm) compatible mounting flange.

ATTACH the wireless antenna as shown. Screw antenna clockwise onto the post.



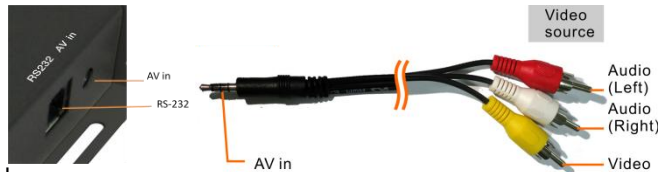
Bottom view

Port connections




Video input connection

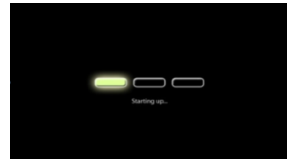
The **AV in** port lets you attach TV tuners, live video camera signals, pre-recorded videos, and more via the 3.5mm composite video/audio cable. **NTSC/PAL** mode is selected automatically. Also refer to your **software documentation** to enable display.



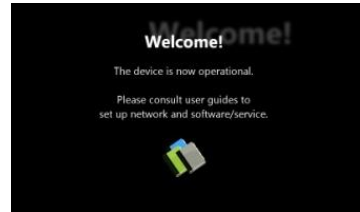
System setup

- 1 ATTACH** a video cable (either *VGA* or *HDMI*) to your display and the appropriate port on the media player.
 - When using *VGA*, your display must support XGA (1024x768) resolution or greater. Connect audio using the included AV cable.
 - When using *HDMI*, audio and video are sent over a single HDMI cable.
- 2 ATTACH** the AC power adapter to the media player.
 - Immediately, the  green *Status LED* on the main unit lights up.

- 3 SET** your display to the correct input mode (VGA/HDMI)
 → You should see the player boot up screen.

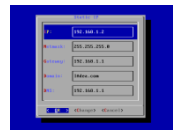


- 4 WAIT** while player boots up (up to 60 seconds)
 → once you see “Welcome” on screen, the unit is ready for content update or menu configuration.



- 5 PLUG IN** a USB keyboard to the unit’s USB port
 → the player will enter the *graphical menu system* in approx. 30 sec.

- 6 NAVIGATE** the menus using your keyboard arrows (up), (down), (left), (right) to move the selection, (Space bar) to select, (Enter) to confirm, and (ESC) to cancel
 → *find and set the correct time/date AND time zone.*



IMPORTANT: time zone must be set correctly in the menus or via management software for scheduled playback.
 → (Wireless model only) Using the USB keyboard, select a wireless network and provide security information to connect to your wireless access point.
 → (OPTIONAL) *Set a Password* in the menus to prevent unauthorized changes. **IMPORTANT:** setting a password will hide the menus. To re-enter the menu, press CTRL-ALT-DEL and enter the password. If you forget the password, see *Reset player to factory defaults*.

- 7 SAVE** settings and exit the menu, then **REMOVE** the USB keyboard.
 → The player will reboot with new settings in place. Settings are now retained even if you remove the power.
 → For advanced player configuration, such as static IP, proxy server, time server, display option, and security settings, visit:
www.PlanarDigitalSignage.com/ContentSmart for more information.

Content Management

Please consult the software documentation for information specific to your management solution.

Troubleshooting

Why is there no video output on composite video connectors?

The player outputs video over HDMI and VGA by default. To switch to composite video output, connect a HDMI or VGA display, then select PAL or NTSC output from the menu system (see System setup).

If both Ethernet & Wi-Fi are available, which connection will take priority?

If both connections are available, Ethernet will take priority for data transfer. When Ethernet is not available or disconnected, system will try to use Wi-Fi connection.

How do I remove an inserted CF card?

You can install a CF card to replace the 4GB internal memory. The card slot is located behind a metal plate (the *CF card cover/remover*). To remove an inserted CF card, remove the screw and use the *CF card cover/remover's* metal hooks to pull out the card.



Reset player to factory defaults

If modifying settings cause unintended results or if you have forgotten your password please reset the player. All stored content will also be removed.

1. Disconnect power cable from the player unit
2. Press and hold the RESET button
3. Connect the power cable while holding the RESET button until *status light flashes* (about 15 seconds)
4. Please wait while the system drive is being formatted

