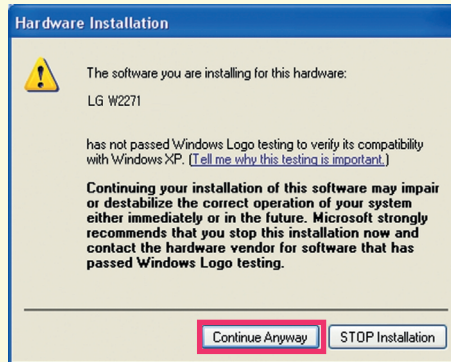


# Manual Installation of the Monitor Driver (Windows XP)

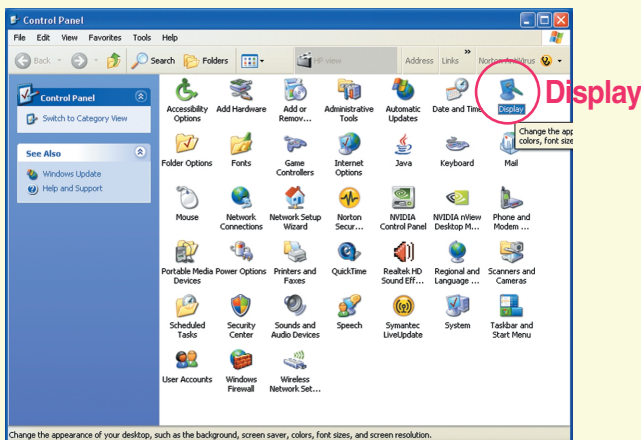
## Manual Installation Steps for Windows XP

### Important Notice

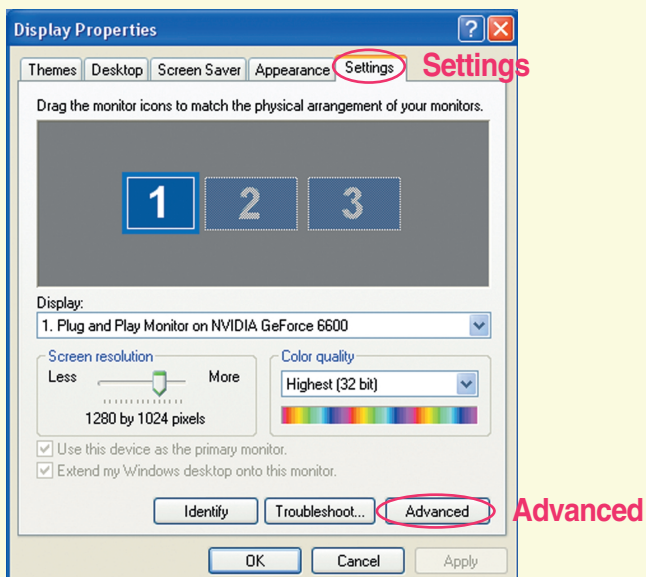
This message may appear several times during the installation of your monitor driver. Click **Continue Anyway** once or several times to continue (Windows XP). This action will not harm your monitor or system.



1. Click on **Start**, select **Settings**, then click **Control Panel**. Double click on **Display**.

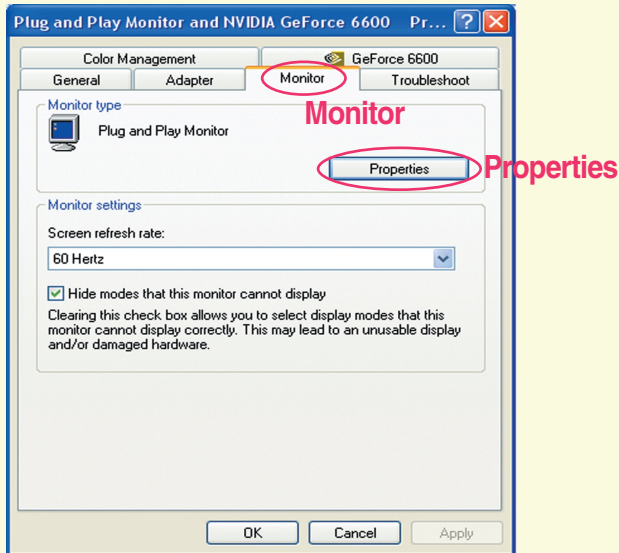


2. Select the **Settings** tab and Click on **Advanced**.

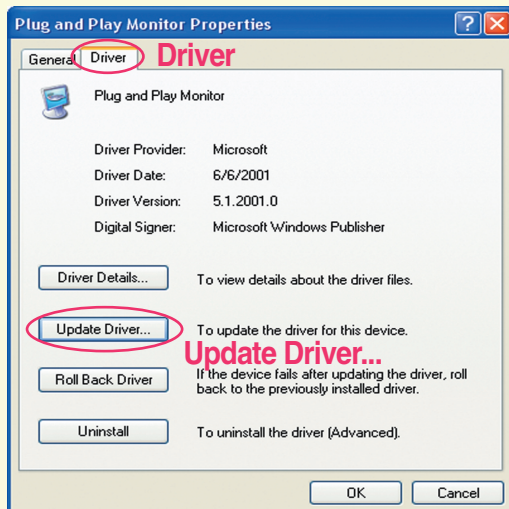


# Manual Installation of the Monitor Driver (Windows XP)

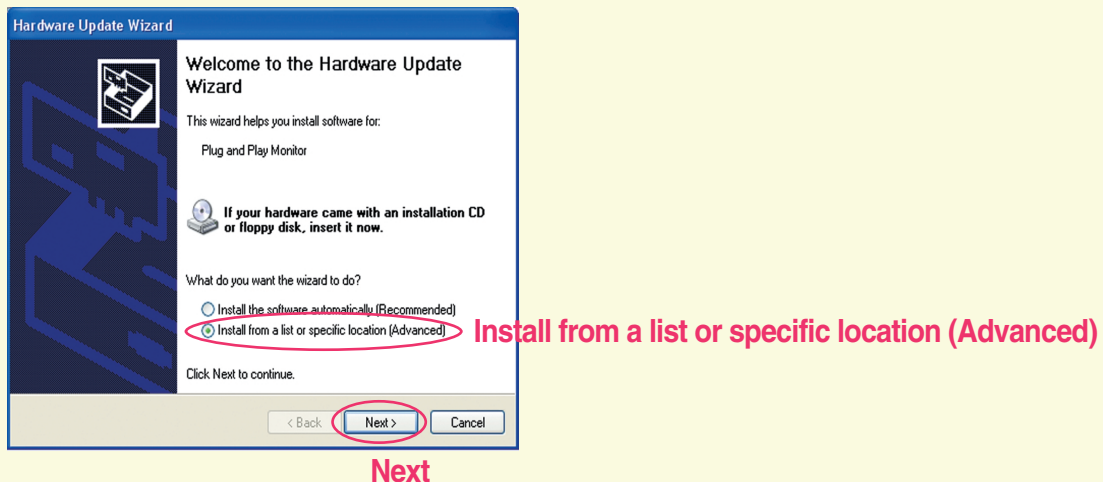
3. Select the **Monitor** tab and Click on **Properties**.



4. Select on **Driver** tab and Click on **Update Driver...**

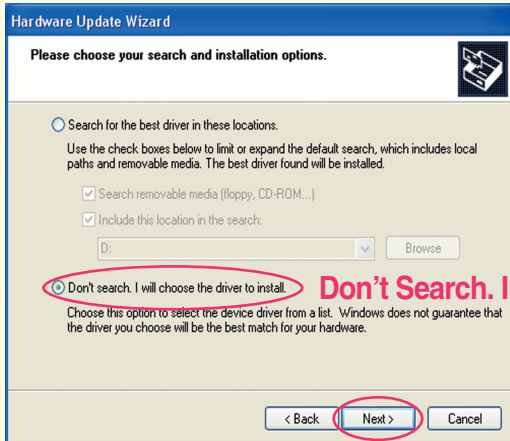


5. Select the **Install from a list or specific location (Advanced)** option and click on **Next**.



# Manual Installation of the Monitor Driver (Windows XP)

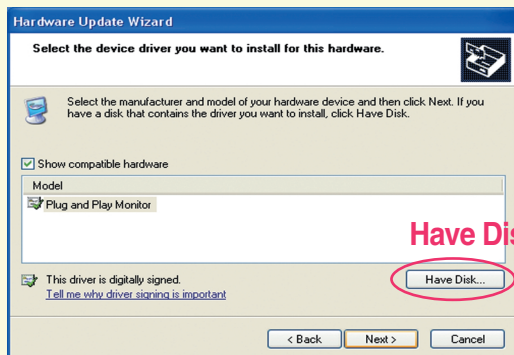
Select the **Don't Search. I will choose the driver to install** and Click on **Next**.



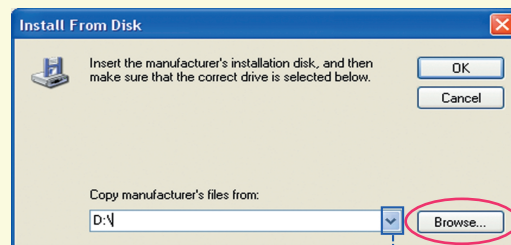
**Don't Search. I will choose the driver to install**

**Next**

Select the **Have Disk.....** and click on **Browse**.



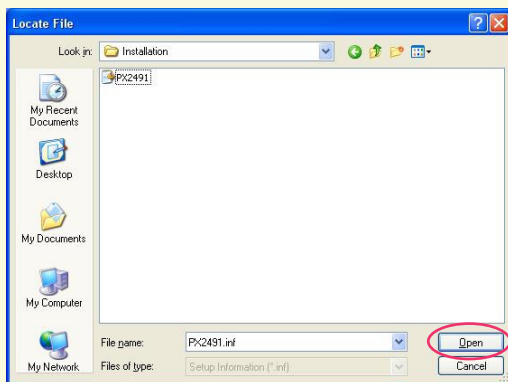
**Have Disk**



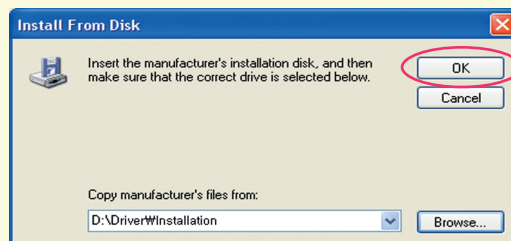
**Browse**

Using the  button, Select the correct drive.  
ex) Diskette → A:\(⚡),  
CD → D:\(⚡)Driver\⚡Installation(E:\...)

Select the driver file folder (e.g.: **D:\Driver\Installation**), select your monitor model (\*.inf), and click on **Open** and then **OK**.



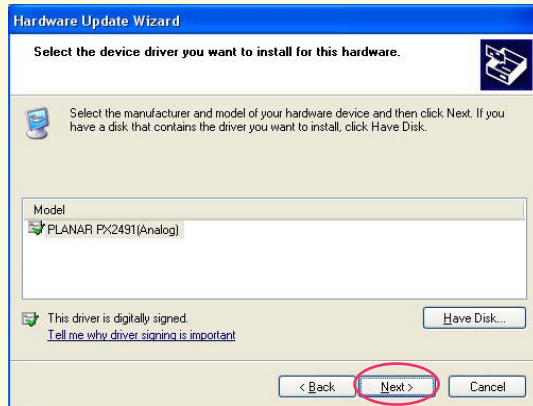
**Open**



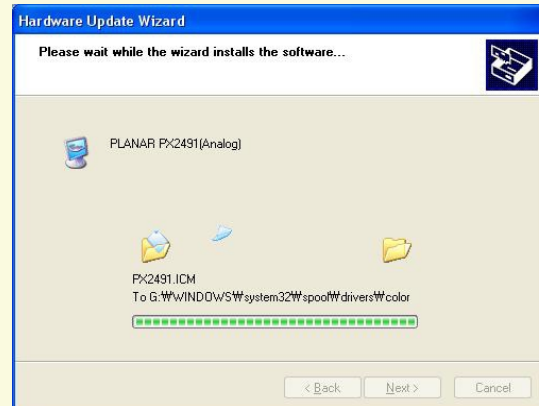
**OK**

# Manual Installation of the Monitor Driver (Windows XP)

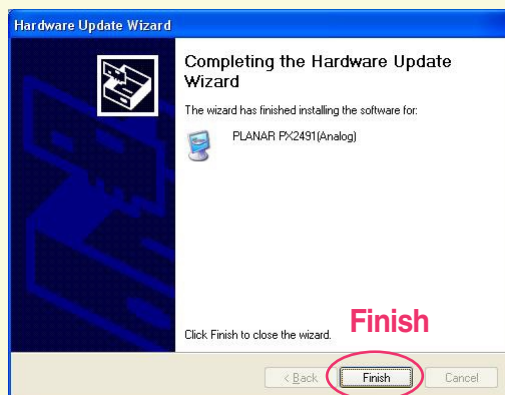
Check the model name and click on **Next**.



**Next**



Click on **Finish**.



**Finish**