

# Manual Installation of the Monitor Driver (Windows 7)

## Manual Installation Steps for Windows 7

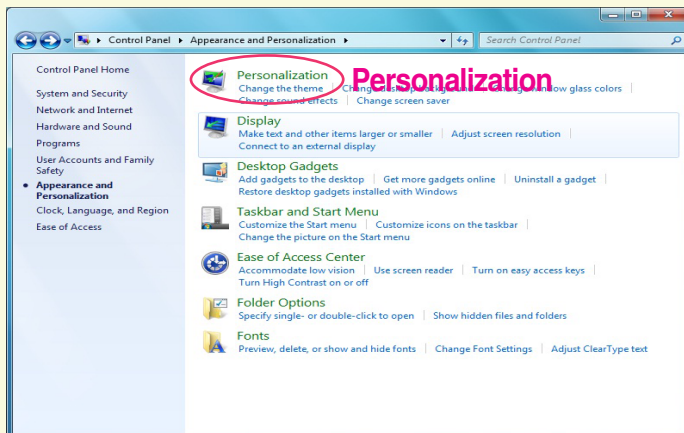
### Important Notice

This message may appear several times during the installation of your monitor driver. Click **Install this driver software anyway** to continue (Windows 7). This action will not harm your monitor or system.

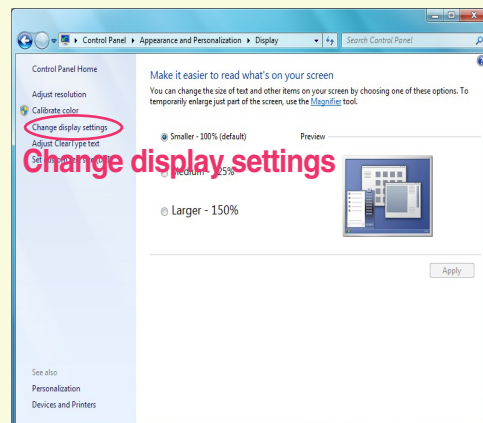
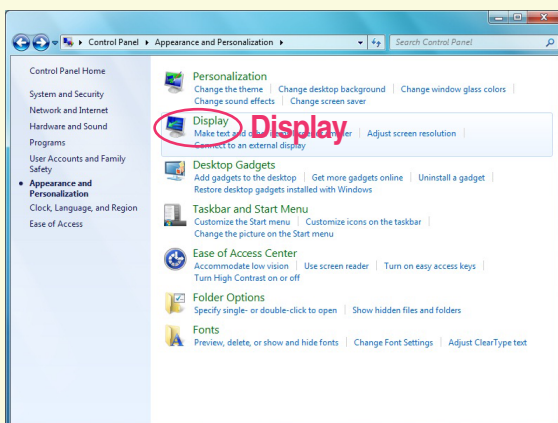


### 1. Click on (Start) and Control Panel.

Double click on **Appearance and Personalization** and then **Personalization**.

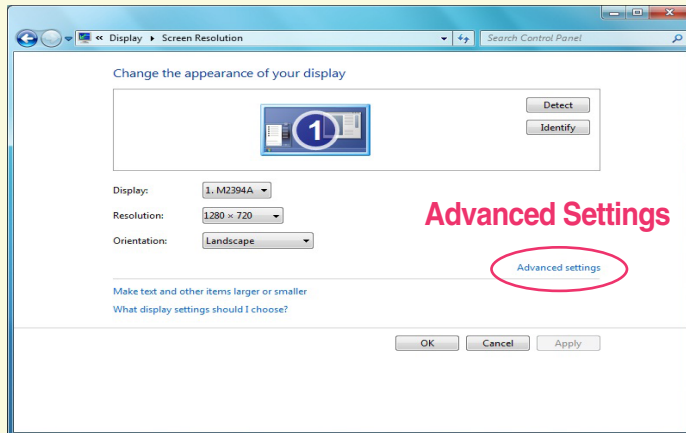


### 2. Select the **Display** and **Changes display settings**.



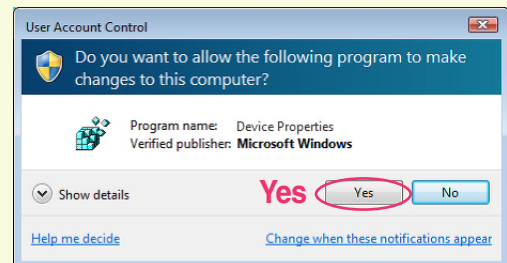
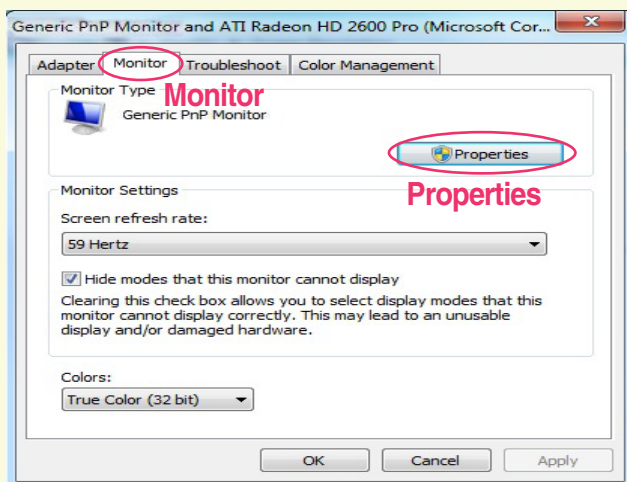
# Manual Installation of the Monitor Driver (Windows 7)

## 3. Click on **Advanced Settings**.

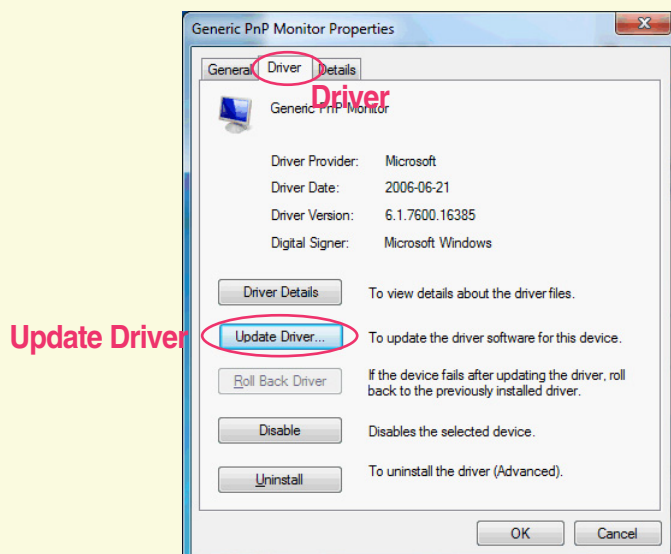


## 4. Select the **Monitor** tab and Click on **Properties**.

If the "Do you want to allow the following program to make changes to this computer?" window appears, click on **Yes**.

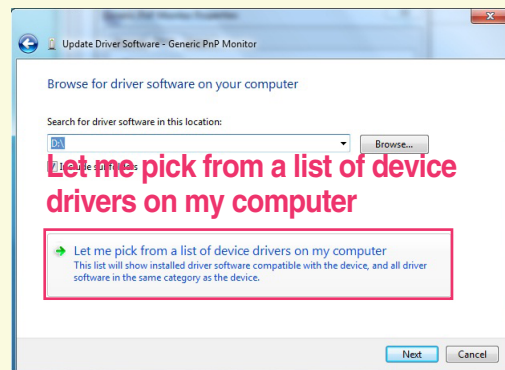
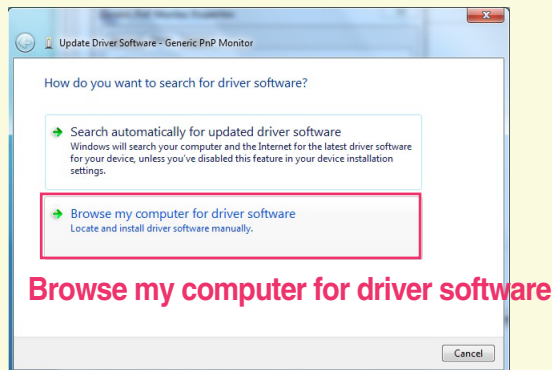


## 5. Click on **Driver** tab and Click on **Update Driver...**

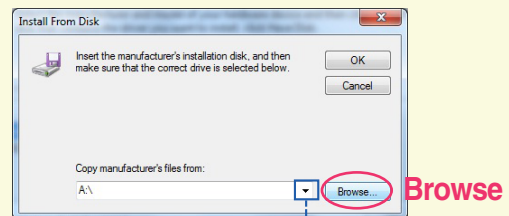
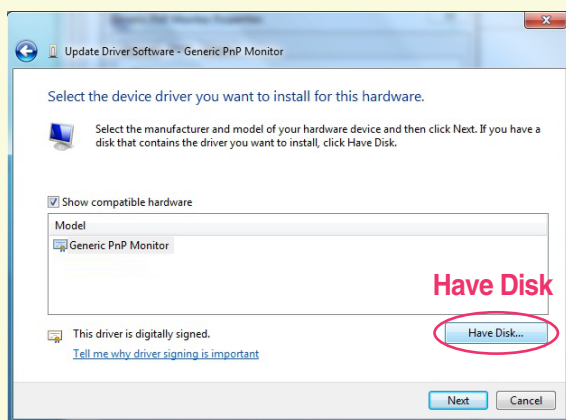


# Manual Installation of the Monitor Driver (Windows 7)

6. Select the **Browse my computer for driver software** option and click.  
→ Select the **Let me pick from a list of device drivers on my computer** option and click.

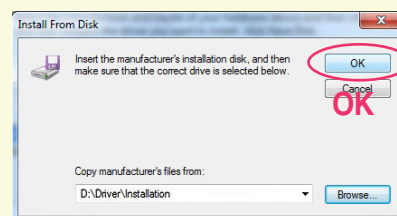
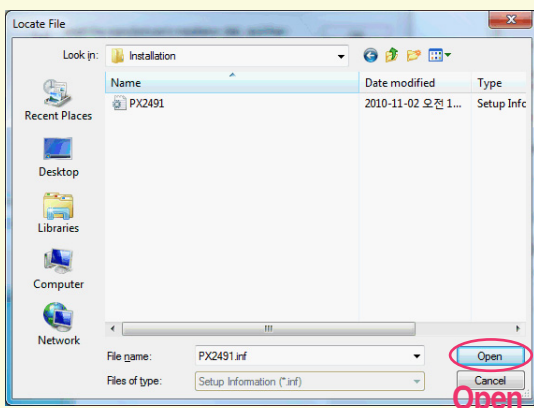


Select the **Have Disk...** and click on **Browse**.



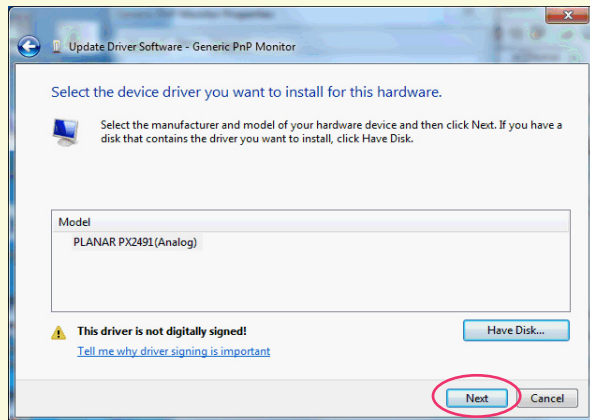
Using the  button, Select the correct drive.  
ex) Diskette → A:\(⌘),  
CD → D:\Driver\Installation(E:\...)

Select the driver file folder (e.g.: **D:\Driver\Installation**), select your monitor model (\*.inf), and click on **Open** and then **OK**.



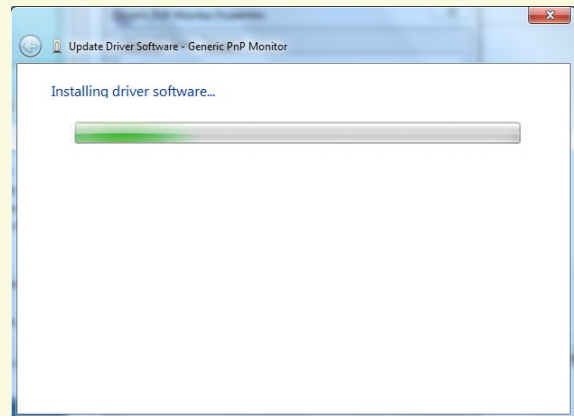
# Manual Installation of the Monitor Driver (Windows 7)

Check the model name and click on **Next**.

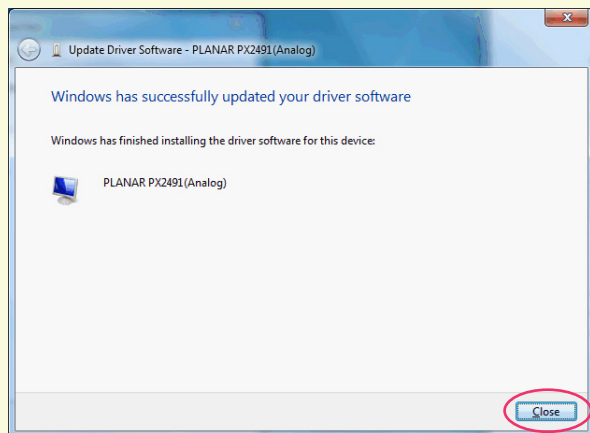


**Next**

The driver installation starts.



Click on **Close**.



**Close**