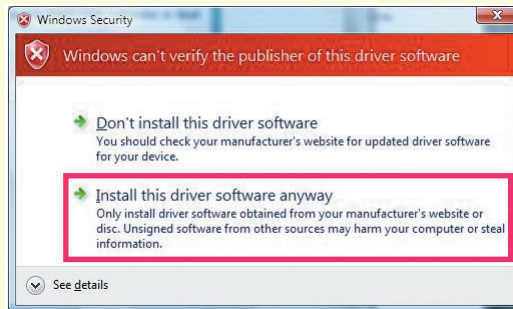


Manual Installation of the Monitor Driver (Windows VISTA)

Manual Installation Steps for Windows Vista

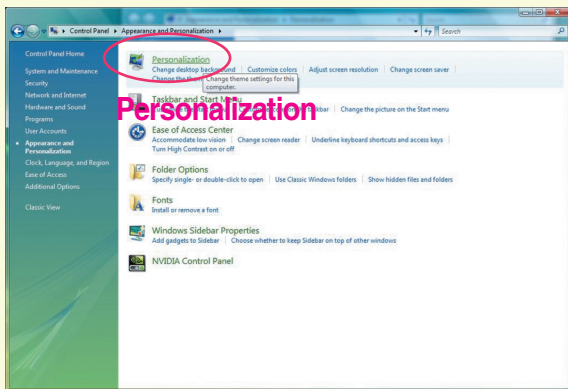
Important Notice

This message may appear several times during the installation of your monitor driver. Click **Install this driver software anyway** to continue (Windows Vista). This action will not harm your monitor or system.

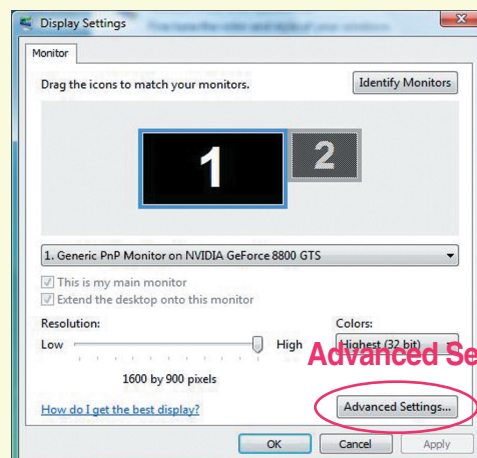
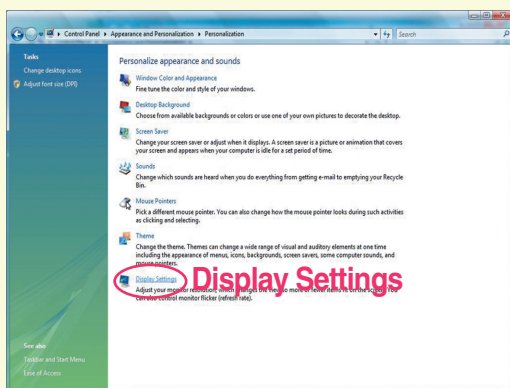


1. Click on (Start) and Control Panel.

Double click on **Appearance and Personalization** and then **Personalization**.



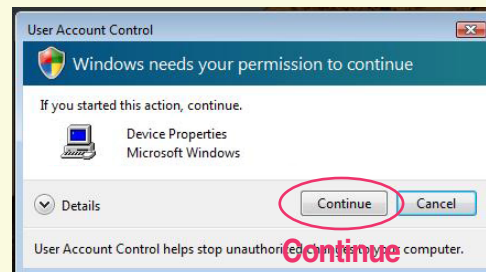
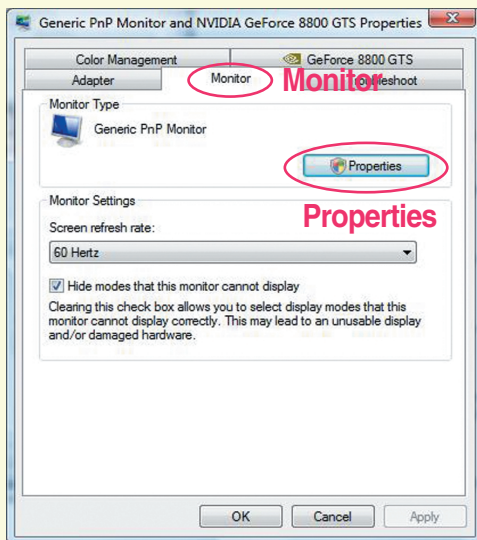
2. Select the **Display Settings** and Click on **Advanced Settings...**



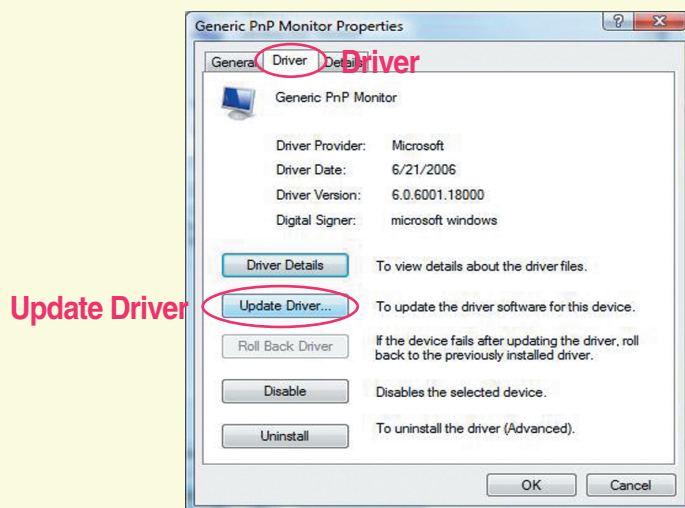
Manual Installation of the Monitor Driver (Windows VISTA)

3. Select the **Monitor** tab and Click on **Properties**.

If the "Windows needs your permission to continue" window appears, click on **Continue**.

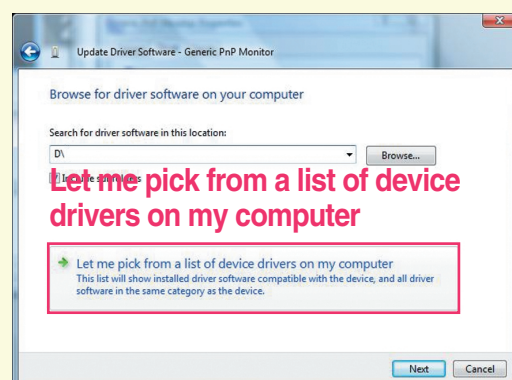
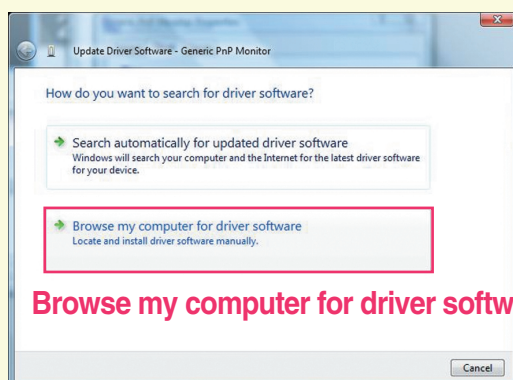


4. Click on **Driver** tab and Click on **Update Driver...**



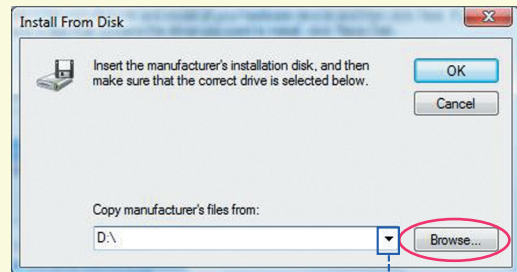
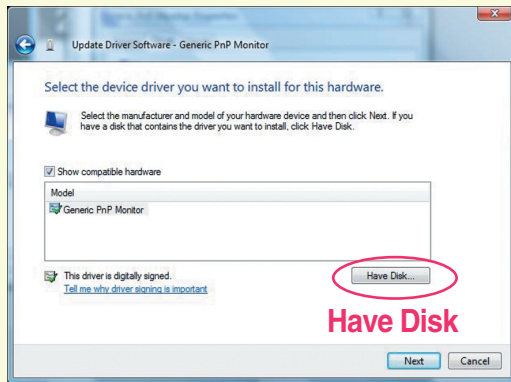
5. Select the **Browse my computer for driver software** option and click.

→ Select the **Let me pick from a list of device drivers on my computer** option and click.



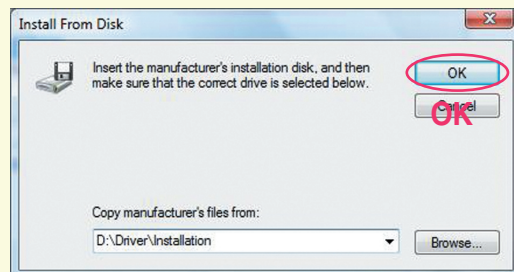
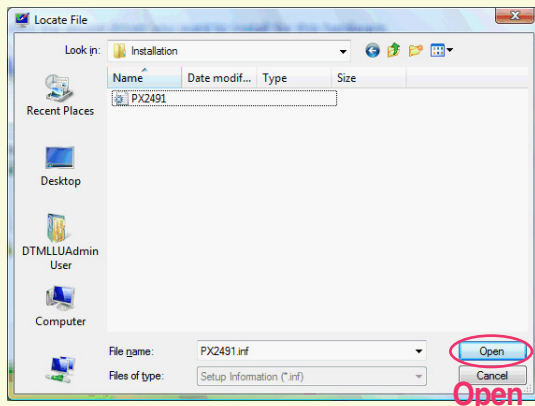
Manual Installation of the Monitor Driver (Windows VISTA)

Select the **Have Disk...** and click on **Browse**.

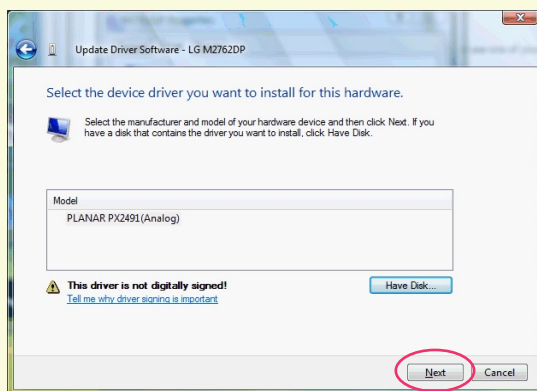


Using the button, Select the correct drive.
ex) Diskette → A:\(⚡),
CD → D:\Driver\Installation(E:\...)

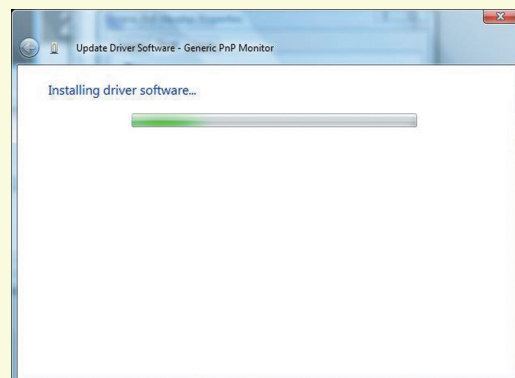
Select the driver file folder (e.g.: D:\Driver\Installation), select your monitor model (*.inf), and click on **Open** and then **OK**.



Check the model name and click on **Next**.

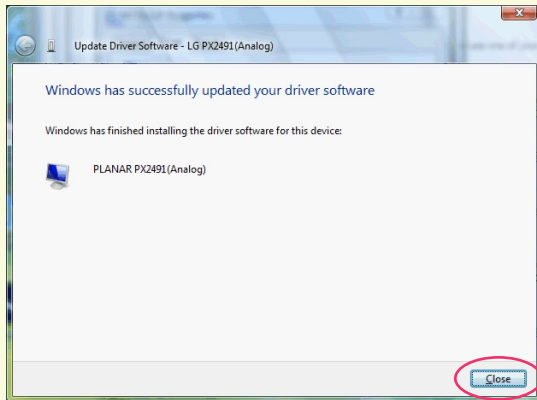


The driver installation starts.



Manual Installation of the Monitor Driver (Windows VISTA)

Click on **Close**.



Close