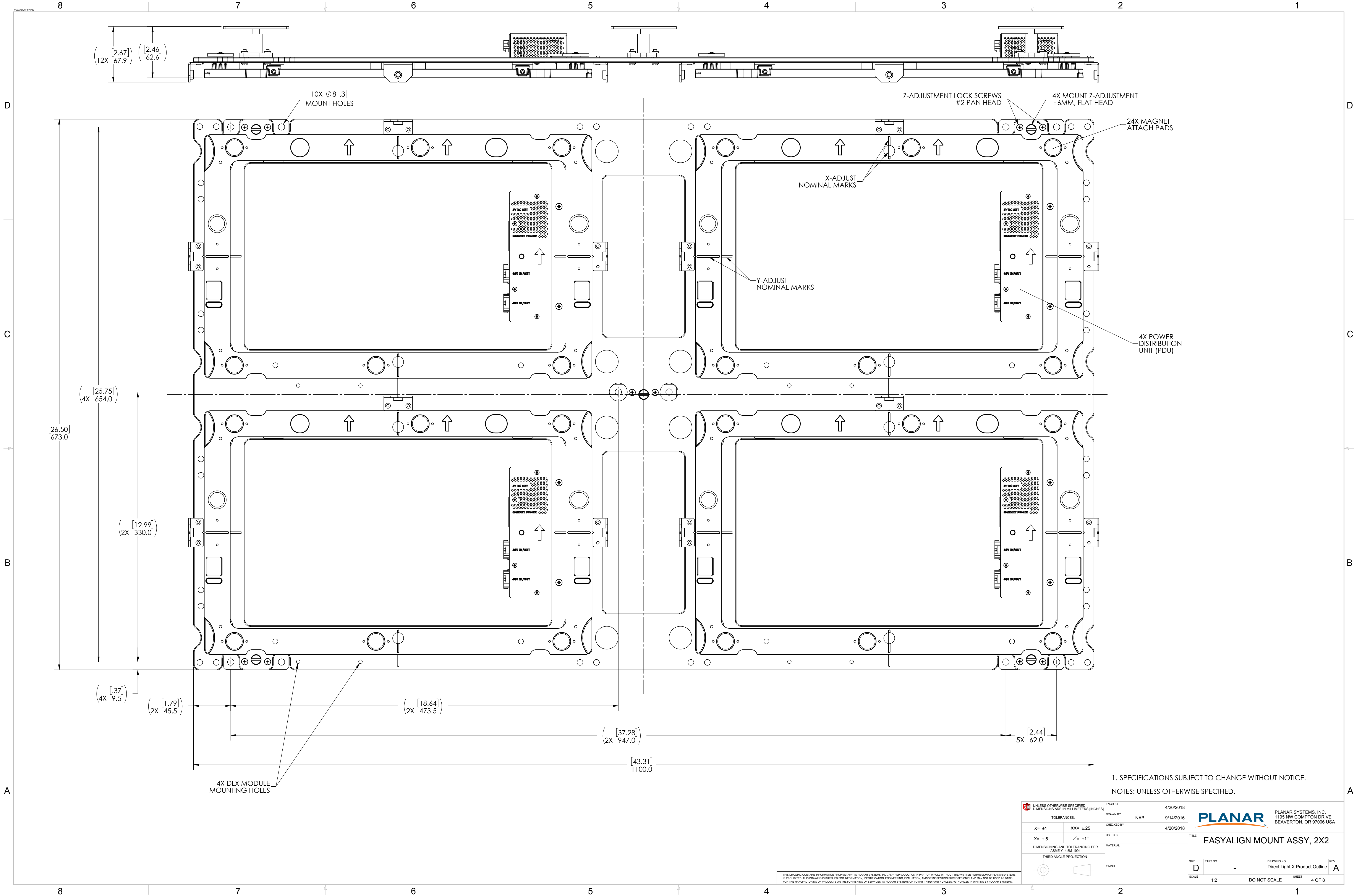


1. SPECIFICATIONS SUBJECT TO CHANGE WITHOUT NOTICE.



NOTES: UNLESS OTHERWISE SPECIFIED.

UNLESS OTHERWISE SPECIFIED DIMENSIONS ARE IN MILLIMETERS (INCHES)		ENGR BY	20 Apr 18	PLANAR PLANAR SYSTEMS, INC. 1195 NW COMPTON DRIVE BEAVERTON, OR 97006 USA	
TOLERANCES:		DRAWN BY	NAB		
X= ±1	XX= ±.25	CHECKED BY	20 Apr 18	TITLE EASYALIGN MOUNT ASSY, 2X1	
.X= ±.5	∠= ±1°	USED ON			
DIMENSIONING AND TOLERANCING PER ASME Y14.5M-1994		MATERIAL		SIZE	PART NO.
THIRD ANGLE PROJECTION		FINISH		D	-
				SCALE	1:2
				DO NOT SCALE	SHEET 3 OF 8

THIS DRAWING CONTAINS INFORMATION PROPRIETARY TO PLANAR SYSTEMS, INC. ANY REPRODUCTION IN PART OR WHOLE WITHOUT THE WRITTEN PERMISSION OF PLANAR SYSTEMS IS PROHIBITED. THIS DRAWING IS SUPPLIED FOR INFORMATION, IDENTIFICATION, ENGINEERING, EVALUATION, AND/OR INSPECTION PURPOSES ONLY AND MAY NOT BE USED AS BASIS FOR THE MANUFACTURING OF PRODUCTS OR THE FURNISHING OF SERVICES TO PLANAR SYSTEMS OR TO ANY THIRD PARTY UNLESS AUTHORIZED IN WRITING BY PLANAR SYSTEMS.



1. SPECIFICATIONS SUBJECT TO CHANGE WITHOUT NOTICE.
NOTES: UNLESS OTHERWISE SPECIFIED.

 UNLESS OTHERWISE SPECIFIED, DIMENSIONS ARE IN MILLIMETERS (INCHES)		ENG'D BY	4/20/2018	PLANAR SYSTEMS, INC. 1195 NW COMPTON DRIVE BEAVERTON, OR 97006 USA	
TOLERANCES:		DRAWN BY	NAB	TITLE EASYALIGN MOUNT ASSY, 2X2	
X= ±1	XX= ±.25	CHECKED BY	4/20/2018		
.X= ±.5	∠= ±1°	USED ON		REV A	
DIMENSIONING AND TOLERANCING PER ASME Y14.5M-1994		MATERIAL		DRAWING NO. Direct Light X Product Outline	
THIRD ANGLE PROJECTION		FINISH		SHEET 4 OF 8	
		SCALE 1:2 DO NOT SCALE			

THIS DRAWING CONTAINS INFORMATION PROPRIETARY TO PLANAR SYSTEMS, INC. ANY REPRODUCTION IN PART OR WHOLE WITHOUT THE WRITTEN PERMISSION OF PLANAR SYSTEMS IS PROHIBITED. THIS DRAWING IS SUPPLIED FOR INFORMATION, IDENTIFICATION, ENGINEERING, EVALUATION, AND/OR INSPECTION PURPOSES ONLY AND MAY NOT BE USED AS BASIS FOR THE MANUFACTURING OF PRODUCTS OR THE FURNISHING OF SERVICES TO PLANAR SYSTEMS OR TO ANY THIRD PARTY UNLESS AUTHORIZED IN WRITING BY PLANAR SYSTEMS.

230-018-02 REV B

MOUNT ASSEMBLY WITH FOUR 2X2 MOUNTS

8 7 6 5 4 3 2 1

D

C

B

A

8 7 6 5 4 3 2 1

1. SPECIFICATIONS SUBJECT TO CHANGE WITHOUT NOTICE.

NOTES: UNLESS OTHERWISE SPECIFIED.

UNLESS OTHERWISE SPECIFIED, DIMENSIONS ARE IN MILLIMETERS (INCHES)

TOLERANCES:

X= ±1	XX= ±25
X= ±5	∠= ±1°

DIMENSIONING AND TOLERANCING PER ASME Y14.5M-1994

THIRD ANGLE PROJECTION

ENG BY

DRAWN BY

CHECKED BY

USED ON

MATERIAL

FINISH

SCALE

DO NOT SCALE

SHEET

5 OF 8

PLANAR

PLANAR SYSTEMS, INC.
1195 NW COMPTON DRIVE
BEAVERTON, OR 97006 USA

TITLE

DIRECT LIGHT X
FOUR 2X2 MOUNT ASSEMBLY

DRAWING NO.

Direct Light X Product Outline

REV

A

THIS DRAWING CONTAINS INFORMATION PROPRIETARY TO PLANAR SYSTEMS, INC. ANY REPRODUCTION IN PART OR WHOLE WITHOUT THE WRITTEN PERMISSION OF PLANAR SYSTEMS IS PROHIBITED. THIS DRAWING IS SUPPLIED FOR INFORMATION, IDENTIFICATION, ENGINEERING EVALUATION, AND/OR INSPECTION PURPOSES ONLY AND MAY NOT BE USED AS BASIS FOR THE MANUFACTURING OF PRODUCTS OR THE FURNISHING OF SERVICES TO PLANAR SYSTEMS OR TO ANY THIRD PARTY UNLESS AUTHORIZED IN WRITING BY PLANAR SYSTEMS.

HORIZONTAL LINK BRACKET LOCATIONS
USE M5X0.8 PHPH SCREWS (4 EACH)
MINIMUM LENGTH 10MM

VERTICAL LINK BRACKET LOCATIONS
USE M5X0.8 PHPH SCREWS (4 EACH)
MINIMUM LENGTH 10MM

DISPLAY OUTLINE

[1.97]
50.0

[.04]
1.0

[53.07]
1348.0

[52.32]
(8X 1329.0)

[39.57]
(4X 1005.0)

[12.99]
(4X 330.0)

[.37]
(8X 9.5)

[1.79]
(4X 45.5)

[18.64]
(2X 473.5)




[37.28]
(4X 947.0)

[65.89]
(2X 1673.5)

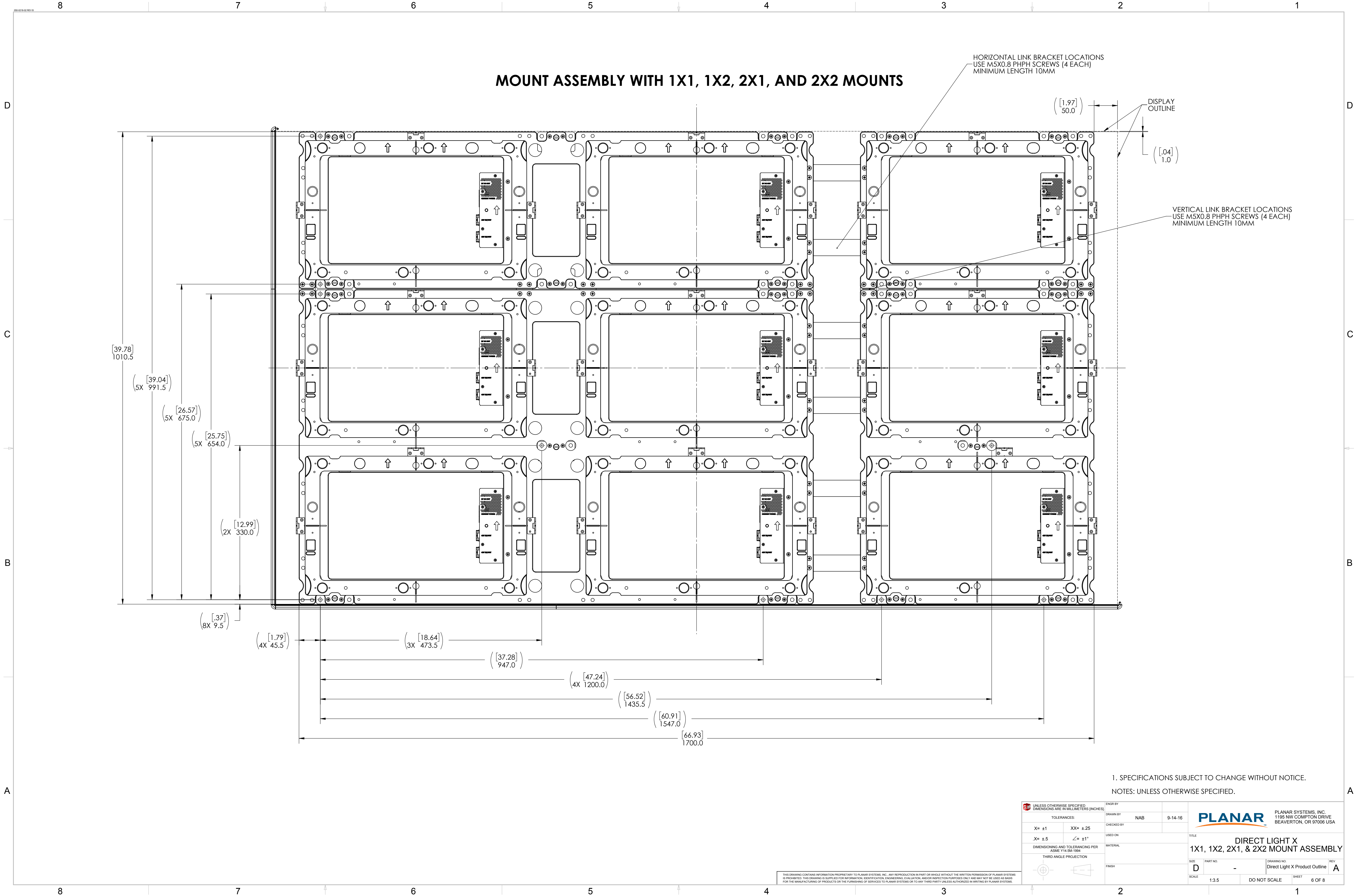
[84.53]
(4X 2147.0)

[90.55]
2300.0

NOTES: UNLESS OTHERWISE SPECIFIED.

<div></div> <div>UNLESS OTHERWISE SPECIFIED DIMENSIONS ARE IN MILLIMETERS [INCHES]</div>	TOLERANCES:		DRAWN BY NAB	9-14-16	<div></div> <div>PLANAR SYSTEMS, INC. 1195 NW COMPTON DRIVE BEAVERTON, OR 97006 USA</div>	
	X= ±1 XX= ±25 X= ±5 ∠= ±1°		CHECKED BY			
	DIMENSIONING AND TOLERANCING PER ASME Y14.5M-1994		USED ON			
	THIRD ANGLE PROJECTION		MATERIAL			
<div></div>			FINISH			

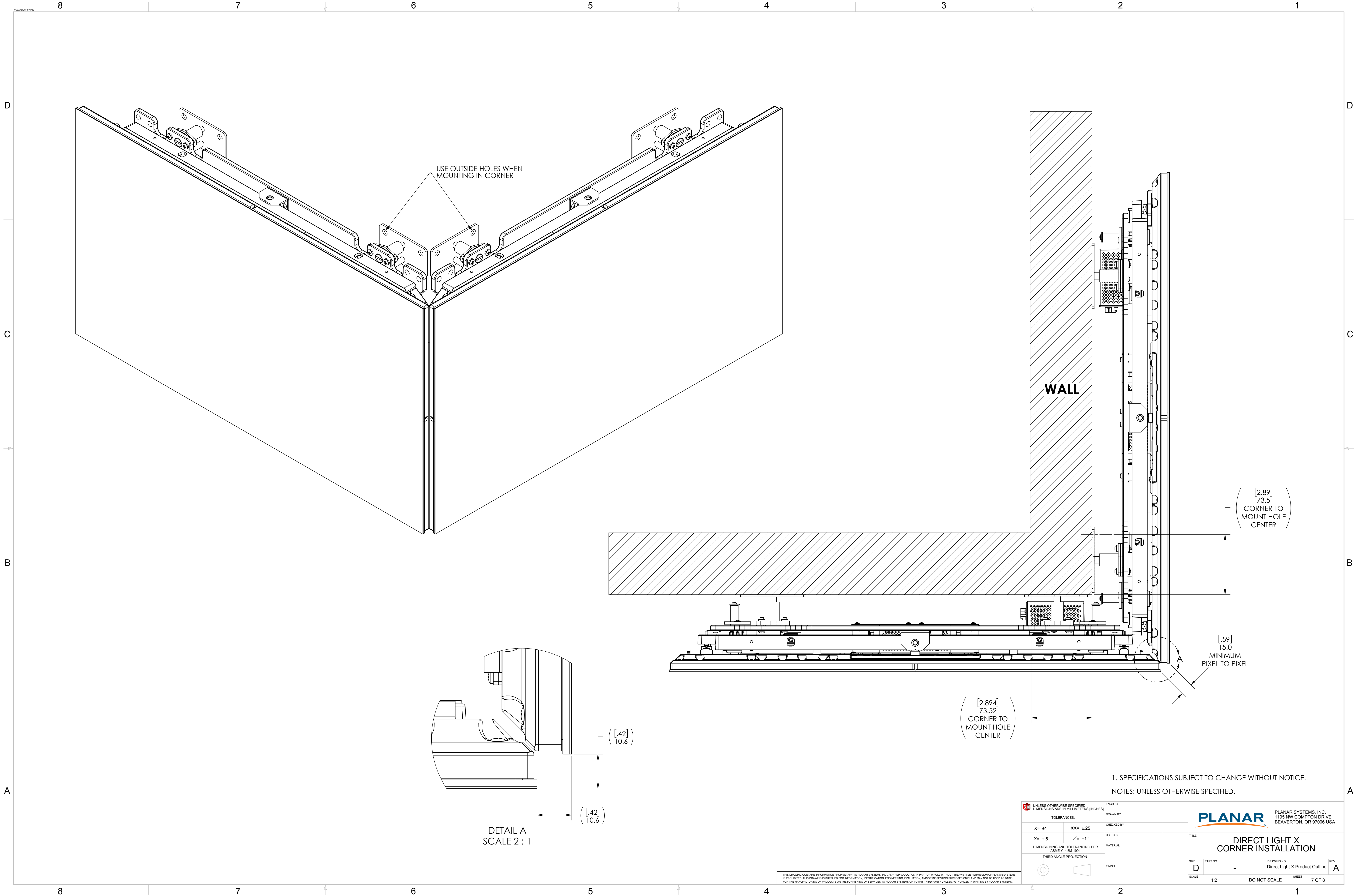
THIS DRAWING CONTAINS INFORMATION PROPRIETARY TO PLANAR SYSTEMS, INC.. ANY REPRODUCTION IN PART OR WHOLE WITHOUT THE WRITTEN PERMISSION OF PLANAR SYSTEMS IS PROHIBITED. THIS DRAWING IS SUPPLIED FOR INFORMATION, IDENTIFICATION, ENGINEERING, EVALUATION, AND/OR INSPECTION PURPOSES ONLY AND MAY NOT BE USED AS BASIS FOR THE MANUFACTURING OF PRODUCTS OR THE FURNISHING OF SERVICES TO PLANAR SYSTEMS OR TO ANY THIRD PARTY UNLESS AUTHORIZED IN WRITING BY PLANAR SYSTEMS.

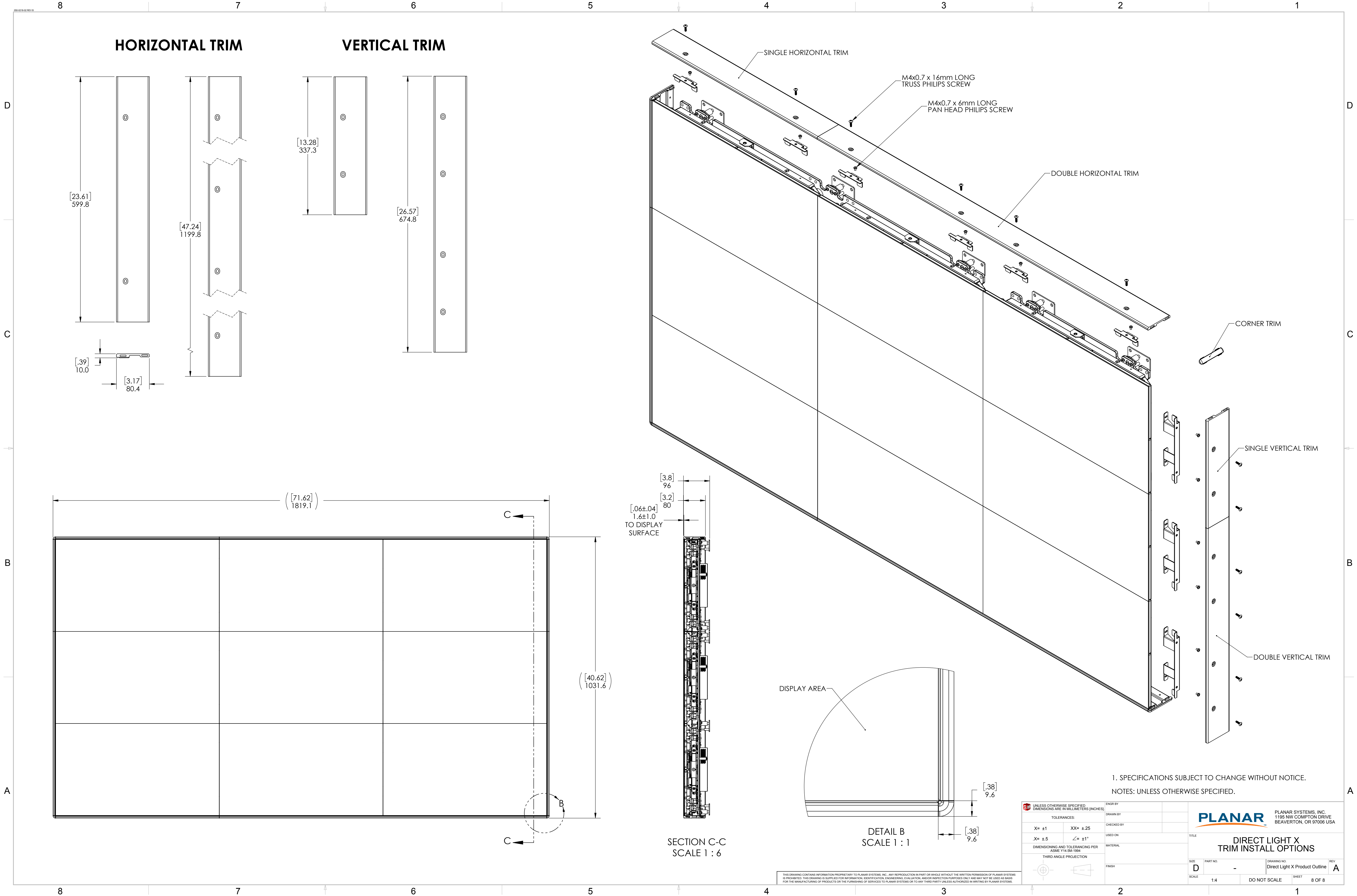


1. SPECIFICATIONS SUBJECT TO CHANGE WITHOUT NOTICE.
NOTES: UNLESS OTHERWISE SPECIFIED.

UNLESS OTHERWISE SPECIFIED DIMENSIONS ARE IN MILLIMETERS (INCHES)		ENGR BY	
TOLERANCES:		DRAWN BY	NAB
X= ±1	XX= ±.25	CHECKED BY	
.X= ±.5	∠= ±1°	USED ON	
DIMENSIONING AND TOLERANCING PER ASME Y14.5M-1994		MATERIAL	
THIRD ANGLE PROJECTION		FINISH	
TITLE		DRAWING NO.	REV
DIRECT LIGHT X 1X1, 1X2, 2X1, & 2X2 MOUNT ASSEMBLY		Direct Light X Product Outline	A
SIZE	PART NO.	SCALE	SHEET
D	-	1:3.5	6 OF 8

THIS DRAWING CONTAINS INFORMATION PROPRIETARY TO PLANAR SYSTEMS, INC. ANY REPRODUCTION IN PART OR WHOLE WITHOUT THE WRITTEN PERMISSION OF PLANAR SYSTEMS IS PROHIBITED. THIS DRAWING IS SUPPLIED FOR INFORMATION, IDENTIFICATION, ENGINEERING, EVALUATION, AND/OR INSPECTION PURPOSES ONLY AND MAY NOT BE USED AS BASIS FOR THE MANUFACTURING OF PRODUCTS OR THE FURNISHING OF SERVICES TO PLANAR SYSTEMS OR TO ANY THIRD PARTY UNLESS AUTHORIZED IN WRITING BY PLANAR SYSTEMS.





HORIZONTAL TRIM

VERTICAL TRIM

SINGLE HORIZONTAL TRIM

M4x0.7 x 16mm LONG
TRUSS PHILIPS SCREW

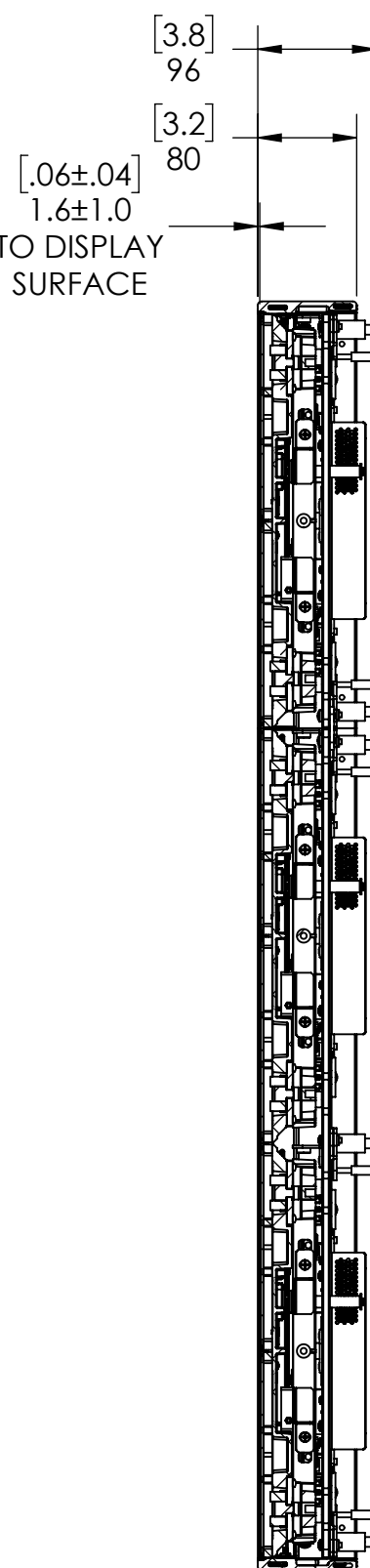
M4x0.7 x 6mm LONG
PAN HEAD PHILIPS SCREW

DOUBLE HORIZONTAL TRIM

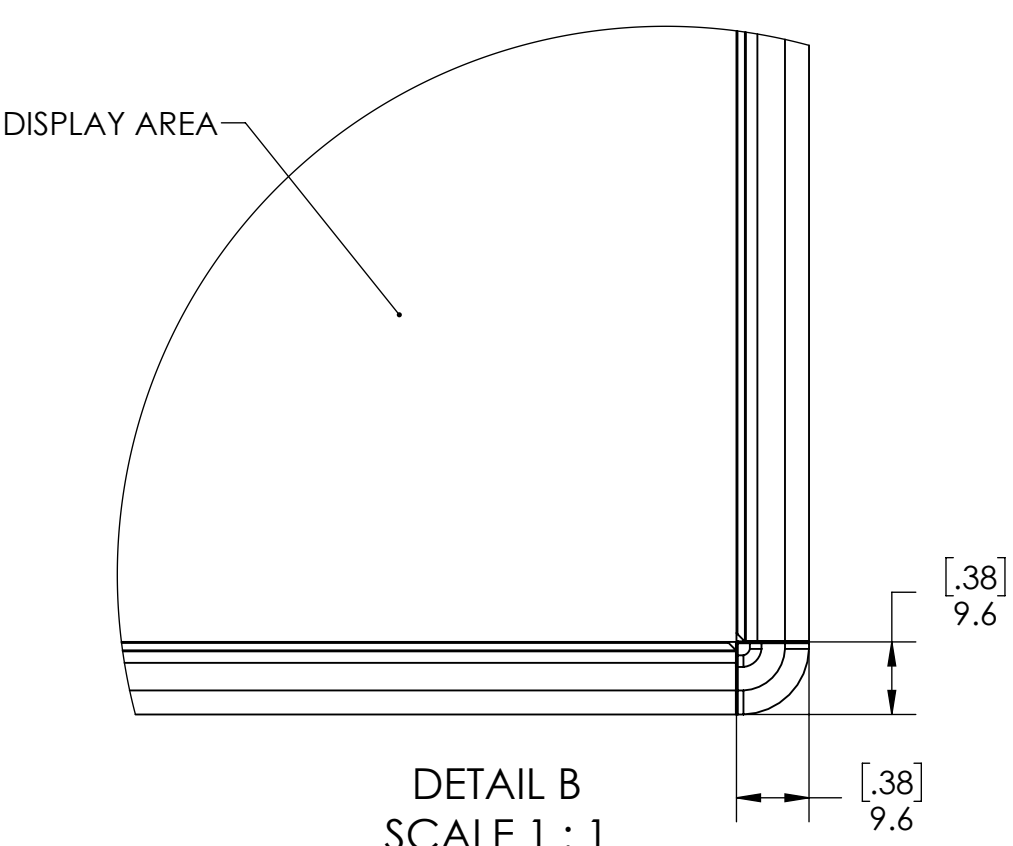
CORNER TRIM

SINGLE VERTICAL TRIM

DOUBLE VERTICAL TRIM



SECTION C-C
SCALE 1 : 6



DETAIL B
SCALE 1 : 1

1. SPECIFICATIONS SUBJECT TO CHANGE WITHOUT NOTICE.
NOTES: UNLESS OTHERWISE SPECIFIED.

UNLESS OTHERWISE SPECIFIED: DIMENSIONS ARE IN MILLIMETERS (INCHES)		ENG'D BY		PLANAR SYSTEMS, INC. 1195 NW COMPTON DRIVE BEAVERTON, OR 97006 USA	
TOLERANCES:		DRAWN BY		TITLE	
X= ±1	XX= ±.25	CHECKED BY		DIRECT LIGHT X TRIM INSTALL OPTIONS	
.X= ±.5	∠= ±1°	USED ON		SIZE PART NO.	
DIMENSIONING AND TOLERANCING PER ASME Y14.5M-1994		MATERIAL		DRAWING NO. Direct Light X Product Outline	
THIRD ANGLE PROJECTION		FINISH		REV	
SCALE		DO NOT SCALE		SHEET	
1:4				8 OF 8	