

LED VIDEO WALLS

Leyard® DirectLight® LED Video Wall System

The next-generation Leyard DirectLight LED Video Wall System is a family of seamless, ultra-fine pitch LED video wall displays. With a 27" cabinet, it features a 16:9 aspect ratio designed for Ultra HD resolution. Leyard DirectLight includes a mounting system for wall mounting and is fully front-serviceable. With an off-board design and redundant power supplies, Leyard DirectLight is less than 4-inches deep when installed.



- Available in 0.9, 1.2, 1.5 and 1.8mm pixel pitches – New 0.7 and 2.5mm pixel pitches added!
- Supports the closest viewing distances
- Front installation and serviceability
- Uses DirectLight® Remote Power Supply Modules
- Outstanding image quality
- Leyard® EasyAlign™ Mounting System included
- 16:9 aspect ratio for Full HD, 4K and 8K resolutions

Leyard® TWS Series

The Leyard TWS Series is a line of fine pitch LED video wall displays available in 0.9, 1.2, 1.5 and 1.8 millimeter pixel pitches. With a 27" cabinet, it features a 16:9 aspect ratio designed for Ultra HD resolution, is easy to handle and install, and easily produces curved video walls. The Leyard TWS Series combines outstanding image quality, low power consumption and a mission-critical design with redundant power and video options.



- Available in 0.9, 1.2, 1.5 and 1.8mm pixel pitches
- Supports the closest viewing distances
- Outstanding image quality
- Advanced design for reliability and ease of installation
- Mission-critical design with redundant power options
- Light-weight, magnesium alloy 27" cabinet
- 16:9 aspect ratio for Full HD, 4K and 8K resolutions

Leyard® LED MultiTouch

Leyard LED MultiTouch is the industry's first completely seamless interactive LED video wall. Using Leyard® PLTS™ (Pliable LED Touch Surface™) technology and a sleek framing system, Leyard LED MultiTouch provides a 32-point simultaneous interactive surface for a dynamic multi-user experience.



- Completely seamless interactive LED video wall
- Features Leyard PLTS technology, a specialized protective material that creates a smooth, durable and lightweight LED touch surface
- Enhanced visual performance with uniform color and brightness
- Anti-glare surface with no parallax effect
- Up to 32-point simultaneous touch capability
- Available in 108", 151" and 196" diagonal LED video walls
- Available in 0.9 and 1.2mm pixel pitches – New 0.7mm pixel pitch added!

Leyard® TWA Series

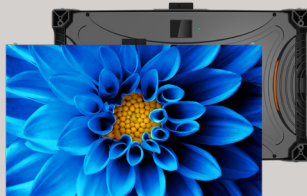
The Leyard TWA Series is a line of fine pitch LED video wall displays architected to support the highest pixel density and delivers benefits unique to its "flat panel" design including a 16:9 form factor, ease of installation and service, and outstanding flatness and uniformity. With a slim 54" cabinet and the finest pixel pitches, Leyard TWA Series delivers the pixel density and form-factor to match LCD and Rear Projection, but with a truly seamless video wall.



- Available in 0.9, 1.2, 1.4, 1.8 and 2.5mm pixel pitches
- Supports the closest viewing distances
- Outstanding image quality
- Delivers benefits from unique 54" flat panel design
- Advanced design for reliability and ease of installation
- Delivers power efficiency
- 16:9 aspect ratio for Full HD, 4K and 8K resolutions

NEW **Leyard® TVF Series**

The Leyard TVF Series is a family of simple, fine pitch LED video wall displays in 1.5, 1.8 and 2.5 millimeter pixel pitches. With a slim profile and 27" display, Leyard TVF Series features front serviceability and a stackable design that eliminates cabinet-to-cabinet cabling and reduces complexity of installation and vertical alignment.



- Available in 1.5, 1.8 and 2.5mm pixel pitches
- Stackable design with zero cabinet-to-cabinet cabling
- Lightweight 27" cabinet with slim cabinet profile under 3-inches
- Front installation and serviceability
- 16:9 aspect ratio and outstanding image quality for Full HD and 4K resolutions

NEW **Leyard® VersaLight™ Series**

The Leyard VersaLight Series is a line of versatile LED video wall displays for digital signage that can turn even the most challenging environments into dramatic, inspirational video walls. The Leyard VersaLight Series offers a self-contained modular structure, stunning image quality, ultra-reliable performance and a range of pixel pitches in indoor and outdoor models.



- Available in 2.5, 4 and 6mm pixel pitches for indoor applications
- Available in 4, 6 and 8mm pixel pitches for outdoor applications
- Configurable to support both large walls and tighter built-in spaces
- Flexible mounting options deliver wide range of mounting options
- Front-access installation and service available

LED VIDEO WALLS

Leyard® TVH Series

The Leyard TVH Series is a line of high-performance, fine pitch LED video wall displays with industry-leading image quality in an advanced design and high reliability for demanding indoor applications. In a 19.5" cabinet, Leyard TVH Series perfect for a wide range of applications and environments.

- Available in 1.6, 1.9 and 2.5mm pixel pitches
- Supports the closest viewing distances with excellent black levels and image control
- Supports curved video walls and build-to-fit spaces
- Optional redundant video and dual power
- Fanless, whisper-quiet operation for low-noise environments



Leyard® uLV Series

The Leyard uLV Series is a line of outdoor LED video wall displays with exceptional value and a vivid, bright, consistent image. Highly scalable and front serviceable, the Leyard uLV Series' efficient design reduces construction and operating costs.

- Available in 10, 16 and 20mm pixel pitches
- Rugged, weather-resistant cabinet design for outdoor use
- Front serviceable LED modules
- High brightness for outdoor performance
- 24x7 operation



Leyard® uEV Series

The Leyard uEV Series is a line of high impact, standard pitch LED video wall displays, ideal for digital signage in larger indoor environments. Providing 24x7 operation, Leyard uEV Series is highly reliable and easy to maintain.

- Available in 4, 5 and 6mm pixel pitches
- Outstanding image quality
- Reliable performance and long life with quiet design and 24x7 operation
- Front serviceability



LEYARD CARBONLIGHT LED DISPLAYS

Leyard® CarbonLight™ LED Displays are a comprehensive line of LED display solutions designed specifically for rental, staging and fixed-flexible installations. With a broad range of models, Leyard CarbonLight LED displays deliver a wide range of unique LED display solutions for eye-catching, creative public venue installations.

Leyard® CarbonLight™ CLI Series Indoor LED Video Wall

- Available in 2.6, 3.9 and 5.2mm pixel pitches – New 1.9mm pixel pitch added!
- Rear and front service models now available
- Ideal for indoor applications
- Lightweight carbon fiber construction with 45° display edges for 90° corners
- Compatible for hanging or free-standing installs
- Display size: 500 x 500 x 53mm



Leyard® CarbonLight™ CLA Series Indoor LED Video Wall

- Available in 1.5 and 1.9mm pixel pitches
- Lightweight carbon fiber construction
- Leyard PrecisionArc alignment technology for seamless curved shapes
- Compatible for hanging or free-standing installs
- Display size: 250 x 250 x 58mm



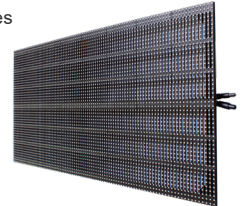
Leyard® CarbonLight™ CLO Series Outdoor LED Video Wall

- Available in 3.9, 5.2 and 7.8mm pixel pitches
- Ideal for outdoor applications
- Lightweight carbon fiber construction with 45° display edges for 90° corners
- IP65 Protection rating for outdoor applications
- Display size: 500 x 500 x 55mm



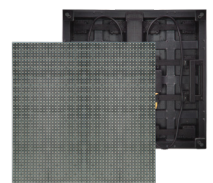
Leyard® CarbonLight™ CLM Series Mesh LED System

- Available in 6.9, 10.4 and 15.6mm pixel pitches
- See-through mesh design
- Lightweight carbon fiber construction
- 45° display edges for 90° corners
- IP65 Protection rating for outdoor applications
- Display size: 1000 x 500 x 45mm



Leyard® CarbonLight™ CLF Series LED Flooring System

- Available in 5.2, 6.2 and 10.4mm pixel pitches
- Loads up to 500 kg per display
- High-strength, wear-proof mask
- IP65 Protection rating (6.2 and 10.4mm pitches)
- Display size: 500 x 500 x 82mm



LED SOLUTIONS

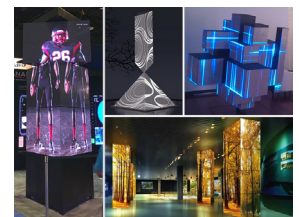
Leyard® Reality Solutions™

- Enables immersive visual environments for real-time exploration
- Create virtual broadcast sets with photo realism and without the limitations of green screen
- Explore 3D models in the physical space for analysis or exploring virtual worlds for collaborative game play
- Entire system is designed and tested for your unique application and delivered complete, along with user and operator training
- Multiple people can be in the scene at once, interacting with the content and sharing the collaborative experience



Leyard® Creative LED Solutions

- Bring excitement with creative LED products and design services
- Unlimited size and shapes
- Broad range pitches and formats
- Solutions for indoor and outdoor
- Fixed and temporary installations
- Your unique vision brought to life



LCD VIDEO WALLS

NEW

Clarity® Matrix® G3 LCD Video Wall System

The third generation Clarity Matrix G3 LCD Video Wall System advances every aspect of the unique Clarity Matrix architecture, building on the accomplishments of the award-winning family of LCD video wall solutions.

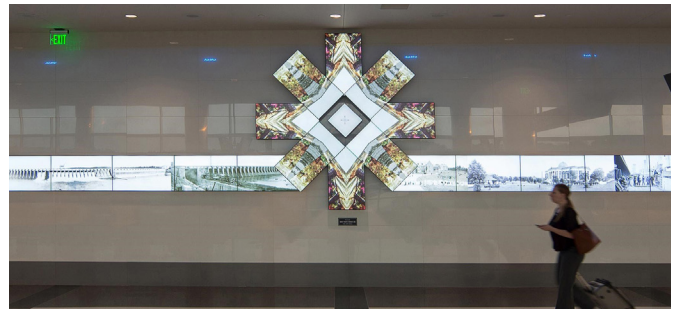
- Next-generation LCD video wall system with built-in video wall processing
- Extreme narrow bezel LCD video wall - 1.7mm tiled bezel width, available in 46" and 55"
- Features WallDirector™ Software for simplified installation, monitoring and video wall management
- Enhanced Built-in Planar® Big Picture Plus™ Processing supports 4K at up to 60Hz and scaling across video wall or separate sections of video wall
- Mission-critical off-board electronics and hot-swappable redundant power supplies for 24x7 reliability
- Includes Planar® EasyAxis™ Mounting System for precise alignment and thinnest profile install depth of 3.6"
- Available with Planar® ERO™ protective glass, fiber video extension, passive 3D and interactive multi-touch models



Planar® Mosaic® Architectural Video Wall

Planar Mosaic is the only video wall solution that allows designers to mix-and-match three different LCD display tile sizes and shapes into unique arrays not possible with traditional video walls.

- Available in unique sizes:
 - Planar® Salvador™ – 22" truly square tile
 - Planar® Pablo™ – 46" rectangle tile
 - Planar® Vincent™ – 55" rectangle tile
- Mount tiles at any angle or in any position and easily scale one image or video
- Includes off-board power supply modules, mounting system and design software
- Mosaic® Ensemble™ package for all-in-one solution



PROCESSING & PLAYERS

UPDATED

Clarity® Visual Control Station™ (VCS™) Video Wall Processor

The Clarity Visual Control Station (VCS) features multi-video wall support, allowing users to create, resize and move windows to any location across one or multiple video walls. Cost-effective and easy-to-use video wall processor optimized for Leyard and Planar video walls.

- HDMI and DVI capture with HDCP 1.4 support for 4K and Full HD sources
- Drive video walls of up to 32 high resolution displays
- Simplified installation process and multi-video wall support on all versions
- Includes Windows® 10-LTSB-based VCS Control Software and reliable SSD drives for Standard or Enterprise Editions



Planar® ContentSmart™ Media Player

The Planar ContentSmart Media Player is a digital signage media player platform featuring Full HD 1080p and Ultra HD resolution models and ContentSmart™ Software for easy-to-design and deploy digital signage.

- Available in Full HD or 4K resolution
- 4K player also available in OPS format
- Comes standard with ContentSmart™ Software
- Also embedded seamlessly into the Planar QE Series 4K Large Format LCD Displays



Open Pluggable Specification (OPS) Modules

Compatible with Intel's Open Pluggable Specification (OPS), Planar's selection of expansion modules can be integrated seamlessly into Planar displays with OPS slots.

- Planar ContentSmart Media Player, HD BaseT and 3G-SDI cards compliant with Intel's Open Pluggable Specification (OPS)
- Integrates seamlessly into displays with OPS expansion slots, including Planar UltraRes Series and Planar EP Series displays



LARGE FORMAT LCDS

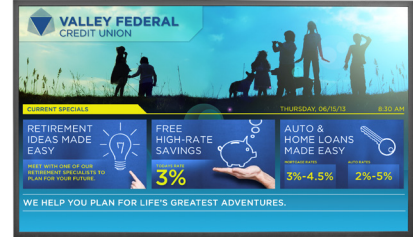
Planar® UltraRes™ Series

- 75", 86" and 98" Ultra HD resolution (3840 x 2160) LCD displays
- Supports native 4K at up to 60Hz with HDMI and DisplayPort
- Fanless, whisper quiet operation with built-in power redundancy
- Designed for 24x7 operation
- Optional Planar® Profile™ Mounting System enables industry's thinnest mounted depth
- Available with interactive touch and optional Planar® TouchMark™ annotation, whiteboarding software
- Touch and Planar ERO models available
- Advanced multi-source viewing with Planar® MediaPlex™ Plus processing



Planar® PS Series

- Commercial-grade 46", 55" and 65" Full HD (1920 x 1080) LCD displays
- Designed for 24x7 operation
- Durable metal bezel
- Wide range of advanced features for professional applications
- Models available with interactive touch



Planar® QE Series

- 75", 86" and 98" Ultra HD resolution LCD displays
- Superior 4K video performance and compatibility
- End-to-end digital signage with embedded Planar ContentSmart 4K player and software
- Available with interactive touch and optional Planar TouchMark annotation and whiteboarding software
- Multi-source viewing of 4 simultaneous sources
- Landscape and portrait flexibility
- Designed for 24x7 operation
- Fully integrated multi-touch models available



Planar® Simplicity™ Series

- Cost-effective 43", 48", 55" and 65" Full HD LCD displays
- USB media playback
- On/off scheduling
- Ultra-slim profile
- Logo-free, narrow bezel
- Full array of connectivity and control



Planar® EP Series

- 50", 58" and 65" Ultra HD resolution LCD displays
- High performance commercial-grade LCD displays designed for 24x7 operation
- OPS slot
- Ultra-slim profile and logo-free metal bezel
- Supports landscape and portrait
- Built-in speakers
- Available with interactive touch and optional Planar TouchMark annotation and whiteboarding software
- Fully integrated multi-touch models available



DESKTOP AND TOUCH MONITORS

Touch Screen Monitors

- Planar® Helium™ Series: 22" to 27" multi-touch monitors, built for the ultimate touch experience
- Planar® PXL Series: 22" to 24" dual touch monitors, built for the most demanding multimedia applications
- Planar® PT Series: 15" to 32" single and multi-touch monitors, built for demanding point-of-sale, point-of-purchase and public environments



Desktop Monitors

- Planar® PL Series: 15" to 27" monitors, featuring a thin bezel design, crisp images and proven reliability
- Planar® PXL Series: 22" to 32" monitors, built for the most demanding multimedia applications
- Full HD and QHD resolution models and nearly borderless bezel design models also available



www.leyard.com | www.planar.com

North America
1-866-475-2627
sales@leyardgroup.com

EMEA
+421 907-775-941
sales.emea@leyardgroup.com

APAC
+86-755-29671180
info.asia@leyardgroup.com

Japan
+81-3-6915-2768
info.japan@leyardgroup.com

Latin America
+55-41-3059-5100
info.brazil@leyardgroup.com