



Visual Impact and Ultimate Versatility

The Leyard® VersaLight™ Series is an innovative family of LED video wall displays designed with flexibility to support a wide range of indoor and outdoor applications with a variety of pixel pitches. Leyard VersaLight Series features a quick-install, self-supporting mounting system and self-contained LED cabinet design making it capable of covering a wide range of video wall installation strategies including: wall or ceiling-mounting, hanging, stacking and mounting individual LED cabinets directly to custom frames.

The Leyard VersaLight Series offers stunning picture quality, 24x7 reliability performance, intuitive LED health and system status monitoring along with unprecedented ease of operation. Leyard VersaLight Series seamless video walls deliver the high contrast, high brightness and high impact Leyard is known for at an affordable price.

A Modular Design Approach

The Leyard VersaLight Series compact cabinets measure 240x480mm (portrait) or 480x240mm (landscape) and serve as self-contained units, each with power and data in and loop outputs. Cabinets can be mounted to standard 1x1 or 2x2 Leyard VersaLight Mounts, or can be mounted to custom frames to suit an application.

The flexible design of the Leyard VersaLight Series, combined with indoor and outdoor models, allows for ultimate flexibility in digital signage design.

A Variety of Models:

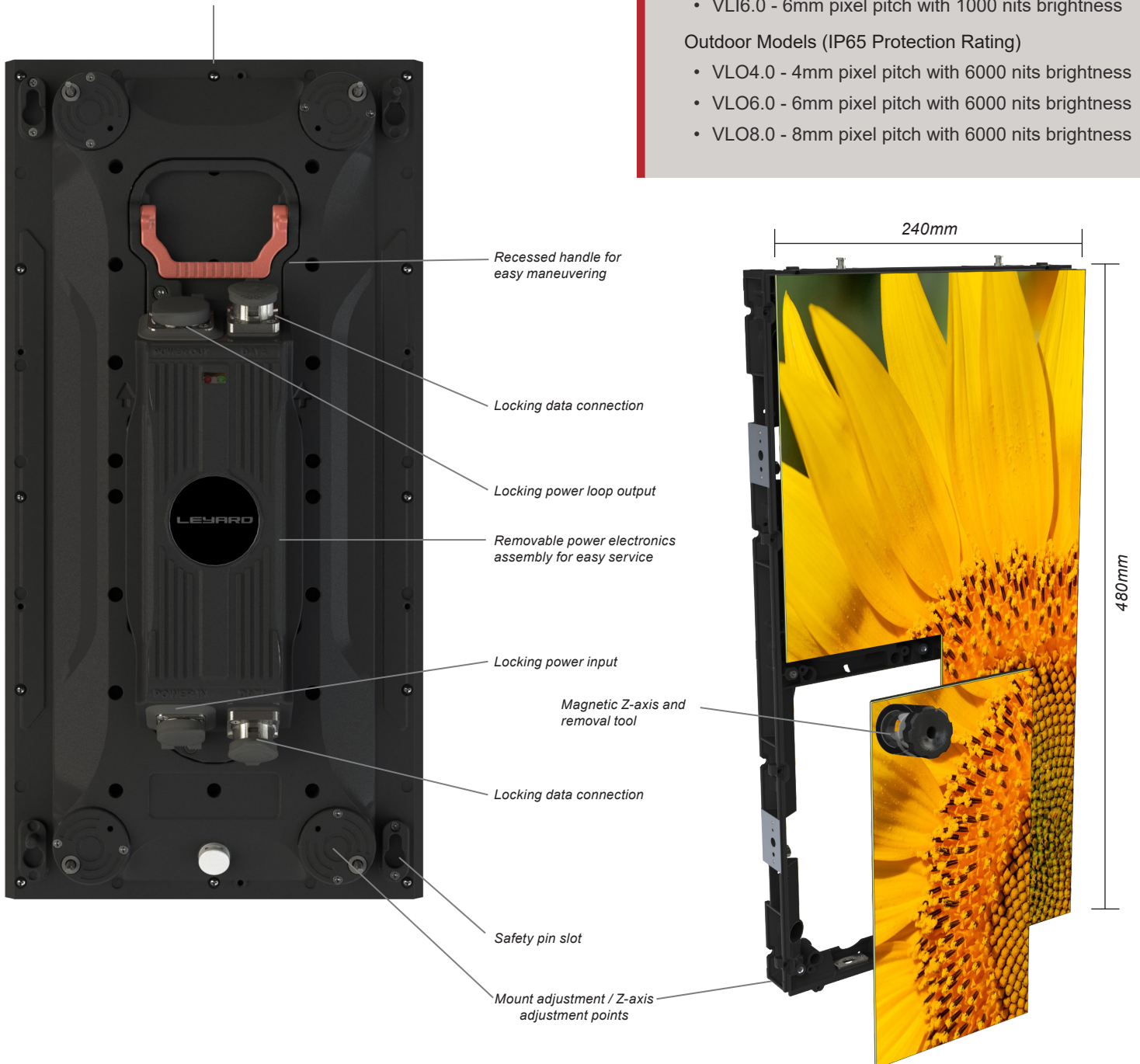
Indoor Models

- VLI2.5 - 2.5mm pixel pitch with 1000 nits brightness
- VLI4.0 - 4mm pixel pitch with 1000 nits brightness
- VLI6.0 - 6mm pixel pitch with 1000 nits brightness

Outdoor Models (IP65 Protection Rating)

- VLO4.0 - 4mm pixel pitch with 6000 nits brightness
- VLO6.0 - 6mm pixel pitch with 6000 nits brightness
- VLO8.0 - 8mm pixel pitch with 6000 nits brightness

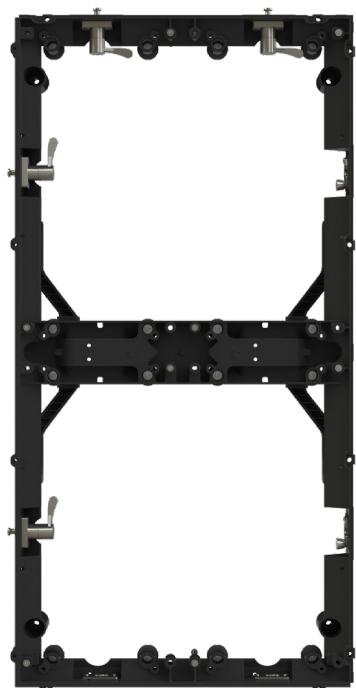
Beveled edges for reduced seam width on faceted convex video walls





Fits in Virtually Any Space

Leyard VersaLight Series' unique, self-contained cabinets are perfectly suited for fixed indoor and outdoor signage applications in retail and hospitality verticals. Its modular design supports space-challenged applications and video walls of custom shapes and sizes. No other LED video wall product can be mounted, installed and serviced in as many ways. Leyard VersaLight Series is the only Leyard LED video wall display that can be designed down to a 240mm width, making it the go-to LED video wall solution for both open spaces and narrow columns, thin banners and other space-challenged installations, providing the ultimate in video wall design creativity.



Leyard VersaLight Mount

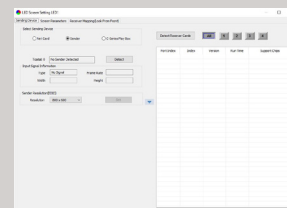
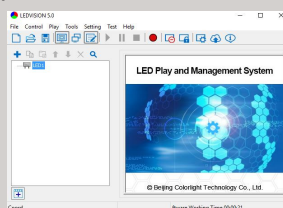
The Leyard VersaLight Mounting system, available in a 1x1 or 2x2 version, is comprised of a die-cast aluminum interlocking frame structure that supports wall or ceiling-mounted, hung or stacked installations. An optional rental kit provides rear handles and cam-action, interlocking hardware for fast-up and fast-down applications.

With an ADA-compliant installation depth of less than four inches, the Leyard VersaLight Series Mounting brings seamless integration into nearly any environment, along with ultimate design flexibility.

24x7 Reliability

The Leyard VersaLight Series is designed to handle 24x7 operation. LED health and system status reporting on each display ensures complete reliability for mission-critical applications.

The video wall can be remotely controlled/monitored using a PC through the included Windows® compatible control software.



LEYARD VERSALIGHT SERIES SPECIFICATIONS

Product Name	VLI2.5	VLI4.0	VLI6.0	VLO4.0	VLO6.0	VLO8.0
Pixel Pitch	2.5mm	4.0mm	6.0mm	4.0mm	6.0mm	8.0mm
Display Resolution	96 x 192	60 x 120	40 x 80	60 x 120	40 x 80	30 x 60
Pixel Density (pixels)	160,000 / sq m 2123 / sq ft	652,000 / sq m 826 / sq ft	27,778 / sq m 369 / sq ft	62,500 / sq m 829 / sq ft	27,778 / sq m 369 / sq ft	15,625 / sq m 207 / sq ft
LED type	Commercial grade 3-in-1 Black SMD					
LED surround	Leyard® MicroGrid Shader™					
Brightness Max (cd/sq. m)	1000			6000		
Color Gamut	100% NTSC					
Contrast Ratio	> 6,000:1					
LED Refresh Rate	2000 Hz					
Color Temperature, adjustable (k)	3,200 - 9,300					
Brightness Uniformity	>=97%					
Color Uniformity	>=97%					
Viewing Angle, Horizontal	120°					
Viewing Angle, Vertical	100°					
LED Lifetime: Typical	> 80,000 hrs					
Display Size (W x H x D)	240 x 480 x 94mm 9.45 x 18.9 x 3.7in					
Mounted Depth	93.4mm / 3.7in			95.9mm / 3.8in		
Display Weight with Mount (kg/display)	34kg /sqm 75lb / sqm					
Mount Weight per Display (kg/display)	3.2 kg 7 lb					
Power Consumption, Max. (watts)	62 watts / Cabinet 539 watts / sq m			76 watts / Cabinet 600 watts / sq m		
Power Consumption, Typ (watts)	31 watts / Cabinet 270 watts / sq m			38 watts / Cabinet 330 watts / sq m		
Acoustic Noise	Fanless Operation					
Operating Temperature/Humidity (degrees F/C) 10-80% relative humidity, non-condensing)	-10° to 50° C -14° to 122° F					
Regulatory Compliance	NRTL, FCC Class A, CE Class A, WEEE, EN60950 and CISPR 22/2010 certification					

VIDEO CONTROLLER

Video Inputs	1 x HDMI in, 4 x Cat6 / RJ45 output
HDCP Compliant	Yes
Video Input Resolution Maximum	1920 x 1200
Frame Rate	50, 60Hz
Video Signal Extension Options	CAT6 and Fiber Optic
Video Signal Redundancy	Optional
Video Extension Redundancy	Optional
Display Control	Colorlight LEDVISION software included
Control Input Type	USB or Ethernet

MECHANICAL

Hanging	Supported in both 1 x 1 or 2 x 2 mounts
Stacking	Supported in both 1 x 1 or 2 x 2 mounts
Wall Mount	Available in 1 x 1 or 2 x 2 mounts
Installation and Service Access	VLI2.5 / VLI4.0 / VLI6.0 - Front VLO4.0 / VLO6.0 / VLO8.0 - Front and Rear
Display Position Adjustment	4-Point Z-Axis Adjustment on Cabinet
Americans with Disability Act (ADA) Compliance	Yes, less than 4" clearance from wall
Forward Tilt	Up to 10°
Concave Curve	Supported with Custom Frame

www.leyard.com | www.planar.com

North America
1-866-475-2627
sales@leyardgroup.com

EMEA
+421-907-775-941
sales.emea@leyardgroup.com

APAC
+86-755-29671180
info.asia@leyardgroup.com

Japan
+81-3-6915-2768
info.japan@leyardgroup.com

Latin America
+55-41-3059-5100
info.brazil@leyardgroup.com