
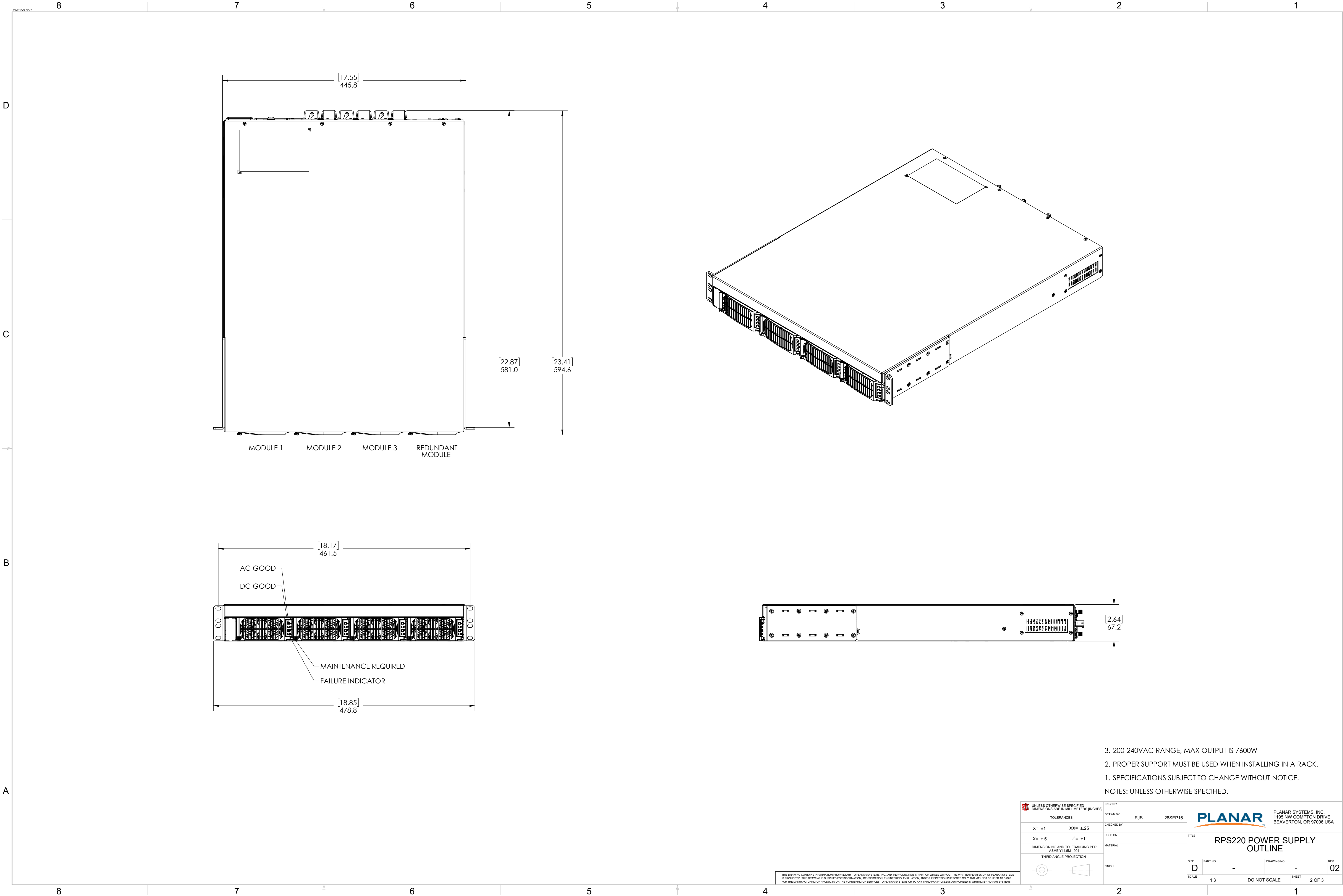


REVISION HISTORY					
ECO	ZONE	REV.	DESCRIPTION	DATE	APPR'D

3. 100-240VAC RANGE, MAX OUTPUT IS 4000W
2. PROPER SUPPORT MUST BE USED WHEN INSTALLING IN A RACK.
1. SPECIFICATIONS SUBJECT TO CHANGE WITHOUT NOTICE.
NOTES: UNLESS OTHERWISE SPECIFIED.

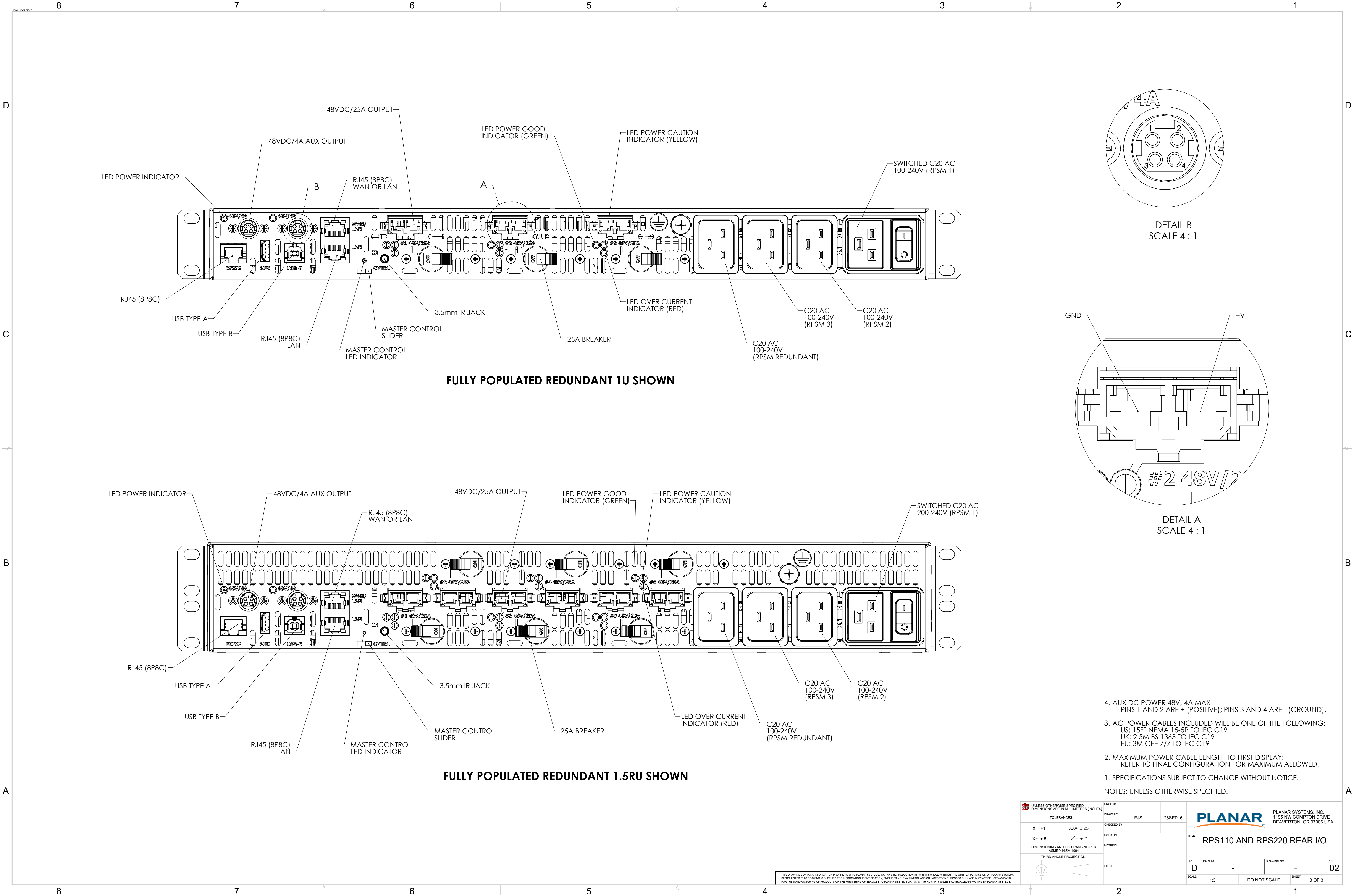
UNLESS OTHERWISE SPECIFIED DIMENSIONS ARE IN MILLIMETERS [INCHES]		ENGR BY		DRAWN BY		CHECKED BY		USED ON		MATERIAL		FINISH	
TOLERANCES:		EJS		28SEP16									
X= ± 1		XX= ±.25											
X= ±.5		∠= ±1°											
DIMENSIONING AND TOLERANCING PER ASME Y14.5M-1994													
THIRD ANGLE PROJECTION													
													

THIS DRAWING CONTAINS INFORMATION PROPRIETARY TO PLANAR SYSTEMS, INC. ANY REPRODUCTION IN PART OR WHOLE WITHOUT THE WRITTEN PERMISSION OF PLANAR SYSTEMS IS PROHIBITED. THIS DRAWING IS SUPPLIED FOR INFORMATION, IDENTIFICATION, ENGINEERING, EVALUATION, AND/OR INSPECTION PURPOSES ONLY AND MAY NOT BE USED AS BASIS FOR THE MANUFACTURING OF PRODUCTS OR THE FURNISHING OF SERVICES TO PLANAR SYSTEMS OR TO ANY THIRD PARTY UNLESS AUTHORIZED IN WRITING BY PLANAR SYSTEMS.



THIS DRAWING CONTAINS INFORMATION PROPRIETARY TO PLANAR SYSTEMS, INC. ANY REPRODUCTION IN PART OR WHOLE WITHOUT THE WRITTEN PERMISSION OF PLANAR SYSTEMS IS PROHIBITED. THIS DRAWING IS SUPPLIED FOR INFORMATION, IDENTIFICATION, ENGINEERING, EVALUATION, AND/OR INSPECTION PURPOSES ONLY AND MAY NOT BE USED AS BASIS FOR THE MANUFACTURING OF PRODUCTS OR THE FURNISHING OF SERVICES TO PLANAR SYSTEMS OR TO ANY THIRD PARTY UNLESS AUTHORIZED IN WRITING BY PLANAR SYSTEMS.

UNLESS OTHERWISE SPECIFIED: DIMENSIONS ARE IN MILLIMETERS [INCHES]		ENGR BY	
TOLERANCES:		DRAWN BY	EJS
X= ±1	XX= ±.25	CHECKED BY	28SEP16
.X= ±.5	∠= ±1°	USED ON	
DIMENSIONING AND TOLERANCING PER ASME Y14.5M-1994		MATERIAL	
THIRD ANGLE PROJECTION		FINISH	
TITLE		SIZE	PART NO.
RPS220 POWER SUPPLY OUTLINE		D	-
SCALE		DRAWING NO.	REV
1:3		-	02
DO NOT SCALE		SHEET	2 OF 3



FULLY POPULATED REDUNDANT 1U SHOWN

FULLY POPULATED REDUNDANT 1.5RU SHOWN

DETAIL B
SCALE 4 : 1

DETAIL A
SCALE 4 : 1

4. AUX DC POWER 48V, 4A MAX
PINS 1 AND 2 ARE + (POSITIVE); PINS 3 AND 4 ARE - (GROUND).
3. AC POWER CABLES INCLUDED WILL BE ONE OF THE FOLLOWING:
US: 15FT NEMA 15-5P TO IEC C19
UK: 2.5M BS 1363 TO IEC C19
EU: 3M CEE 7/7 TO IEC C19
2. MAXIMUM POWER CABLE LENGTH TO FIRST DISPLAY:
REFER TO FINAL CONFIGURATION FOR MAXIMUM ALLOWED.
1. SPECIFICATIONS SUBJECT TO CHANGE WITHOUT NOTICE.
- NOTES: UNLESS OTHERWISE SPECIFIED.

UNLESS OTHERWISE SPECIFIED: DIMENSIONS ARE IN MILLIMETERS (INCHES)		ENGR BY		
TOLERANCES:		DRAWN BY	EJS	28SEP16
X= ±1	XX= ±.25	CHECKED BY		
.X= ±.5	∠= ±1°	USED ON		
DIMENSIONING AND TOLERANCING PER ASME Y14.5M-1994		MATERIAL		
THIRD ANGLE PROJECTION		FINISH		
TITLE		SIZE	PART NO.	DRAWING NO.
RPS110 AND RPS220 REAR I/O		D	-	-
SCALE		1:3	DO NOT SCALE	SHEET
				02
				3 OF 3

THIS DRAWING CONTAINS INFORMATION PROPRIETARY TO PLANAR SYSTEMS, INC. ANY REPRODUCTION IN PART OR WHOLE WITHOUT THE WRITTEN PERMISSION OF PLANAR SYSTEMS IS PROHIBITED. THIS DRAWING IS SUPPLIED FOR INFORMATION, IDENTIFICATION, ENGINEERING, EVALUATION, AND/OR INSPECTION PURPOSES ONLY AND MAY NOT BE USED AS BASIS FOR THE MANUFACTURING OF PRODUCTS OR THE FURNISHING OF SERVICES TO PLANAR SYSTEMS OR TO ANY THIRD PARTY UNLESS AUTHORIZED IN WRITING BY PLANAR SYSTEMS.