

STANDARD WALL DIMENSIONS (mm/in)						
ROWS	COLUMNS	HEIGHT		WIDTH		DIAGONAL
2	2	1365.9	53.78	2424.3	95.45	2782.6
2	3	1365.9	53.78	3636.7	143.18	3884.7
3	3	2049.1	80.67	3636.7	143.18	4174.2
3	4	2049.1	80.67	4849.0	190.91	5264.2
4	4	2732.2	107.57	4849.0	190.91	5565.8
5	5	3415.4	134.46	6061.4	238.64	6957.4

4. IT IS RECOMMENDED THAT FOR FLUSH WALLS, A MINIMUM OF 13mm (0.5") GAP BE LEFT AT THE SIDES AND A MINIMUM OF 25mm (1.0") GAP BE LEFT AT THE BOTTOM. SEE PAGE ONE FOR TOP GAP RECOMMENDATIONS.
3. IT IS RECOMMENDED THAT A MINIMUM OF 5 FEET OF CABLE IS AVAILABLE FOR PANELS NEXT TO THE CONDUIT OPENING. MORE WILL BE NEEDED FOR PANELS FARTHER AWAY.
2. ENSURE THE LCD MOUNTS ARE MOUNTED FLAT, LEVEL, AND PLUMB.
1. SPECIFICATIONS SUBJECT TO CHANGE WITHOUT NOTICE.
- NOTES: UNLESS OTHERWISE SPECIFIED.

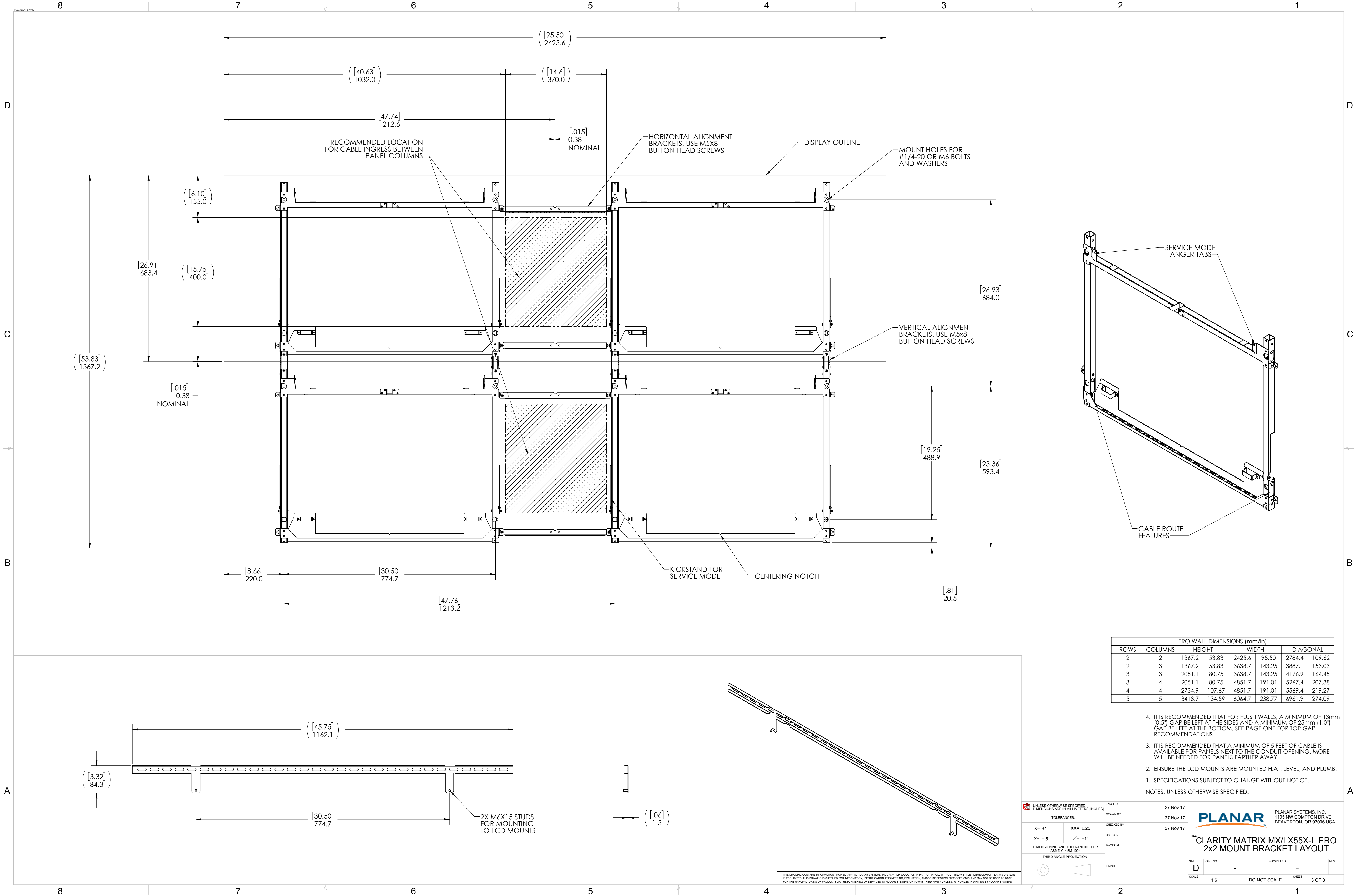
UNLESS OTHERWISE SPECIFIED, DIMENSIONS ARE IN MILLIMETERS (INCHES)		ENGR BY	27 Nov 17
TOLERANCES:		DRAWN BY	27 Nov 17
X= ±1	XX= ±.25	CHECKED BY	27 Nov 17
.X= ±.5	∠= ±1°	USED ON	
DIMENSIONING AND TOLERANCING PER ASME Y14.5M-1994		MATERIAL	
THIRD ANGLE PROJECTION		FINISH	
DRAWING NO.		PART NO.	REV
D		-	-
SCALE		DO NOT SCALE	SHEET
1:6			2 OF 8

PLANAR SYSTEMS, INC.  
1195 NW COMPTON DRIVE  
BEAVERTON, OR 97006 USA

**PLANAR**

**CLARITY MATRIX MX/LX55X-L  
2x2 MOUNT BRACKET LAYOUT**

THIS DRAWING CONTAINS INFORMATION PROPRIETARY TO PLANAR SYSTEMS, INC. ANY REPRODUCTION IN PART OR WHOLE WITHOUT THE WRITTEN PERMISSION OF PLANAR SYSTEMS IS PROHIBITED. THIS DRAWING IS SUPPLIED FOR INFORMATION, IDENTIFICATION, ENGINEERING, EVALUATION, AND/OR INSPECTION PURPOSES ONLY AND MAY NOT BE USED AS BASIS FOR THE MANUFACTURING OF PRODUCTS OR THE FURNISHING OF SERVICES TO PLANAR SYSTEMS OR TO ANY THIRD PARTY UNLESS AUTHORIZED IN WRITING BY PLANAR SYSTEMS.



ERO WALL DIMENSIONS (mm/in)					
ROWS	COLUMNS	HEIGHT	WIDTH	DIAGONAL	
2	2	1367.2	53.83	2425.6	95.50
2	3	1367.2	53.83	3638.7	143.25
3	3	2051.1	80.75	3638.7	143.25
3	4	2051.1	80.75	4851.7	191.01
4	4	2734.9	107.67	4851.7	191.01
5	5	3418.7	134.59	6064.7	238.77

- IT IS RECOMMENDED THAT FOR FLUSH WALLS, A MINIMUM OF 13mm (0.5") GAP BE LEFT AT THE SIDES AND A MINIMUM OF 25mm (1.0") GAP BE LEFT AT THE BOTTOM. SEE PAGE ONE FOR TOP GAP RECOMMENDATIONS.
- IT IS RECOMMENDED THAT A MINIMUM OF 5 FEET OF CABLE IS AVAILABLE FOR PANELS NEXT TO THE CONDUIT OPENING. MORE WILL BE NEEDED FOR PANELS FARTHER AWAY.
- ENSURE THE LCD MOUNTS ARE MOUNTED FLAT, LEVEL, AND PLUMB.
- SPECIFICATIONS SUBJECT TO CHANGE WITHOUT NOTICE.

NOTES: UNLESS OTHERWISE SPECIFIED.

UNLESS OTHERWISE SPECIFIED, DIMENSIONS ARE IN MILLIMETERS (INCHES)

TOLERANCES:

X= ±1

XX= ±.25

XX= ±.5

XX= ±1°

DIMENSIONING AND TOLERANCING PER ASME Y14.5M-1994

THIRD ANGLE PROJECTION

ENGR BY

DRAWN BY

CHECKED BY

USED ON

MATERIAL

FINISH

27 Nov 17

27 Nov 17

27 Nov 17

PLANAR

PLANAR SYSTEMS, INC.  
1195 NW COMPTON DRIVE  
BEAVERTON, OR 97006 USA

TITLE

CLARITY MATRIX MX/LX55X-L ERO  
2x2 MOUNT BRACKET LAYOUT

SIZE

PART NO.

DRAWING NO.

REV

SCALE

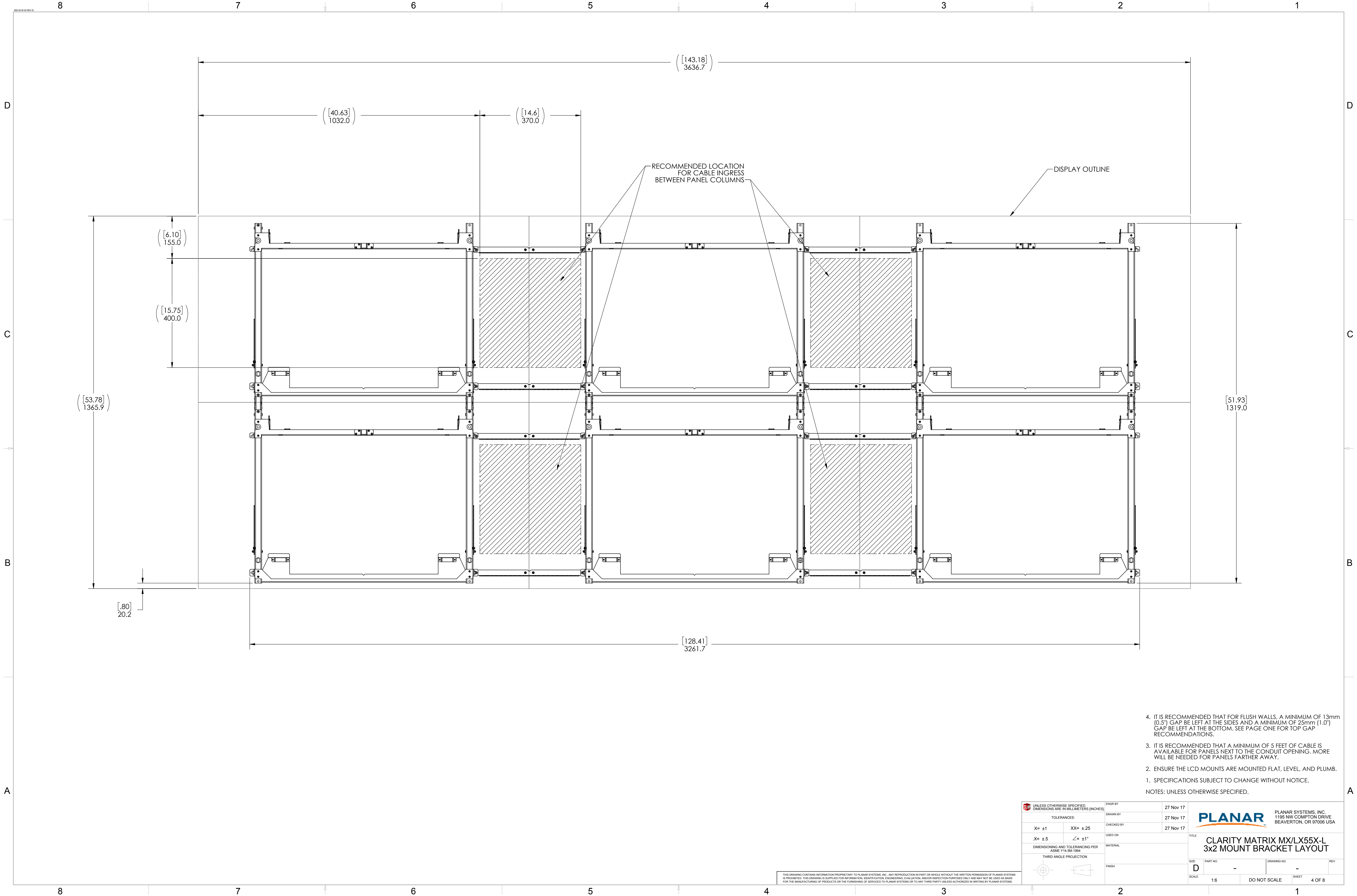
1:6

DO NOT SCALE

SHEET

3 OF 8

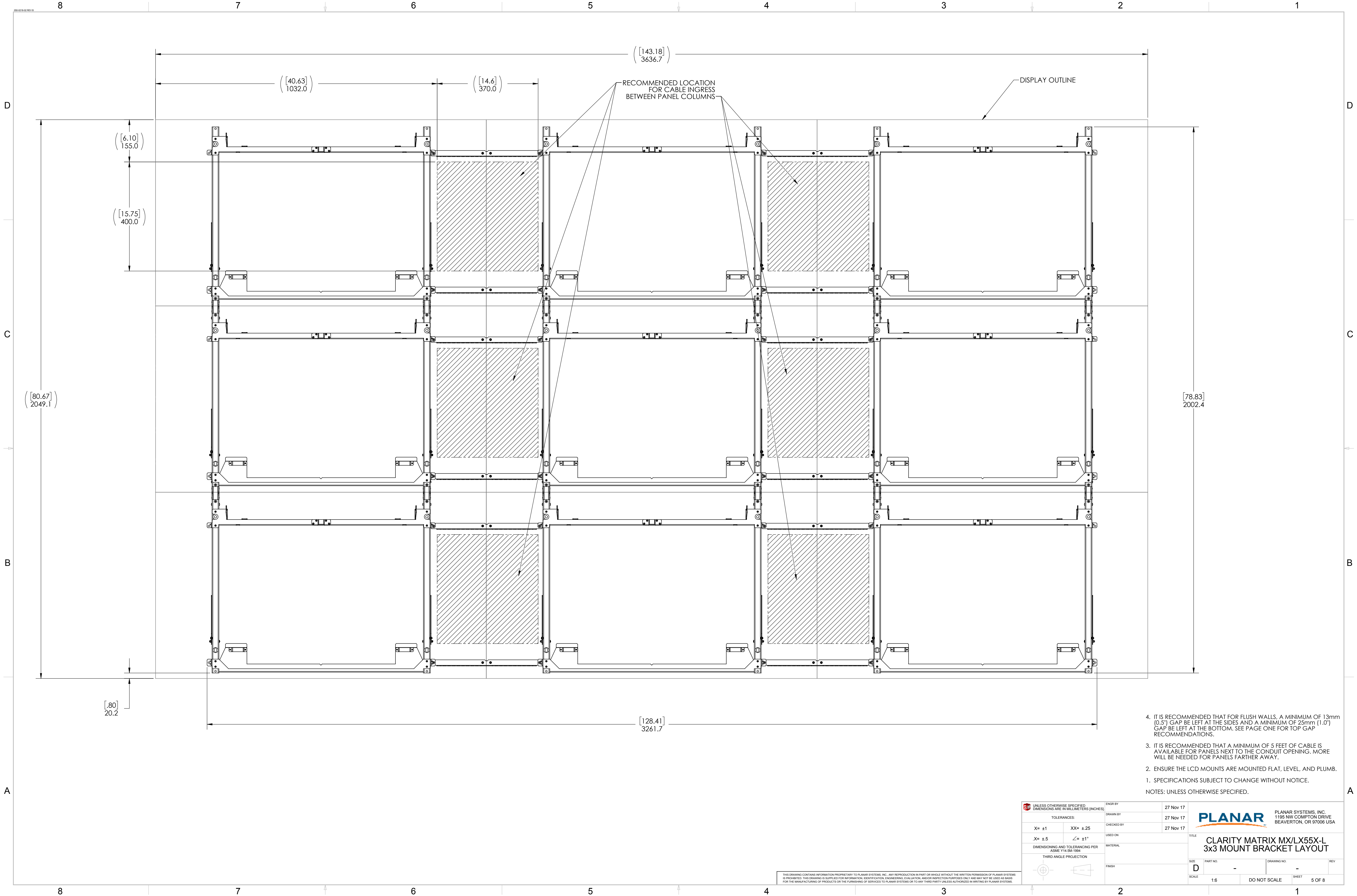
THIS DRAWING CONTAINS INFORMATION PROPRIETARY TO PLANAR SYSTEMS, INC. ANY REPRODUCTION IN PART OR WHOLE WITHOUT THE WRITTEN PERMISSION OF PLANAR SYSTEMS IS PROHIBITED. THIS DRAWING IS SUPPLIED FOR INFORMATION, IDENTIFICATION, ENGINEERING, EVALUATION, AND/OR INSPECTION PURPOSES ONLY AND MAY NOT BE USED AS BASIS FOR THE MANUFACTURING OF PRODUCTS OR THE FURNISHING OF SERVICES TO PLANAR SYSTEMS OR TO ANY THIRD PARTY UNLESS AUTHORIZED IN WRITING BY PLANAR SYSTEMS.



4. IT IS RECOMMENDED THAT FOR FLUSH WALLS, A MINIMUM OF 13mm (0.5") GAP BE LEFT AT THE SIDES AND A MINIMUM OF 25mm (1.0") GAP BE LEFT AT THE BOTTOM. SEE PAGE ONE FOR TOP GAP RECOMMENDATIONS.
3. IT IS RECOMMENDED THAT A MINIMUM OF 5 FEET OF CABLE IS AVAILABLE FOR PANELS NEXT TO THE CONDUIT OPENING. MORE WILL BE NEEDED FOR PANELS FARTHER AWAY.
2. ENSURE THE LCD MOUNTS ARE MOUNTED FLAT, LEVEL, AND PLUMB.
1. SPECIFICATIONS SUBJECT TO CHANGE WITHOUT NOTICE.
- NOTES: UNLESS OTHERWISE SPECIFIED.

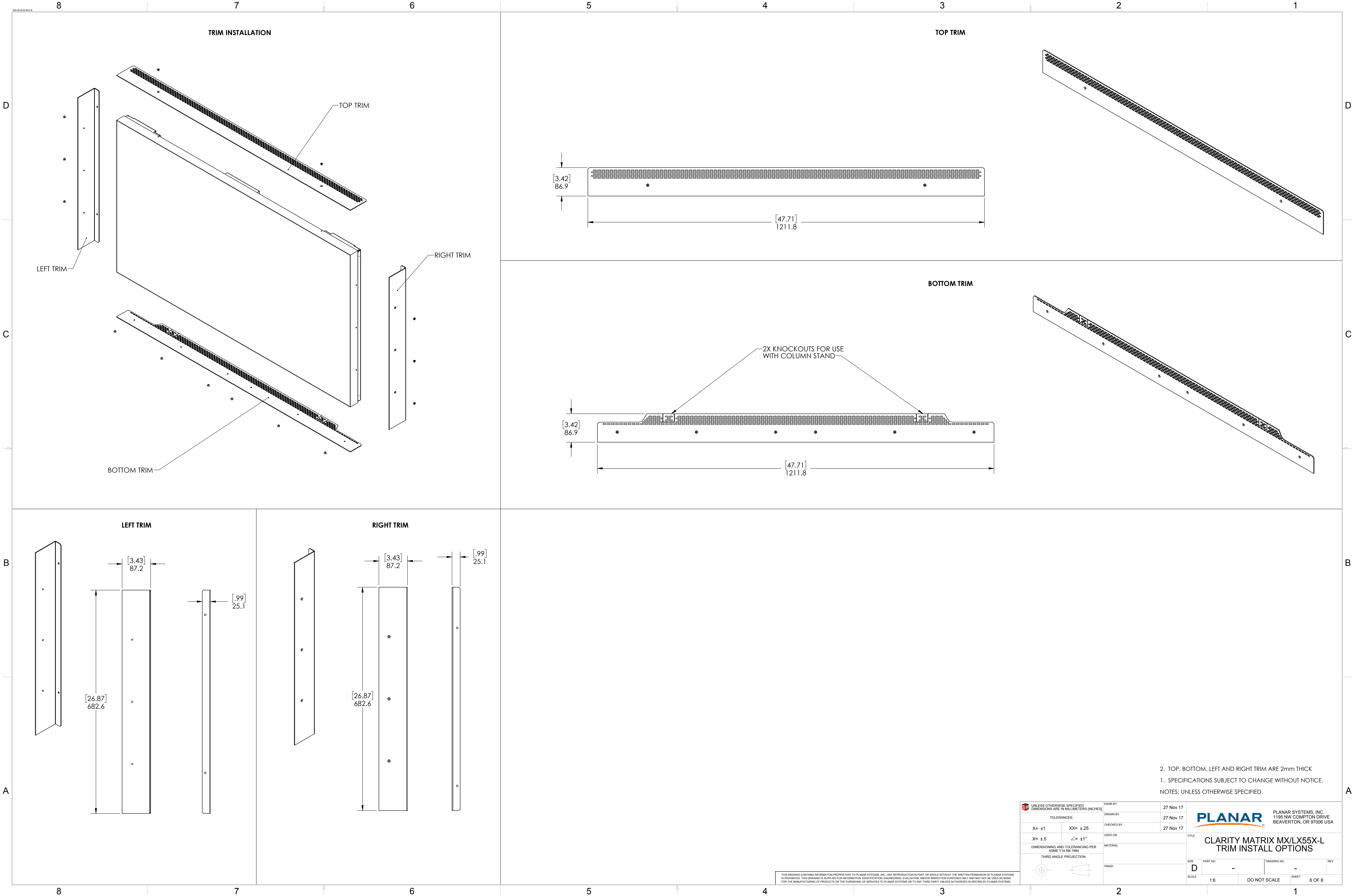
UNLESS OTHERWISE SPECIFIED: DIMENSIONS ARE IN MILLIMETERS (INCHES)		ENGR BY	27 Nov 17	<b>PLANAR</b> PLANAR SYSTEMS, INC. 1195 NW COMPTON DRIVE BEAVERTON, OR 97006 USA	
TOLERANCES:		DRAWN BY	27 Nov 17		
X= ±1	XX= ±.25	CHECKED BY	27 Nov 17	TITLE <b>CLARITY MATRIX MX/LX55X-L 3x2 MOUNT BRACKET LAYOUT</b>	
.X= ±.5	∠= ±1°	USED ON			
DIMENSIONING AND TOLERANCING PER ASME Y14.5M-1994		MATERIAL		SIZE <b>D</b>	PART NO. -
THIRD ANGLE PROJECTION		FINISH		DRAWING NO.	REV
				SCALE 1:6	SHEET 4 OF 8
				DO NOT SCALE	

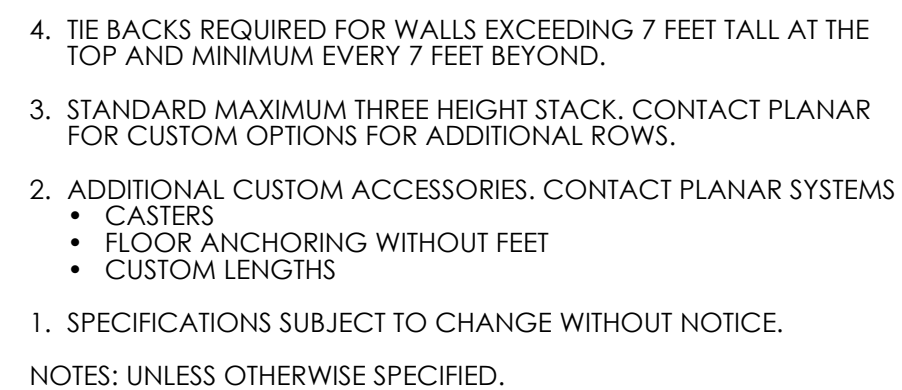
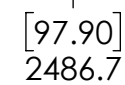
THIS DRAWING CONTAINS INFORMATION PROPRIETARY TO PLANAR SYSTEMS, INC. ANY REPRODUCTION IN PART OR WHOLE WITHOUT THE WRITTEN PERMISSION OF PLANAR SYSTEMS IS PROHIBITED. THIS DRAWING IS SUPPLIED FOR INFORMATION, IDENTIFICATION, ENGINEERING, EVALUATION, AND/OR INSPECTION PURPOSES ONLY AND MAY NOT BE USED AS BASIS FOR THE MANUFACTURING OF PRODUCTS OR THE FURNISHING OF SERVICES TO PLANAR SYSTEMS OR TO ANY THIRD PARTY UNLESS AUTHORIZED IN WRITING BY PLANAR SYSTEMS.



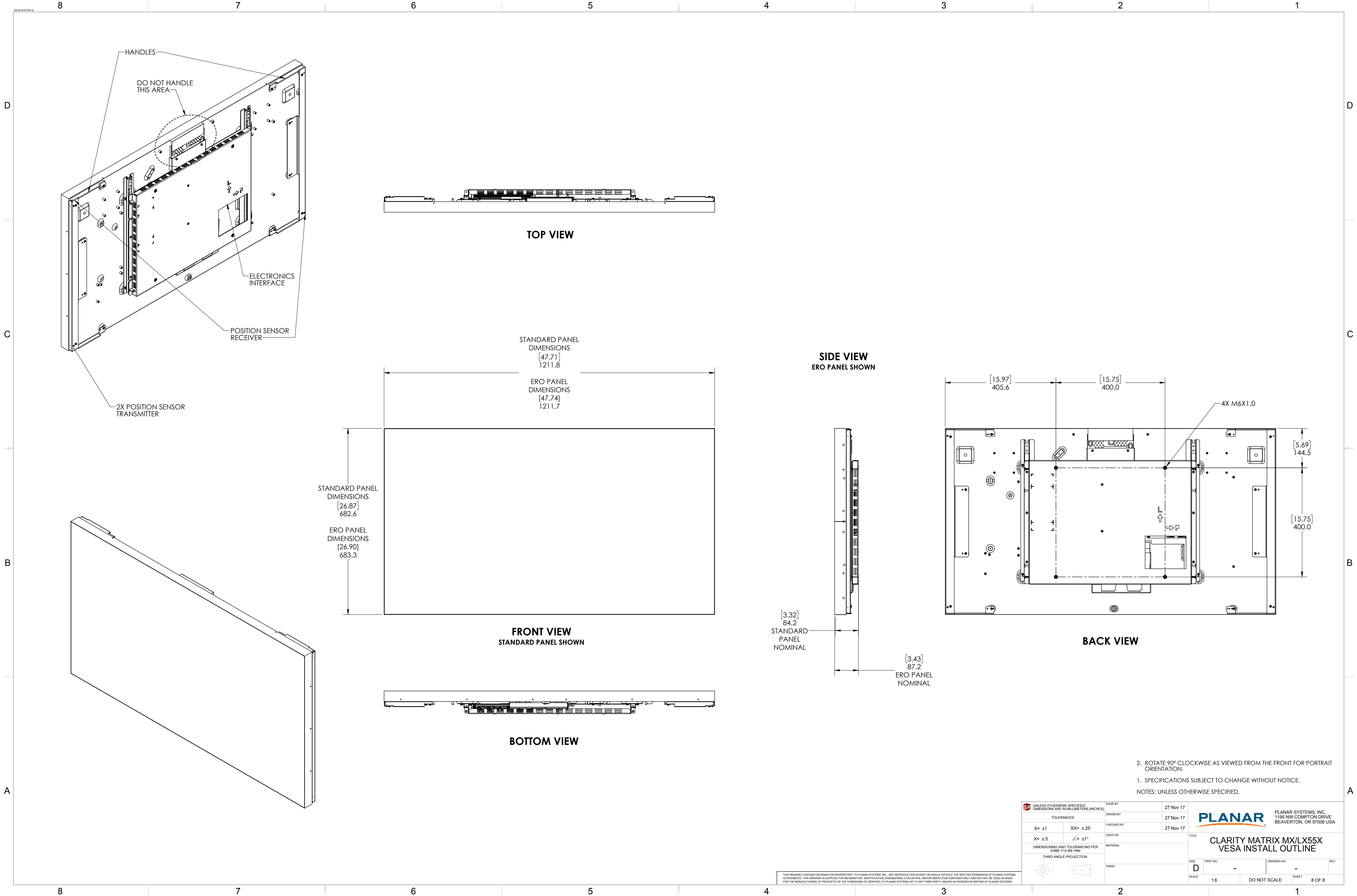
1. SPECIFICATIONS SUBJECT TO CHANGE WITHOUT NOTICE.
  2. ENSURE THE LCD MOUNTS ARE MOUNTED FLAT, LEVEL, AND PLUMB.
  3. IT IS RECOMMENDED THAT A MINIMUM OF 5 FEET OF CABLE IS AVAILABLE FOR PANELS NEXT TO THE CONDUIT OPENING. MORE WILL BE NEEDED FOR PANELS FARTHER AWAY.
  4. IT IS RECOMMENDED THAT FOR FLUSH WALLS, A MINIMUM OF 13mm (0.5") GAP BE LEFT AT THE SIDES AND A MINIMUM OF 25mm (1.0") GAP BE LEFT AT THE BOTTOM. SEE PAGE ONE FOR TOP GAP RECOMMENDATIONS.
- NOTES: UNLESS OTHERWISE SPECIFIED.

UNLESS OTHERWISE SPECIFIED DIMENSIONS ARE IN MILLIMETERS (INCHES)		ENGR BY	27 Nov 17	<b>PLANAR</b> PLANAR SYSTEMS, INC. 1195 NW COMPTON DRIVE BEAVERTON, OR 97006 USA	
TOLERANCES:		DRAWN BY	27 Nov 17		
X= ±1	XX= ±.25	CHECKED BY	27 Nov 17	TITLE <b>CLARITY MATRIX MX/LX55X-L 3x3 MOUNT BRACKET LAYOUT</b>	
.X= ±.5	∠= ±1°	USED ON			
DIMENSIONING AND TOLERANCING PER ASME Y14.5M-1994		MATERIAL		SIZE	PART NO.
THIRD ANGLE PROJECTION		FINISH		DRAWING NO.	REV
				D	-
THIS DRAWING CONTAINS INFORMATION PROPRIETARY TO PLANAR SYSTEMS, INC. ANY REPRODUCTION IN PART OR WHOLE WITHOUT THE WRITTEN PERMISSION OF PLANAR SYSTEMS IS PROHIBITED. THIS DRAWING IS SUPPLIED FOR INFORMATION, IDENTIFICATION, ENGINEERING, EVALUATION, AND/OR INSPECTION PURPOSES ONLY AND MAY NOT BE USED AS BASIS FOR THE MANUFACTURING OF PRODUCTS OR THE FURNISHING OF SERVICES TO PLANAR SYSTEMS OR TO ANY THIRD PARTY UNLESS AUTHORIZED IN WRITING BY PLANAR SYSTEMS.		SCALE	1:6	DO NOT SCALE	SHEET 5 OF 8





THIS DRAWING CONTAINS INFORMATION PROPRIETARY TO PLANAR SYSTEMS, INC., ANY REPRODUCTION IN PART OR WHOLE WITHOUT THE WRITTEN PERMISSION OF PLANAR SYSTEMS, INC. IS PROHIBITED. THIS DRAWING IS SUPPLIED FOR INFORMATION, IDENTIFICATION, ENGINEERING, EVALUATION, AND/OR INSPECTION PURPOSES ONLY AND MAY NOT BE USED AS BASIS FOR THE MANUFACTURING OF PRODUCTS OR THE FURNISHING OF SERVICES TO PLANAR SYSTEMS OR TO ANY THIRD PARTY UNLESS AUTHORIZED IN WRITING BY PLANAR SYSTEMS, INC.



D

C

B

A

D

C

B

A

2. ROTATE 90° CLOCKWISE AS VIEWED FROM THE FRONT FOR PORTRAIT ORIENTATION.
1. SPECIFICATIONS SUBJECT TO CHANGE WITHOUT NOTICE.
- NOTES: UNLESS OTHERWISE SPECIFIED.

UNLESS OTHERWISE SPECIFIED: DIMENSIONS ARE IN MILLIMETERS [INCHES]		ENGR BY	27 Nov 17	<b>PLANAR</b> PLANAR SYSTEMS, INC. 1195 NW COMPTON DRIVE BEAVERTON, OR 97006 USA	
TOLERANCES:		DRAWN BY	27 Nov 17		
X= ±1	XX= ±.25	CHECKED BY	27 Nov 17		
.X= ±.5	∠= ±1°	USED ON			
DIMENSIONING AND TOLERANCING PER ASME Y14.5M-1994		MATERIAL		TITLE	
THIRD ANGLE PROJECTION		FINISH		CLARITY MATRIX MX/LX55X VESA INSTALL OUTLINE	
SIZE		PART NO.	-	DRAWING NO.	REV
SCALE		1:6	DO NOT SCALE	SHEET	8 OF 8

THIS DRAWING CONTAINS INFORMATION PROPRIETARY TO PLANAR SYSTEMS, INC. ANY REPRODUCTION IN PART OR WHOLE WITHOUT THE WRITTEN PERMISSION OF PLANAR SYSTEMS IS PROHIBITED. THIS DRAWING IS SUPPLIED FOR INFORMATION, IDENTIFICATION, ENGINEERING, EVALUATION, AND/OR INSPECTION PURPOSES ONLY AND MAY NOT BE USED AS BASIS FOR THE MANUFACTURING OF PRODUCTS OR THE FURNISHING OF SERVICES TO PLANAR SYSTEMS OR TO ANY THIRD PARTY UNLESS AUTHORIZED IN WRITING BY PLANAR SYSTEMS.