

5.

WALL DIMENSIONS (mm/in)							
ROWS	COLUMNS	HEIGHT		WIDTH		DIAGONAL	
2	2	1155.5	45.49	2046.3	80.56	2350.0	92.52
2	3	1155.5	45.49	3070.7	120.89	3280.9	129.17
3	3	1734.5	68.29	3070.7	120.89	3526.7	138.85
3	4	1734.5	68.29	4095.0	161.22	4447.2	175.09
4	4	2313.4	91.08	4095.0	161.22	4703.3	185.17
5	5	2892.4	113.87	5119.4	201.55	5880.0	231.49

4. IT IS RECOMMENDED THAT FOR FLUSH MOUNT WALLS, A MINIMUM OF 13mm (0.5") GAP BE LEFT AT THE SIDES AND A MINIMUM OF 25mm (1.0") GAP BE LEFT AT THE BOTTOM. SEE PAGE ONE FOR TOP GAP RECOMMENDATIONS.

3. IT IS RECOMMENDED THAT A MINIMUM OF 5 FEET OF CABLE IS AVAILABLE FOR PANELS NEXT TO THE CONDUIT OPENING. MORE WILL BE NEEDED FOR PANELS FARTHER AWAY.

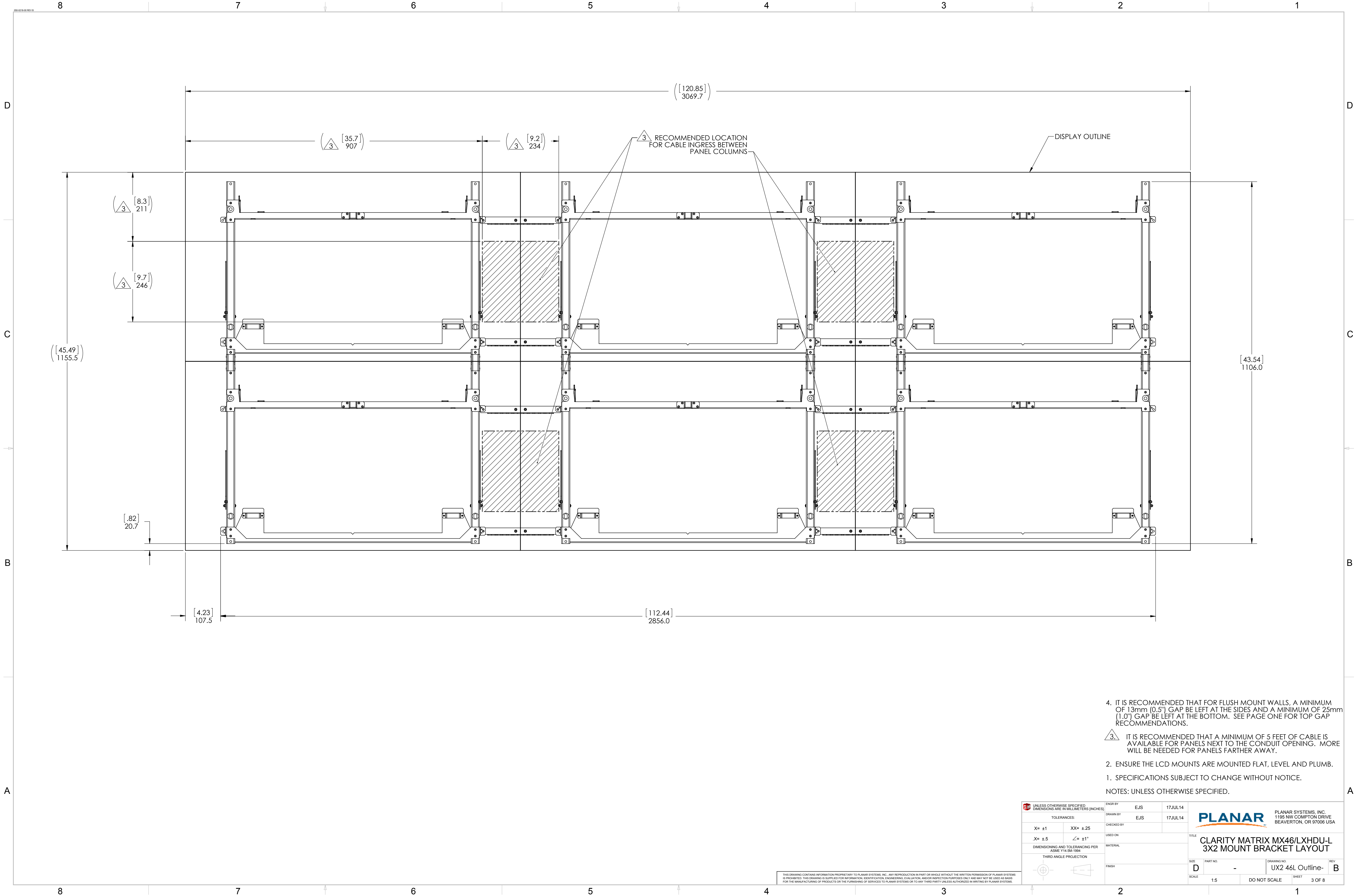
2. ENSURE THE LCD MOUNTS ARE MOUNTED FLAT, LEVEL AND PLUMB.

1. SPECIFICATIONS SUBJECT TO CHANGE WITHOUT NOTICE.

NOTES: UNLESS OTHERWISE SPECIFIED.

UNLESS OTHERWISE SPECIFIED, DIMENSIONS ARE IN MILLIMETERS (INCHES)		ENGR BY EJS 17JUL14	PLANAR SYSTEMS, INC. 1195 NW COMPTON DRIVE BEAVERTON, OR 97006 USA			
TOLERANCES:		DRAWN BY EJS 17JUL14	TITLE <b>CLARITY MATRIX MX/LX46HDU-L MOUNT BRACKET LAYOUT</b>			
X= ±1	XX= ±25	CHECKED BY				
.X= ±.5	∠= ±1°	USED ON	SIZE D	PART NO. -	DRAWING NO. UX2 46L Outline-	REV B
DIMENSIONING AND TOLERANCING PER ASME Y14.5M-1994		MATERIAL	SCALE 1:5	DO NOT SCALE	SHEET 2 OF 8	
THIRD ANGLE PROJECTION		FINISH				

THIS DRAWING CONTAINS INFORMATION PROPRIETARY TO PLANAR SYSTEMS, INC. ANY REPRODUCTION IN PART OR WHOLE WITHOUT THE WRITTEN PERMISSION OF PLANAR SYSTEMS IS PROHIBITED. THIS DRAWING IS SUPPLIED FOR INFORMATION, IDENTIFICATION, ENGINEERING, EVALUATION, AND/OR INSPECTION PURPOSES ONLY AND MAY NOT BE USED AS BASIS FOR THE MANUFACTURING OF PRODUCTS OR THE FURNISHING OF SERVICES TO PLANAR SYSTEMS OR TO ANY THIRD PARTY UNLESS AUTHORIZED IN WRITING BY PLANAR SYSTEMS.



4. IT IS RECOMMENDED THAT FOR FLUSH MOUNT WALLS, A MINIMUM OF 13mm (0.5") GAP BE LEFT AT THE SIDES AND A MINIMUM OF 25mm (1.0") GAP BE LEFT AT THE BOTTOM. SEE PAGE ONE FOR TOP GAP RECOMMENDATIONS.

3. IT IS RECOMMENDED THAT A MINIMUM OF 5 FEET OF CABLE IS AVAILABLE FOR PANELS NEXT TO THE CONDUIT OPENING. MORE WILL BE NEEDED FOR PANELS FARTHER AWAY.

2. ENSURE THE LCD MOUNTS ARE MOUNTED FLAT, LEVEL AND PLUMB.

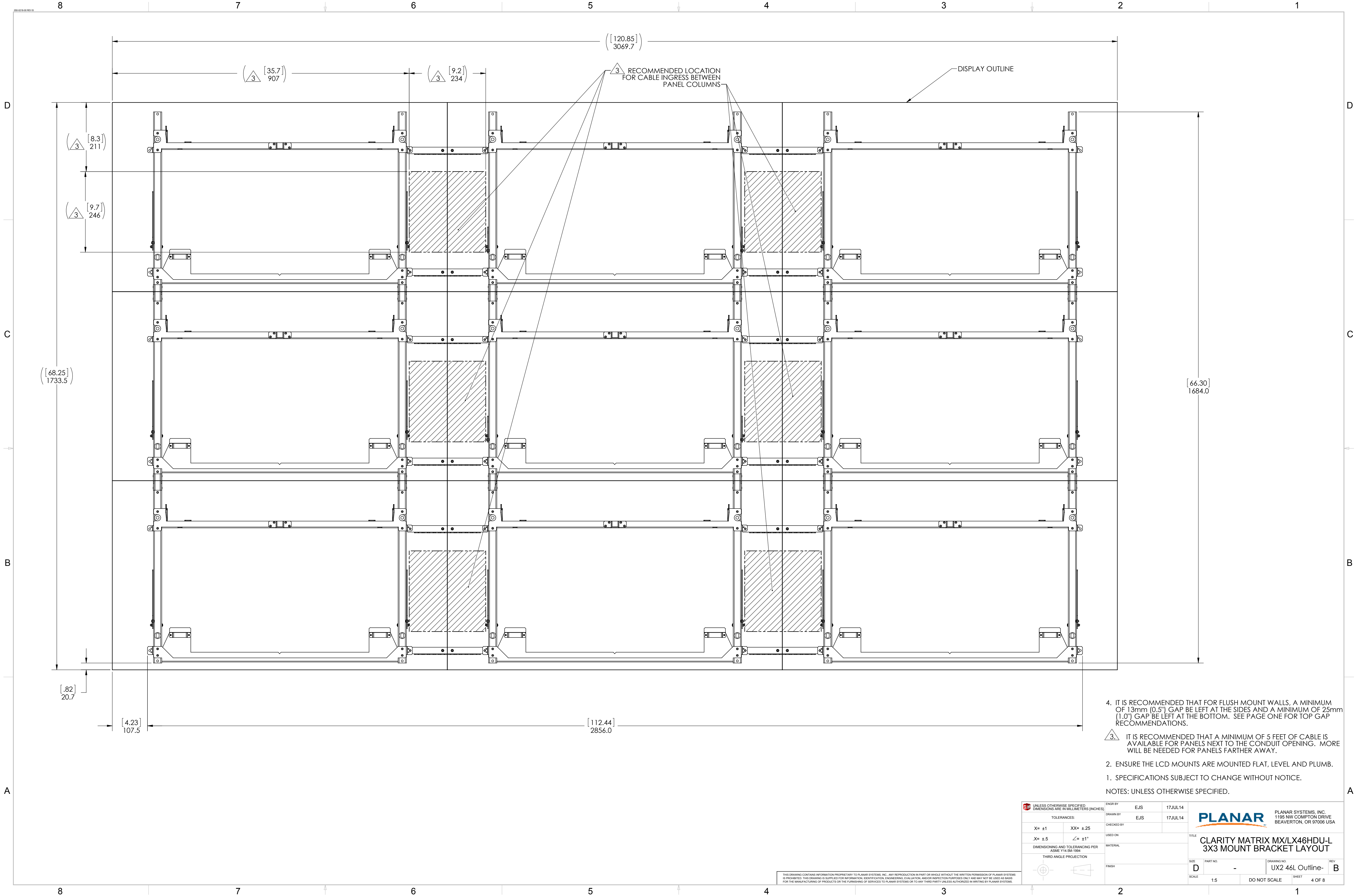
1. SPECIFICATIONS SUBJECT TO CHANGE WITHOUT NOTICE.

NOTES: UNLESS OTHERWISE SPECIFIED.

UNLESS OTHERWISE SPECIFIED, DIMENSIONS ARE IN MILLIMETERS (INCHES)		ENGR BY	EJS	17JUL14	PLANAR PLANAR SYSTEMS, INC. 1195 NW COMPTON DRIVE BEAVERTON, OR 97006 USA	
TOLERANCES:		DRAWN BY	EJS	17JUL14		
X= ±1	XX= ±.25	CHECKED BY			TITLE	
.X= ±.5	∠= ±1°	USED ON			CLARITY MATRIX MX46/LXHDU-L 3X2 MOUNT BRACKET LAYOUT	
DIMENSIONING AND TOLERANCING PER ASME Y14.5M-1994		MATERIAL			SIZE	PART NO.
THIRD ANGLE PROJECTION		FINISH			D	-
					SCALE	1:5
					DO NOT SCALE	SHEET
					3 OF 8	REV
						B

THIS DRAWING CONTAINS INFORMATION PROPRIETARY TO PLANAR SYSTEMS, INC. ANY REPRODUCTION IN PART OR WHOLE WITHOUT THE WRITTEN PERMISSION OF PLANAR SYSTEMS IS PROHIBITED. THIS DRAWING IS SUPPLIED FOR INFORMATION, IDENTIFICATION, ENGINEERING, EVALUATION, AND/OR INSPECTION PURPOSES ONLY AND MAY NOT BE USED AS BASIS FOR THE MANUFACTURING OF PRODUCTS OR THE FURNISHING OF SERVICES TO PLANAR SYSTEMS OR TO ANY THIRD PARTY UNLESS AUTHORIZED IN WRITING BY PLANAR SYSTEMS.





4. IT IS RECOMMENDED THAT FOR FLUSH MOUNT WALLS, A MINIMUM OF 13mm (0.5") GAP BE LEFT AT THE SIDES AND A MINIMUM OF 25mm (1.0") GAP BE LEFT AT THE BOTTOM. SEE PAGE ONE FOR TOP GAP RECOMMENDATIONS.

3. IT IS RECOMMENDED THAT A MINIMUM OF 5 FEET OF CABLE IS AVAILABLE FOR PANELS NEXT TO THE CONDUIT OPENING. MORE WILL BE NEEDED FOR PANELS FARTHER AWAY.

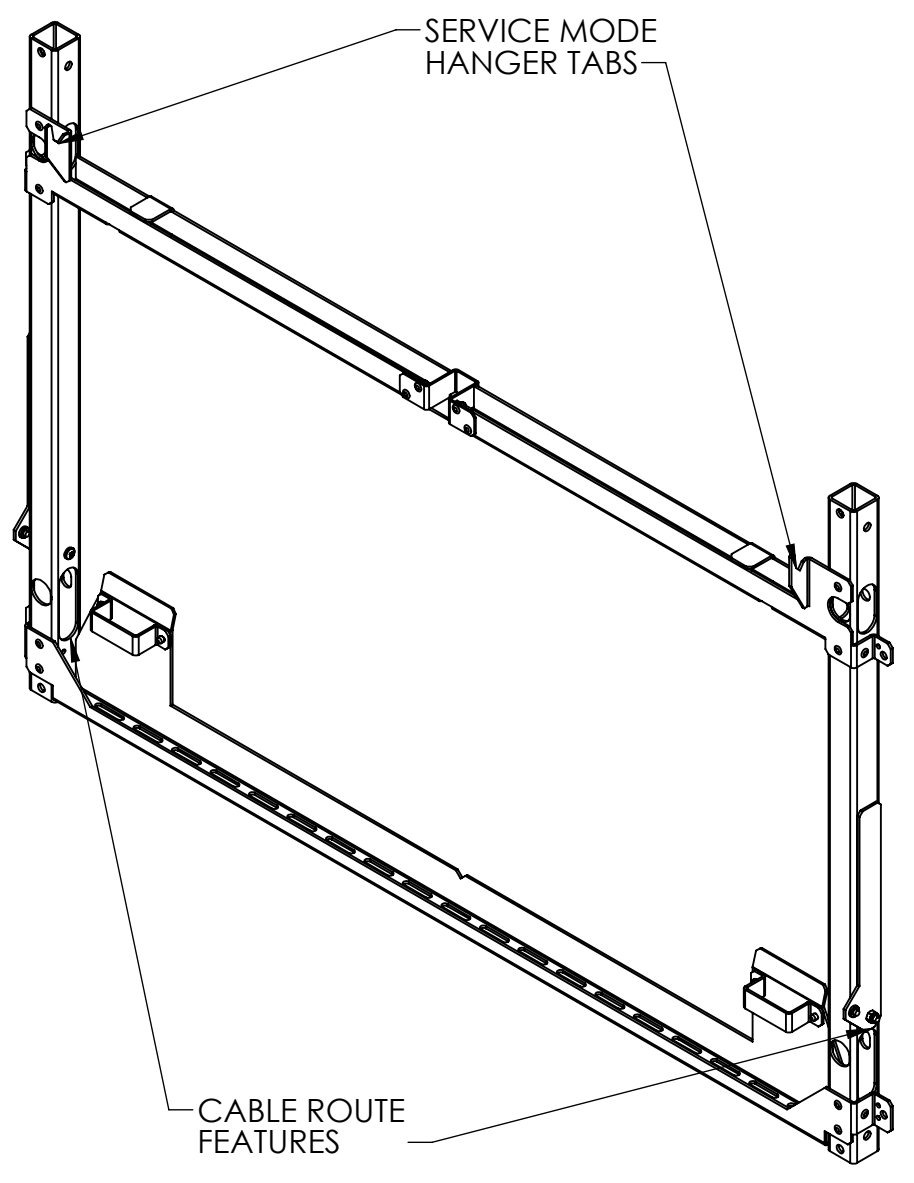
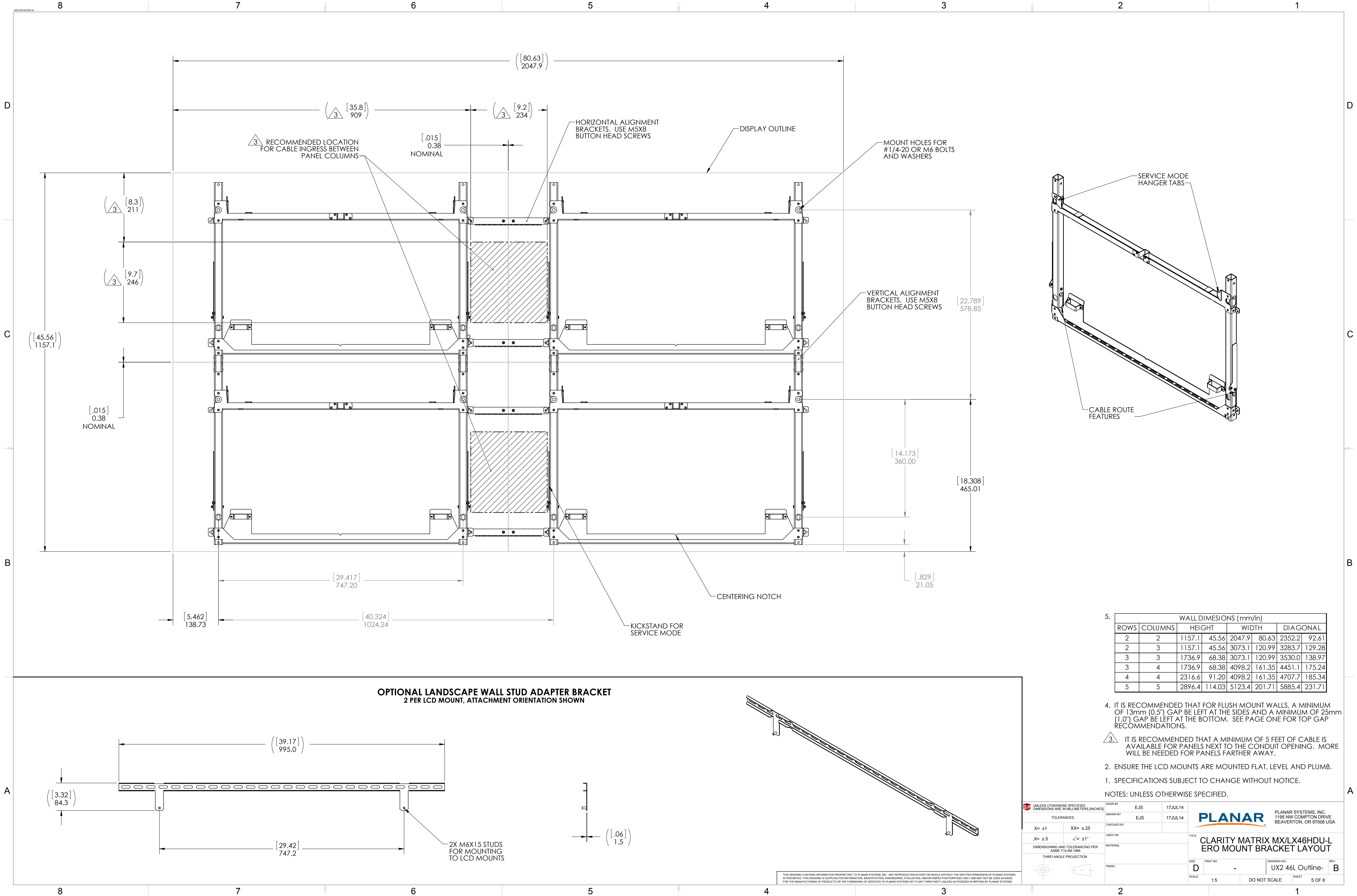
2. ENSURE THE LCD MOUNTS ARE MOUNTED FLAT, LEVEL AND PLUMB.

1. SPECIFICATIONS SUBJECT TO CHANGE WITHOUT NOTICE.

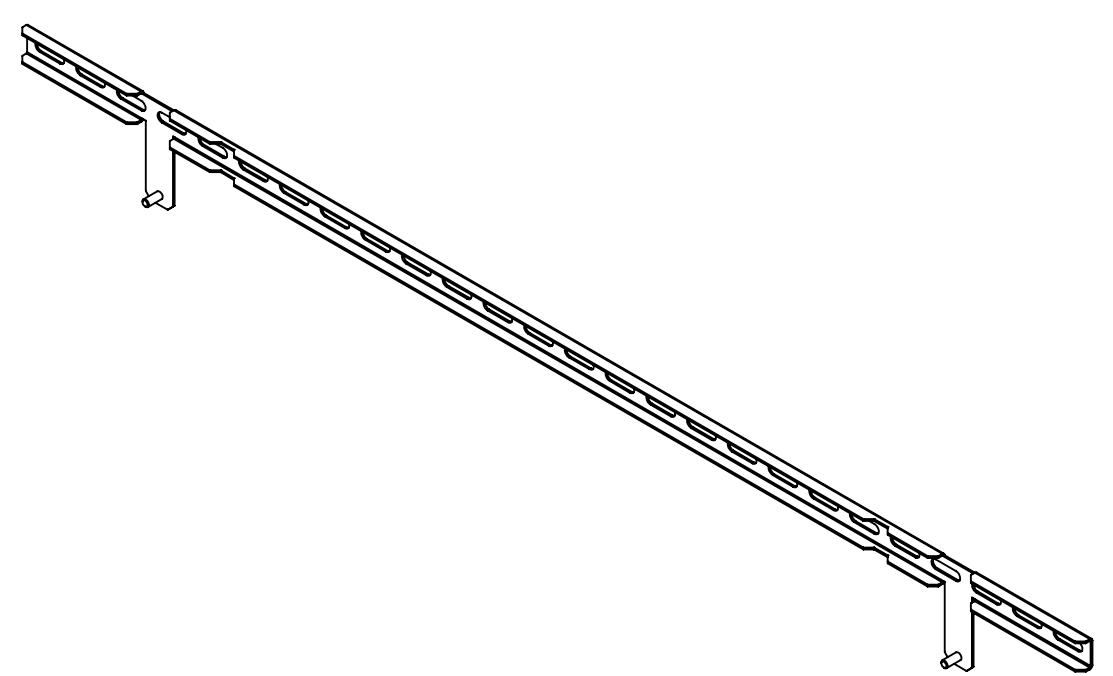
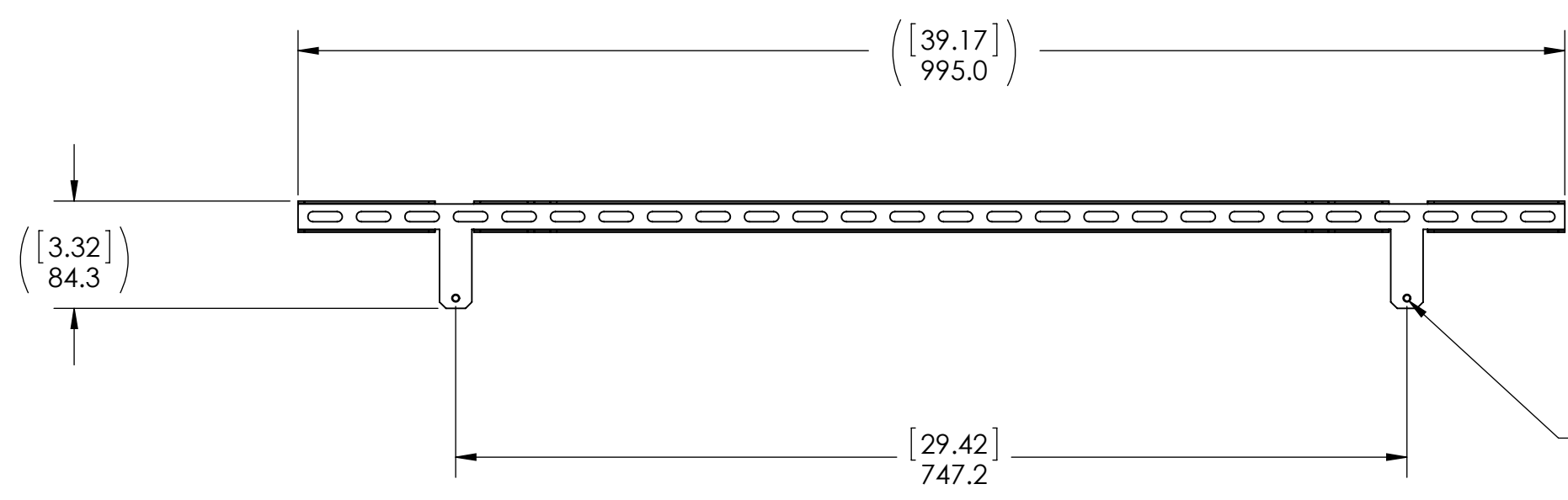
NOTES: UNLESS OTHERWISE SPECIFIED.

UNLESS OTHERWISE SPECIFIED, DIMENSIONS ARE IN MILLIMETERS (INCHES)		ENGR BY	EJS	17JUL14	<b>PLANAR</b> PLANAR SYSTEMS, INC. 1195 NW COMPTON DRIVE BEAVERTON, OR 97006 USA	TITLE <b>CLARITY MATRIX MX/LX46HDU-L 3X3 MOUNT BRACKET LAYOUT</b>
TOLERANCES:		DRAWN BY	EJS	17JUL14		
X= ±1	XX= ±.25	CHECKED BY				
.X= ±.5	∠= ±1°	USED ON				
DIMENSIONING AND TOLERANCING PER ASME Y14.5M-1994		MATERIAL			SIZE	PART NO.
THIRD ANGLE PROJECTION		FINISH			D	-
					SCALE	1:5
					DO NOT SCALE	SHEET
					4 OF 8	REV
						B

THIS DRAWING CONTAINS INFORMATION PROPRIETARY TO PLANAR SYSTEMS, INC. ANY REPRODUCTION IN PART OR WHOLE WITHOUT THE WRITTEN PERMISSION OF PLANAR SYSTEMS IS PROHIBITED. THIS DRAWING IS SUPPLIED FOR INFORMATION, IDENTIFICATION, ENGINEERING, EVALUATION, AND/OR INSPECTION PURPOSES ONLY AND MAY NOT BE USED AS BASIS FOR THE MANUFACTURING OF PRODUCTS OR THE FURNISHING OF SERVICES TO PLANAR SYSTEMS OR TO ANY THIRD PARTY UNLESS AUTHORIZED IN WRITING BY PLANAR SYSTEMS.



**OPTIONAL LANDSCAPE WALL STUD ADAPTER BRACKET**  
2 PER LCD MOUNT, ATTACHMENT ORIENTATION SHOWN



5.

WALL DIMENSIONS (mm/in)							
ROWS	COLUMNS	HEIGHT		WIDTH		DIAGONAL	
2	2	1157.1	45.56	2047.9	80.63	2352.2	92.61
2	3	1157.1	45.56	3073.1	120.99	3283.7	129.28
3	3	1736.9	68.38	3073.1	120.99	3530.0	138.97
3	4	1736.9	68.38	4098.2	161.35	4451.1	175.24
4	4	2316.6	91.20	4098.2	161.35	4707.7	185.34
5	5	2896.4	114.03	5123.4	201.71	5885.4	231.71

4. IT IS RECOMMENDED THAT FOR FLUSH MOUNT WALLS, A MINIMUM OF 13mm (0.5") GAP BE LEFT AT THE SIDES AND A MINIMUM OF 25mm (1.0") GAP BE LEFT AT THE BOTTOM. SEE PAGE ONE FOR TOP GAP RECOMMENDATIONS.

3. IT IS RECOMMENDED THAT A MINIMUM OF 5 FEET OF CABLE IS AVAILABLE FOR PANELS NEXT TO THE CONDUIT OPENING. MORE WILL BE NEEDED FOR PANELS FARTHER AWAY.

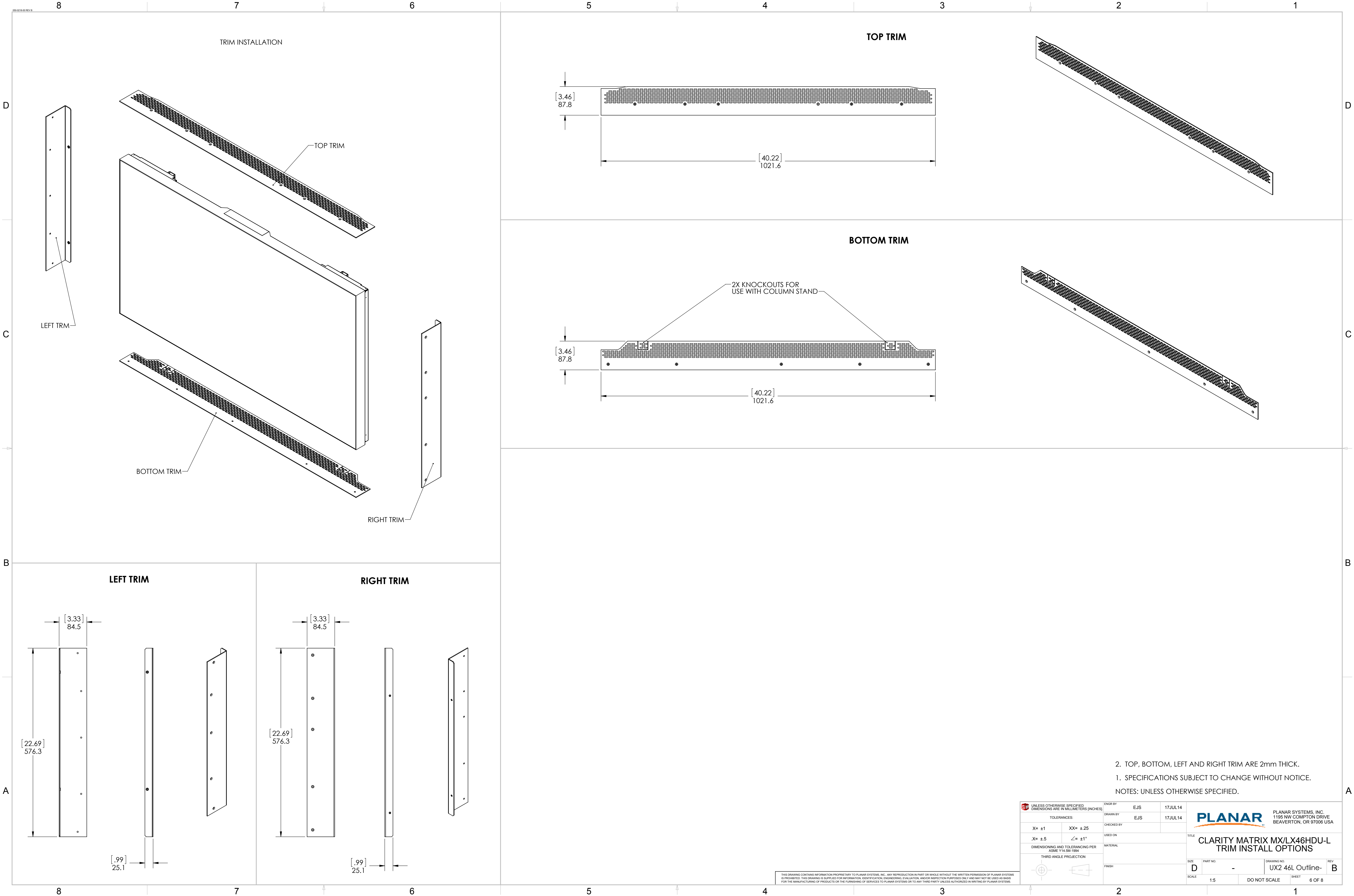
2. ENSURE THE LCD MOUNTS ARE MOUNTED FLAT, LEVEL AND PLUMB.

1. SPECIFICATIONS SUBJECT TO CHANGE WITHOUT NOTICE.

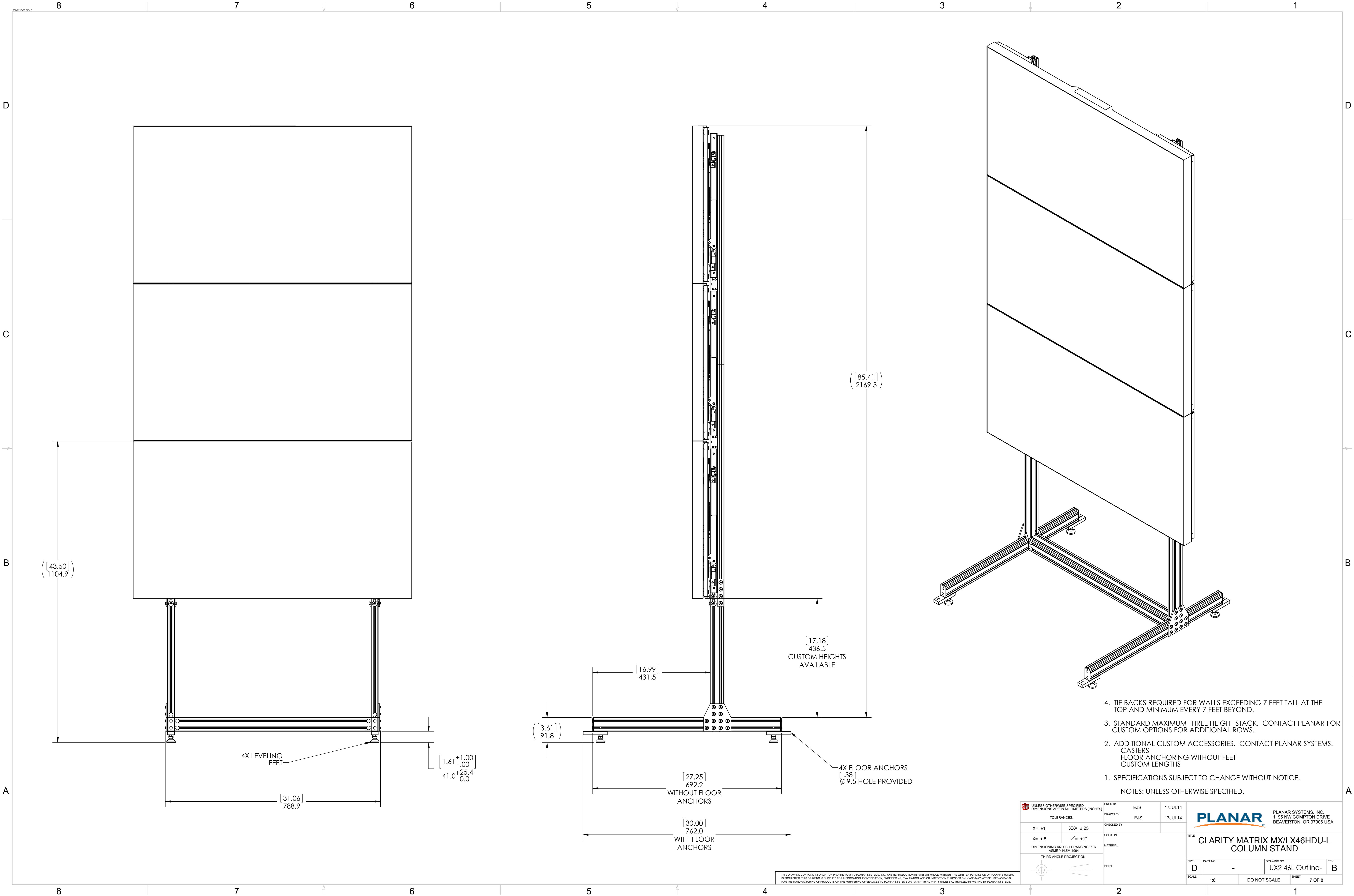
NOTES: UNLESS OTHERWISE SPECIFIED.

UNLESS OTHERWISE SPECIFIED, DIMENSIONS ARE IN MILLIMETERS (INCHES)		ENGR BY EJS 17JUL14		PLANAR SYSTEMS, INC. 1195 NW COMPTON DRIVE BEAVERTON, OR 97006 USA
TOLERANCES:		DRAWN BY EJS 17JUL14		
X= ±1	XX= ±25	CHECKED BY	USED ON	TITLE CLARITY MATRIX MX/LX46HDU-L ERO MOUNT BRACKET LAYOUT
.X= ±.5	∠= ±1°	MATERIAL		REV B
DIMENSIONING AND TOLERANCING PER ASME Y14.5M-1994		FINISH		SIZE D
THIRD ANGLE PROJECTION		SCALE 1:5		DRAWING NO. UX2 46L Outline-
		DO NOT SCALE		SHEET 5 OF 8

THIS DRAWING CONTAINS INFORMATION PROPRIETARY TO PLANAR SYSTEMS, INC. ANY REPRODUCTION IN PART OR WHOLE WITHOUT THE WRITTEN PERMISSION OF PLANAR SYSTEMS IS PROHIBITED. THIS DRAWING IS SUPPLIED FOR INFORMATION, IDENTIFICATION, ENGINEERING, EVALUATION, AND/OR INSPECTION PURPOSES ONLY AND MAY NOT BE USED AS BASIS FOR THE MANUFACTURING OF PRODUCTS OR THE FURNISHING OF SERVICES TO PLANAR SYSTEMS OR TO ANY THIRD PARTY UNLESS AUTHORIZED IN WRITING BY PLANAR SYSTEMS.

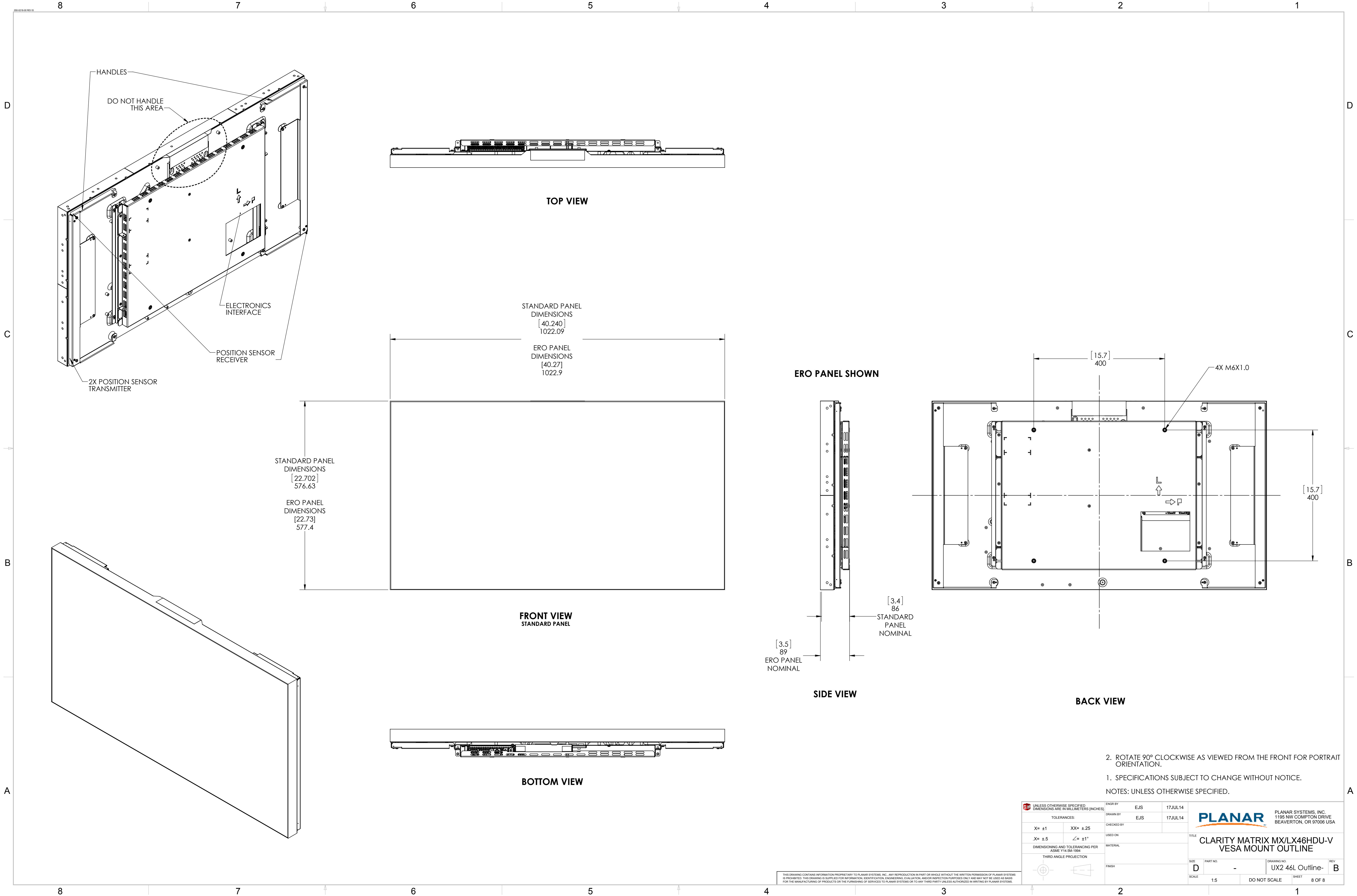






THIS DRAWING CONTAINS INFORMATION PROPRIETARY TO PLANAR SYSTEMS, INC. ANY REPRODUCTION IN PART OR WHOLE WITHOUT THE WRITTEN PERMISSION OF PLANAR SYSTEMS IS PROHIBITED. THIS DRAWING IS SUPPLIED FOR INFORMATION, IDENTIFICATION, ENGINEERING, EVALUATION, AND/OR INSPECTION PURPOSES ONLY AND MAY NOT BE USED AS BASIS FOR THE MANUFACTURING OF PRODUCTS OR THE FURNISHING OF SERVICES TO PLANAR SYSTEMS OR TO ANY THIRD PARTY UNLESS AUTHORIZED IN WRITING BY PLANAR SYSTEMS.

UNLESS OTHERWISE SPECIFIED DIMENSIONS ARE IN MILLIMETERS (INCHES)		ENGR BY EJS	17JUL14	<b>PLANAR</b> PLANAR SYSTEMS, INC. 1195 NW COMPTON DRIVE BEAVERTON, OR 97006 USA
TOLERANCES:		DRAWN BY EJS	17JUL14	
X= ±1	XX= ±.25	CHECKED BY		
.X= ±.5	∠= ±1°	USED ON		
DIMENSIONING AND TOLERANCING PER ASME Y14.5M-1994		MATERIAL		TITLE <b>CLARITY MATRIX MX/LX46HDU-L COLUMN STAND</b>
THIRD ANGLE PROJECTION		FINISH		
SIZE D	PART NO. -	DRAWING NO. UX2 46L Outline-	REV B	
SCALE 1:6	DO NOT SCALE	SHEET 7 OF 8		



2. ROTATE 90° CLOCKWISE AS VIEWED FROM THE FRONT FOR PORTRAIT ORIENTATION.
1. SPECIFICATIONS SUBJECT TO CHANGE WITHOUT NOTICE.
- NOTES: UNLESS OTHERWISE SPECIFIED.

<div><div><div></div></div><div>UNLESS OTHERWISE SPECIFIED: DIMENSIONS ARE IN MILLIMETERS [INCHES]</div></div>		ENGR BY EJS 17JUL14	<div><div>PLANAR</div><div>PLANAR SYSTEMS, INC. 1195 NW COMPTON DRIVE BEAVERTON, OR 97006 USA</div></div>	
TOLERANCES:		DRAWN BY EJS 17JUL14		
X= ±1	XX= ±.25	CHECKED BY		
X= ±.5	∠= ±1°	USED ON		
DIMENSIONING AND TOLERANCING PER ASME Y14.5M-1994	MATERIAL	TITLE CLARITY MATRIX MX/LX46HDU-V VESA MOUNT OUTLINE		
THIRD ANGLE PROJECTION	FINISH	REV		
<div><div><div></div></div><div></div></div>	SIZE D	PART NO. -	DRAWING NO. UX2 46L Outline-	B
SCALE 1:5		DO NOT SCALE		SHEET 8 OF 8

THIS DRAWING CONTAINS INFORMATION PROPRIETARY TO PLANAR SYSTEMS, INC. ANY REPRODUCTION IN PART OR WHOLE WITHOUT THE WRITTEN PERMISSION OF PLANAR SYSTEMS IS PROHIBITED. THIS DRAWING IS SUPPLIED FOR INFORMATION, IDENTIFICATION, ENGINEERING, EVALUATION, AND/OR INSPECTION PURPOSES ONLY AND MAY NOT BE USED AS BASIS FOR THE MANUFACTURING OF PRODUCTS OR THE FURNISHING OF SERVICES TO PLANAR SYSTEMS OR TO ANY THIRD PARTY UNLESS AUTHORIZED IN WRITING BY PLANAR SYSTEMS.