



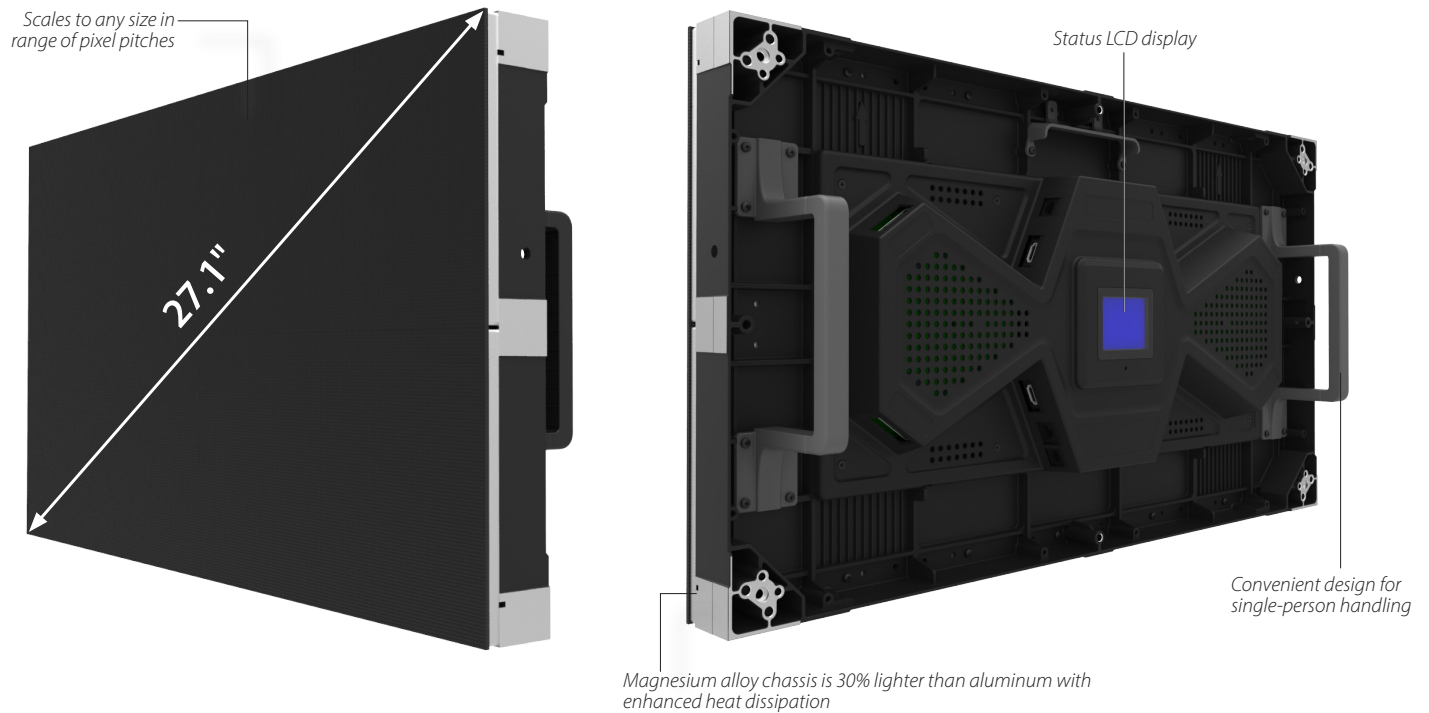
Light-Weight and Versatile Fine Pitch LED Performance

The Leyard® TWS Series is a family of versatile ultra-fine pitch LED video wall displays available in 0.9, 1.2, 1.5 and 1.8 millimeter pixel pitches. Featuring a convenient 27" diagonal size, the all-in-one design fits a broad range of fine-pitch installation environments. The Leyard TWS Series is light weight and easy to handle enabling it to be an attractive solution for faceted curved video walls, hanging video walls or traditional video walls favoring a compact fine pitch solution.

The Leyard TWS Series features pixel pitches and optical performance well suited for demanding visual applications and offers options for redundant video cabling and power. The Leyard TWS Series features a 16:9 aspect ratio and exactly achieves popular resolutions at every pitch. For a wide range of high resolution applications, the Leyard TWS Series is an ideal fixed installation solution.

Fits More Installation Environments

Leyard TWS Series 27" LED video wall displays feature an all-in-one, simple-to-deploy design that enhances application possibilities and improves installation efficiency. Delivering 16:9 aspect ratio, the Leyard TWS Series perfectly hits Full HD, 4K and 8K resolutions. The Leyard TWS Series LED display size works well in small or large spaces, as well as for concave curved video walls. Constructed in light-weight, thermally-efficient magnesium alloy cabinet, the Leyard TWS Series provides improved heat dissipation and faster, easier single-person handling during installation.

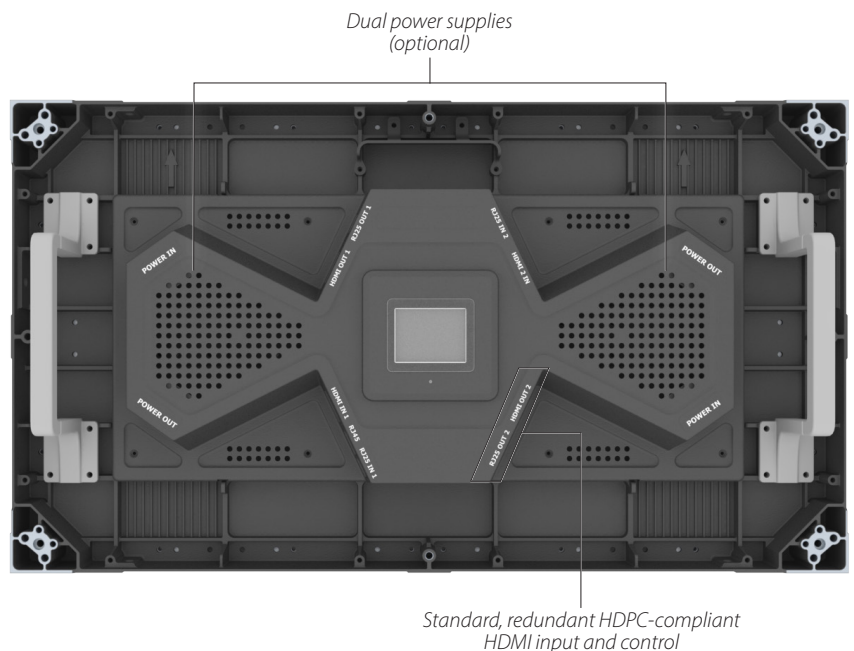


Compact, Reliable and Easy to Service

The Leyard TWS Series is architected to deliver what matters for quick installation and service. Every Leyard TWS Series display includes two standard HDMI input and loop-output pairs, meeting HDCP compliance and redundancy needs.

Leyard TWS Series LED displays are available with single or dual power supplies, with the dual power supply options adding a level of redundancy. For quick servicing, the Leyard TWS Series components can be accessed by removing the rear cover.

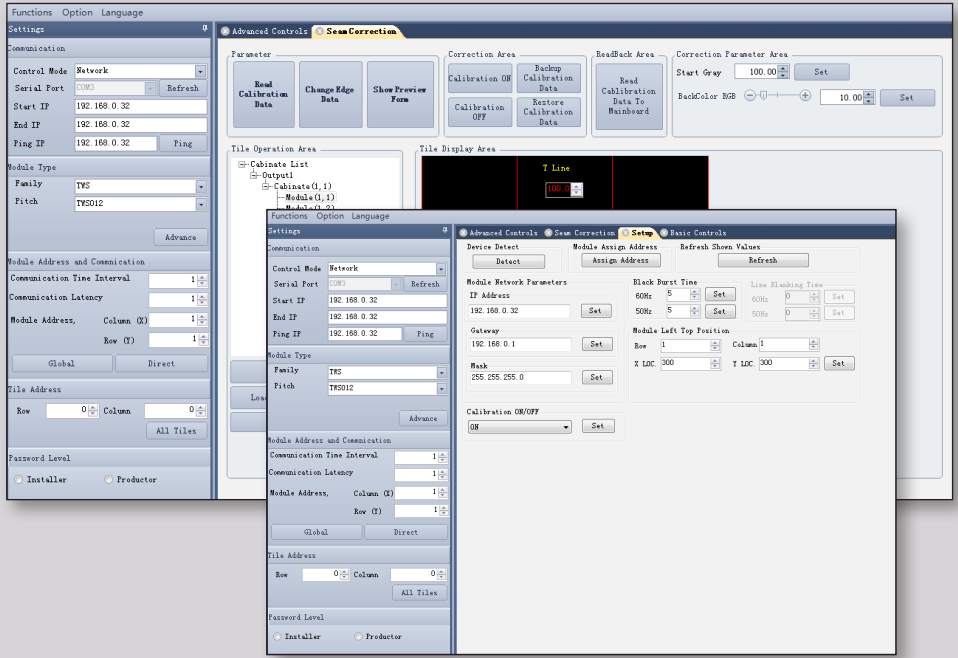
The Leyard TWS Series' compact, all-in-one design locates video power, control and redundancy in one location, requiring no external boxes or converters.



Comprehensive Image Control Capabilities

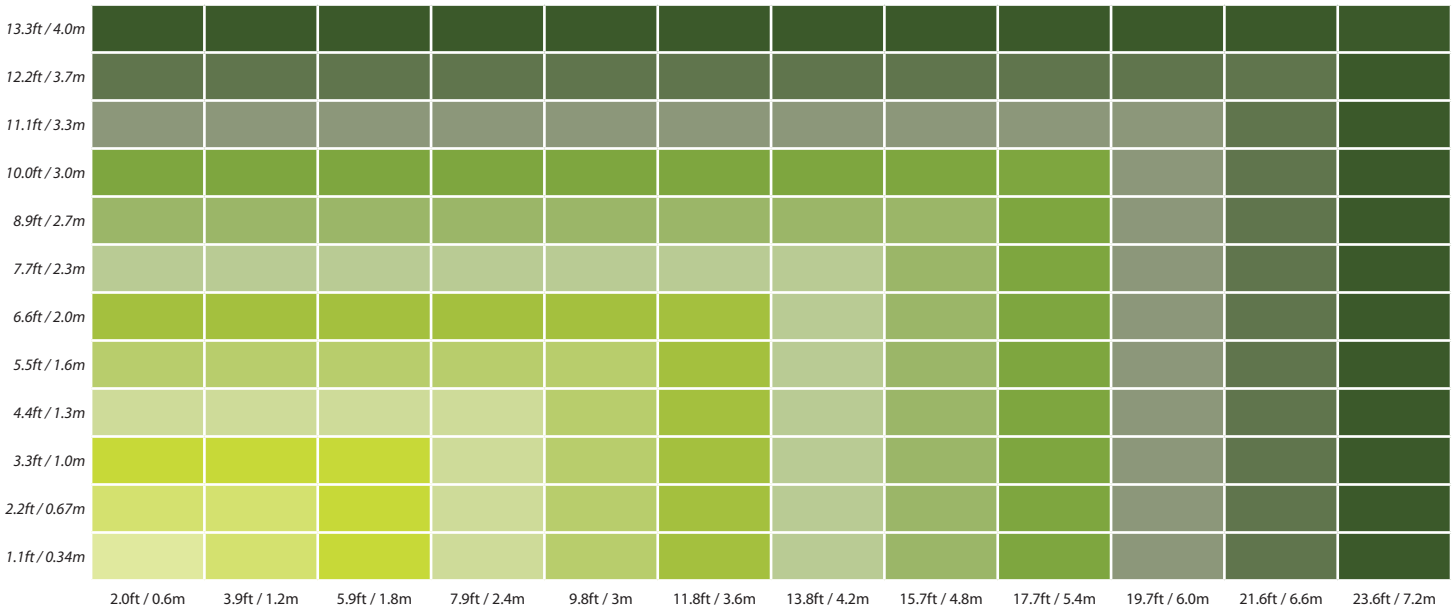
For LED video wall image control, the Leyard TWS Series uses Leyard® LED Control Software for image set-up and adjustment. The Windows®-based software communicates to the video wall via LAN, enabling set-up and control of parameters like brightness, RGB color space and gamma gray scale. It allows for electronic seam correction to optimize uniformity on even the most perfectly installed video walls.

Leyard TWS Series LED displays also support a serial command set that can be invoked via RS232 or LAN connection.



16:9 Aspect Ratio for Popular Resolutions

Leyard TWS Series displays feature a 16:9 aspect ratio that ensures every pixel pitch is designed to exactly achieve Full HD, 4K or 8K resolutions. Leyard TWS Series displays can also be configure in any video wall configuration to meet the widest range of application requirements.



Displays	1 x 1	2 x 2	3 x 3	4 x 4	5 x 5	6 x 6	7 x 7	8 x 8	9 x 9	10 x 10	11 x 11	12 x 12
TWS0.9	640 x 360	1280 x 720	1920 x 1080	2560 x 1440	3200 x 1800	3840 x 2160	4480 x 2520	5120 x 2880	5760 x 3240	6400 x 3600	7040 x 3960	7680 x 4320
TWS1.2	480 x 270	960 x 540	1440 x 810	1920 x 1080	2400 x 1350	2880 x 1620	3360 x 1890	3840 x 2160	4320 x 2430	4800 x 2700	5280 x 2970	5760 x 3240
TWS1.5	384 x 216	768 x 432	1152 x 648	1536 x 864	1920 x 1080	2304 x 1296	2688 x 1512	3072 x 1728	3456 x 1944	3840 x 2160	4224 x 2376	4608 x 2592
TWS1.8	320 x 180	640 x 360	960 x 540	1280 x 720	1600 x 900	1920 x 1080	2240 x 1260	2560 x 1440	2880 x 1620	3200 x 1800	3520 x 1980	3840 x 2160



1920 x 1080



3840 x 2160

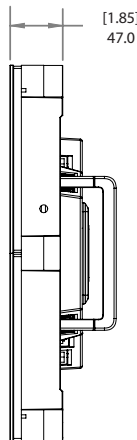


7680 x 4320

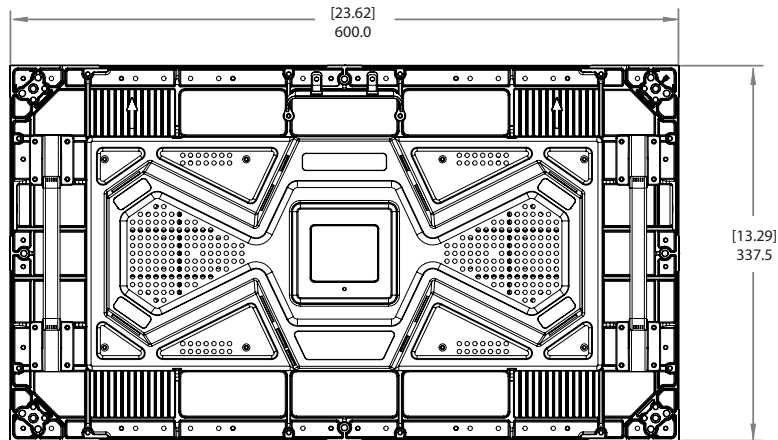
LEYARD TWS SERIES SPECIFICATIONS

Product Name	TWS0.9	TWS1.2	TWS1.5	TWS1.8
Pixel Pitch	0.9375mm	1.25mm	1.5625mm	1.875mm
Display Resolution	640 x 360	480 x 270	384 x 216	320 x 180
Pixel Density (pixels)	1,137,777 / sq m 105,700 / sq ft	640,000 / sq m 59,450 / sq ft	409,600 / sq m 38,050 / sq ft	284,444 / sq m 26,422 / sq ft
LED Type	Commercial grade 3-in-1 Black SMD			
LED Surround	Black Solder Mask		Leyard® MicroGrid Shader™	
Brightness Max (cd/sq. m)	> 800			
Color Gamut	100% NTSC			
Contrast Ratio	> 6,000:1			
LED Refresh Rate	1920 Hz	3000Hz	3000Hz	3000Hz
Color Temperature, Adjustable (k)	3,200 - 9,300			
Brightness Uniformity	>97%			
Color Uniformity	>97%			
Viewing Angle, Horizontal	160°			
Viewing Angle, Vertical	140°			
LED Lifetime: Typical	100,000 hrs			
Display Size (W x H x D)	600 x 337.5 x 95mm 23.62 x 13.28 x 3.74in			
Display Weight (kg / display)	4.7 kg 10.4 lb			
Line Voltage	100-240 Volts AC, 50/60Hz autoranging			
Power Consumption, Max. (watts)	140 watts / Display 700 watts / sq m			
Power Consumption, Typ. (watts)	48 watts / Display 240 watts / sq m			
Acoustic Noise	Fanless Operation			
Operating Temperature/Humidity <i>(degrees F/C)</i> <i>10-80% relative humidity, non-condensing</i>	-10° to 40° C -14° to 104° F			
Video Inputs	2x HDMI in, 2x HDMI out			
HDCP Compliant	Yes			
Video Input Resolution Maximum	1920 x 1080 @ 60Hz			
Frame Rate	50, 60Hz			
Video Signal Extension Options	CAT6 and Fiber Optic			
Video Signal Redundancy	Optional			
Video Extension Redundancy	Optional			
Display Control	Leyard Control Software included			
Control Input Type	RS232 or Ethernet			
Regulatory Compliance	NRTL UL 60950-1, FCC Class A, CE EN60950-1, EN 55032 Class A and EN55024, WEEE, CISPR 32/2015			

Visit www.leyard.com for full list of product specifications.



SIDE VIEW



BACK VIEW

LEYARD

Leyard and Planar are trademarks of Leyard Optoelectronics Co., Ltd. and Planar Systems, Inc. All other trademarks and service marks are the property of their holders.

www.leyard.com

Copyright © 2016 Leyard Optoelectronics Co., Ltd. and Planar Systems, Inc. All rights reserved. This document may not be copied in any form without permission from Leyard or Planar. Information in this document is subject to change without notice. 10/17

North America
1-866-475-2627
sales@leyardgroup.com

EMEA
+421-918-436-961
sales.emea@leyardgroup.com

APAC
+86-755-29671180
info.asia@leyardgroup.com

Japan
+81-3-6915-2768
info.japan@leyardgroup.com

Latin America
+55-41-3059-5100
info.brazil@leyardgroup.com