



Planar & Leyard Open House & Training Event St. Louis

A showcase of the latest display innovations

October 5-6, 2016

Event Details

Where:

DoubleTree by Hilton
St. Louis Park
1500 Park Place Boulevard
St. Louis Park, MN 55416

Open House:

October 5-6th
9:00am - 5:00pm
Cocktail Hour to follow at 5pm

Certified Training Courses*

Clarity Matrix Certified Installer Training
Wednesday, October 5
9:00am - 3:00pm
Lunch will be provided

Fundamentals of Fine Pitch LED CTS Course
Thursday, October 6
10:00 - 11:00am; 2:00 - 3:00pm

*Seating is limited at training. Registration is required.

RSVP for Training by contacting:

Steve Johnson
416-258-1498
Steve.Johnson@planar.com

Products on Display

Join Planar and Leyard for product demonstrations at our St. Louis Open House & Training Event.



Leyard TWA Series

The Leyard® TWA Series is a line of fine pitch LED video walls with a unique "flat panel" design that features a 16:9 form factor, ease of installation and service, and outstanding flatness uniformity.



Leyard TVH Series

The Leyard® TVH Series is a line of high performance, fine pitch LED video walls available in 1.6, 1.9 and 2.5 millimeter pixel pitches that delivers industry-leading image quality and reliability. .



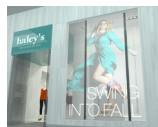
Planar DirectLight LED Video Wall System

The Planar® DirectLight™ LED Video Wall System is a family of seamless, ultra-fine pitch direct view LED video walls that provide a superior visual experience, and 24x7 reliability tailored to your unique indoor environment.



Clarity Matrix LCD Video Wall System

This immersive, flexible video wall combines the industry's thinnest profile ultra-narrow bezel LED LCD with improvements in design, installation and service, delivering on its reputation as the best-in-class LCD video wall solution.



Planar LookThru Transparent OLED Display

The first-of-its-kind Planar® LookThru™ OLED transparent display is a self-emitting display that utilizes cutting-edge Organic Light Emitting Diode (OLED) technology to eliminate the need for a backlight or enclosure, making it possible to create truly see-through installations.



Planar HD and 4K LCD Displays

Planar's large format displays are designed for demanding applications with high durability and performance requirements. From communicating information to enhancing ambiance, Planar's flat panel display monitor lines are the ideal complement to any retail store, lobby, control room, or other professional application.

