

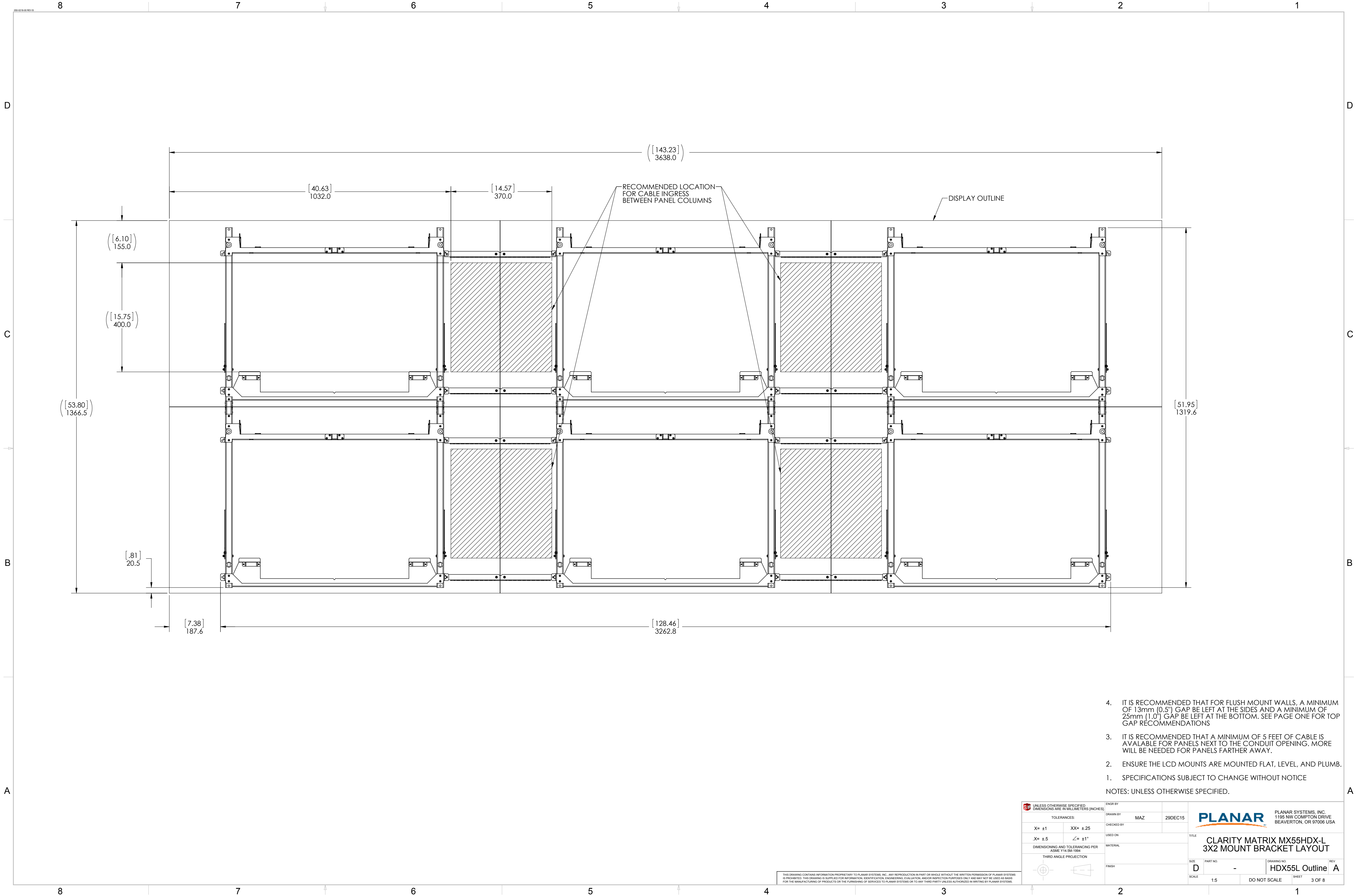
5.

		WALL DIMENSIONS (mm/in)				
ROWS	COLUMNS	HEIGHT	WIDTH	DIAGONAL		
2	2	1366.5	53.80	2424.9	95.47	2783.4
2	3	1366.5	53.80	3638.1	143.23	3886.3
3	3	2050.5	80.73	3638.1	143.23	4176.2
3	4	2050.5	80.73	4851.3	191.00	5266.8
4	4	2734.5	107.66	4851.3	191.00	5568.9
5	5	3418.5	134.59	6064.5	238.76	6961.6

4. IT IS RECOMMENDED THAT FOR FLUSH MOUNT WALLS, A MINIMUM OF 13mm (0.5") GAP BE LEFT AT THE SIDES AND A MINIMUM OF 25mm (1.0") GAP BE LEFT AT THE BOTTOM. SEE PAGE ONE FOR TOP GAP RECOMMENDATIONS
3. IT IS RECOMMENDED THAT A MINIMUM OF 5 FEET OF CABLE IS AVAILABLE FOR PANELS NEXT TO THE CONDUIT OPENING. MORE WILL BE NEEDED FOR PANELS FARTHER AWAY.
2. ENSURE THE LCD MOUNTS ARE MOUNTED FLAT, LEVEL, AND PLUMB.
1. SPECIFICATIONS SUBJECT TO CHANGE WITHOUT NOTICE
- NOTES: UNLESS OTHERWISE SPECIFIED.

UNLESS OTHERWISE SPECIFIED, DIMENSIONS ARE IN MILLIMETERS (INCHES)		ENG'D BY		DRAWN BY		CHECKED BY		DATE		TITLE	
TOLERANCES:		X= ±1		XX= ±.25		X= ±.5		Z= ±1"		MATERIAL	
DIMENSIONING AND TOLERANCING PER ASME Y14.5M-1994		THIRD ANGLE PROJECTION		FINISH		SIZE		PART NO.		DRAWING NO.	
D		1:5		DO NOT SCALE		HDX55L Outline		REV		A	
2 OF 8		2 OF 8		2 OF 8		2 OF 8		2 OF 8		2 OF 8	

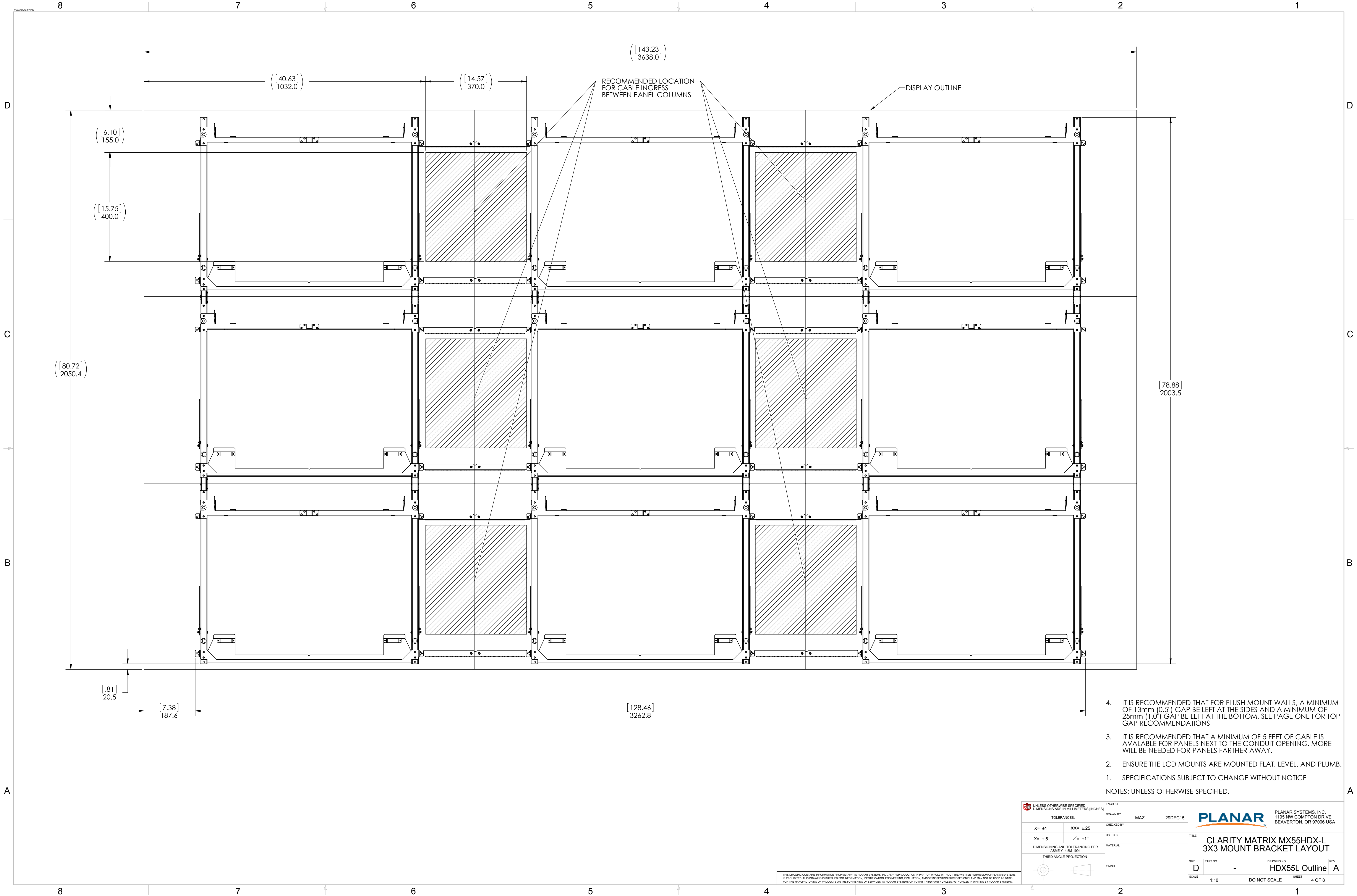
THIS DRAWING CONTAINS INFORMATION PROPRIETARY TO PLANAR SYSTEMS, INC. ANY REPRODUCTION IN PART OR WHOLE WITHOUT THE WRITTEN PERMISSION OF PLANAR SYSTEMS IS PROHIBITED. THIS DRAWING IS SUPPLIED FOR INFORMATION, IDENTIFICATION, ENGINEERING, EVALUATION, AND/OR INSPECTION PURPOSES ONLY AND MAY NOT BE USED AS BASIS FOR THE MANUFACTURING OF PRODUCTS OR THE FURNISHING OF SERVICES TO PLANAR SYSTEMS OR TO ANY THIRD PARTY UNLESS AUTHORIZED IN WRITING BY PLANAR SYSTEMS.

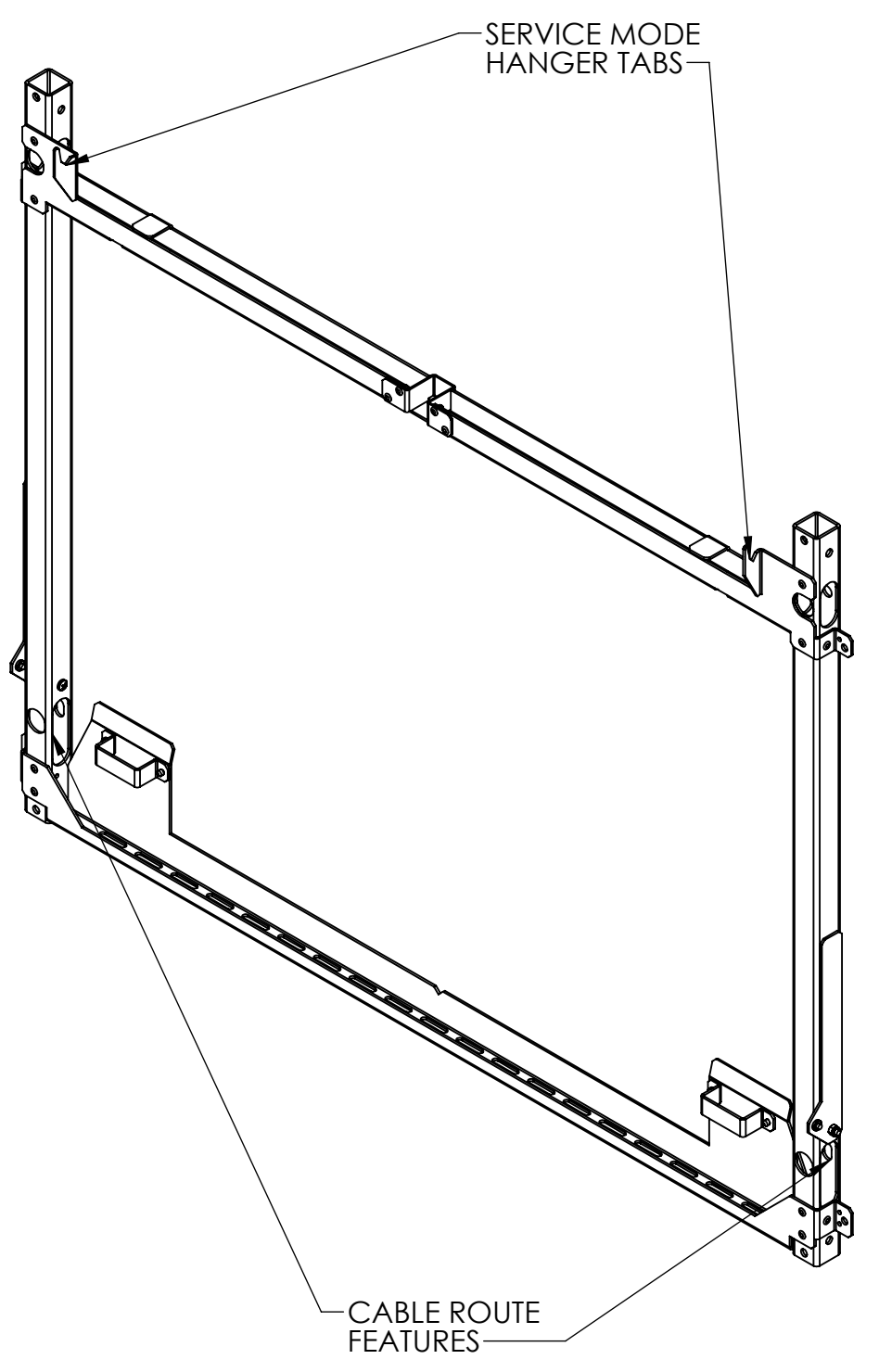
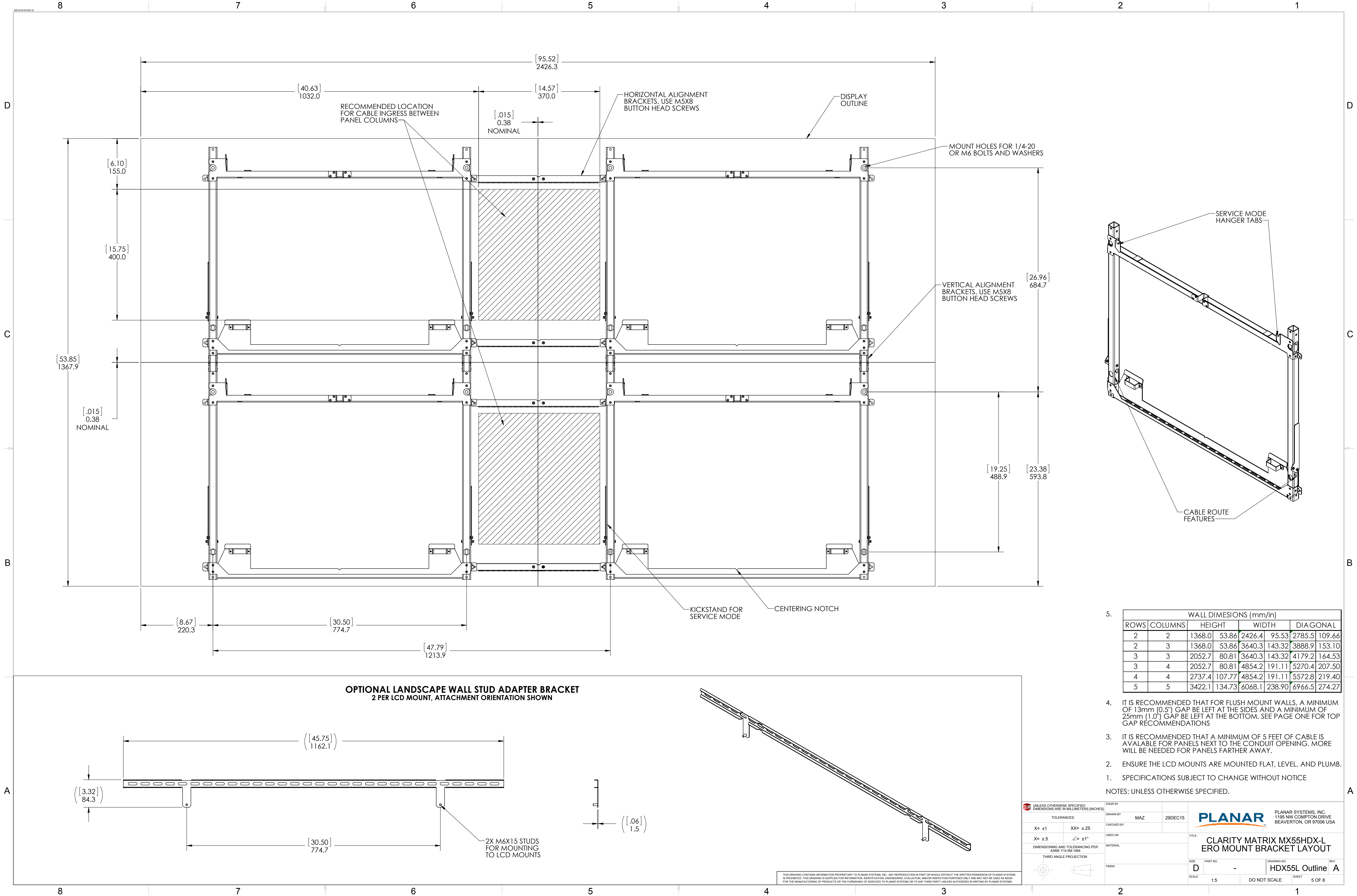


- IT IS RECOMMENDED THAT FOR FLUSH MOUNT WALLS, A MINIMUM OF 13mm (0.5") GAP BE LEFT AT THE SIDES AND A MINIMUM OF 25mm (1.0") GAP BE LEFT AT THE BOTTOM. SEE PAGE ONE FOR TOP GAP RECOMMENDATIONS
 - IT IS RECOMMENDED THAT A MINIMUM OF 5 FEET OF CABLE IS AVAILABLE FOR PANELS NEXT TO THE CONDUIT OPENING. MORE WILL BE NEEDED FOR PANELS FARTHER AWAY.
 - ENSURE THE LCD MOUNTS ARE MOUNTED FLAT, LEVEL, AND PLUMB.
 - SPECIFICATIONS SUBJECT TO CHANGE WITHOUT NOTICE
- NOTES: UNLESS OTHERWISE SPECIFIED.

UNLESS OTHERWISE SPECIFIED: DIMENSIONS ARE IN MILLIMETERS (INCHES)		ENGR BY	DRAWN BY		29DEC15	PLANAR		PLANAR SYSTEMS, INC. 1195 NW COMPTON DRIVE BEAVERTON, OR 97006 USA	
TOLERANCES:		CHECKED BY	MAZ			TITLE		CLARITY MATRIX MX55HDX-L 3X2 MOUNT BRACKET LAYOUT	
X= ±1	XX= ±.25	USED ON				SIZE		DRAWING NO.	
.X= ±.5	∠= ±1°	MATERIAL				PART NO.		REV	
DIMENSIONING AND TOLERANCING PER ASME Y14.5M-1994		FINISH				D		HDX55L Outline	
THIRD ANGLE PROJECTION						SCALE		SHEET	
						1:5		3 OF 8	
						DO NOT SCALE			

THIS DRAWING CONTAINS INFORMATION PROPRIETARY TO PLANAR SYSTEMS, INC. ANY REPRODUCTION IN PART OR WHOLE WITHOUT THE WRITTEN PERMISSION OF PLANAR SYSTEMS IS PROHIBITED. THIS DRAWING IS SUPPLIED FOR INFORMATION, IDENTIFICATION, ENGINEERING, EVALUATION, AND/OR INSPECTION PURPOSES ONLY AND MAY NOT BE USED AS BASIS FOR THE MANUFACTURING OF PRODUCTS OR THE FURNISHING OF SERVICES TO PLANAR SYSTEMS OR TO ANY THIRD PARTY UNLESS AUTHORIZED IN WRITING BY PLANAR SYSTEMS.





WALL DIMENSIONS (mm/in)								
ROWS	COLUMNS	HEIGHT		WIDTH		DIAGONAL		
2	2	1368.0	53.86	2426.4	95.53	2785.5	109.66	
2	3	1368.0	53.86	3640.3	143.32	3888.9	153.10	
3	3	2052.7	80.81	3640.3	143.32	4179.2	164.53	
3	4	2052.7	80.81	4854.2	191.11	5270.4	207.50	
4	4	2737.4	107.77	4854.2	191.11	5572.8	219.40	
5	5	3422.1	134.73	6068.1	238.90	6966.5	274.27	

5. IT IS RECOMMENDED THAT FOR FLUSH MOUNT WALLS, A MINIMUM OF 13mm (0.5") GAP BE LEFT AT THE SIDES AND A MINIMUM OF 25mm (1.0") GAP BE LEFT AT THE BOTTOM. SEE PAGE ONE FOR TOP GAP RECOMMENDATIONS
3. IT IS RECOMMENDED THAT A MINIMUM OF 5 FEET OF CABLE IS AVAILABLE FOR PANELS NEXT TO THE CONDUIT OPENING. MORE WILL BE NEEDED FOR PANELS FARTHER AWAY.
2. ENSURE THE LCD MOUNTS ARE MOUNTED FLAT, LEVEL, AND PLUMB.
1. SPECIFICATIONS SUBJECT TO CHANGE WITHOUT NOTICE
- NOTES: UNLESS OTHERWISE SPECIFIED.

UNLESS OTHERWISE SPECIFIED
DIMENSIONS ARE IN MILLIMETERS (INCHES)

TOLERANCES:
X= ±1
XX= ±.25
X= ±.5
∠= ±1°
DIMENSIONING AND TOLERANCING PER
ASME Y14.5M-1994

THIRD ANGLE PROJECTION

ENG'D BY
DRAWN BY
CHECKED BY
USED ON
MATERIAL
FINISH

MAZ
29DEC15

TITLE
**CLARITY MATRIX MX55HDX-L
ERO MOUNT BRACKET LAYOUT**

SIZE
D
SCALE
1:5

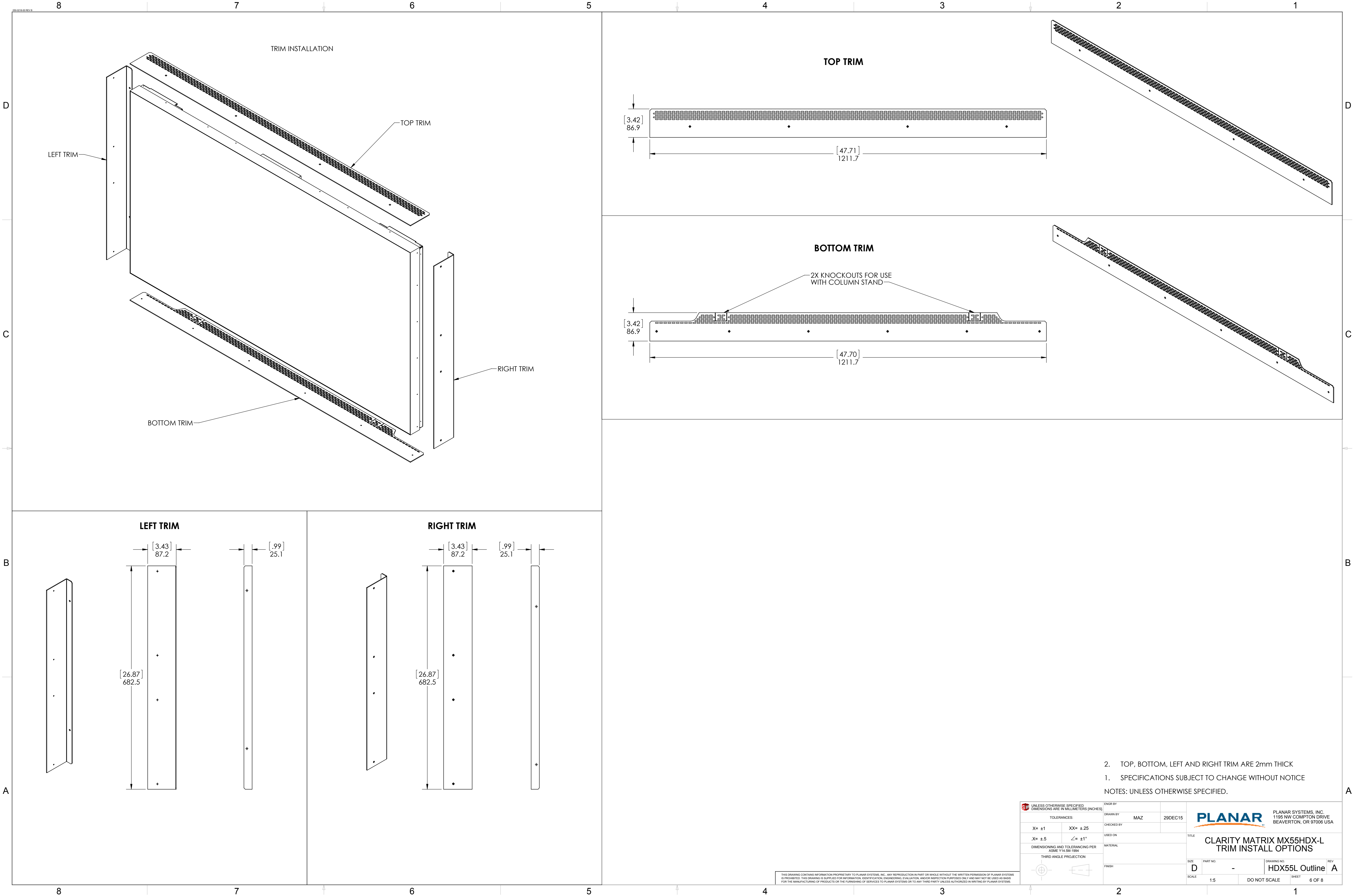
PART NO.
-
DO NOT SCALE

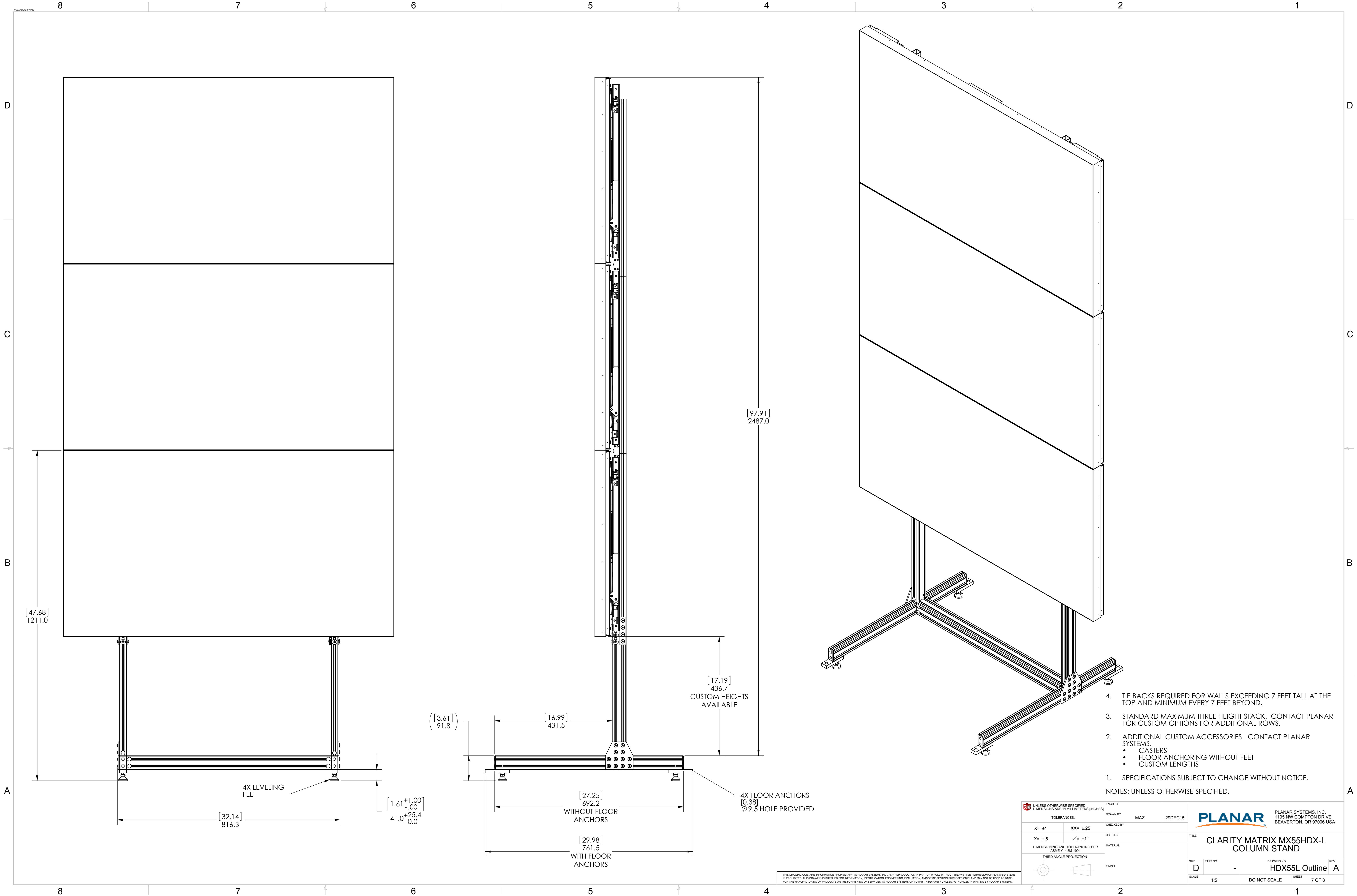
DRAWING NO.
HDX55L Outline
SHEET
5 OF 8


REV
A

PLANAR
PLANAR SYSTEMS, INC.
1195 NW COMPTON DRIVE
BEAVERTON, OR 97006 USA

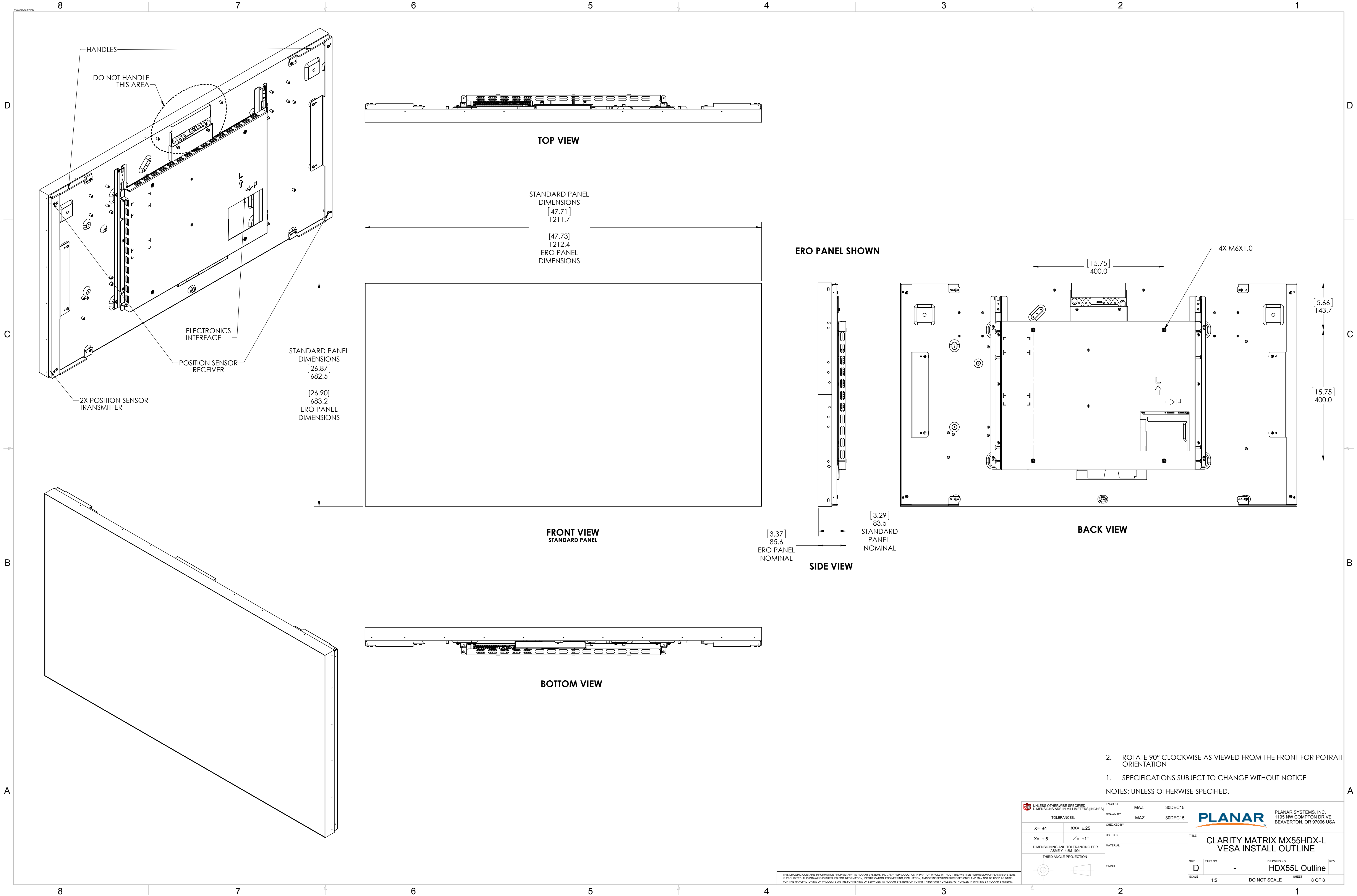
THIS DRAWING CONTAINS INFORMATION PROPRIETARY TO PLANAR SYSTEMS, INC. ANY REPRODUCTION IN PART OR WHOLE WITHOUT THE WRITTEN PERMISSION OF PLANAR SYSTEMS IS PROHIBITED. THIS DRAWING IS SUPPLIED FOR INFORMATION, IDENTIFICATION, ENGINEERING, EVALUATION, AND/OR INSPECTION PURPOSES ONLY AND MAY NOT BE USED AS BASIS FOR THE MANUFACTURING OF PRODUCTS OR THE FURNISHING OF SERVICES TO PLANAR SYSTEMS OR TO ANY THIRD PARTY UNLESS AUTHORIZED IN WRITING BY PLANAR SYSTEMS.





UNLESS OTHERWISE SPECIFIED DIMENSIONS ARE IN MILLIMETERS (INCHES)		ENGR BY	DRAWN BY		29DEC15	 PLANAR SYSTEMS, INC. 1195 NW COMPTON DRIVE BEAVERTON, OR 97006 USA	TITLE CLARITY MATRIX MX55HDX-L COLUMN STAND
TOLERANCES:		CHECKED BY	MAZ				
X= ±1	XX= ±.25	USED ON					
.X= ±.5	∠= ±1°	MATERIAL					
DIMENSIONING AND TOLERANCING PER ASME Y14.5M-1994		FINISH				SIZE D	PART NO. -
THIRD ANGLE PROJECTION						SCALE 1:5	DRAWING NO. HDX55L Outline
						DO NOT SCALE	REV A
						SHEET 7 OF 8	

THIS DRAWING CONTAINS INFORMATION PROPRIETARY TO PLANAR SYSTEMS, INC. ANY REPRODUCTION IN PART OR WHOLE WITHOUT THE WRITTEN PERMISSION OF PLANAR SYSTEMS IS PROHIBITED. THIS DRAWING IS SUPPLIED FOR INFORMATION, IDENTIFICATION, ENGINEERING, EVALUATION, AND/OR INSPECTION PURPOSES ONLY AND MAY NOT BE USED AS BASIS FOR THE MANUFACTURING OF PRODUCTS OR THE FURNISHING OF SERVICES TO PLANAR SYSTEMS OR TO ANY THIRD PARTY UNLESS AUTHORIZED IN WRITING BY PLANAR SYSTEMS.



2. ROTATE 90° CLOCKWISE AS VIEWED FROM THE FRONT FOR POTRAIT ORIENTATION
1. SPECIFICATIONS SUBJECT TO CHANGE WITHOUT NOTICE
- NOTES: UNLESS OTHERWISE SPECIFIED.

UNLESS OTHERWISE SPECIFIED: DIMENSIONS ARE IN MILLIMETERS (INCHES)		ENGR BY MAZ	30DEC15	PLANAR PLANAR SYSTEMS, INC. 1195 NW COMPTON DRIVE BEAVERTON, OR 97006 USA	
TOLERANCES:		DRAWN BY MAZ	30DEC15		
X= ±1	XX= ±.25	CHECKED BY		TITLE CLARITY MATRIX MX55HDX-L VESA INSTALL OUTLINE	
.X= ±.5	∠= ±1°	USED ON			
DIMENSIONING AND TOLERANCING PER ASME Y14.5M-1994		MATERIAL		SIZE D	PART NO. -
THIRD ANGLE PROJECTION		FINISH		SCALE 1:5	DRAWING NO. HDX55L Outline
				DO NOT SCALE	REV 8 OF 8

THIS DRAWING CONTAINS INFORMATION PROPRIETARY TO PLANAR SYSTEMS, INC. ANY REPRODUCTION IN PART OR WHOLE WITHOUT THE WRITTEN PERMISSION OF PLANAR SYSTEMS IS PROHIBITED. THIS DRAWING IS SUPPLIED FOR INFORMATION, IDENTIFICATION, ENGINEERING, EVALUATION, AND/OR INSPECTION PURPOSES ONLY AND MAY NOT BE USED AS BASIS FOR THE MANUFACTURING OF PRODUCTS OR THE FURNISHING OF SERVICES TO PLANAR SYSTEMS OR TO ANY THIRD PARTY UNLESS AUTHORIZED IN WRITING BY PLANAR SYSTEMS.