

Bringing on-trend consumer electronics styling to the digital signage marketplace

The Planar® UltraLux™ Series is a family of large format 70" and 80" LCD displays featuring a zero bezel, infinity edge-to-edge glass design configured for multiple solutions within digital signage applications.

The Planar UltraLux Series, with best-in-class 24/7 performance, incorporates the design style and aesthetics of today's consumer electronics, bringing on-trend consumer electronics styling to the commercial digital signage display market and creating digital signage solutions that consumers cannot ignore in retail, airports and other promotional or way-finding environments.

MULTIPLE CONFIGURATIONS



Wall mount portrait



Wall mount landscape



Free-standing single and double-sided models

KEY FEATURES

Panel size options:
70" and 80"

Available with 6-point
multi-touch technology

Best-in-class 24/7
performance

Planar UltraLux Series is a family of LCD displays designed and engineered with a range of sizes, mounting options and value-added features. Planar UltraLux Series is available in 70" and 80" sizes and is wall mountable in portrait or landscape configurations. Planar UltraLux Series displays are also available in free-standing, single or double-sided models.

Each model within the Planar UltraLux Series is available with six-point multi-touch technology for interactive digital signage applications.

With a range of display sizes, configurations and wall-mount or free-standing display options, the Planar UltraLux Series provides the most complete family of large format LCD digital signage displays.

Planar UltraLux Series, with best-in-class 24/7 performance, is the perfect solution for retail brand communications, ad-networks, corporate/hospitality communications, and way-finding applications.



MODERN INDUSTRIAL DESIGN

The Planar UltraLux Series was designed and engineered with a zero bezel, infinity edge-to-edge glass design that is similar to today's most popular smart phones and tablets.

Planar's ERO™ (Extended Ruggedness and Optics) protective glass is standard on all Planar UltraLux Series models and features white or black glass borders, and silver or black metal edge trim options.

KEY FEATURES

Zero bezel infinity-edge
glass design

Available in white glass
border with silver metal
trim or black glass border
with black metal trim

Ultra-thin profile- less than
3" deep when mounted

ADVANCED ENGINEERING

The Planar UltraLux Series delivers superior 24/7 visual performance with a lower total cost of ownership (TCO) compared to other large format digital signage displays.

UltraLux Mounting System

The UltraLux Mounting System™ allows for simplified installation with no additional hardware required and is included with all Planar UltraLux Series orders (portrait or landscape).

The UltraLux Mounting System also incorporates a kick-stand that tilts the display away from the wall for easy access to electronics. Eliminating the need to completely remove the display from the wall reduces complexity and service time by up to 70%.

Redundant Power Supply

A redundant power supply design ensures continuous operation. If one power supply fails, the remaining power supply will continue to power the display helping to ensure uninterrupted operation.

Integrated Media Player Storage

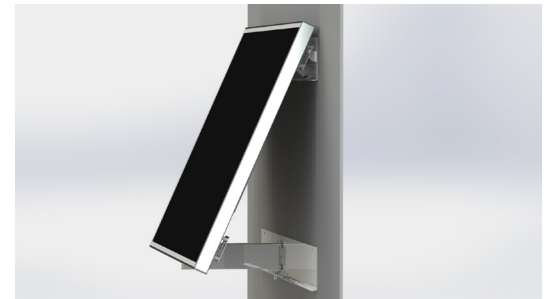
Planar UltraLux Series displays incorporate a media player compartment enabling a fully integrated, plug-and-play digital signage display system. The Planar® ContentSmart™ Media Player is available, and its easy-to-use software application allows you to create digital signage content using existing assets (video, images, PowerPoint, music).

LED Technology

With 700-nits, FHD 1080p edge-lit LED technology, the Planar UltraLux Series delivers reduced power consumption and lowered operating costs over the life of the display by up to 60% compared to CCFL technology.

RS232 and LAN with SNMP control

Control and status monitoring and integration with enterprise management solutions.



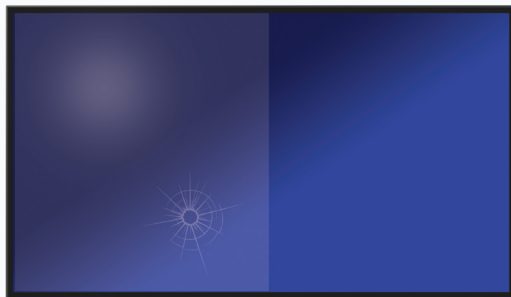
UltraLux Mounting System with kick-stand service mode



Wall mount brackets



Integrated media player compartment
Cable box
Control board/
redundant power supply
Kick stand stop
bracket
Mounting
bracket



Without ERO

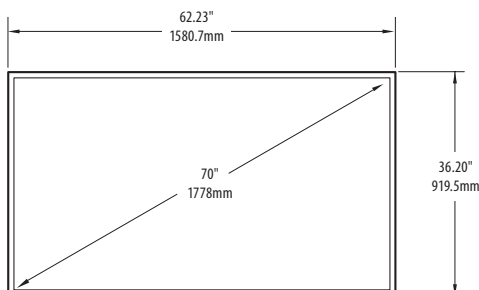
With ERO

ERO technology provides a glass front for increased ruggedness and optical performance

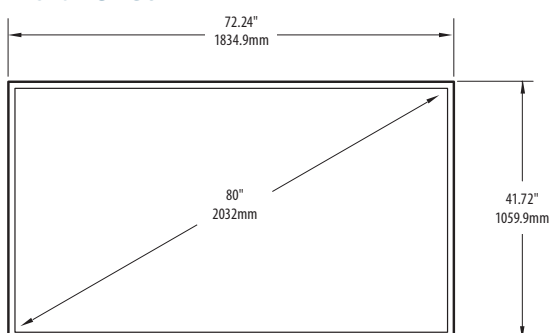
THE ERO ADVANTAGE

The Planar UltraLux Series comes standard with Planar's ERO™ (Extended Ruggedness and Optics) technology, providing a glass surface that protects the LCD from damage caused by passersby in retail stores, airport concourses and other high traffic public environments. Planar UltraLux Series with ERO also improves perceived contrast by more than 300 percent, giving viewers the highest quality visual experience, making it more readable and impactful even in bright public venues.

Front LUX70



Front LUX80



PLANAR ULTRALUX SERIES SPECIFICATIONS (PRELIMINARY)

Model	LUX70	LUX80
Screen Active Area Size	70 inch	80 inch
Display Active Area	60.6" x 34.1" (153.9cm x 86.6cm)	69.7" x 39.2" (177cm x 99.6cm)
Line Current, max (at 90 VAC)	4A	4.7A
Power Consumption (typical)	300W	350W
Dimensions (including wall mount)	62.2" x 36.2" x 3.0" (158.1cm x 92cm x 7cm)	72.2" x 41.7" x 2.9" (183.4cm x 105.9cm x 7cm)
Weight	172 lbs / 64 kg	221 lbs / 83 kg
Orientation	Portrait/Landscape	
Recommended Usage	24/7	
Aspect Ratio	16:9	
Brightness (max)	700 nits	
Backlight	LED	
Contrast Ratio (typical)	5000:1	
Response Time (typical)	4 msec	
Internal Frame Rate	120 Hz	
Viewing Angle	176° H,V	
Native Resolution	FHD 1920 x 1080	
Display Colors	8 bits per color- 16.7M	
Surface Treatment	Anti-Reflective 3 mm; Optically Bonded Annealed Vandal Glass	
Control and Monitoring	RS232/LAN with SNMP	
Line Voltage	Universal 120/240 VAC	
External Connections	HDMI - Type A Receptacle; Display Port -Receptacle; VGA - DB15; Ethernet - RJ45; RS232 - DB9; AC Power - IEC C14	
Operating Temperature	32°F to + 104°F (0°C to + 40°C)	
Storage Temperature	-4°F to + 140°F (-20°C to + 60°C)	
Humidity	20 to 90% RH	
Approvals	FCC, CE	
Options	Landscape Wall Mount, Portrait Wall Mount, White or Black edge trim, Single Sided Pedestal, Double Sided Pedestal, 6-point multi-touch	
Warranty	3 Year Advance Exchange	
Other Features	Wall mount included	



When image experience matters.

www.planar.com
sales@planar.com
1-866-475-2627

Planar is a trademark of Planar Systems, Inc. All other trade and service marks are the property of their holders.

Copyright© 2012 Planar Systems, Inc. All rights reserved. This document may not be copied in any form without written permission from Planar Systems, Inc. Information in this document is subject to change without notice. 9/12