

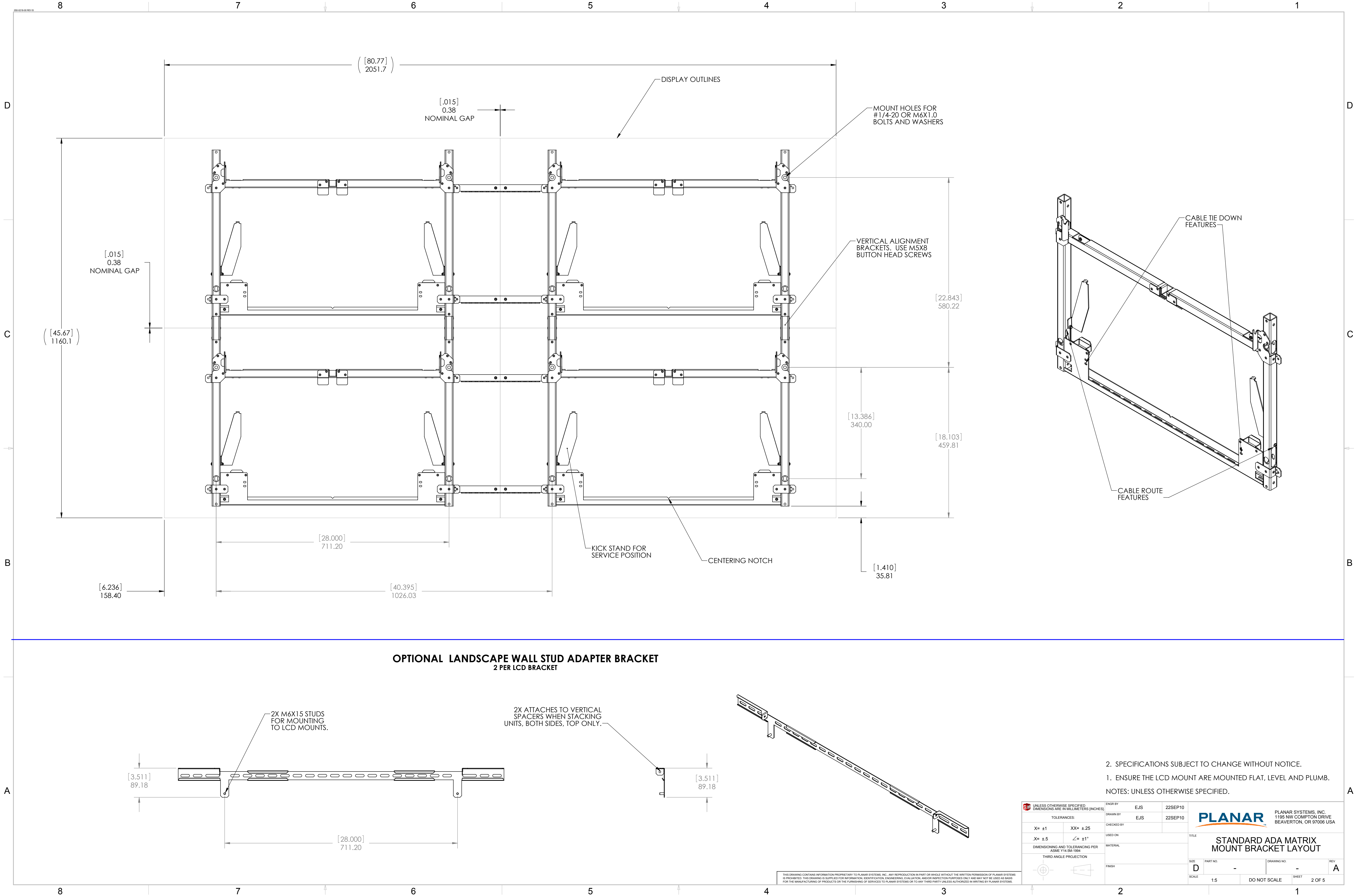
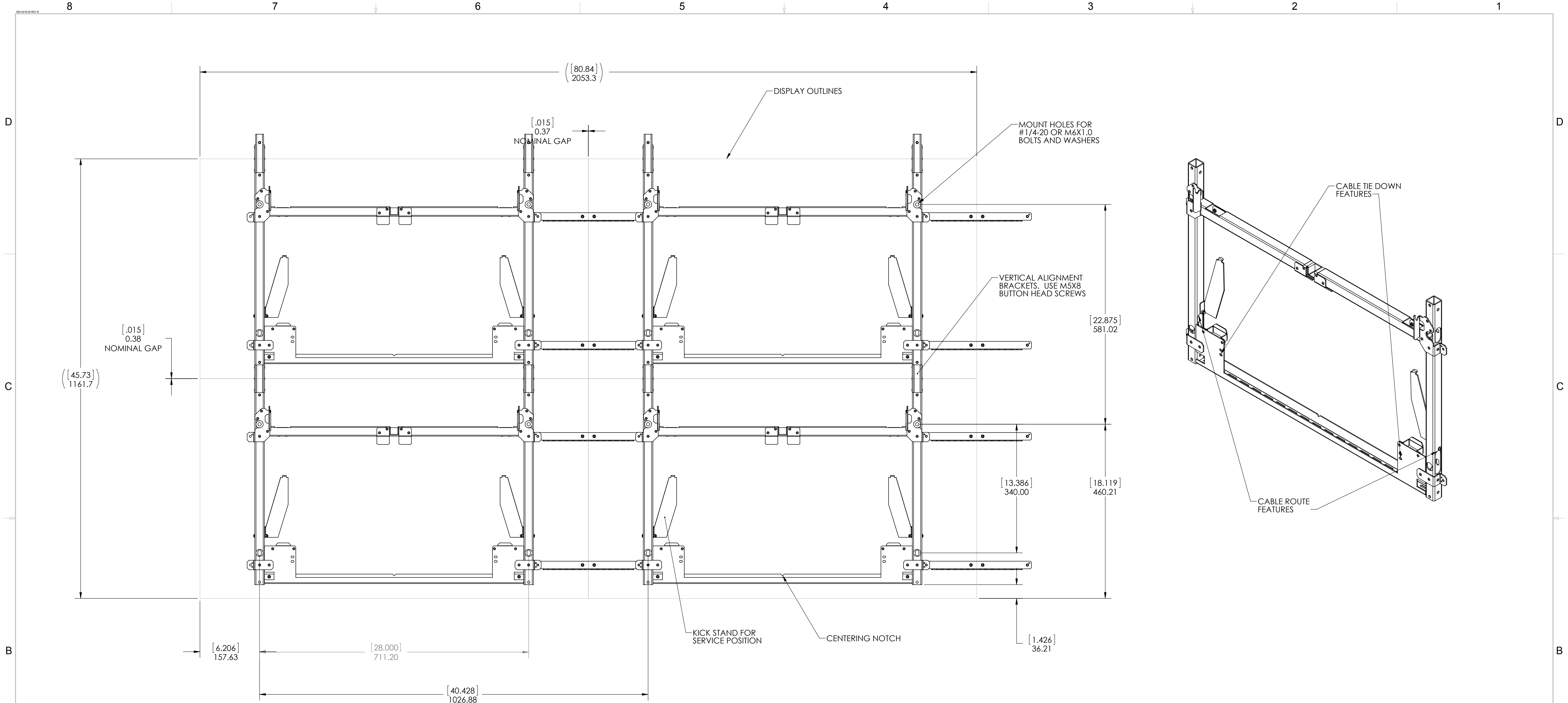


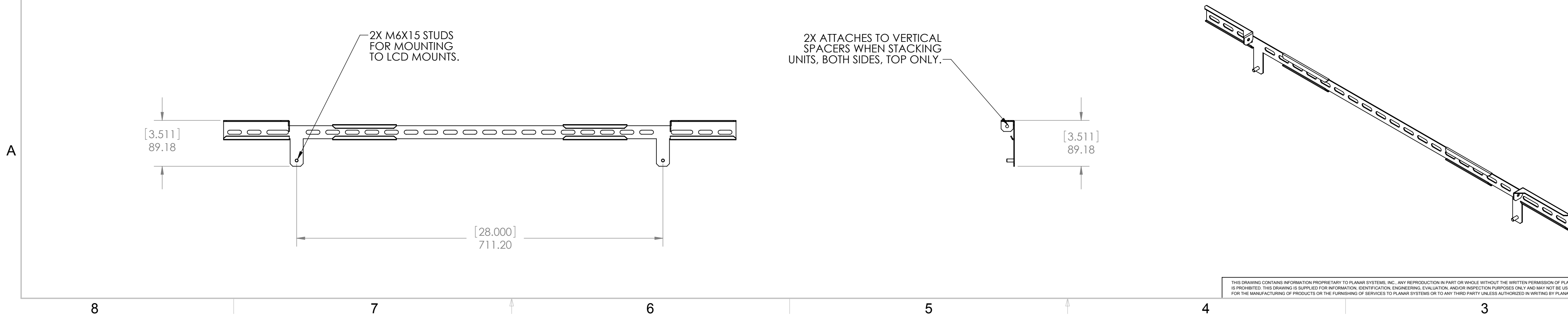
REVISION HISTORY				
ECO	ZONE	REV.	DESCRIPTION	DATE
				APPR'D

UNLESS OTHERWISE SPECIFIED DIMENSIONS ARE IN MILLIMETERS (INCHES)		ENGR BY EJS	19NOV10	 PLANAR SYSTEMS, INC. 1195 NW COMPTON DRIVE BEAVERTON, OR 97006 USA	
TOLERANCES:		DRAWN BY EJS	19NOV10		
X= ±1	XX= ±.25	CHECKED BY			
.X= ±.5	∠= ±1°	USED ON	MATRIX		
DIMENSIONING AND TOLERANCING PER ASME Y14.5M-1994		MATERIAL		TITLE ADA MATRIX PRODUCT OUTLINE	
THIRD ANGLE PROJECTION		FINISH			
		SIZE D	PART NO. -	DRAWING NO. -	REV A
		SCALE 1:5	DO NOT SCALE		SHEET 1 OF 5





**OPTIONAL LANDSCAPE WALL STUD ADAPTER BRACKET**  
2 PER LCD BRACKET



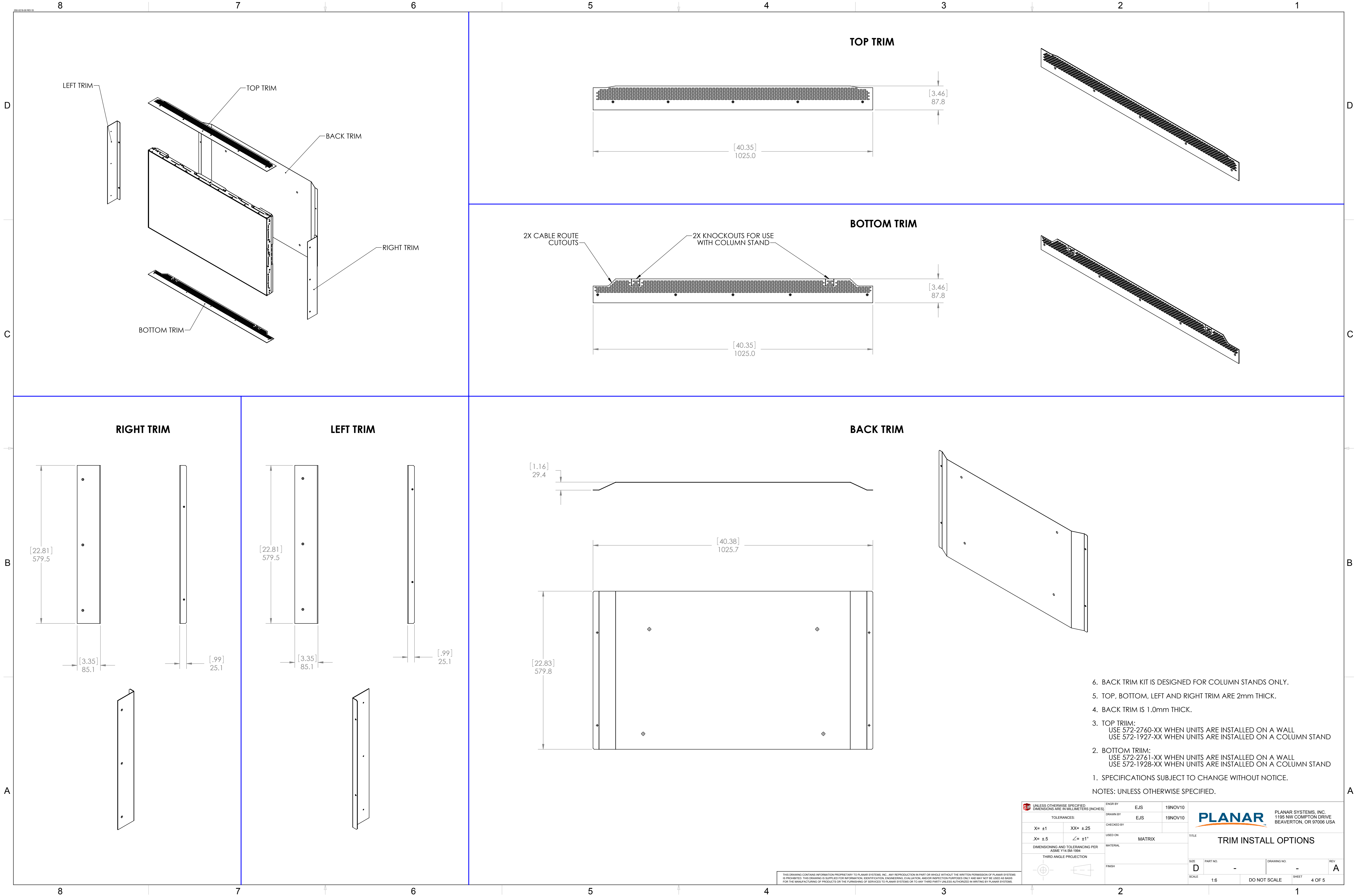
2. SPECIFICATIONS SUBJECT TO CHANGE WITHOUT NOTICE.  
1. ENSURE THE LCD MOUNT ARE MOUNTED FLAT, LEVEL AND PLUMB.

NOTES: UNLESS OTHERWISE SPECIFIED.


UNLESS OTHERWISE SPECIFIED, DIMENSIONS ARE IN MILLIMETERS (INCHES)		ENGR BY EJS	22SEP10	<b>PLANAR</b> PLANAR SYSTEMS, INC. 1195 NW COMPTON DRIVE BEAVERTON, OR 97006 USA
TOLERANCES:		DRAWN BY EJS	22SEP10	
X= ±1	XX= ±.25	CHECKED BY		
.X= ±.5	∠= ±1°	USED ON		
DIMENSIONING AND TOLERANCING PER ASME Y14.5M-1994		MATERIAL		
THIRD ANGLE PROJECTION		FINISH		
THIS DRAWING CONTAINS INFORMATION PROPRIETARY TO PLANAR SYSTEMS, INC. ANY REPRODUCTION IN PART OR WHOLE WITHOUT THE WRITTEN PERMISSION OF PLANAR SYSTEMS IS PROHIBITED. THIS DRAWING IS SUPPLIED FOR INFORMATION, IDENTIFICATION, ENGINEERING, EVALUATION, AND/OR INSPECTION PURPOSES ONLY AND MAY NOT BE USED AS BASIS FOR THE MANUFACTURING OF PRODUCTS OR THE FURNISHING OF SERVICES TO PLANAR SYSTEMS OR TO ANY THIRD PARTY UNLESS AUTHORIZED IN WRITING BY PLANAR SYSTEMS.				

SIZE <b>D</b>	PART NO. -	DRAWING NO. -	REV <b>A</b>
SCALE 1:5	DO NOT SCALE		SHEET 3 OF 5





6. BACK TRIM KIT IS DESIGNED FOR COLUMN STANDS ONLY.
5. TOP, BOTTOM, LEFT AND RIGHT TRIM ARE 2mm THICK.
4. BACK TRIM IS 1.0mm THICK.
3. TOP TRIM:  
USE 572-2760-XX WHEN UNITS ARE INSTALLED ON A WALL  
USE 572-1927-XX WHEN UNITS ARE INSTALLED ON A COLUMN STAND
2. BOTTOM TRIM:  
USE 572-2761-XX WHEN UNITS ARE INSTALLED ON A WALL  
USE 572-1928-XX WHEN UNITS ARE INSTALLED ON A COLUMN STAND
1. SPECIFICATIONS SUBJECT TO CHANGE WITHOUT NOTICE.
- NOTES: UNLESS OTHERWISE SPECIFIED.

		PLANAR SYSTEMS, INC. 1195 NW COMPTON DRIVE BEAVERTON, OR 97006 USA	
TITLE		TRIM INSTALL OPTIONS	
SIZE	PART NO.	DRAWING NO.	REV
D	-	-	A
SCALE	1:6	DO NOT SCALE	SHEET 4 OF 5

THIS DRAWING CONTAINS INFORMATION PROPRIETARY TO PLANAR SYSTEMS, INC. ANY REPRODUCTION IN PART OR WHOLE WITHOUT THE WRITTEN PERMISSION OF PLANAR SYSTEMS IS PROHIBITED. THIS DRAWING IS SUPPLIED FOR INFORMATION, IDENTIFICATION, ENGINEERING, EVALUATION, AND/OR INSPECTION PURPOSES ONLY AND MAY NOT BE USED AS BASIS FOR THE MANUFACTURING OF PRODUCTS OR THE FURNISHING OF SERVICES TO PLANAR SYSTEMS OR TO ANY THIRD PARTY UNLESS AUTHORIZED IN WRITING BY PLANAR SYSTEMS.

