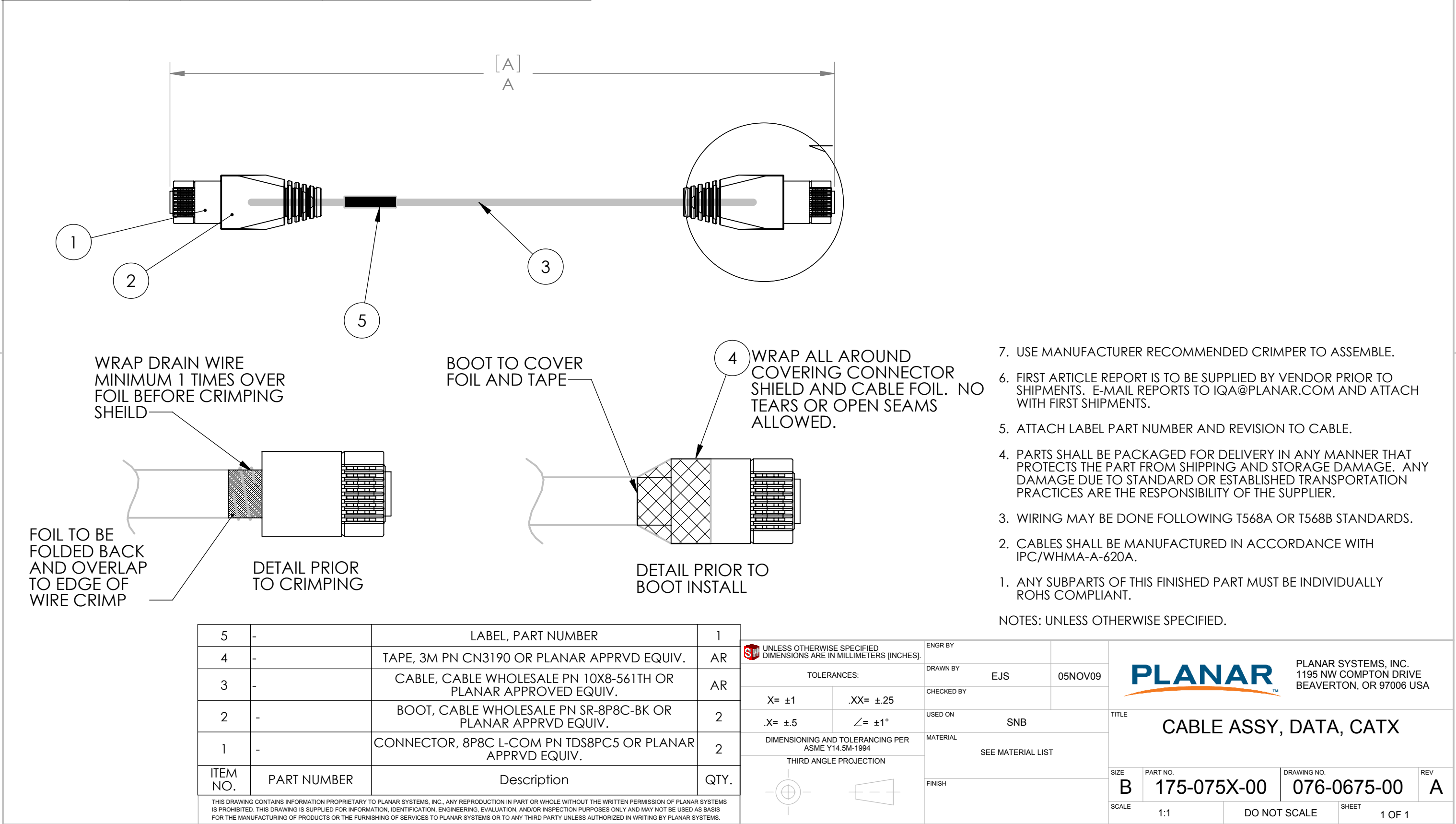


PART NUMBER TABLE			
PART NUMBER	REV	LENGTH (A)	DESCRIPTION
175-0751-00	A	6100mm/240"	CABLE ASSY, DATA, CATX, 20FT
175-0752-00	A	9150mm/360"	CABLE ASSY, DATA, CATX, 30FT
175-0753-00	A	15240mm/600"	CABLE ASSY, DATA, CATX, 50FT
175-0754-00	A	30480mm/1200"	CABLE ASSY, DATA, CATX, 100FT

REVISION HISTORY					
ZONE	REV.	DESCRIPTION	DATE	APPR'D	ECO
	A	PRODUCTION RELEASE	11/5/2009	EJS	




- 7. USE MANUFACTURER RECOMMENDED CRIMPER TO ASSEMBLE.
- 6. FIRST ARTICLE REPORT IS TO BE SUPPLIED BY VENDOR PRIOR TO SHIPMENTS. E-MAIL REPORTS TO IQA@PLANAR.COM AND ATTACH WITH FIRST SHIPMENTS.
- 5. ATTACH LABEL PART NUMBER AND REVISION TO CABLE.
- 4. PARTS SHALL BE PACKAGED FOR DELIVERY IN ANY MANNER THAT PROTECTS THE PART FROM SHIPPING AND STORAGE DAMAGE. ANY DAMAGE DUE TO STANDARD OR ESTABLISHED TRANSPORTATION PRACTICES ARE THE RESPONSIBILITY OF THE SUPPLIER.
- 3. WIRING MAY BE DONE FOLLOWING T568A OR T568B STANDARDS.
- 2. CABLES SHALL BE MANUFACTURED IN ACCORDANCE WITH IPC/WHMA-A-620A.
- 1. ANY SUBPARTS OF THIS FINISHED PART MUST BE INDIVIDUALLY ROHS COMPLIANT.

NOTES: UNLESS OTHERWISE SPECIFIED.

5	-	LABEL, PART NUMBER	1
4	-	TAPE, 3M PN CN3190 OR PLANAR APPRVD EQUIV.	AR
3	-	CABLE, CABLE WHOLESALE PN 10X8-561TH OR PLANAR APPROVED EQUIV.	AR
2	-	BOOT, CABLE WHOLESALE PN SR-8P8C-BK OR PLANAR APPRVD EQUIV.	2
1	-	CONNECTOR, 8P8C L-COM PN TDS8PC5 OR PLANAR APPRVD EQUIV.	2
ITEM NO.	PART NUMBER	Description	QTY.

THIS DRAWING CONTAINS INFORMATION PROPRIETARY TO PLANAR SYSTEMS, INC. ANY REPRODUCTION IN PART OR WHOLE WITHOUT THE WRITTEN PERMISSION OF PLANAR SYSTEMS IS PROHIBITED. THIS DRAWING IS SUPPLIED FOR INFORMATION, IDENTIFICATION, ENGINEERING, EVALUATION, AND/OR INSPECTION PURPOSES ONLY AND MAY NOT BE USED AS BASIS FOR THE MANUFACTURING OF PRODUCTS OR THE FURNISHING OF SERVICES TO PLANAR SYSTEMS OR TO ANY THIRD PARTY UNLESS AUTHORIZED IN WRITING BY PLANAR SYSTEMS.

UNLESS OTHERWISE SPECIFIED DIMENSIONS ARE IN MILLIMETERS [INCHES].		ENGR BY	
		DRAWN BY	EJS
TOLERANCES:		CHECKED BY	05NOV09
X= ±1	.XX= ±.25	USED ON	SNB
.X= ±.5	∠= ±1°	MATERIAL	SEE MATERIAL LIST
DIMENSIONING AND TOLERANCING PER ASME Y14.5M-1994		FINISH	
THIRD ANGLE PROJECTION			



PLANAR SYSTEMS, INC.
1195 NW COMPTON DRIVE
BEAVERTON, OR 97006 USA

TITLE CABLE ASSY, DATA, CATX			
SIZE B	PART NO. 175-075X-00	DRAWING NO. 076-0675-00	REV A
SCALE 1:1	DO NOT SCALE		SHEET 1 OF 1